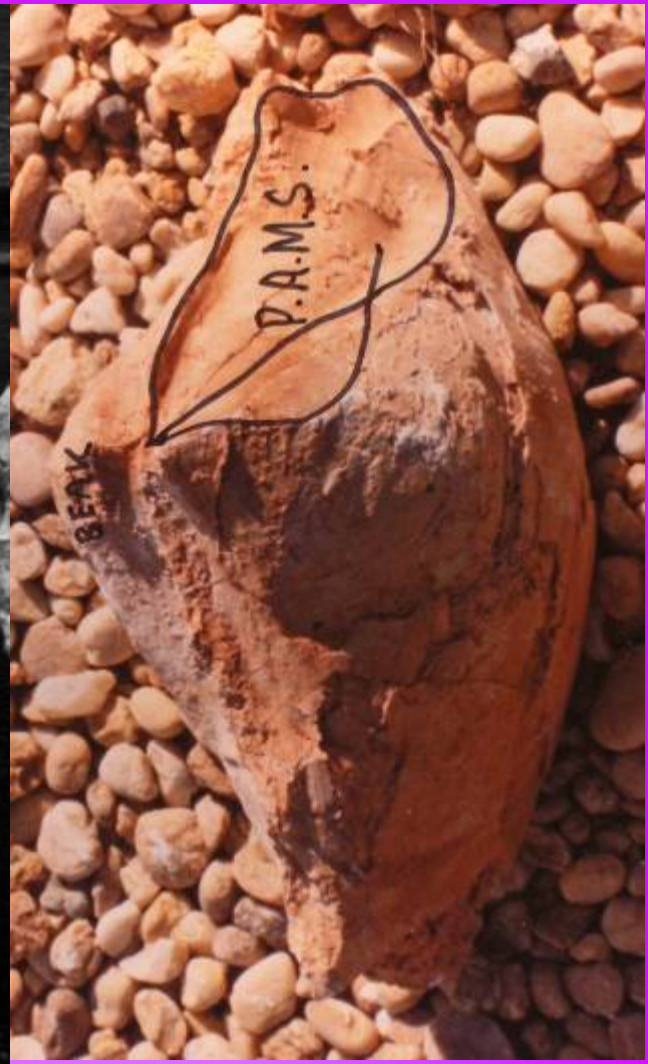
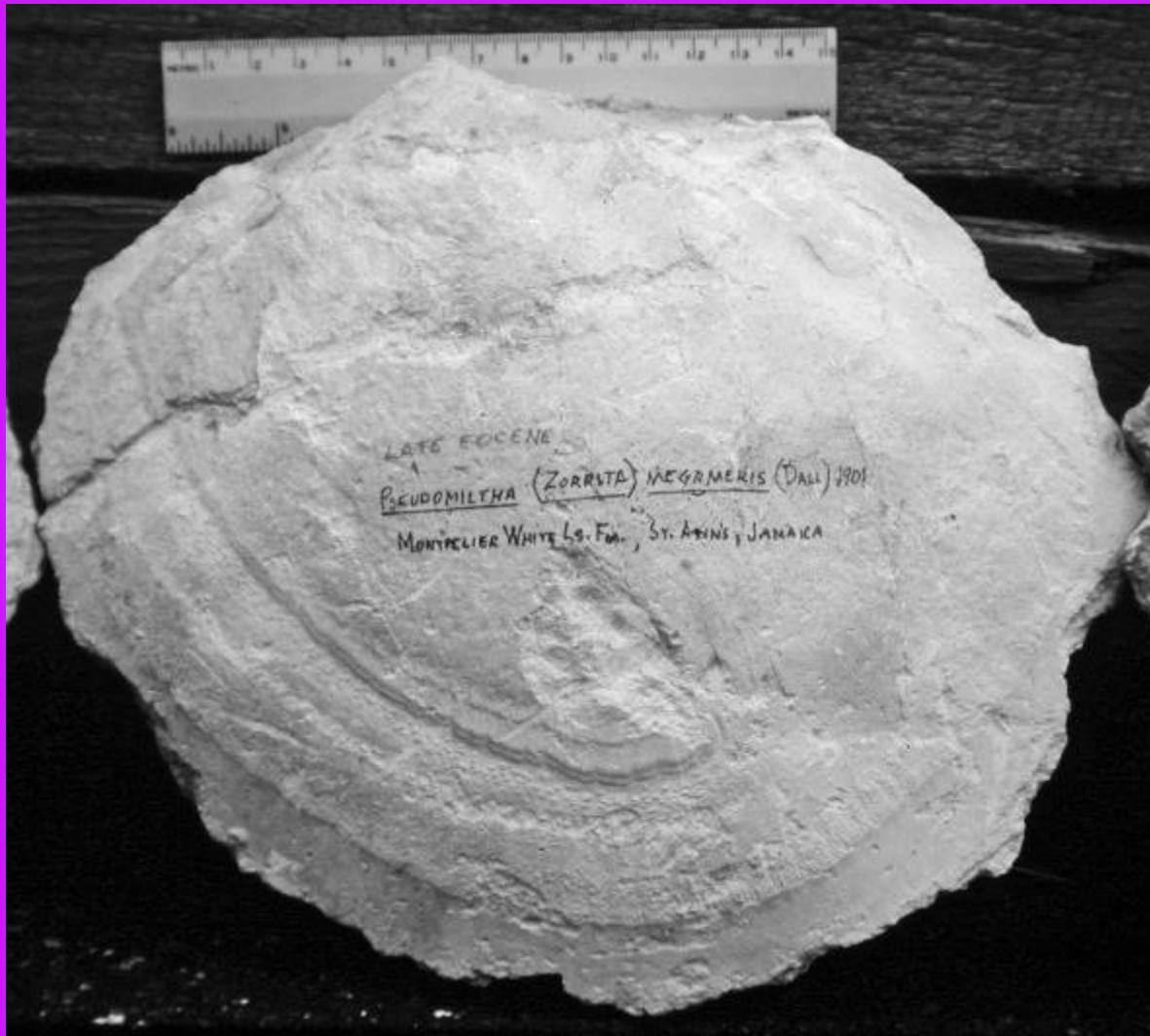


**MICROFOSSILS OF
THE JAMAICAN
WHITE
LIMESTONE GP.—
CLAREMONT FM.
LATE EOCENE**

Mi rogeo



mikrogeo.com



**Index Fossil: Lucinid Clam- *Pseudomiltha*
(*Zorrita*) *megameris* (Dall, 1901)**

PSEUDOMILTHA (ZORRITA) MEGAMERIS (DALL) 1901

LATE EOCENE

NEAR OCHO RIOS

JAMAICA

EXTERNAL
ORNAMENTATION



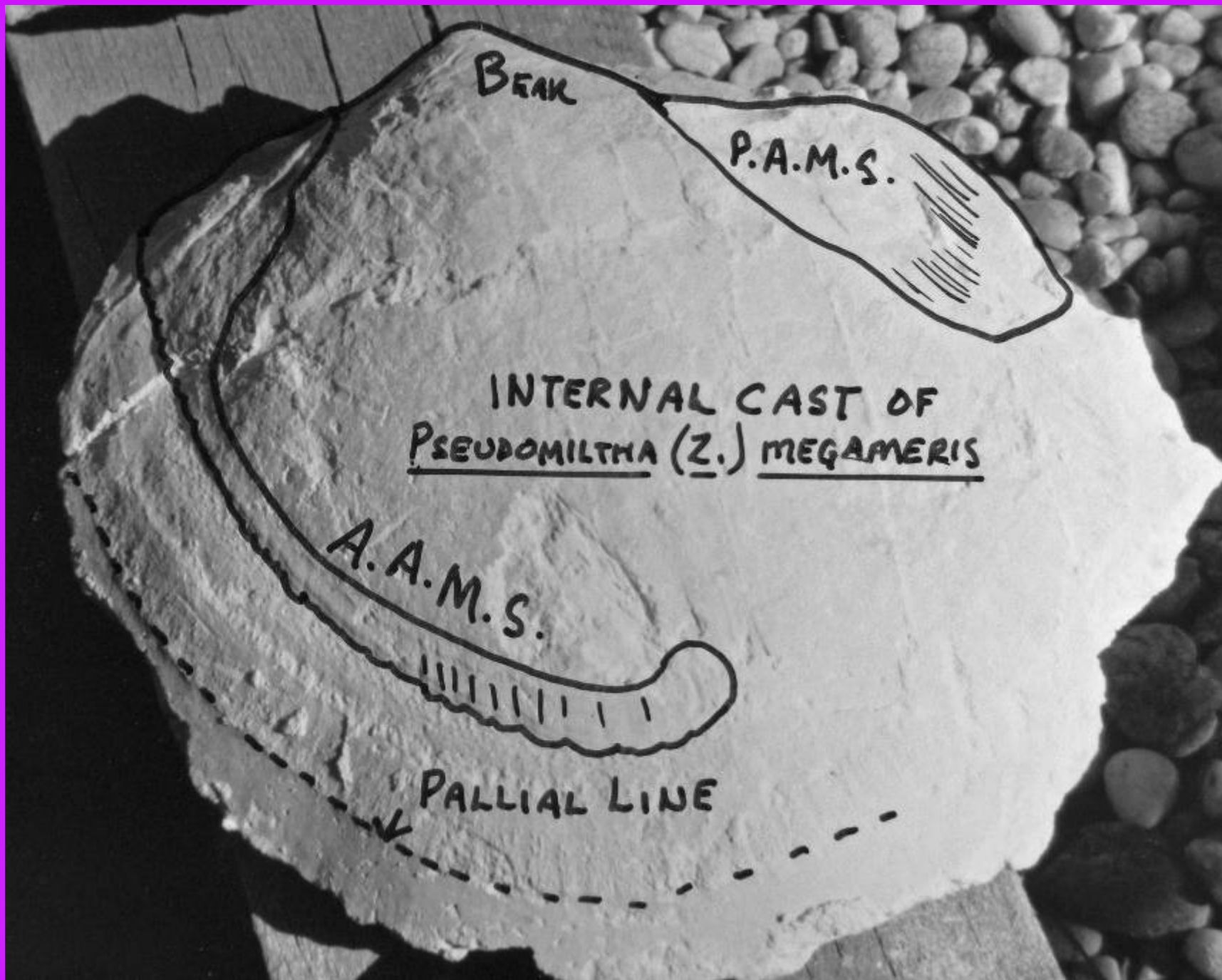
BEAK

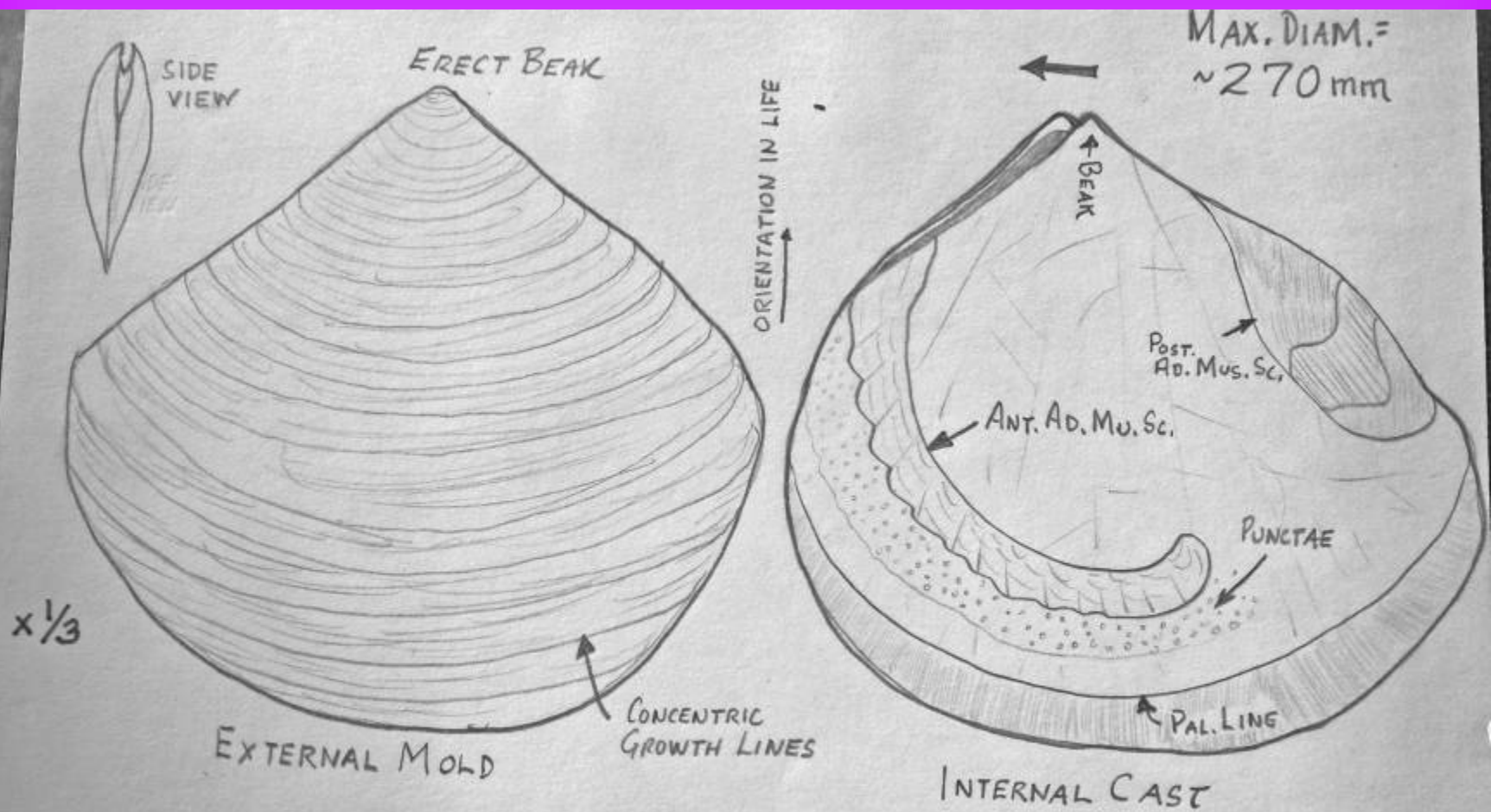
P.A.M.S.

INTERNAL CAST OF
PSEUDOMILTHA (Z.) MEGAMERIS

A.A.M.S.

PALLIAL LINE



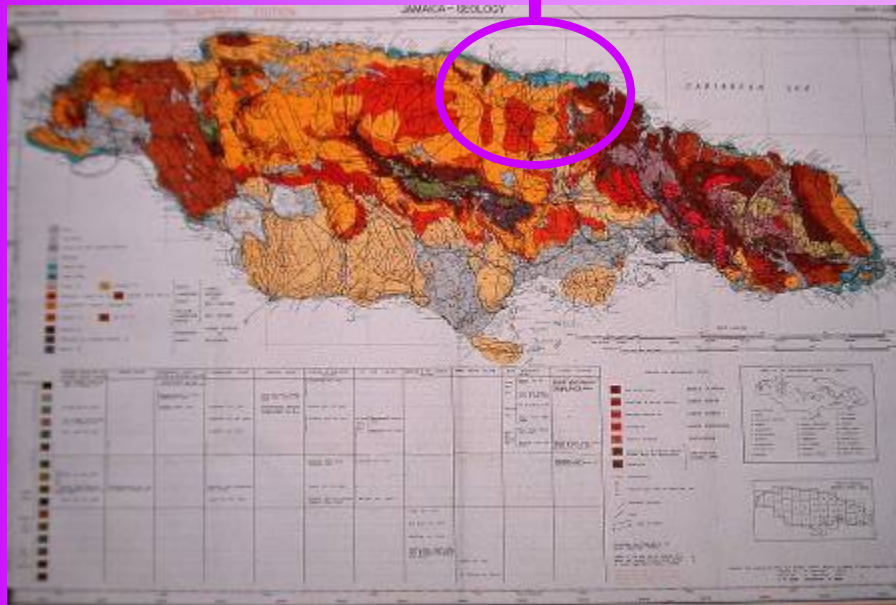
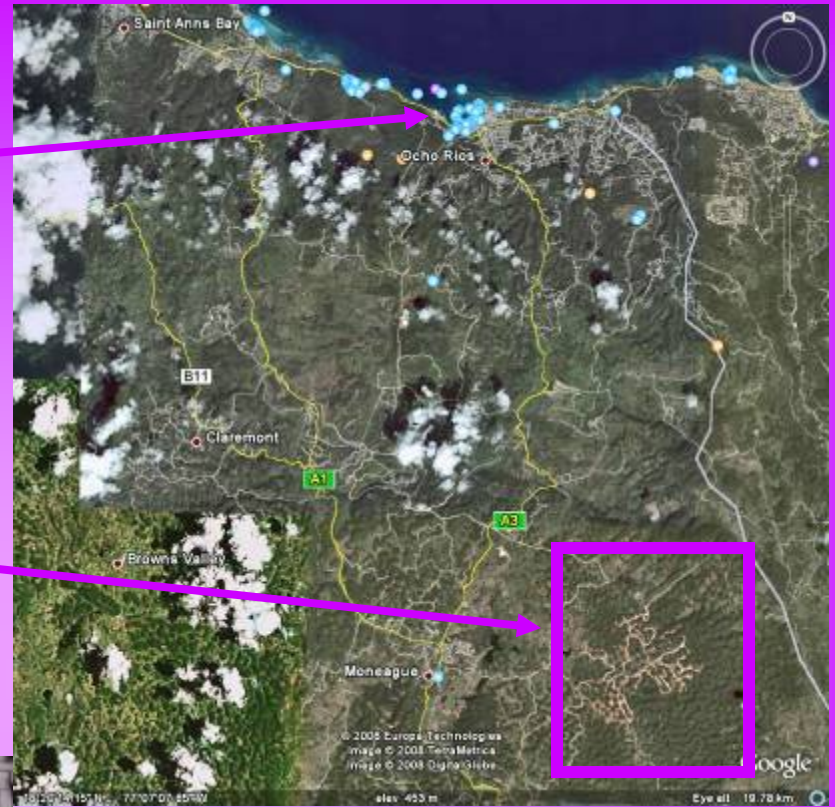
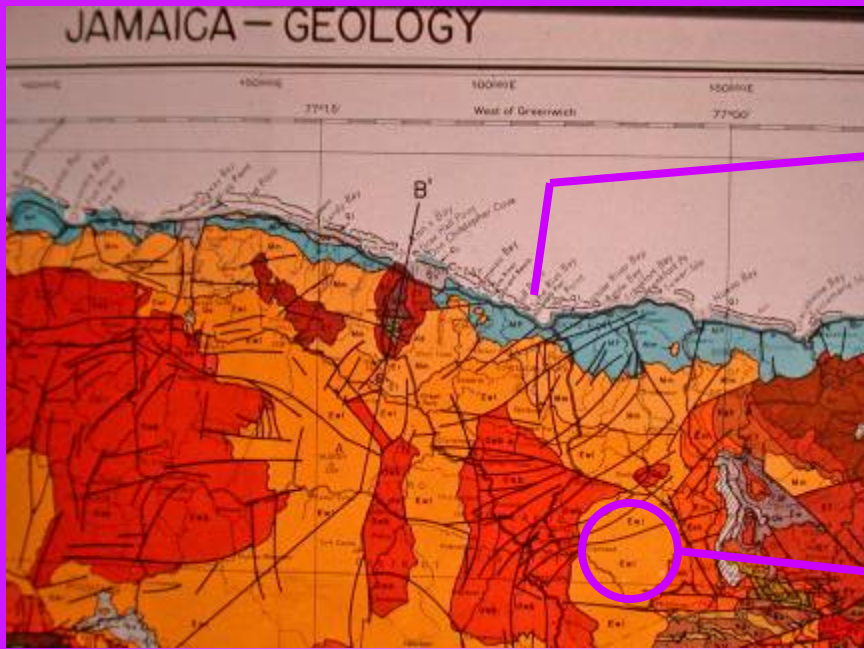


PSEUDOMILTHA (ZORRITA) MEGAMERIS (DALL), 1901; A LARGE LUCINID FROM LATE EOCENE, JAMAICA, WI

Ontogeny of *Pseudomiltha* (*Zorrita*) *megameris*



6" Ruler

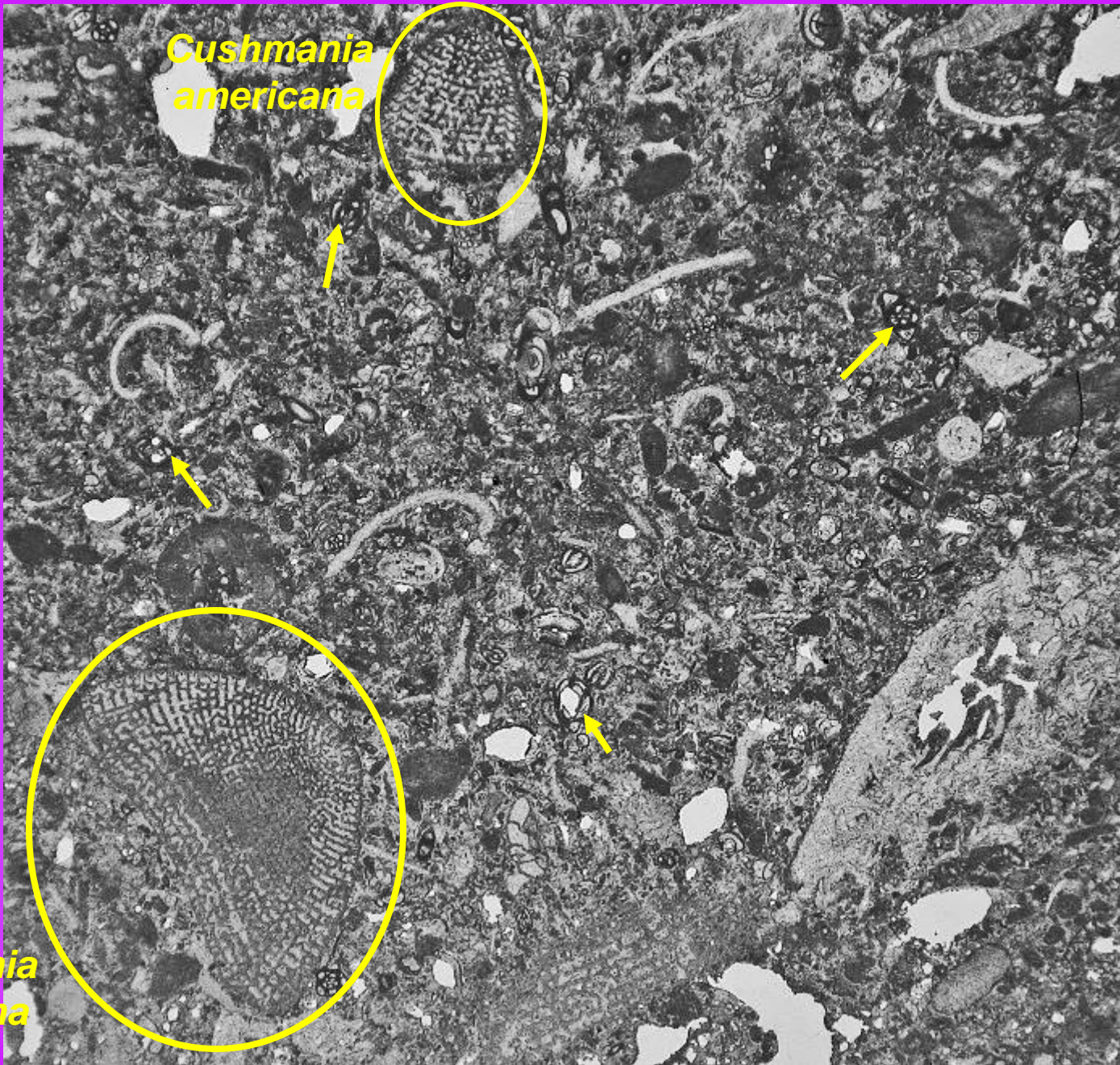


**Alcoa/Reynolds
bauxite mines
south of Ocho Rios**



**Outcrop of
Limestone in
Quarry- White
Limestone Gp.-
Claremont Fm.-
Late Eocene**

Thin section micrographs



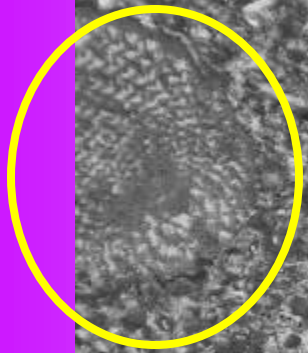
Cushmania americana

→
Miliolids

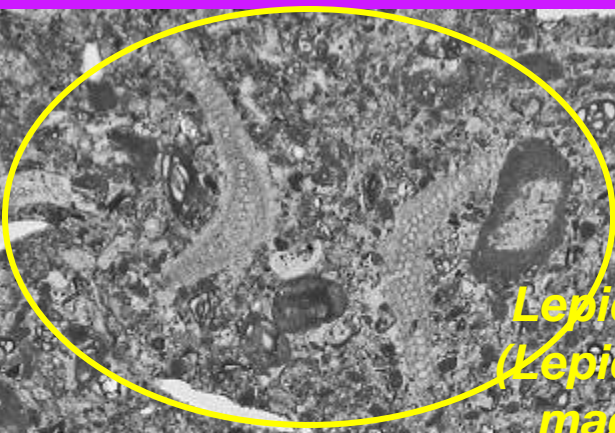
Cushmania americana



*Cushmania
americana*



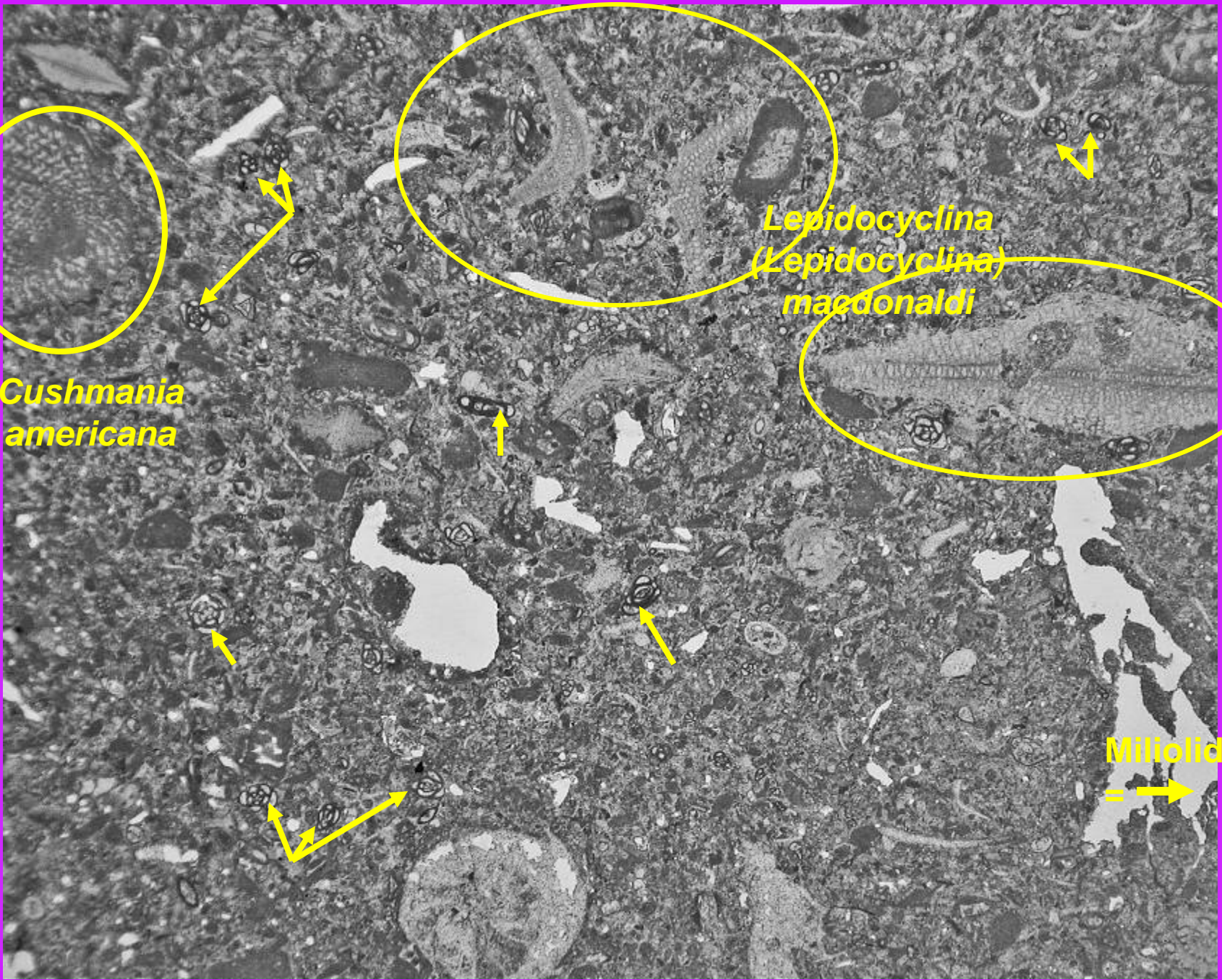
Cushmania americana

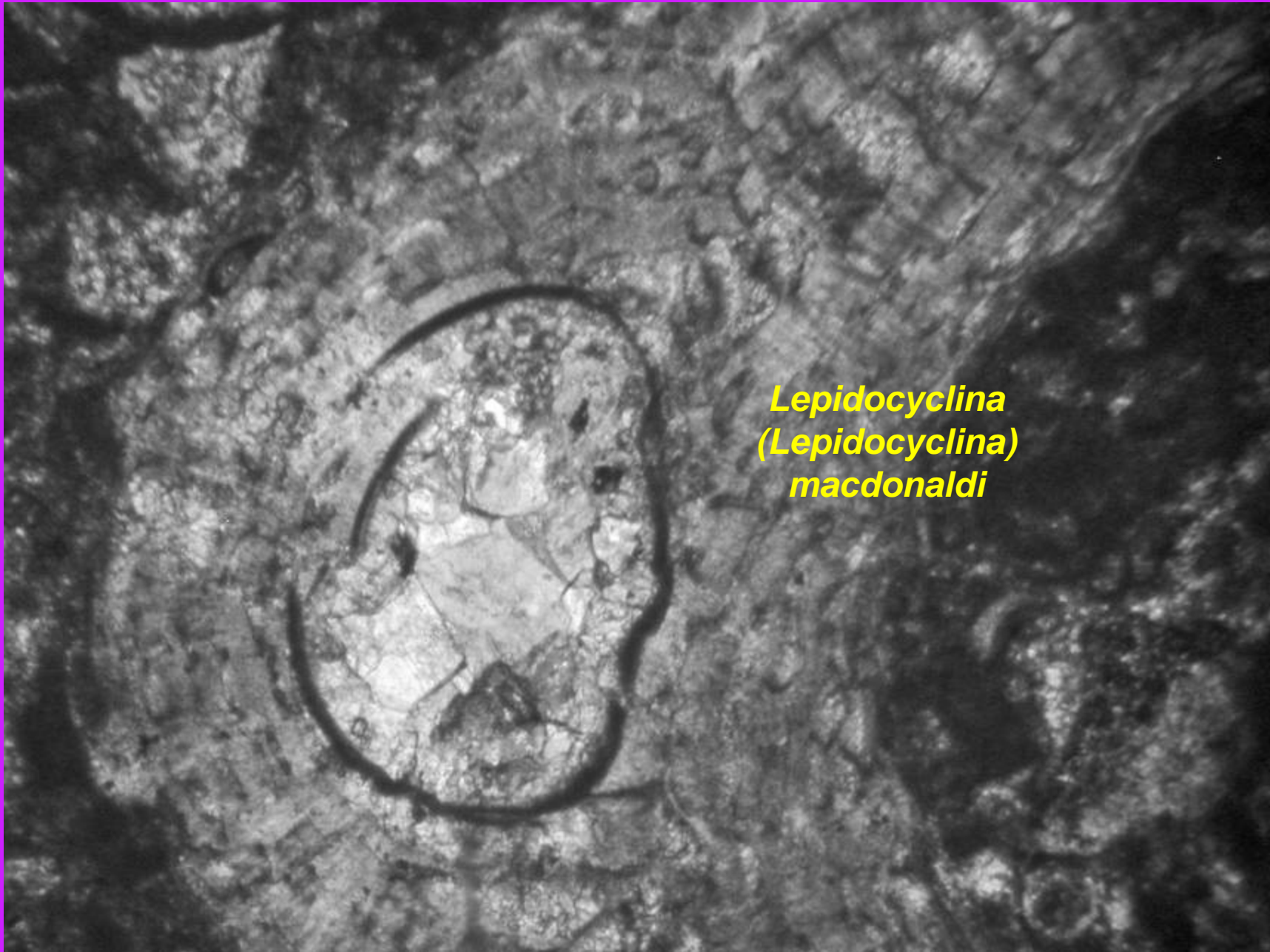


Lepidocyclina
(*Lepidocyclina*)
macdonaldi



Miliolids

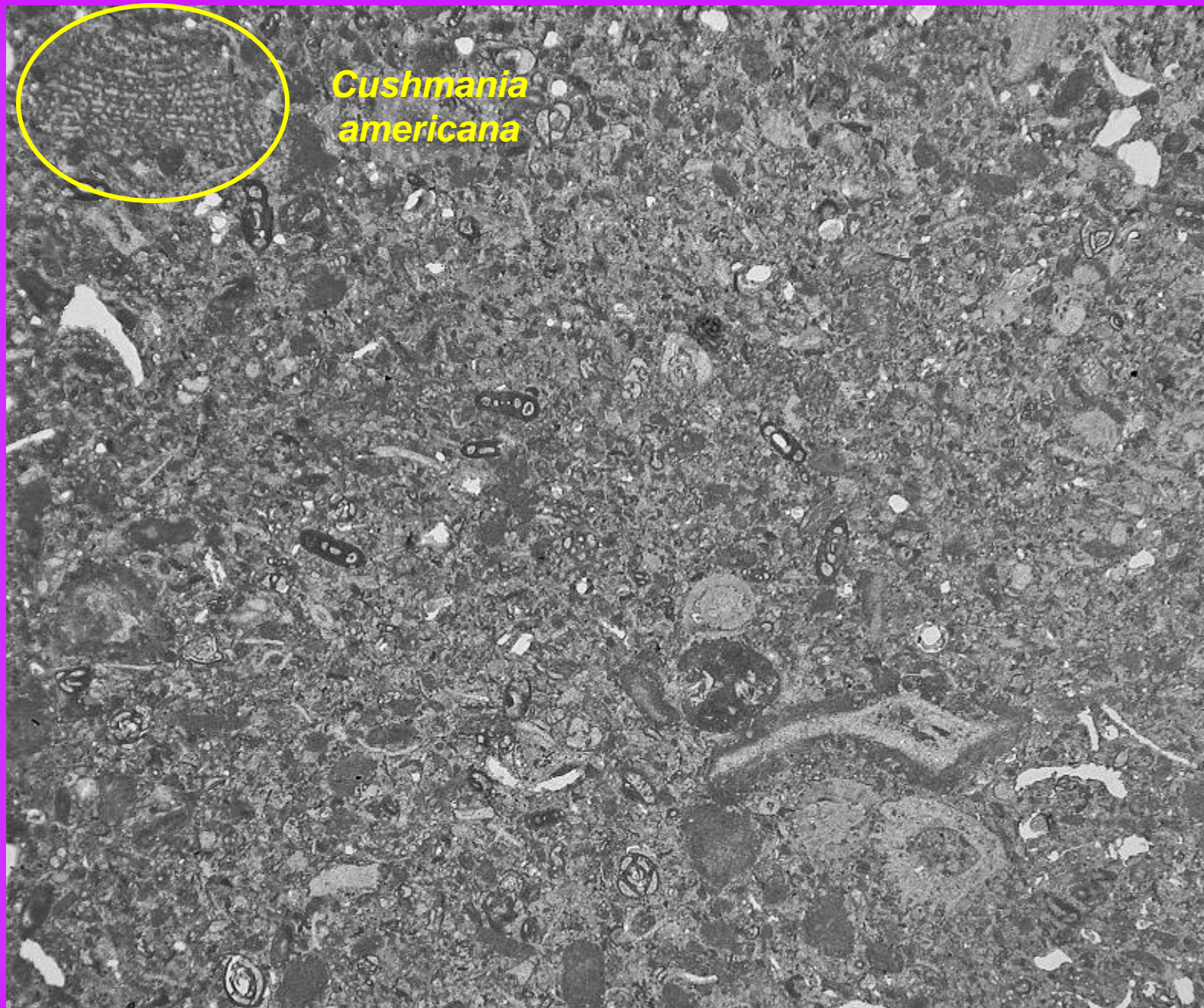


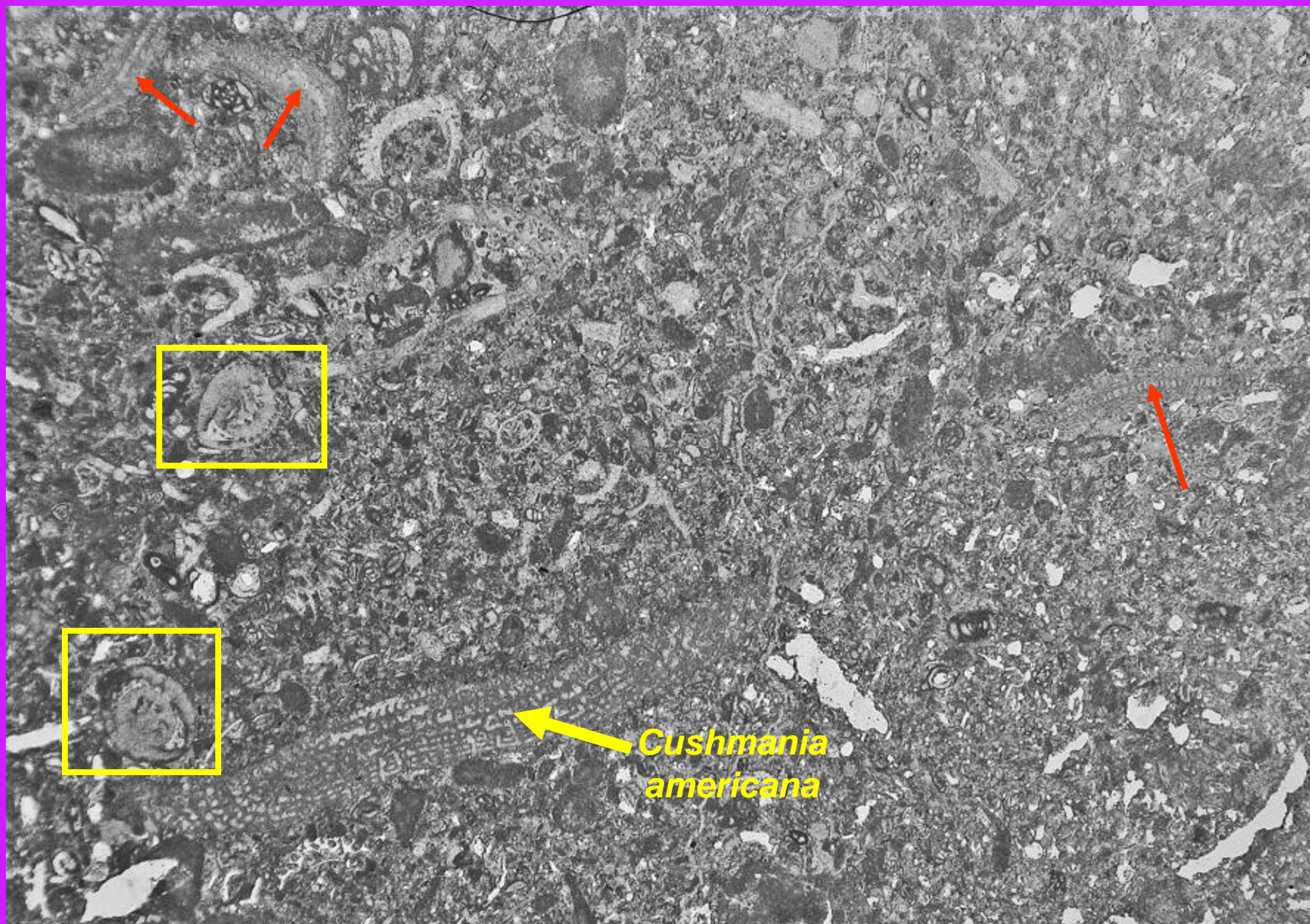


Lepidocyclina
(*Lepidocyclina*)
macdonaldi



Cushmania americana





 = Nummulites sp.

 → *Lepidocyclina*