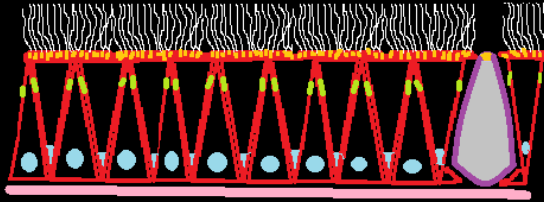
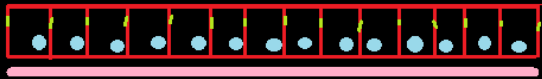


Epithelium: covering & lining tissue

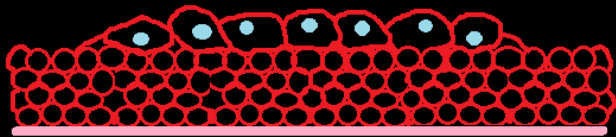
Ciliated, Pseudostratified Columnar Ep.



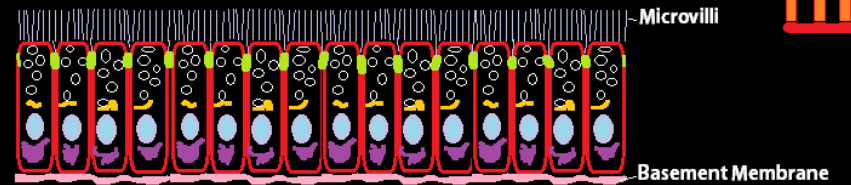
Cuboidal Ep.



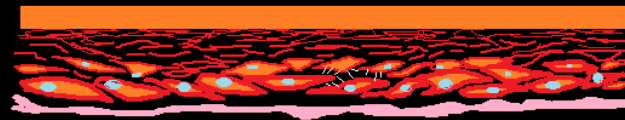
Transitional Ep.



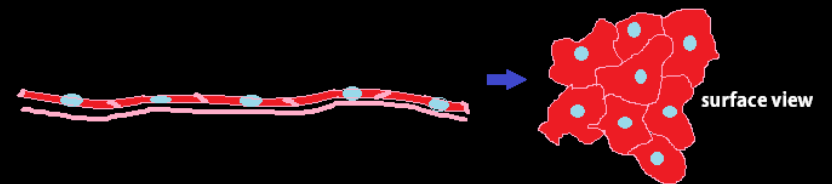
Columnar Ep.

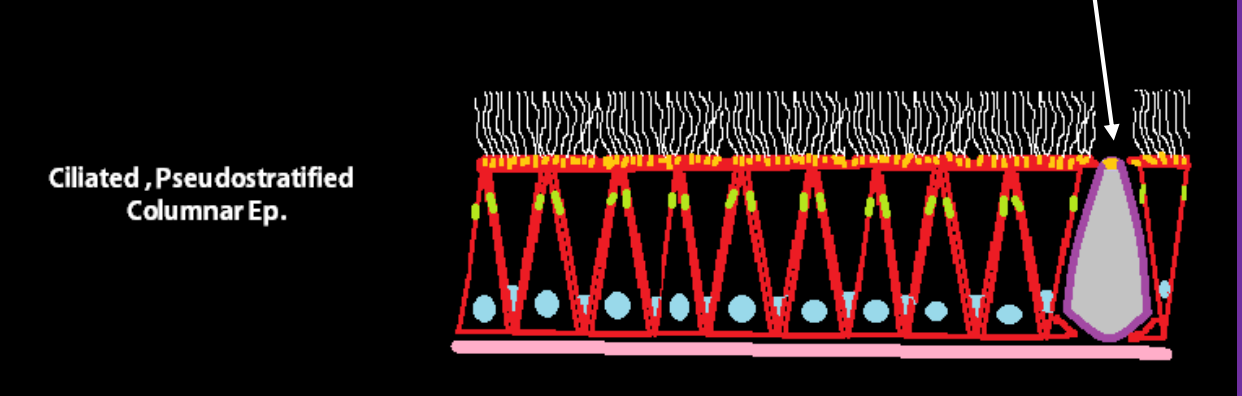
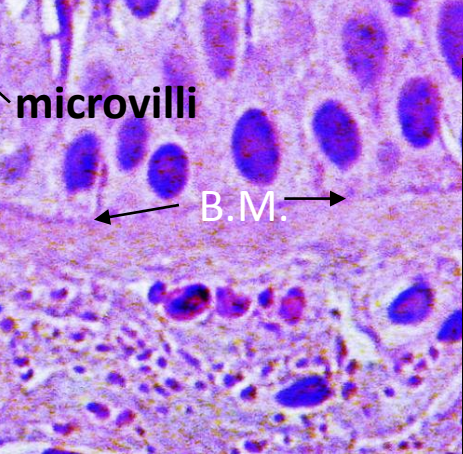
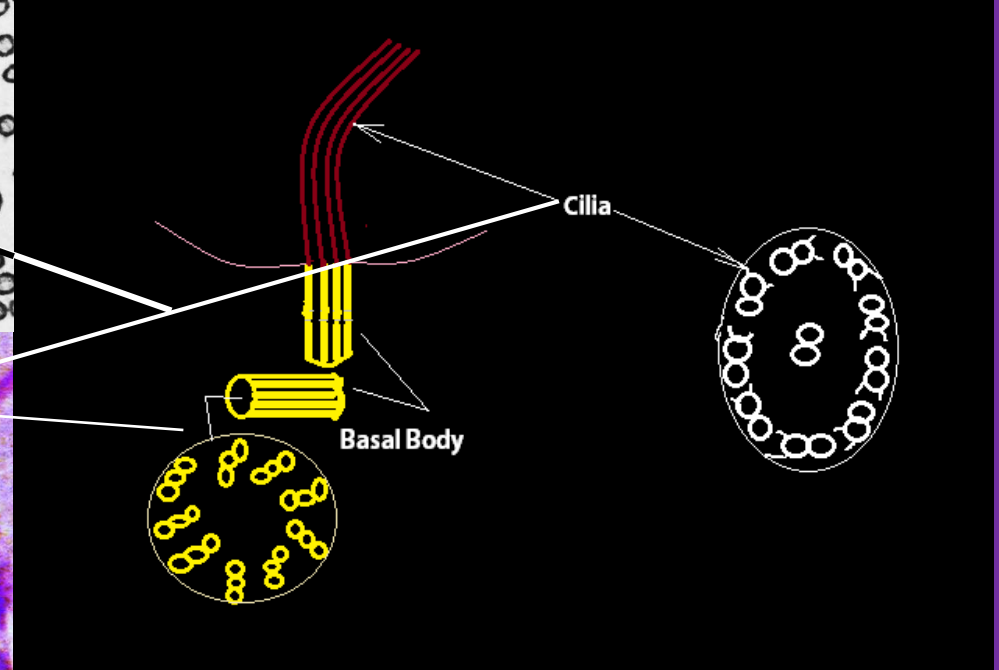
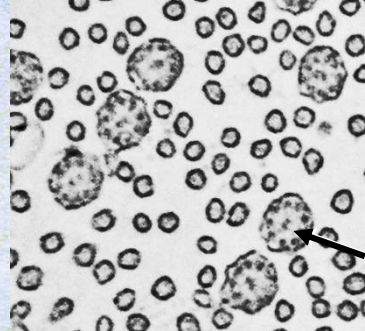
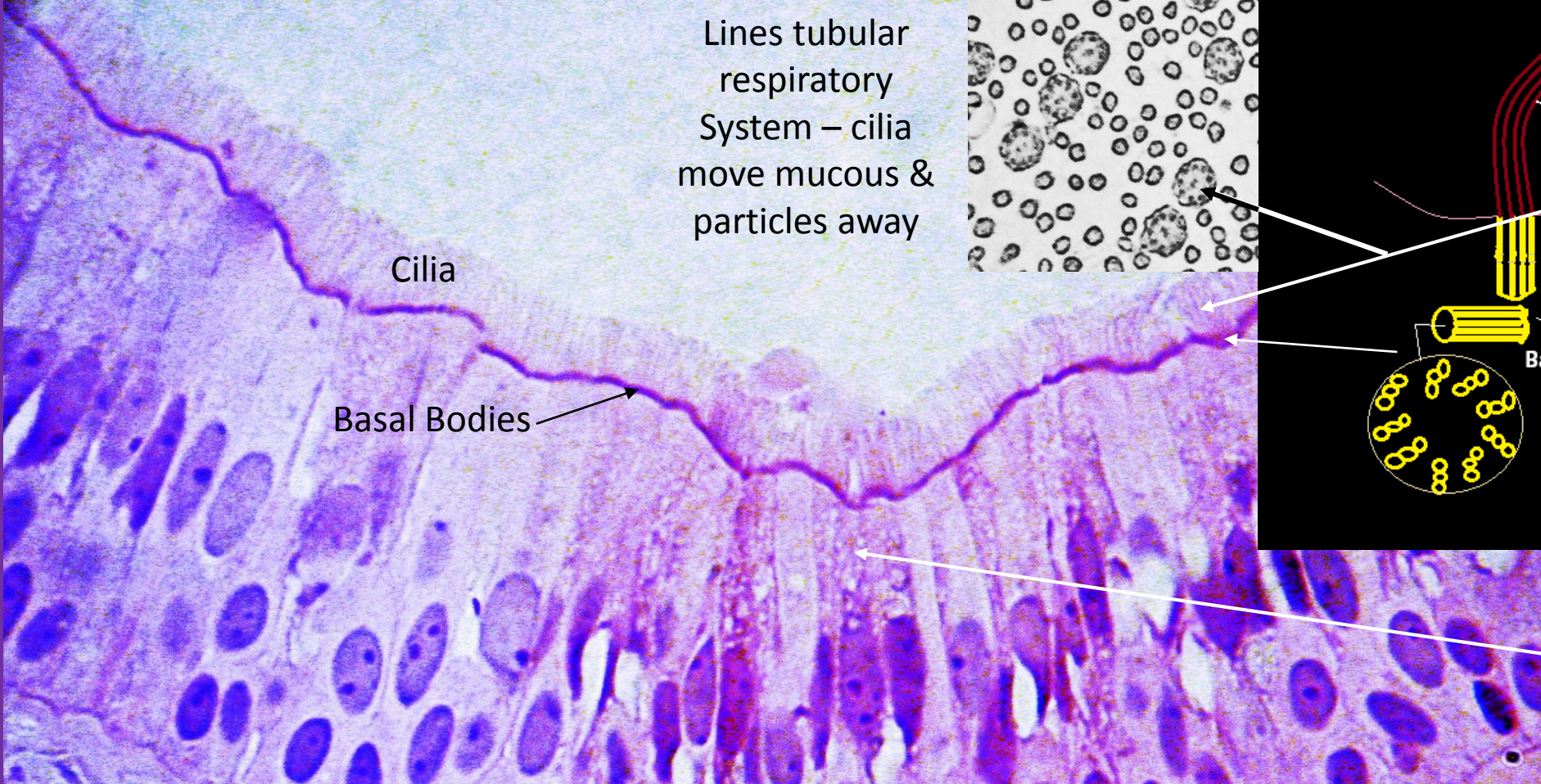


Stratified Squamous Ep.



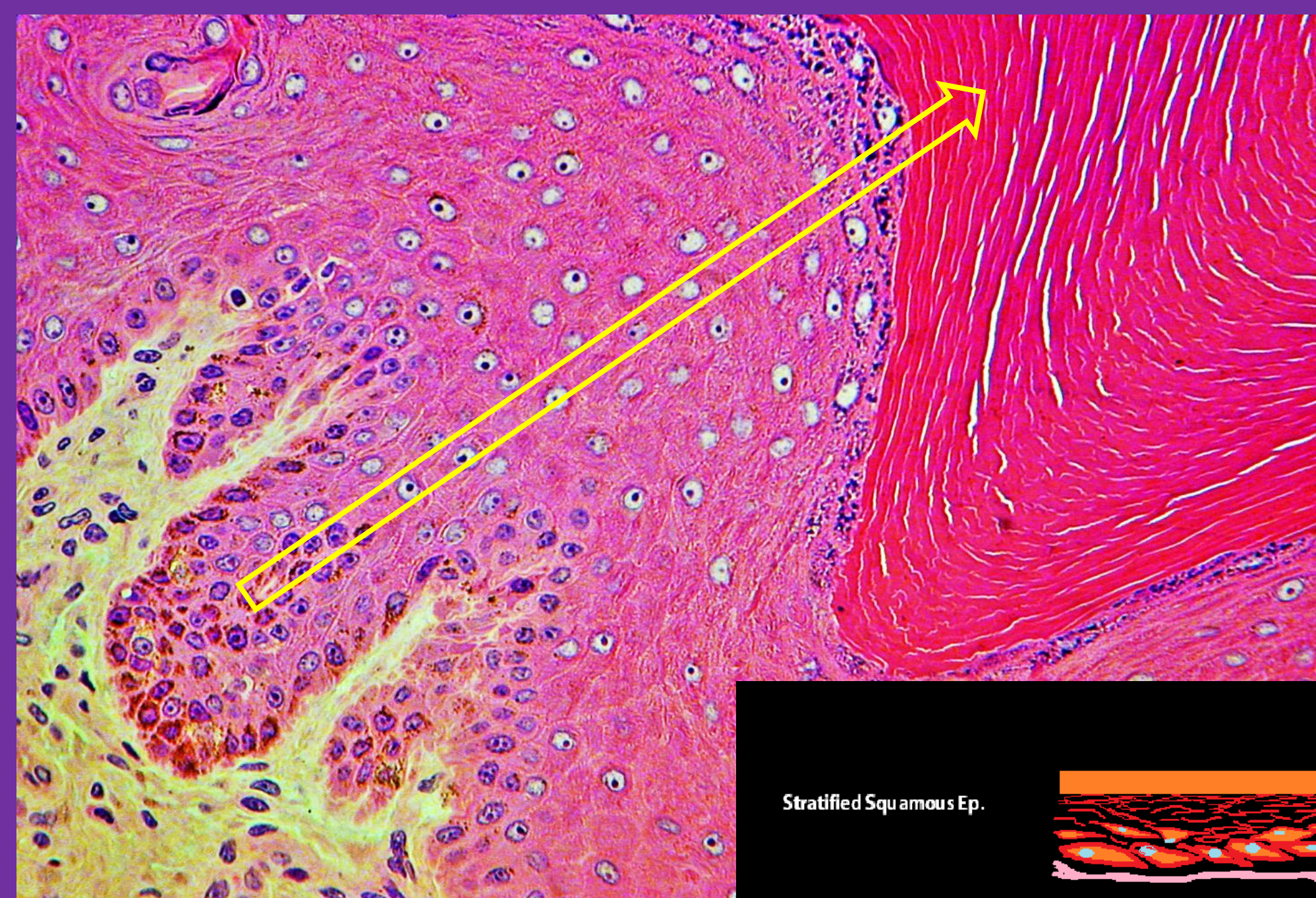
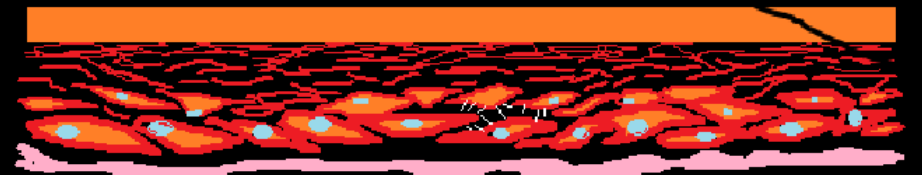
Simple Squamous Ep.



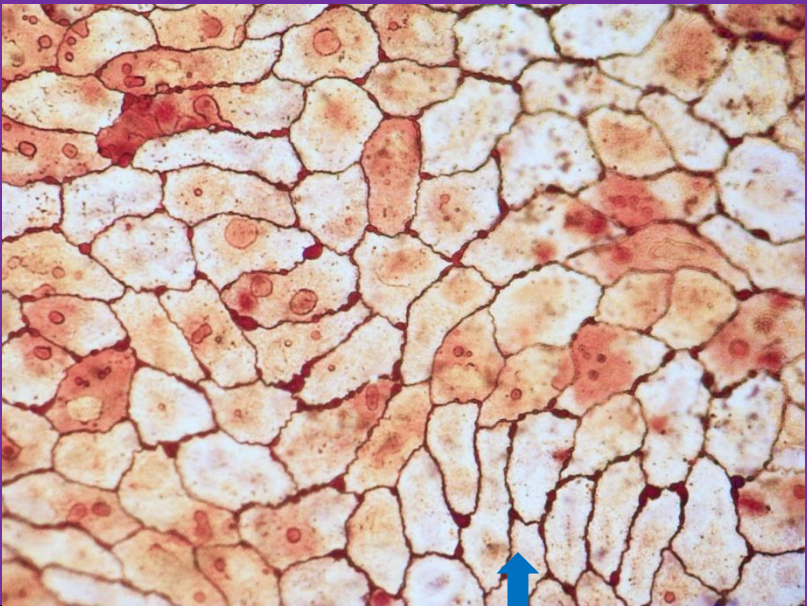
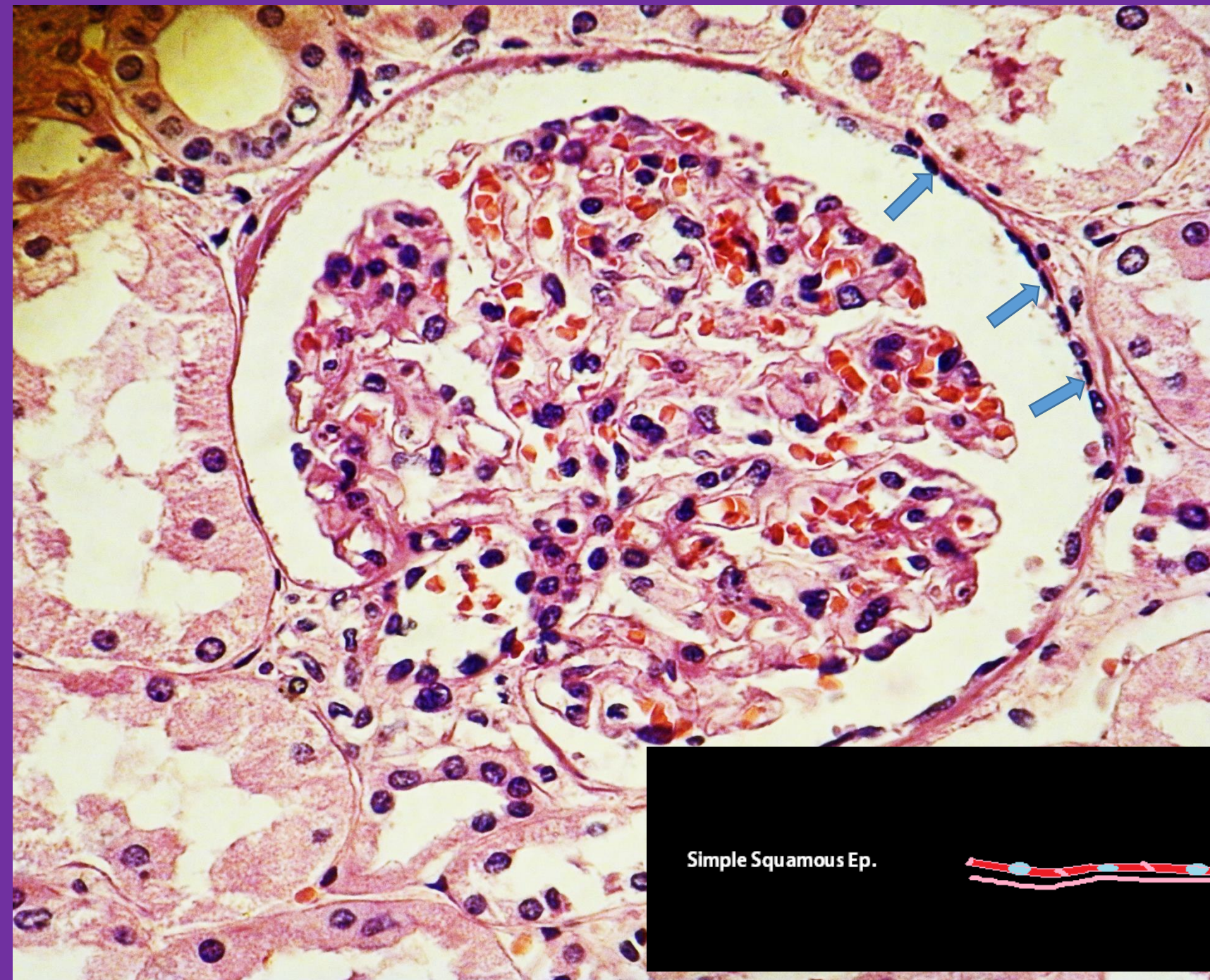


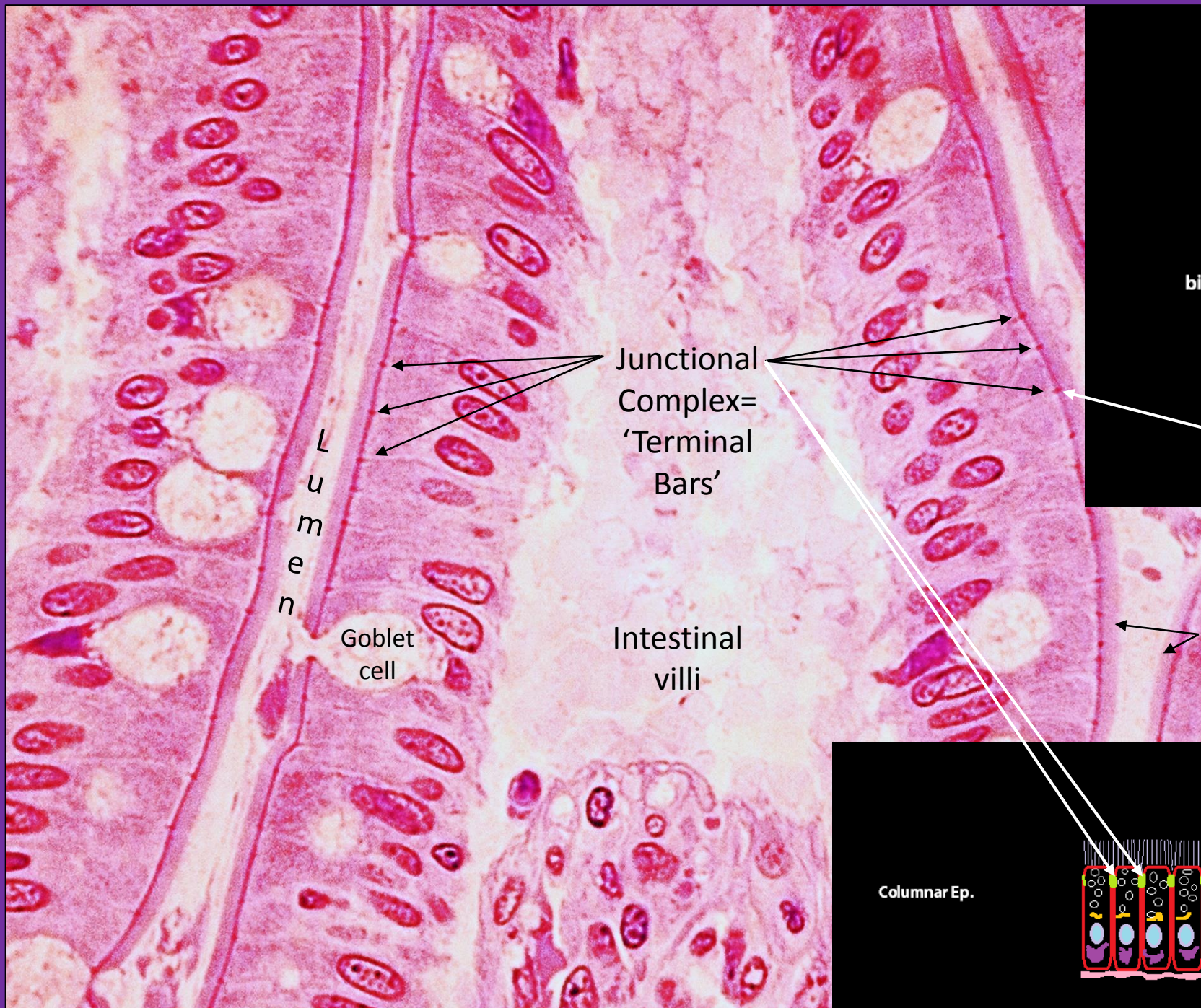
Skin , mouth,
pharynx,
esophagus.
vagina – rapid
replacement in
areas of stress
& friction

Stratified Squamous Ep.



Glomerular Capsule,
Blood vessel inner
lining, Lung alveoli –
rapid exchange of
gases, water & ions



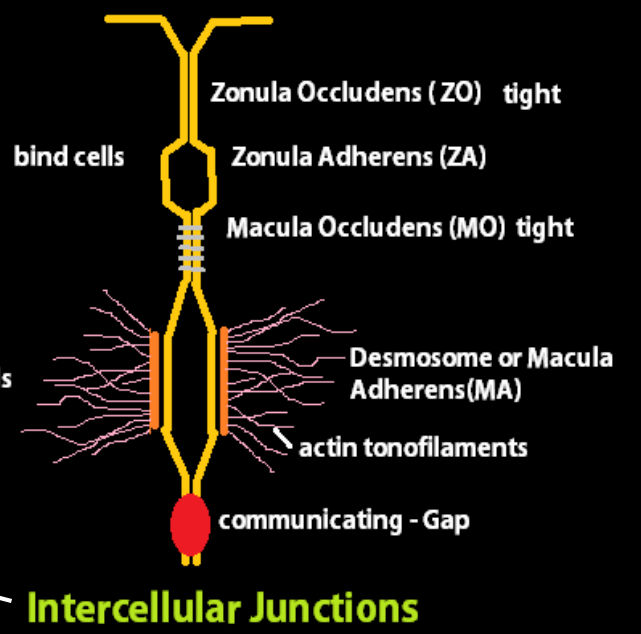


L
u
m
e
n

Goblet
cell

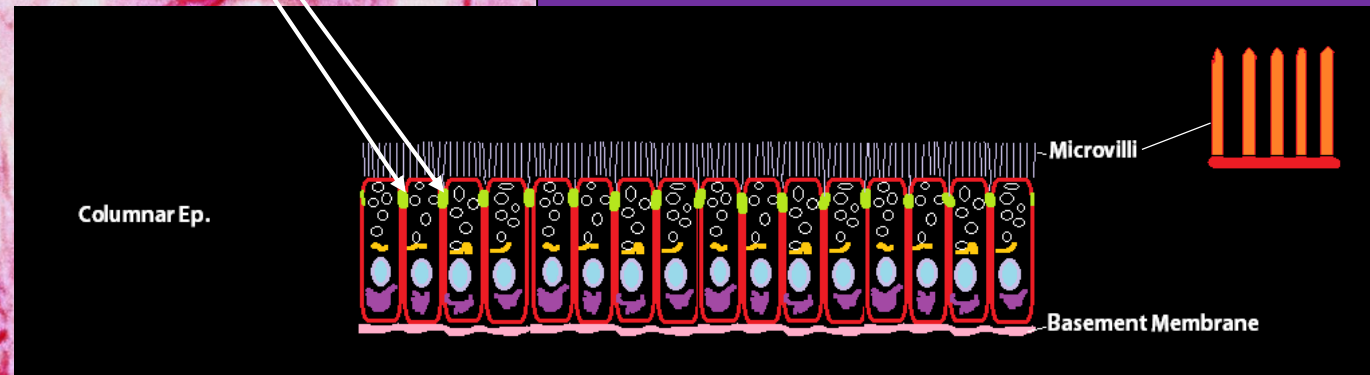
Junctional
Complex=
'Terminal
Bars'

Intestinal
villi



Microvilli

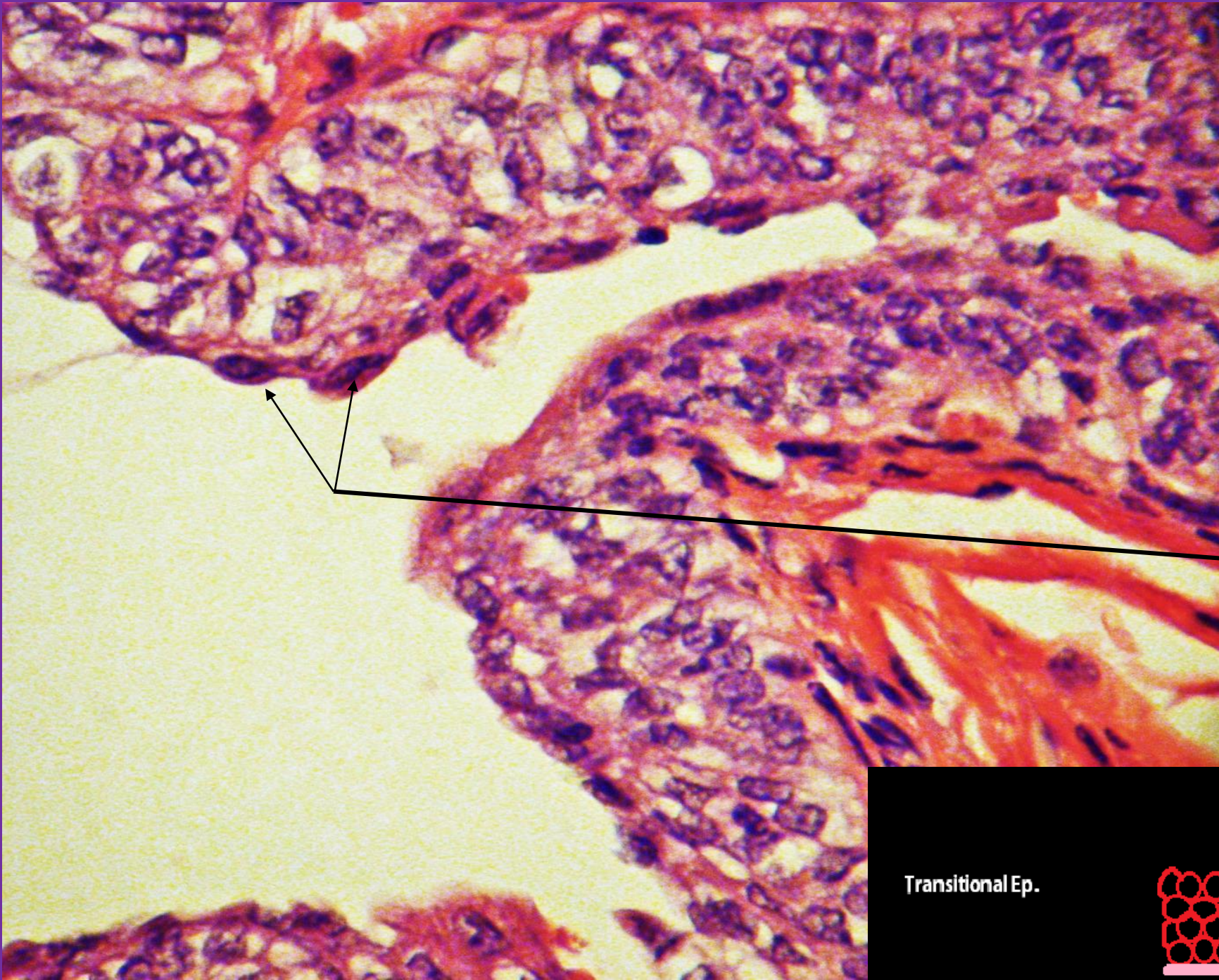
Gut - absorbtion



Columnar Ep.

Microvilli

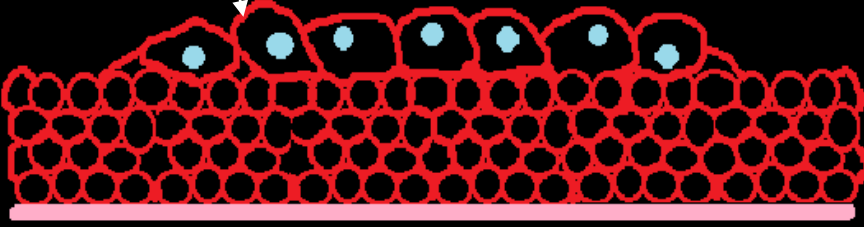
Basement Membrane

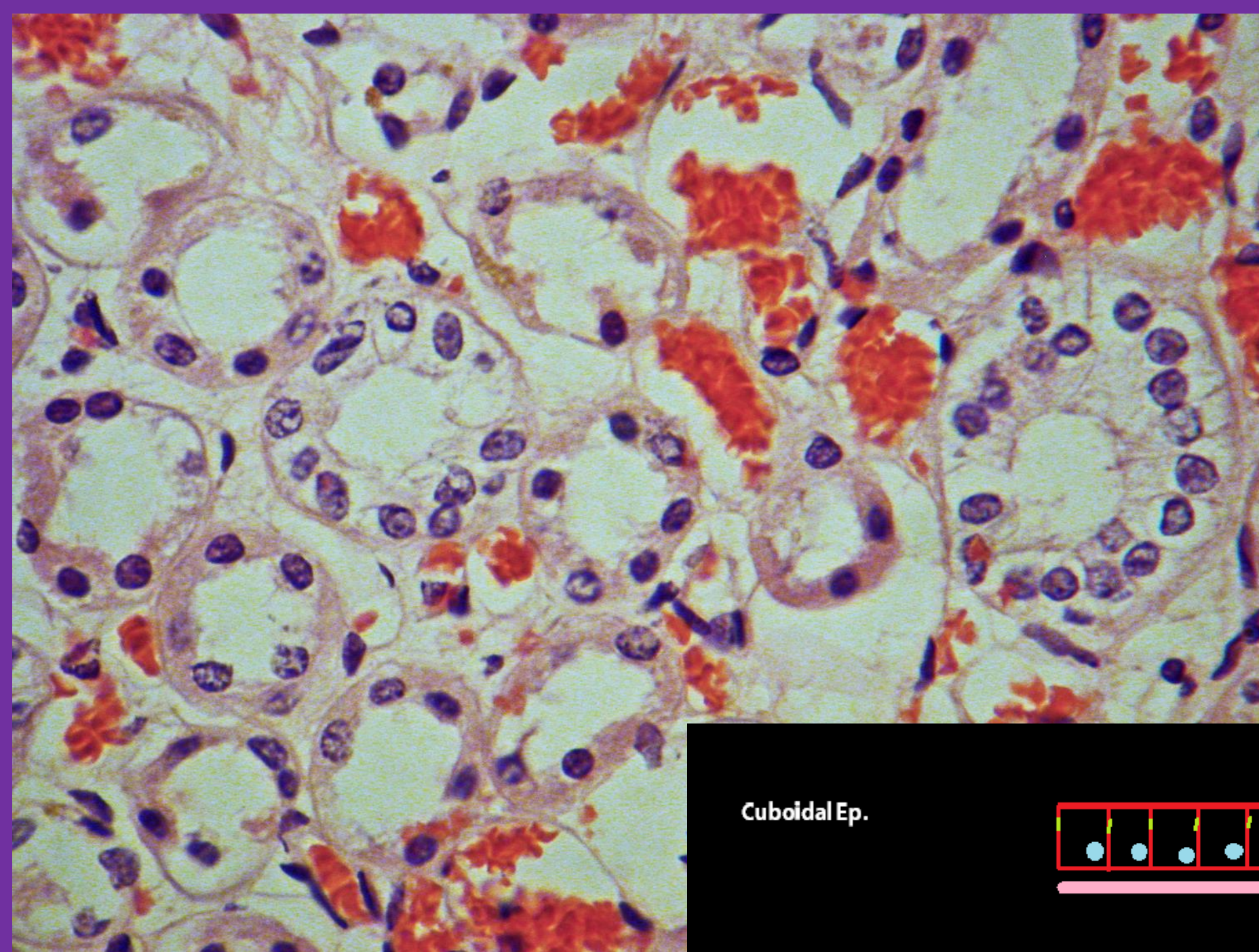


Urinary Tract –
ureters, bladder,
urethra

Dome Cells – roll
when stretched

Transitional Ep.





Gland ducts,
kidney
tubules

Cuboidal Ep.

