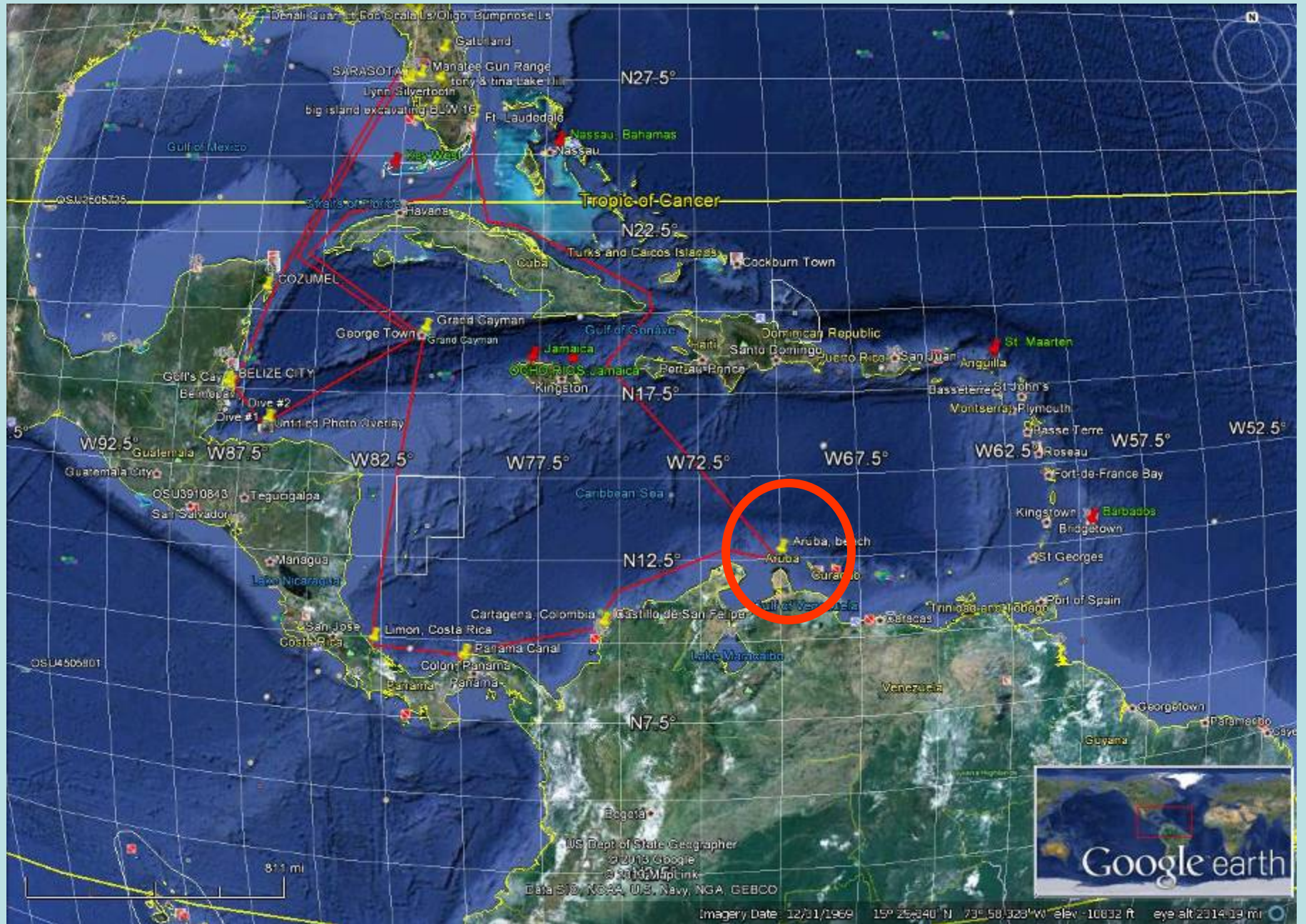


**Foraminifera of the back reef lagoon  
facies of ARUBA**



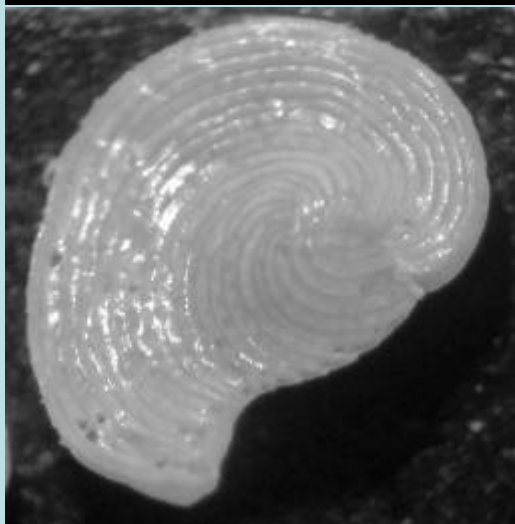
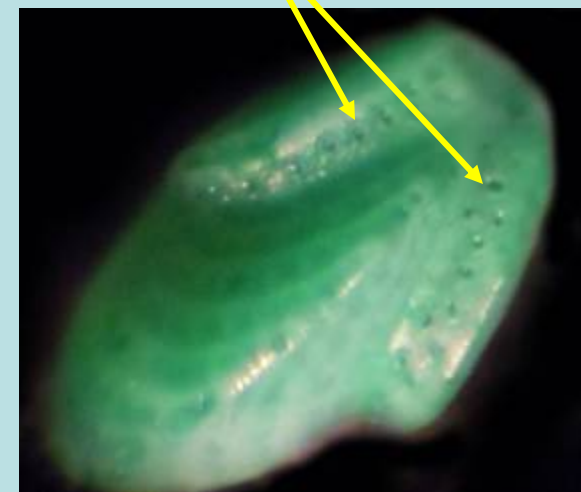
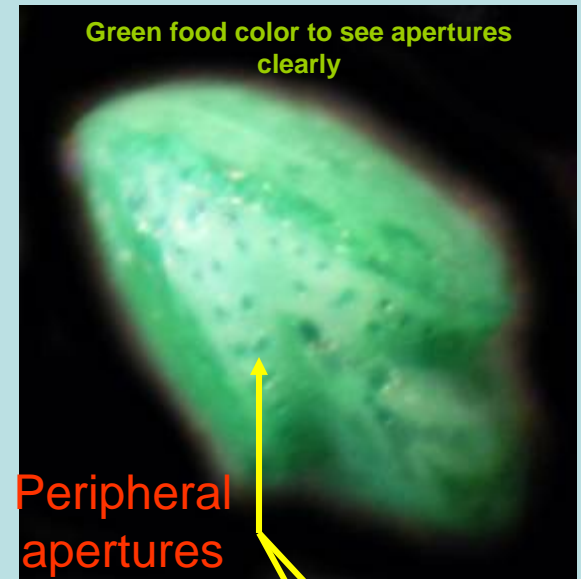




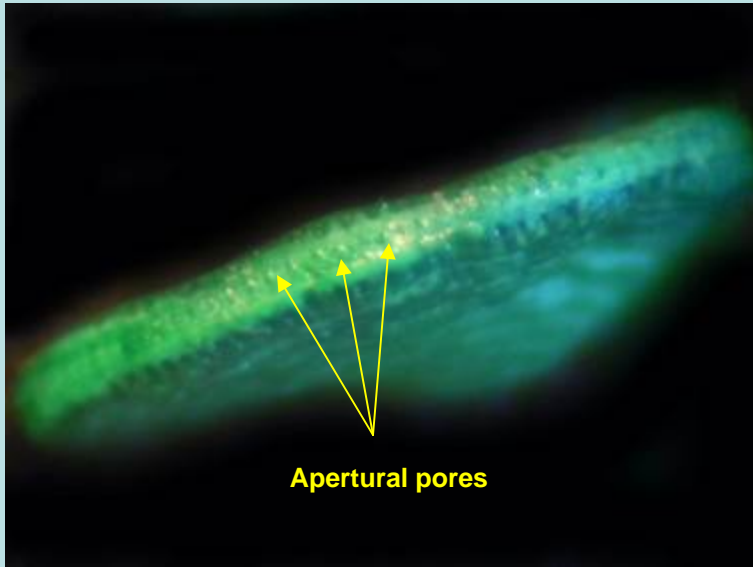




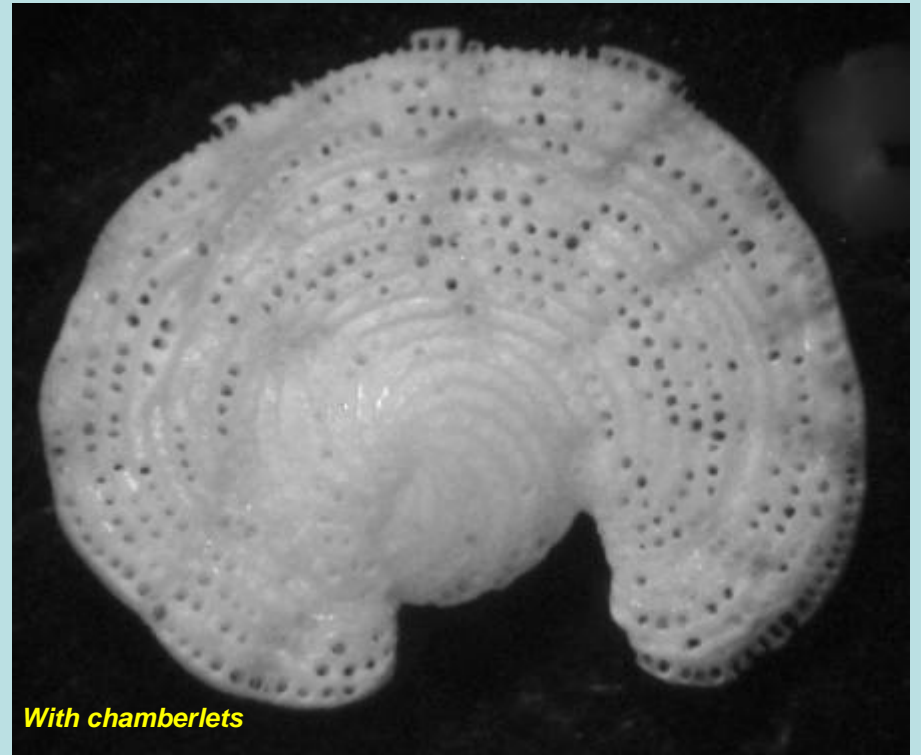
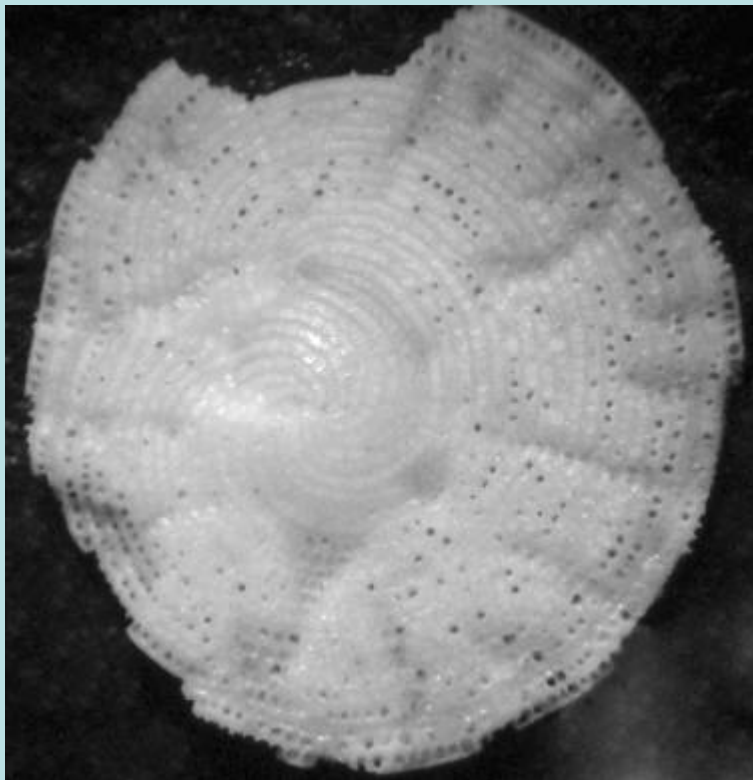
Circle is area sampled



*Archaia angulatus*  
The most prolific foram species in the lagoon



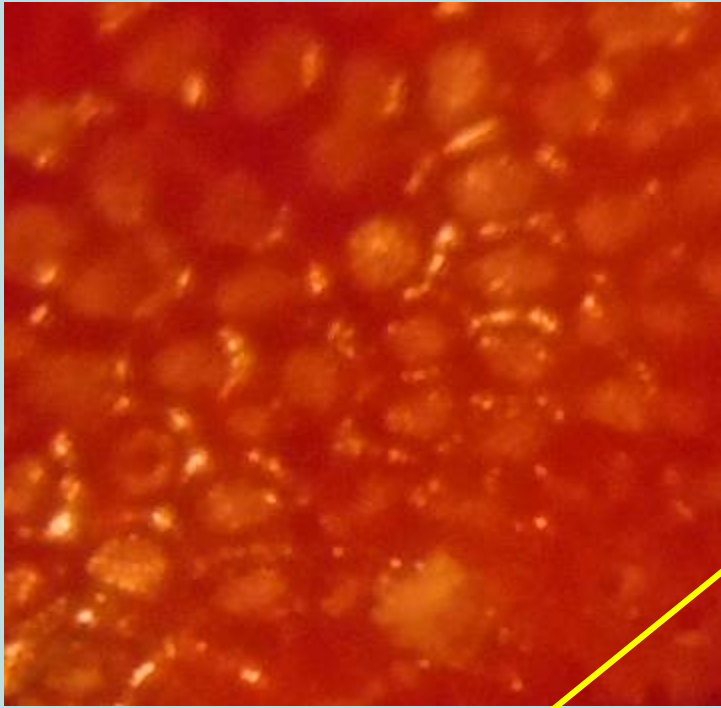
Apertural pores



With chamberlets

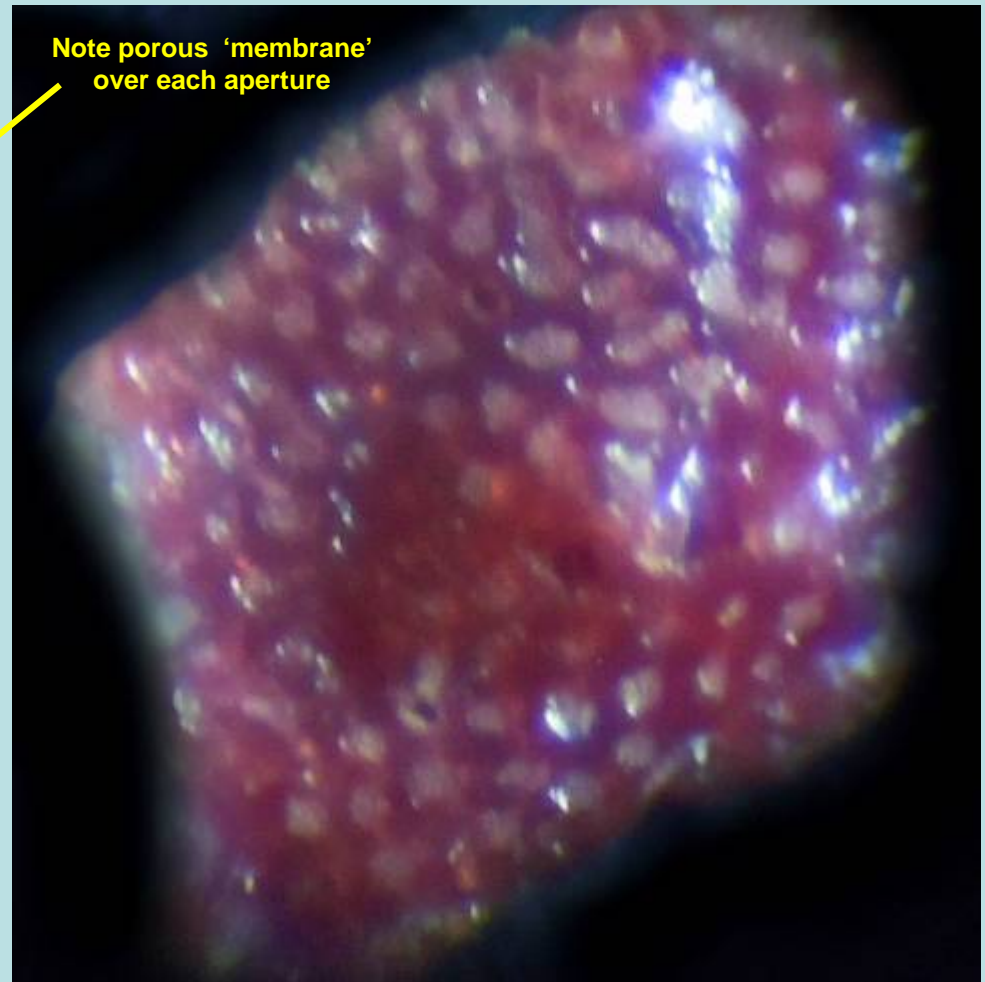
*Cyclorbiculina*  
*compressa*



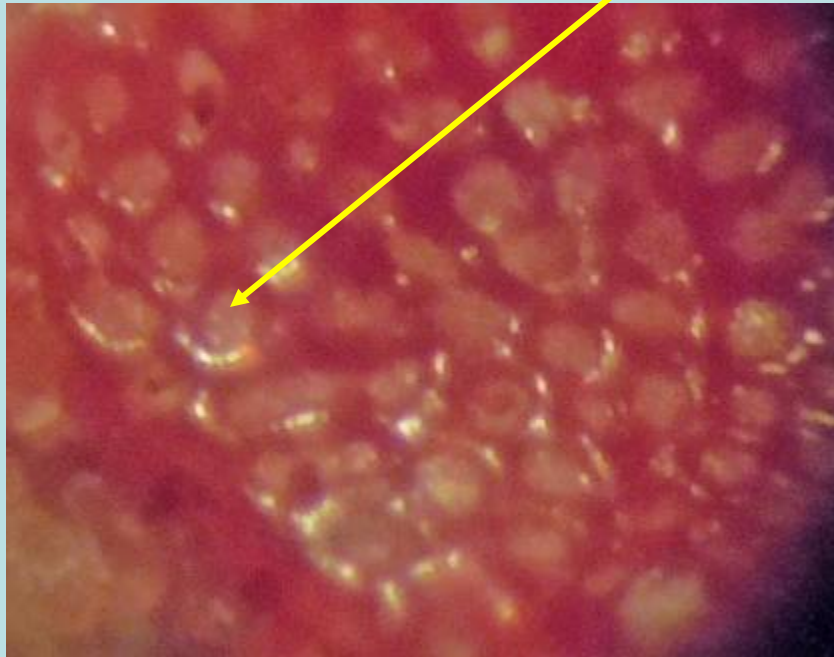


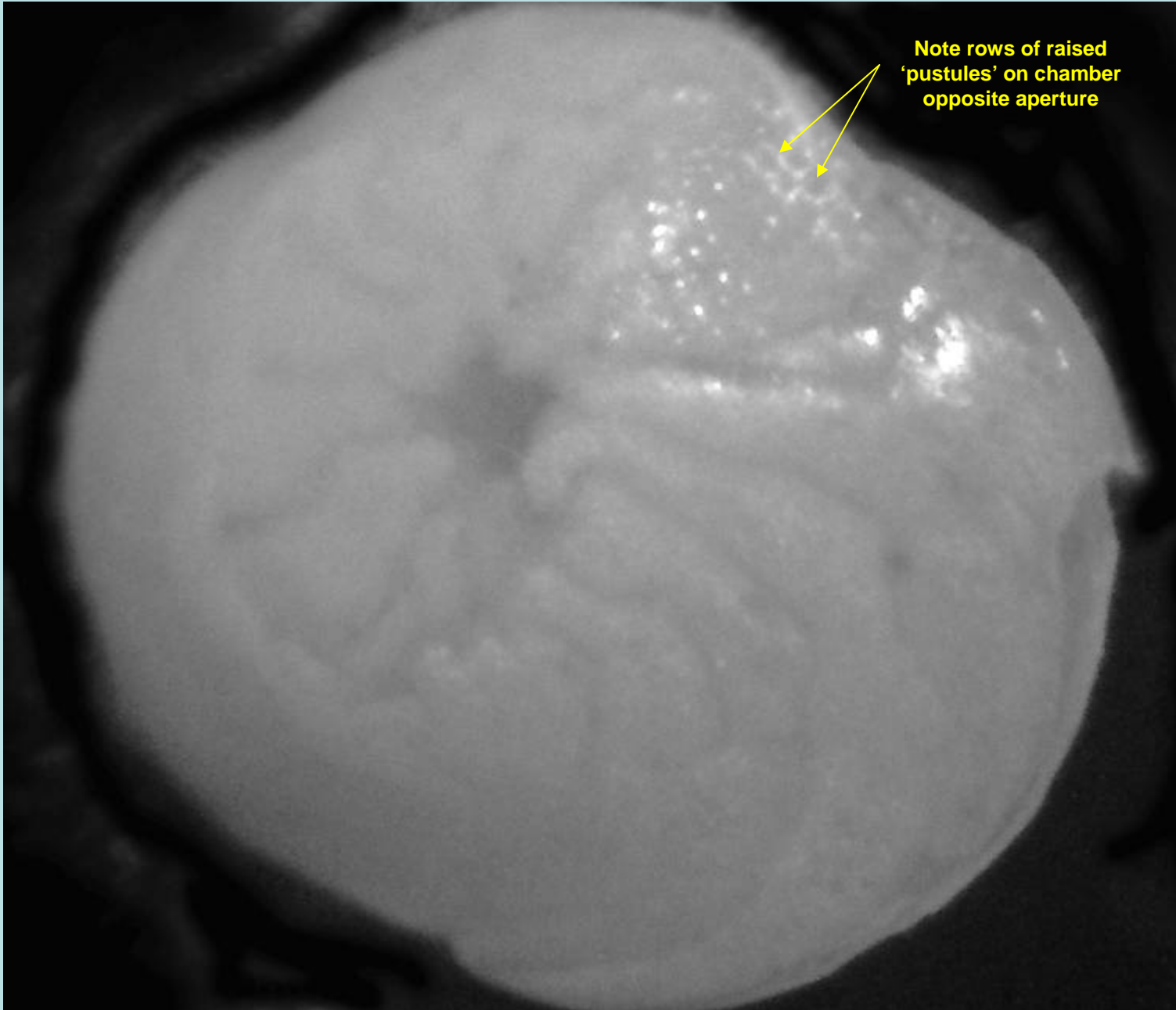
*Homotrema rubrum*

the greatest in terms of foram  
biomass – covers reef & debris  
with red spots 1-5 cm



Note porous 'membrane'  
over each aperture





Note rows of raised  
'pustules' on chamber  
opposite aperture

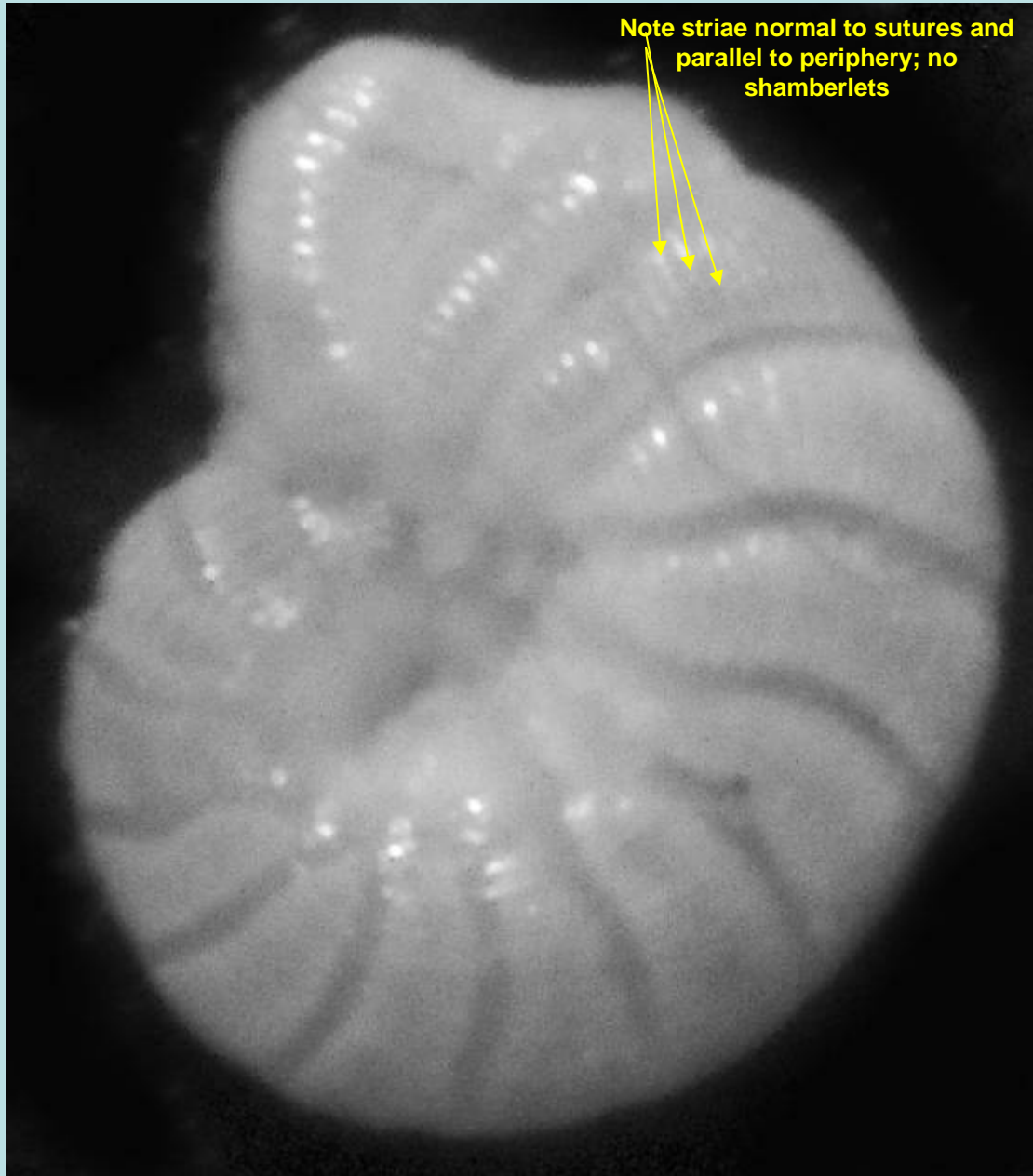
*Amphistegina gibbosa* also very common



Note that triserial  
becomes uniserial in  
this specimen and  
funnel-like tooth at top

*Clavulina tricarinata*

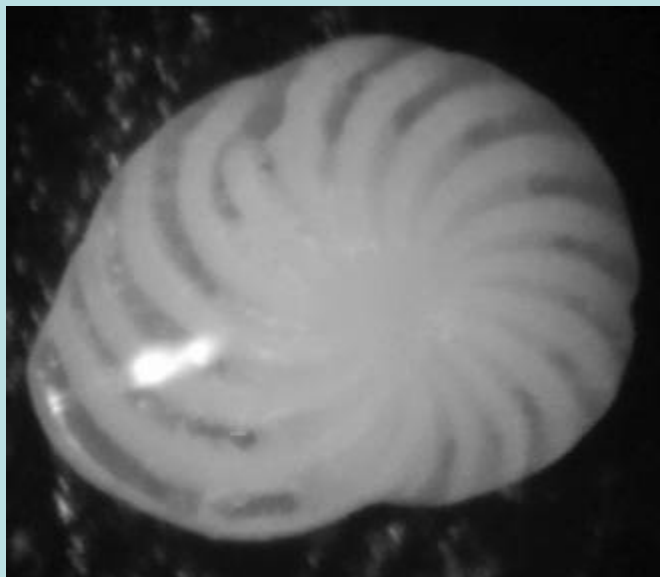




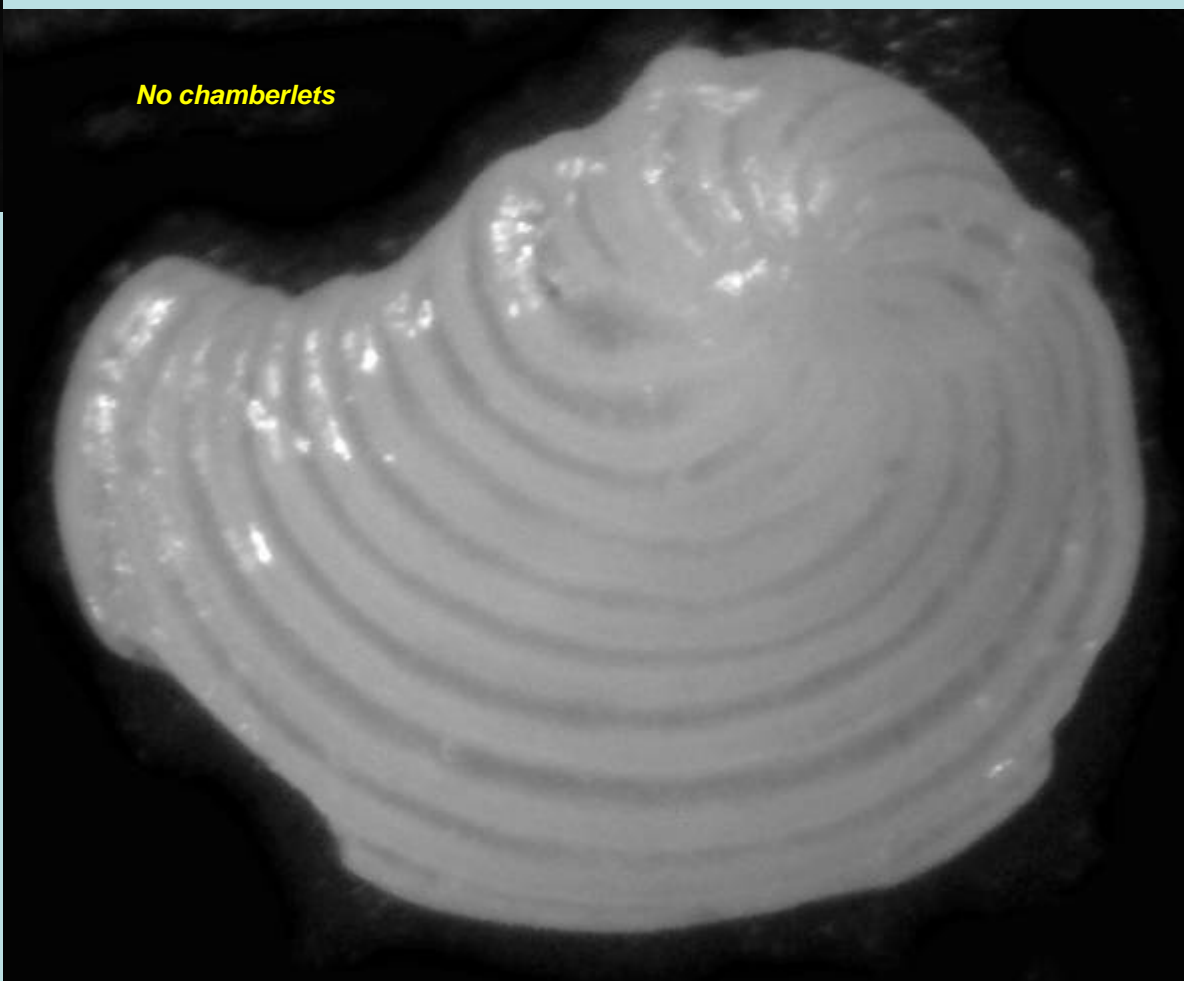
*Peneroplis pertusis*

juvenile & adult

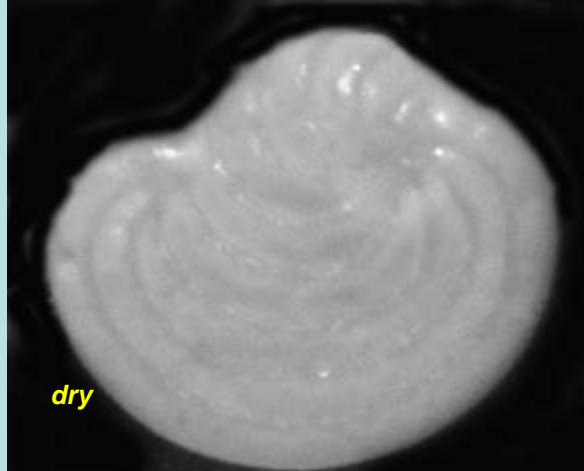
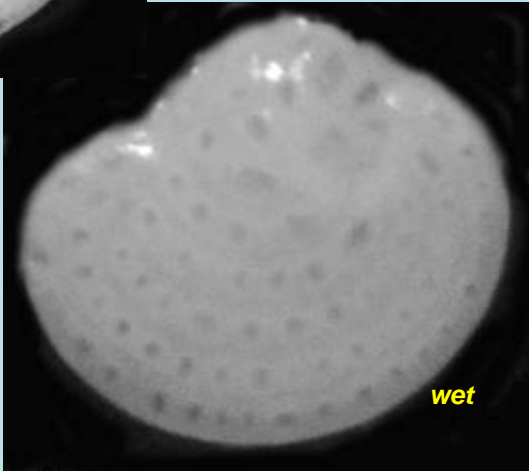
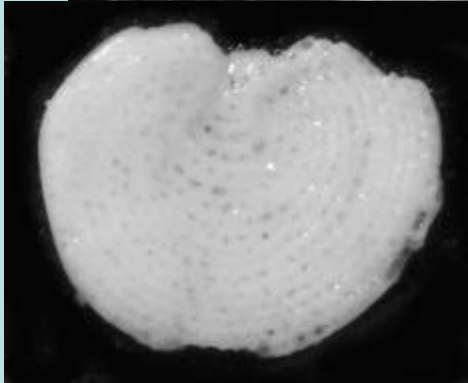
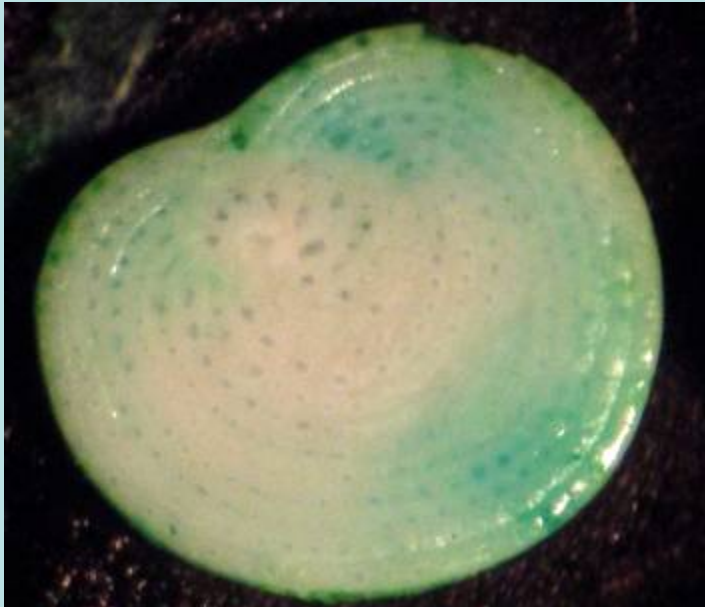
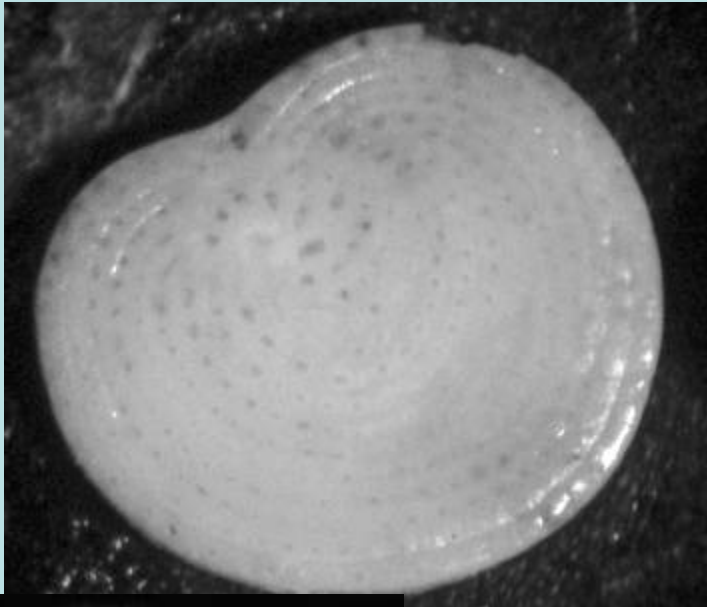
*Laevipeneroplis proteus*



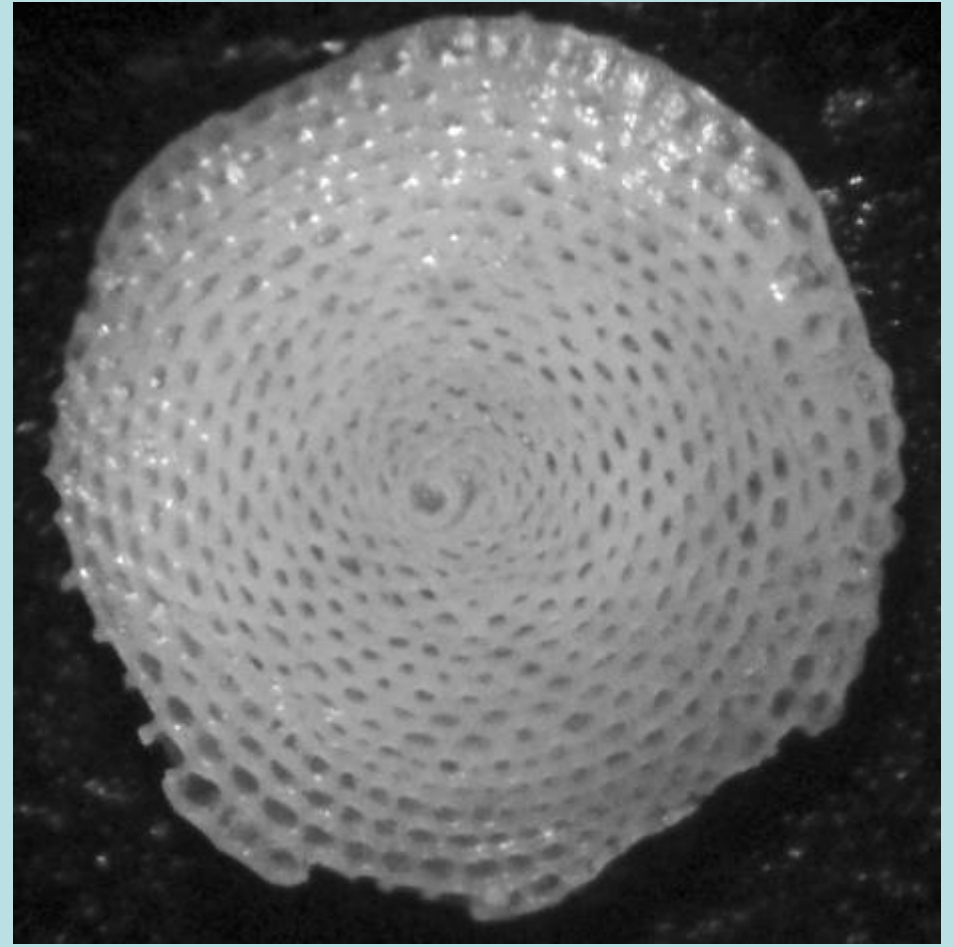
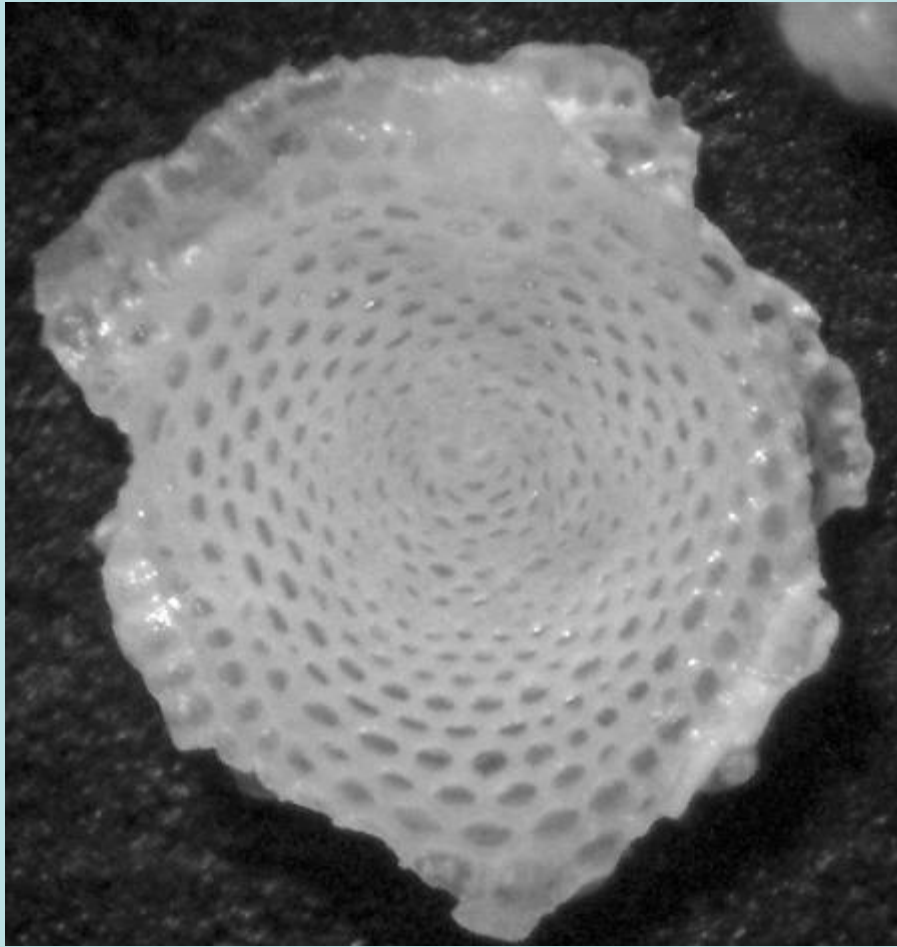
No chamberlets





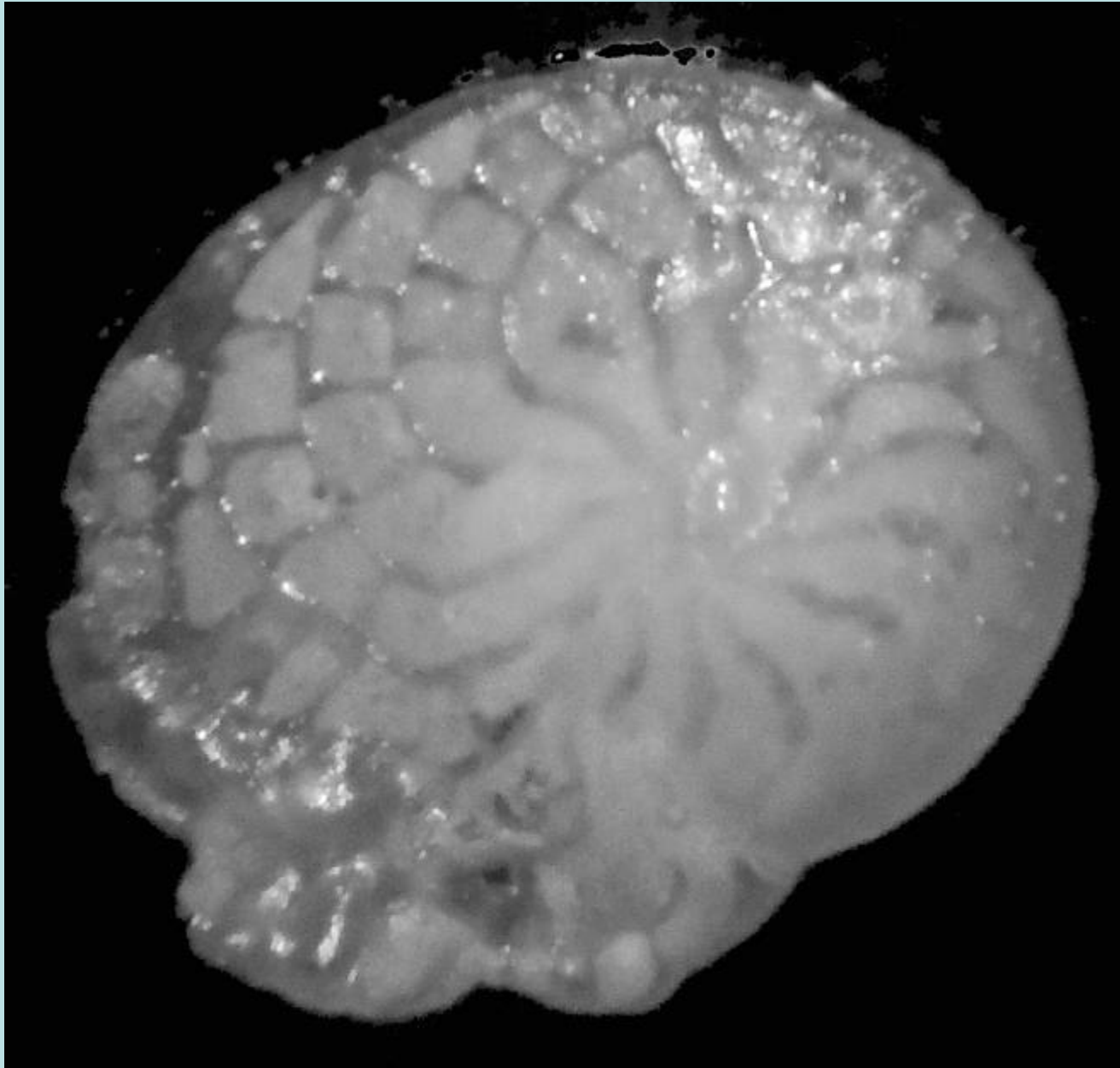


*Broeckina orbitolitoides*

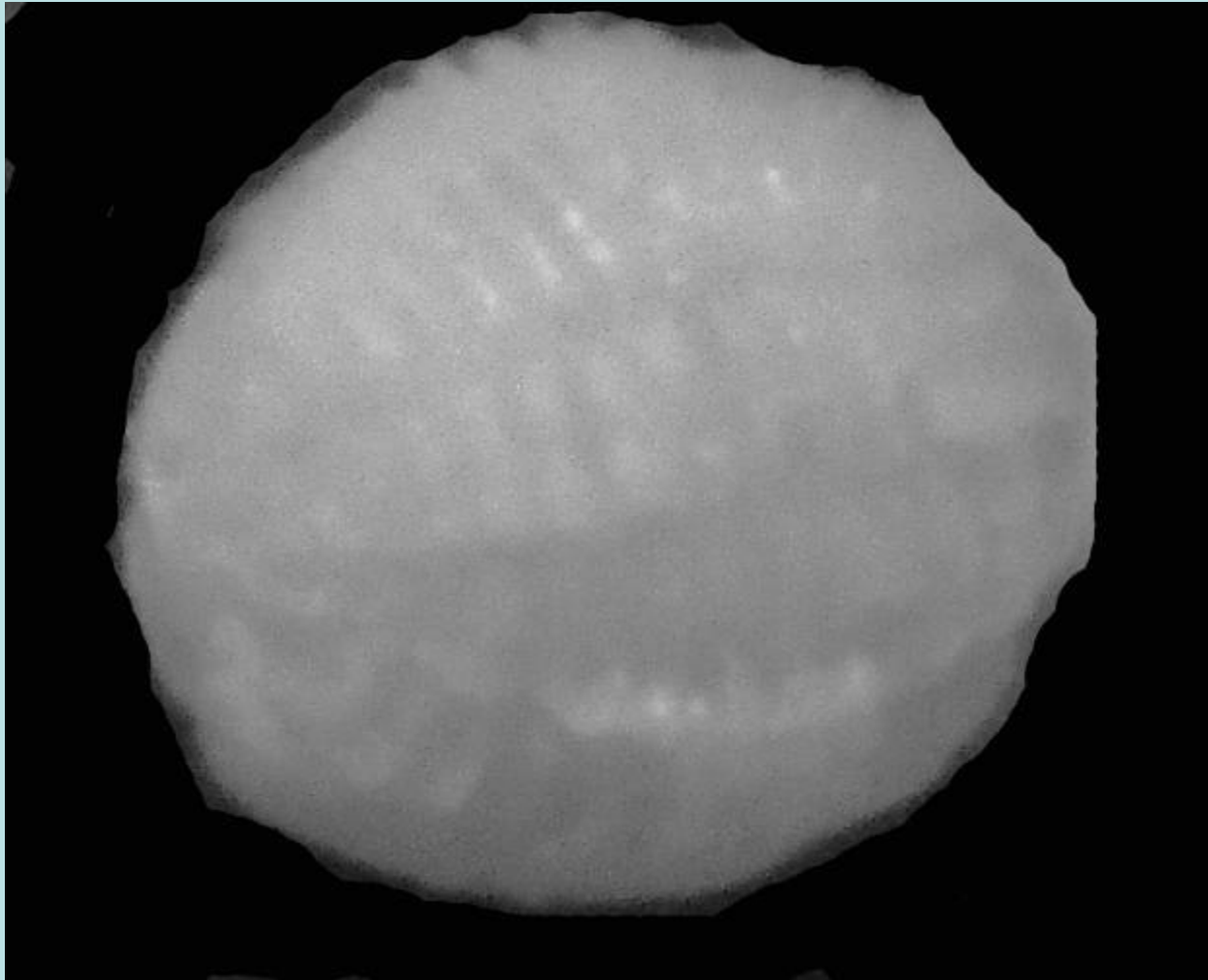


*Sorites marginalis*



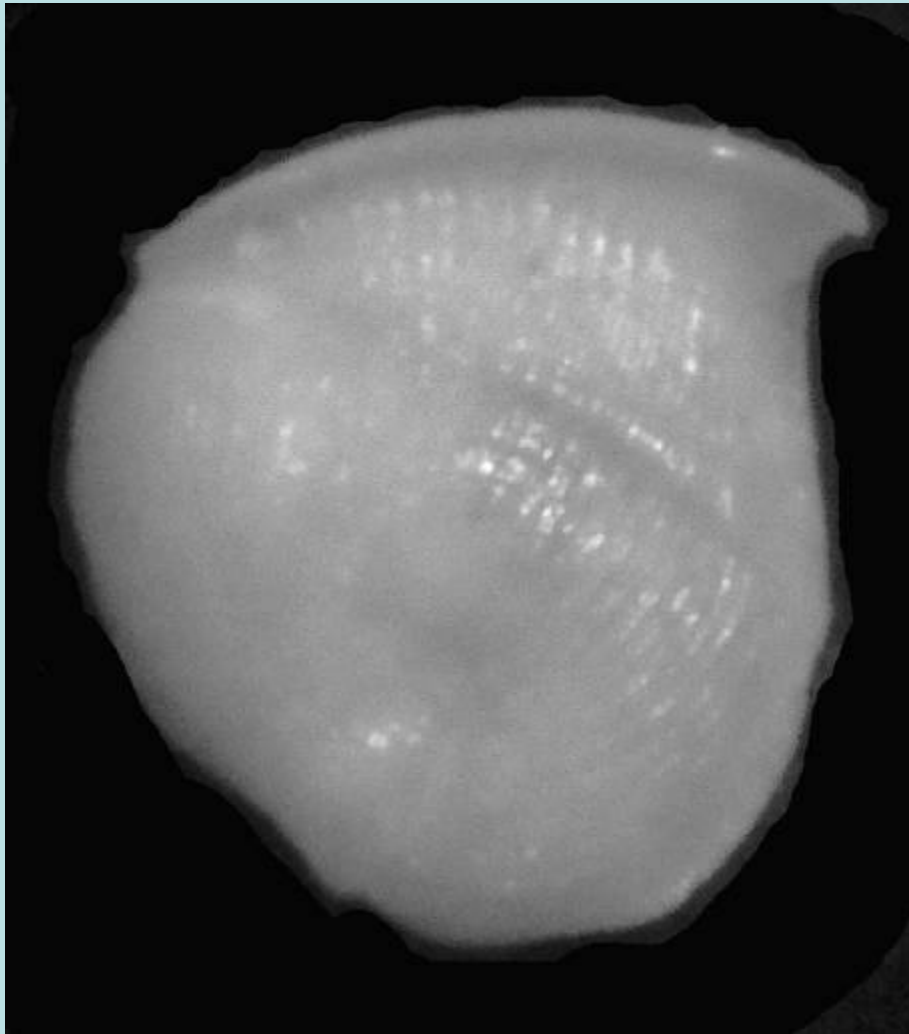


*Heterostegina antillarum*

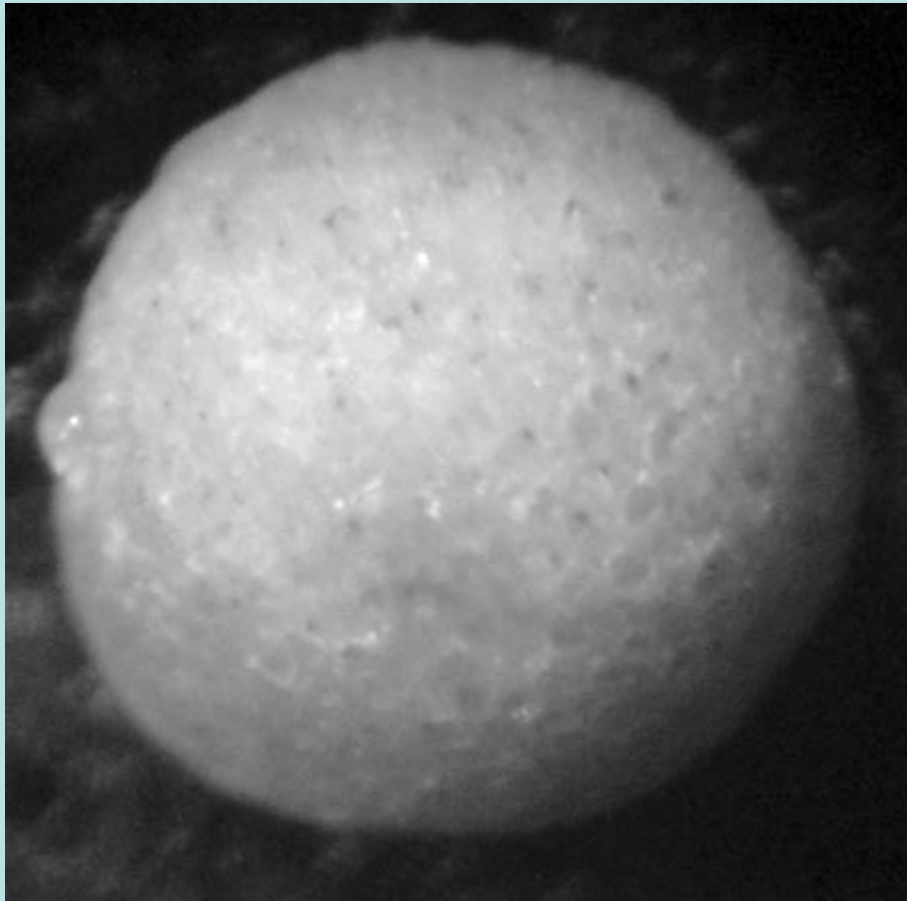


*Borelis pulchra*

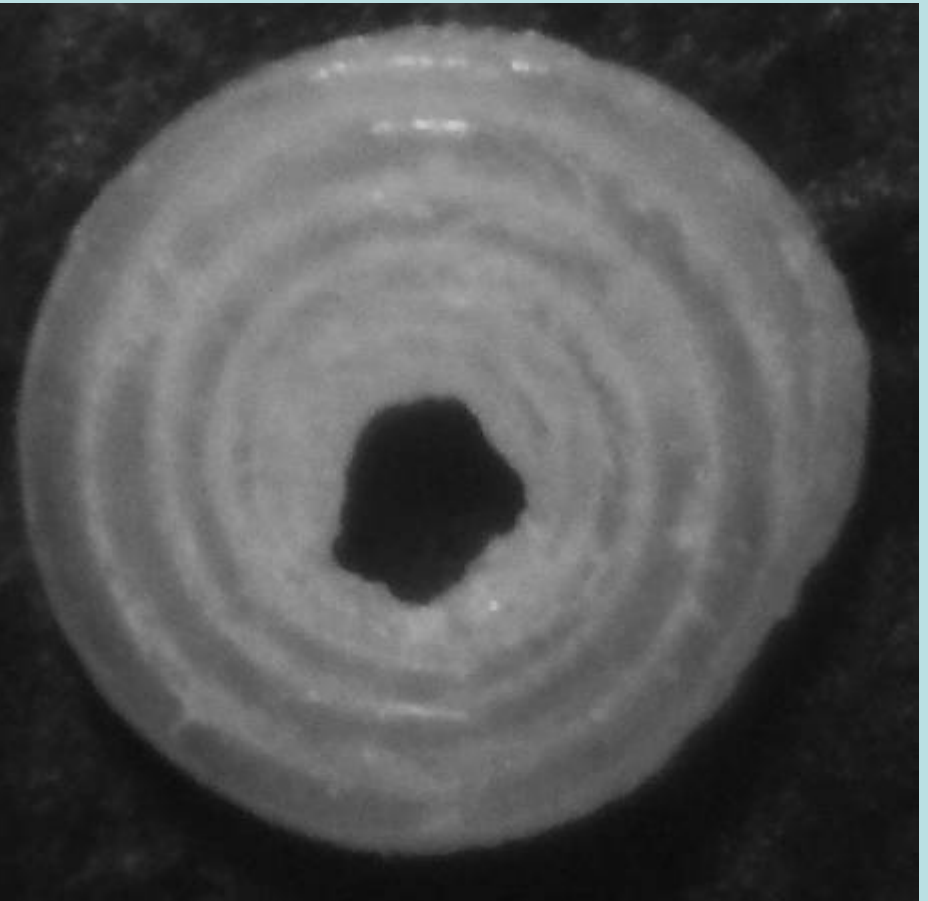




*Articulina sp.*

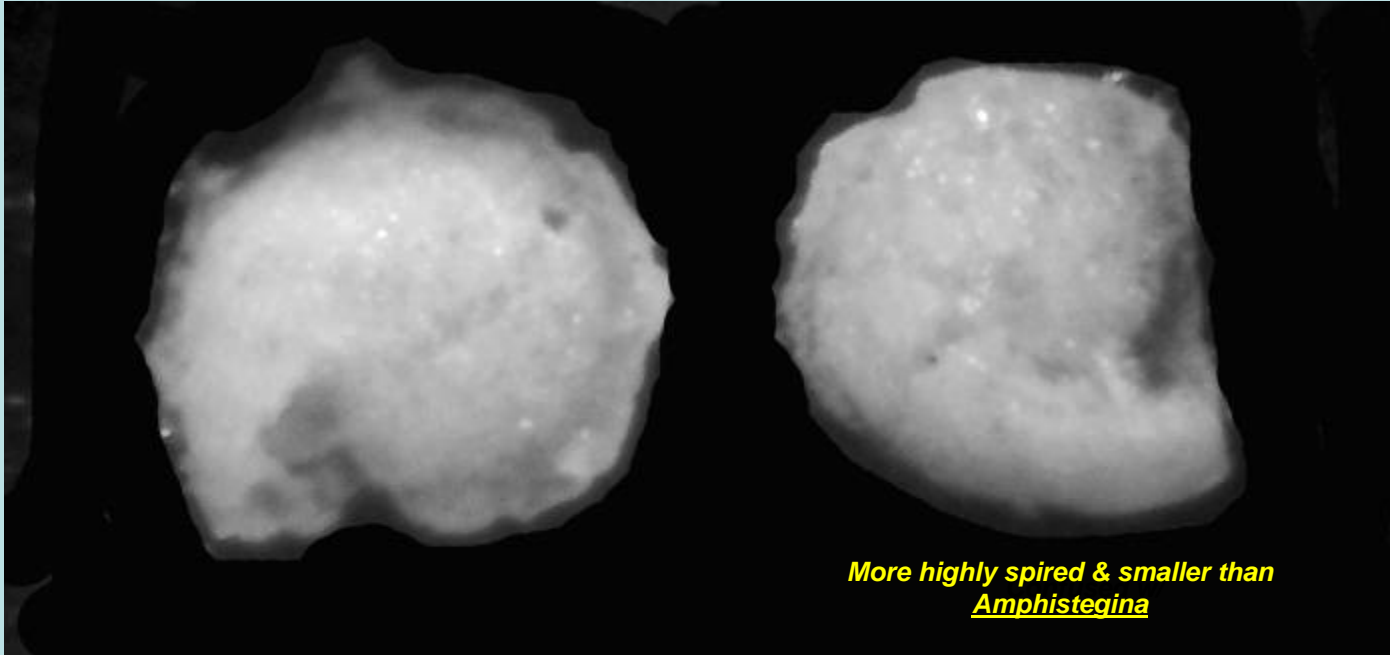


*Discogypsina vesicularis*



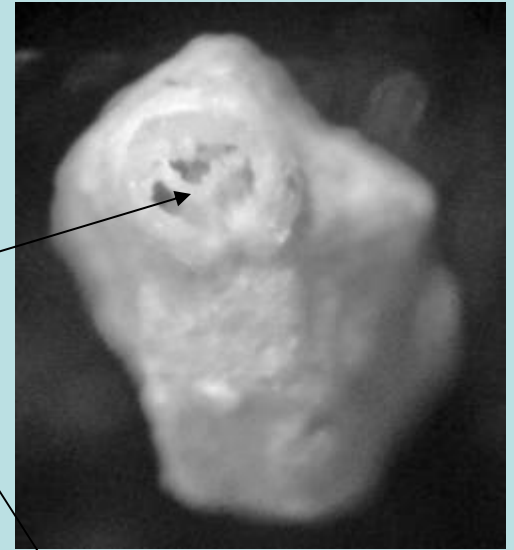
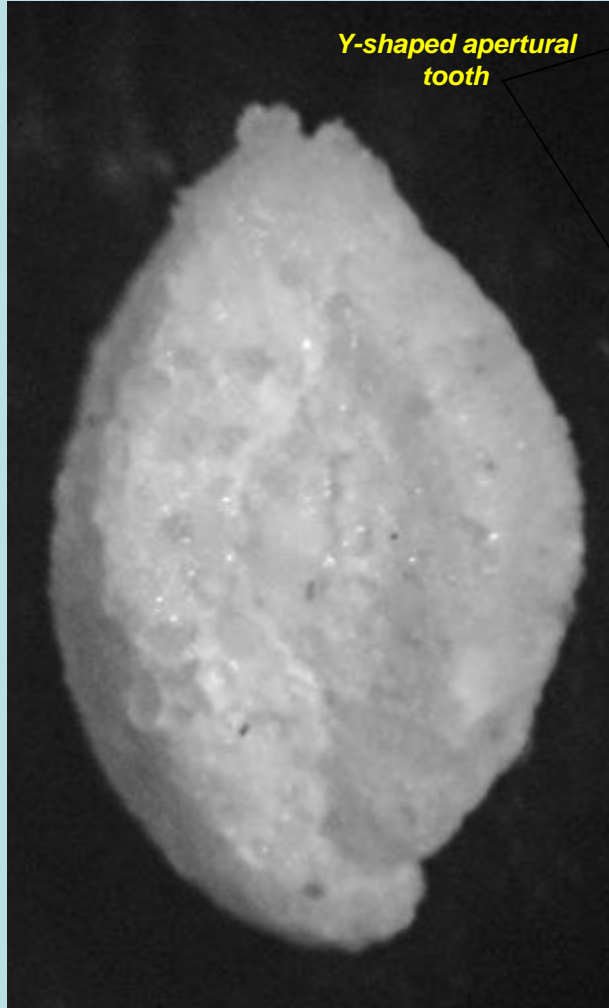
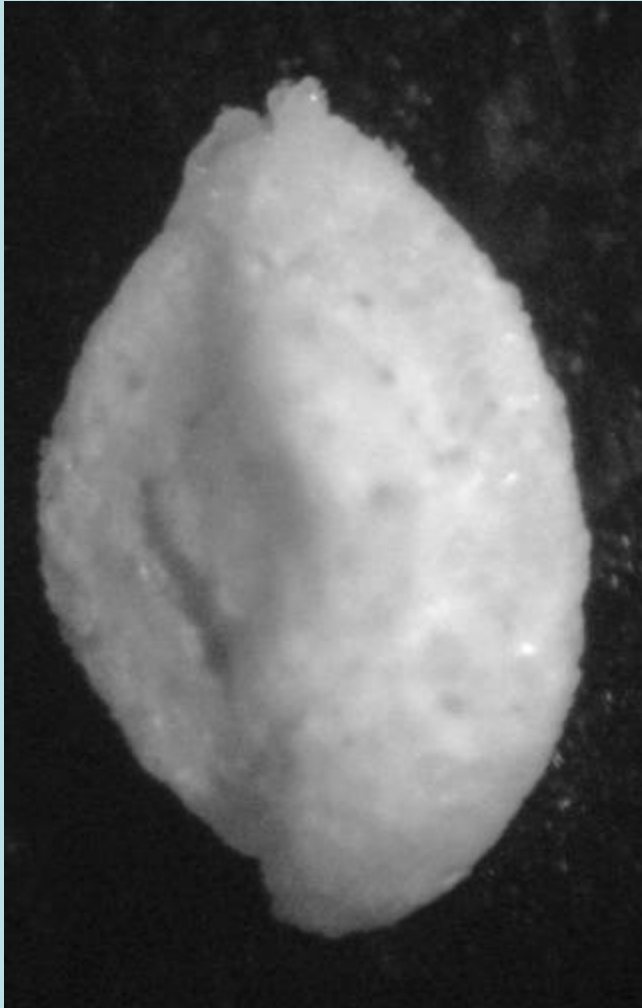
*Spirillina obconica*



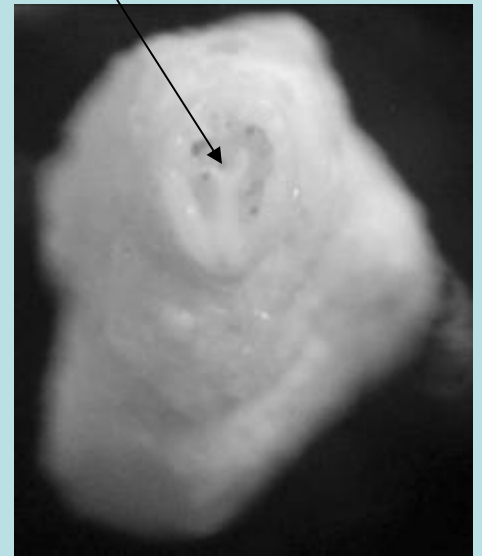


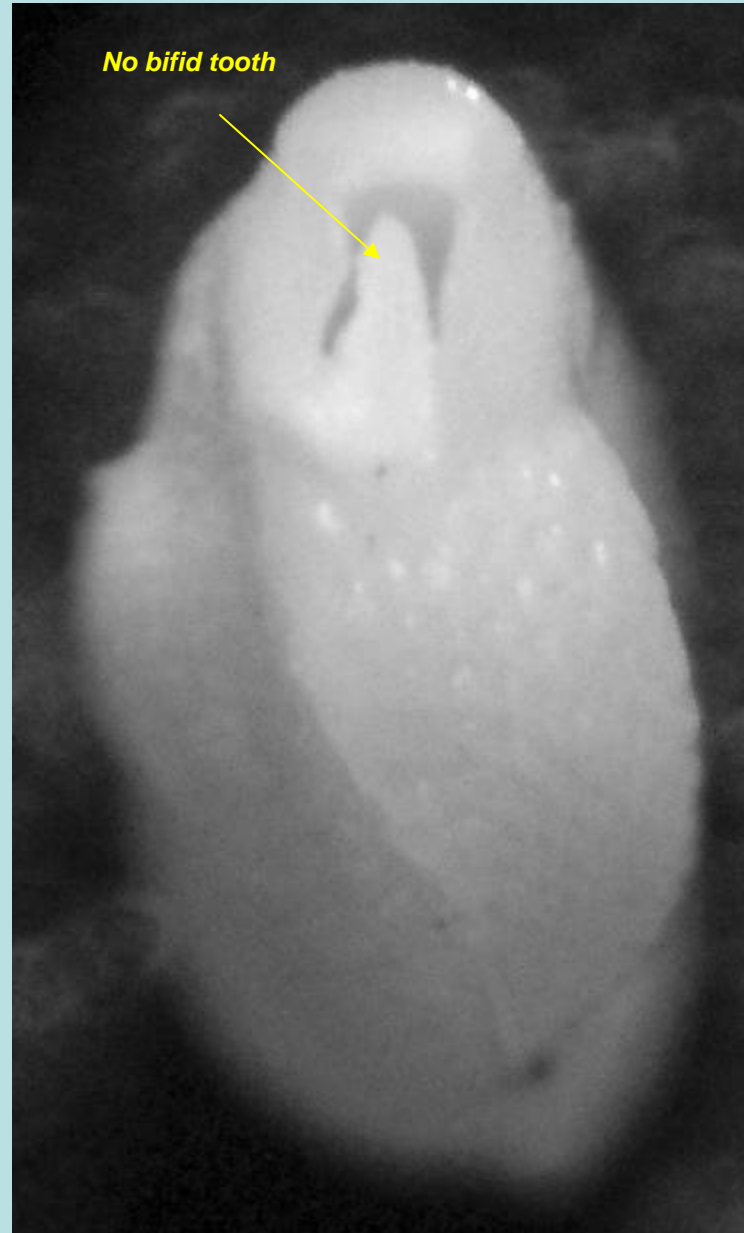
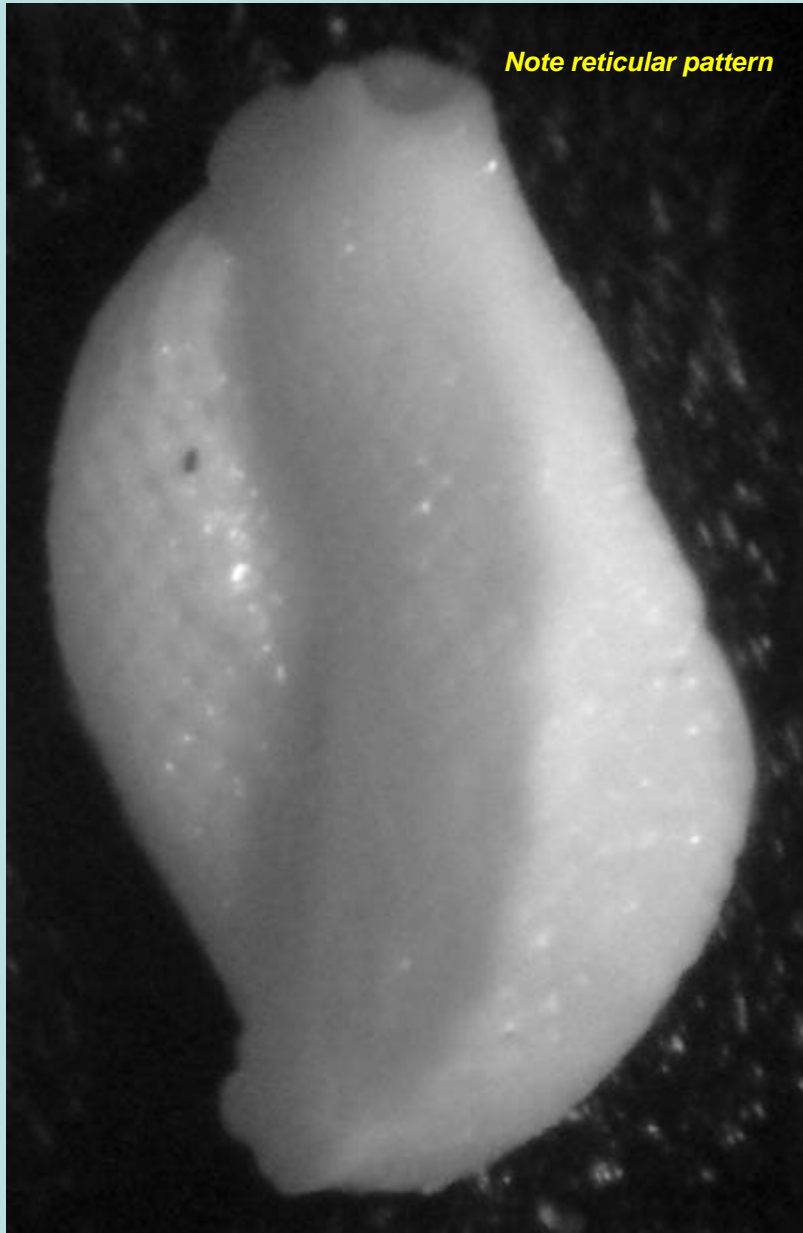
*More highly spired & smaller than  
Amphistegina*

*Asterigerina carinata*



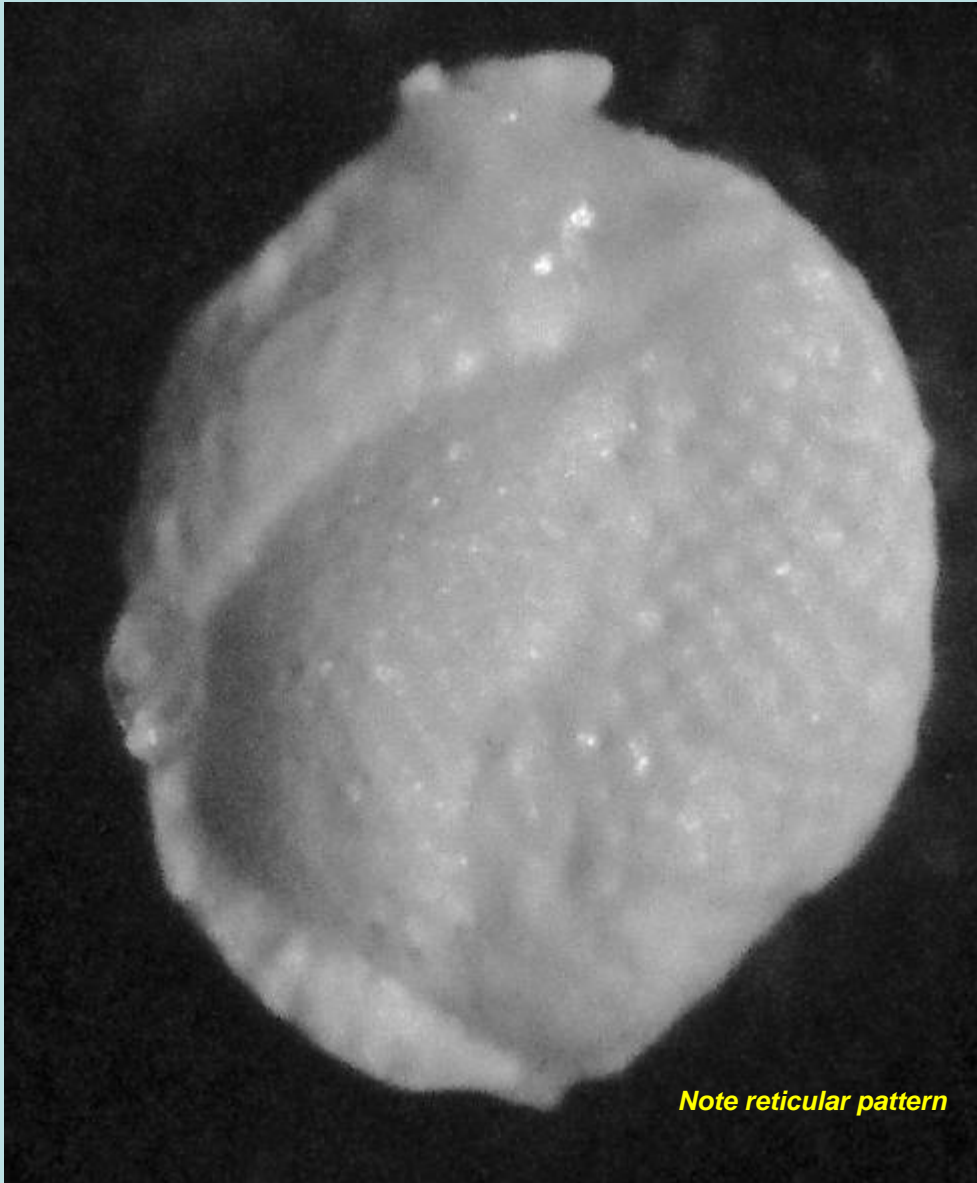
*Quinqueloculina*  
*bidentata*





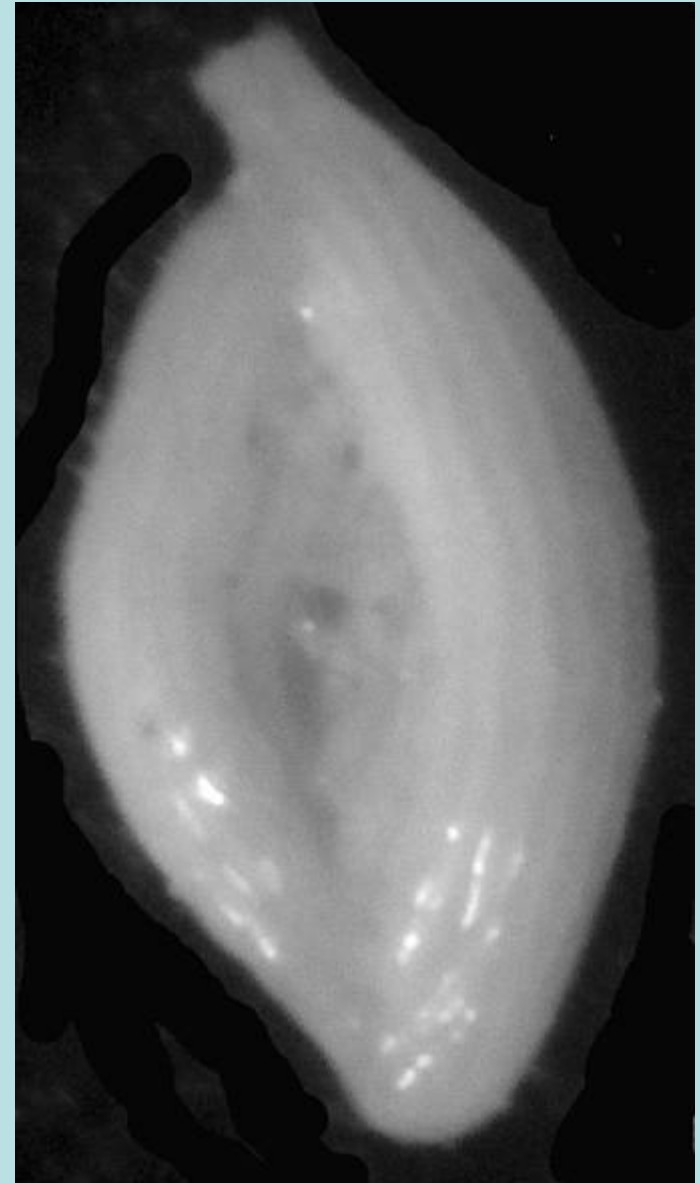
*Triloculina carinata*



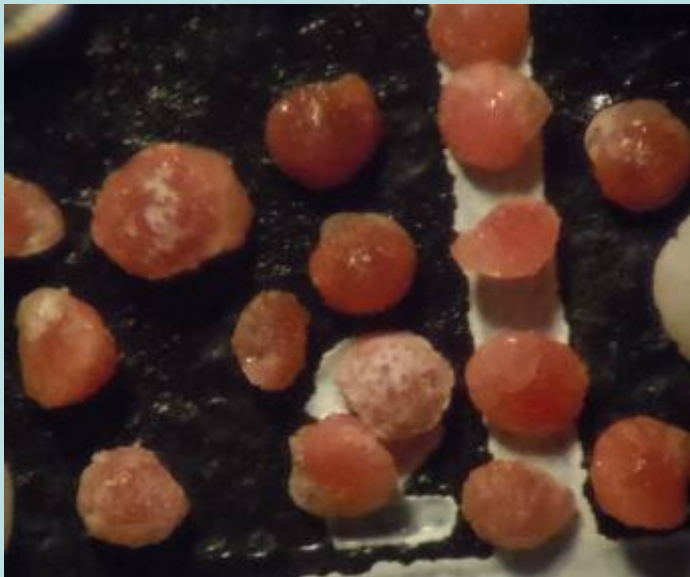
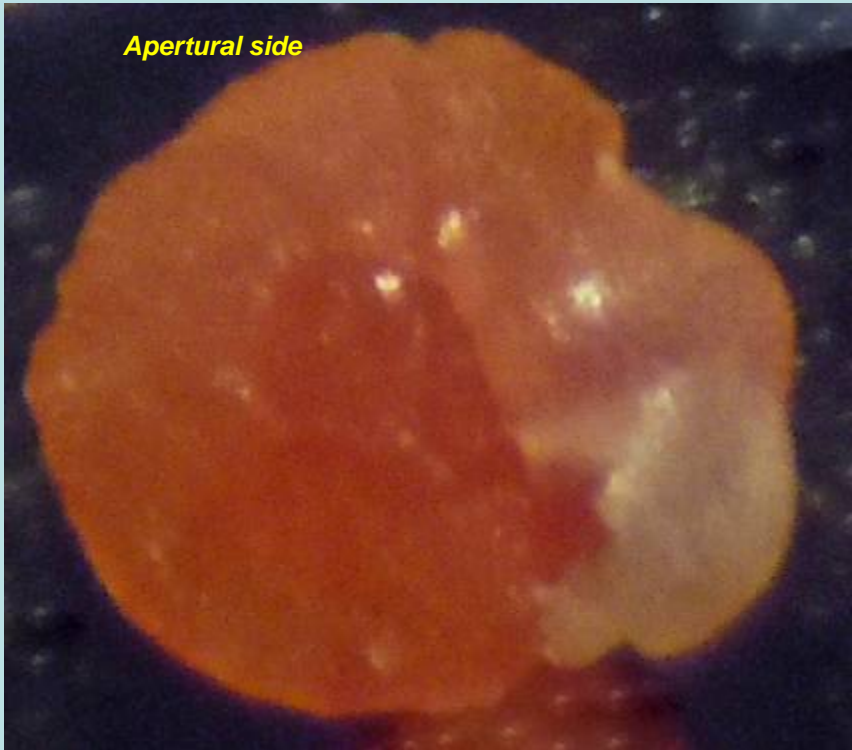


*Note reticular pattern*

***Triloculina bicarinata***



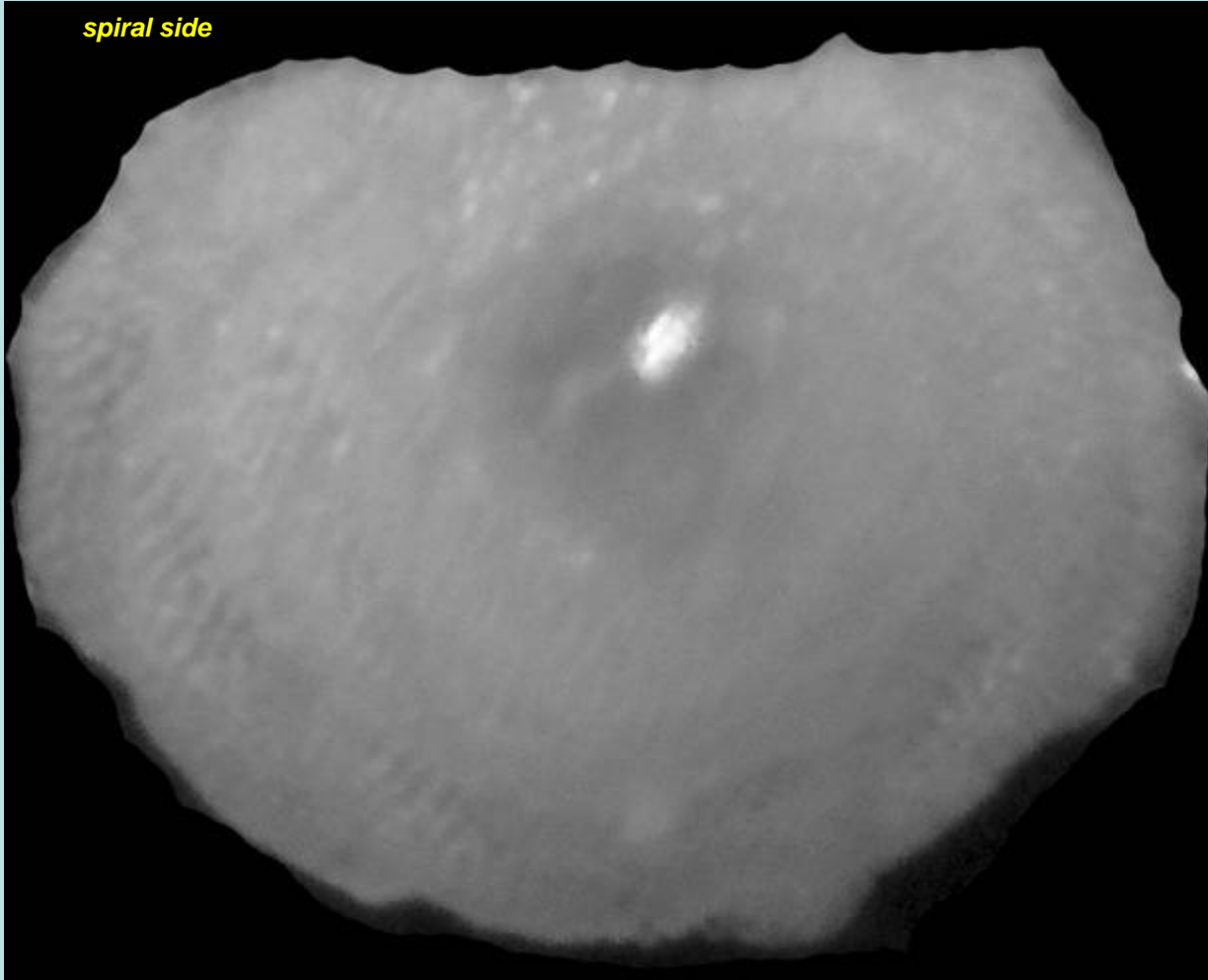
***Spiroloculina antillarum***



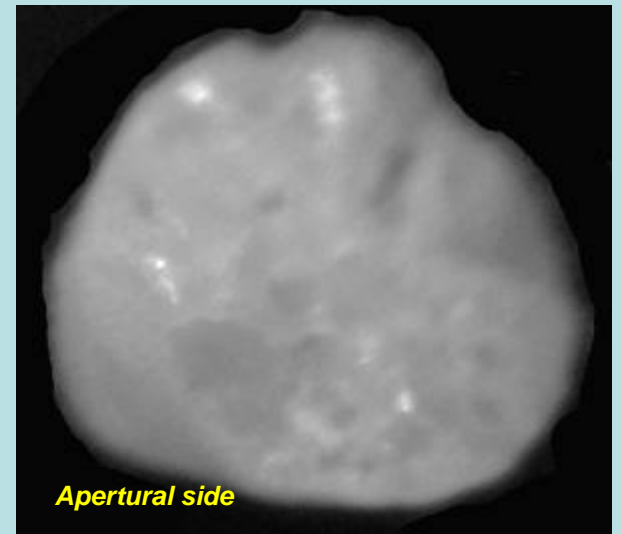
*Discorbis rosea*

Extremely common

*spiral side*

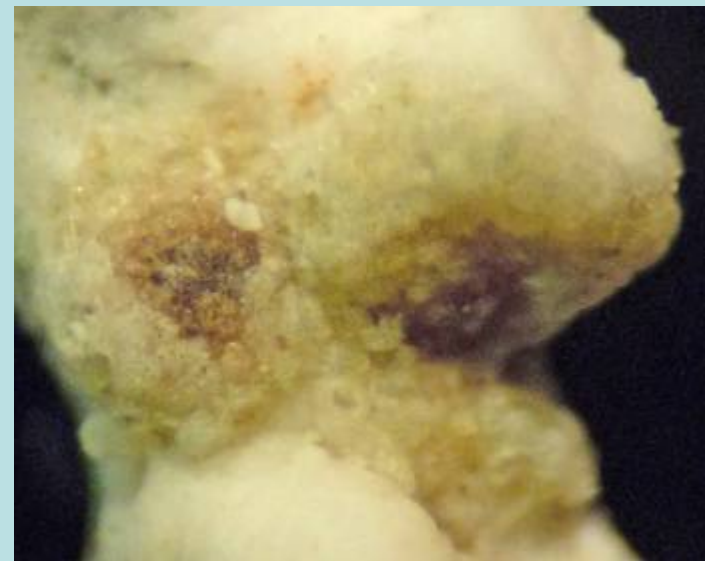
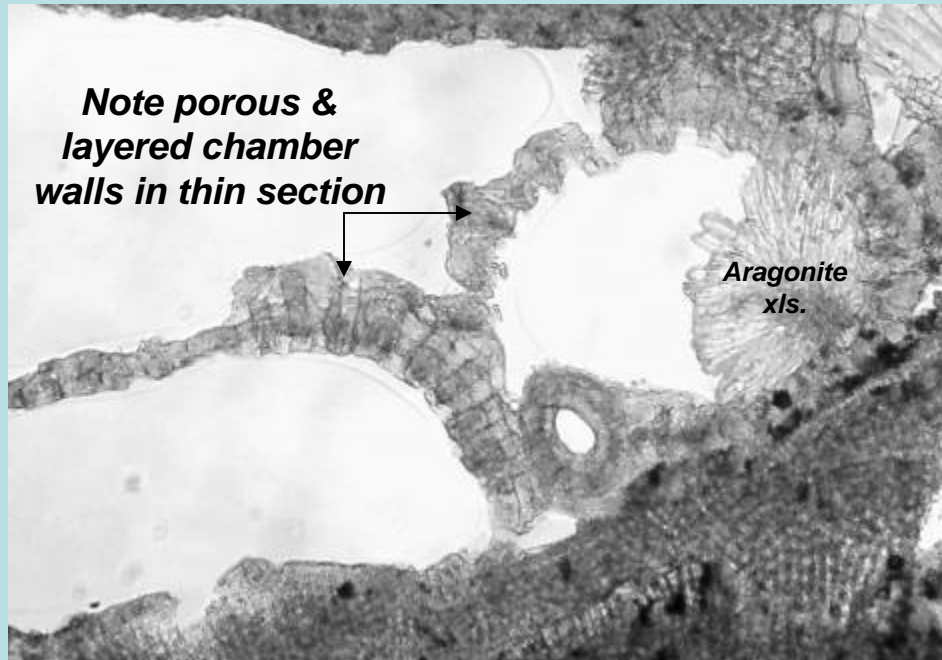
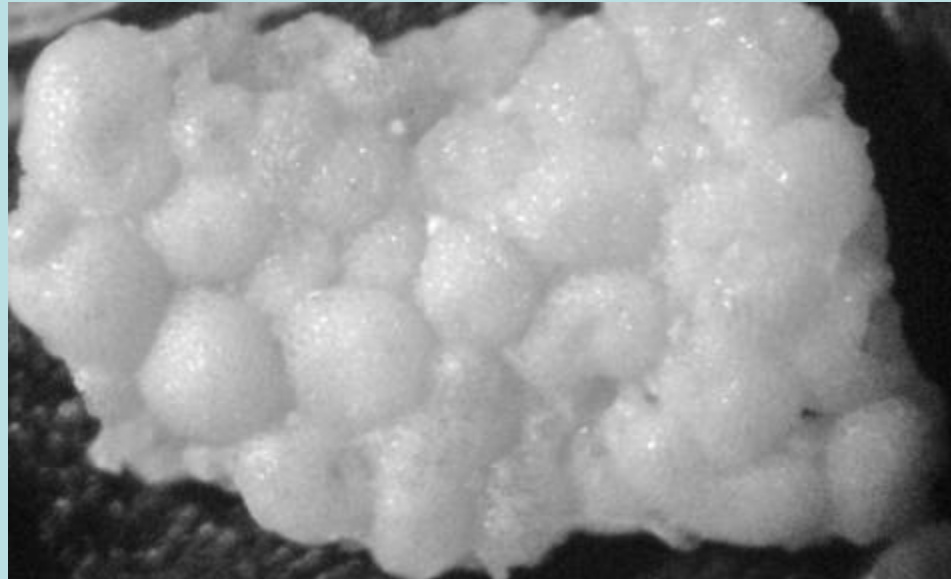
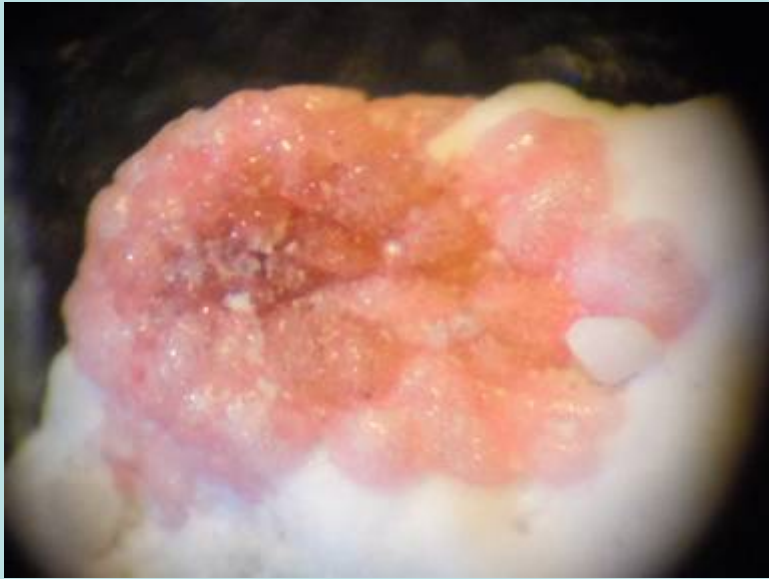


*Cymbaloporetta squamosa*



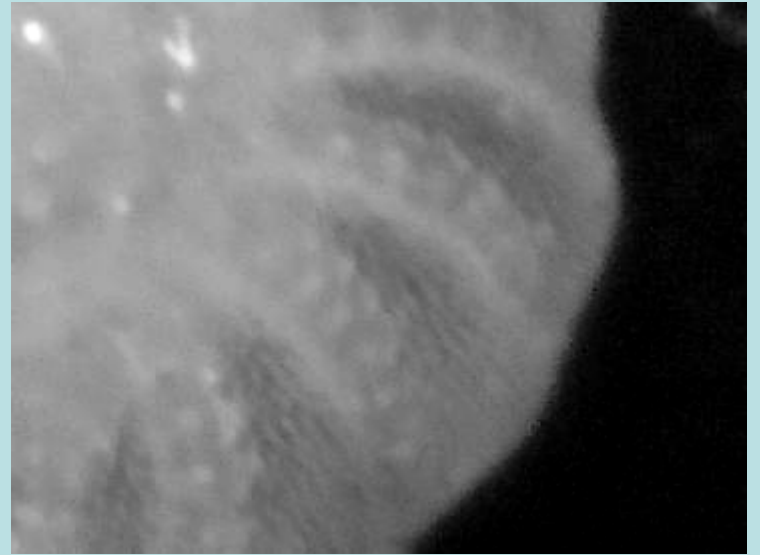
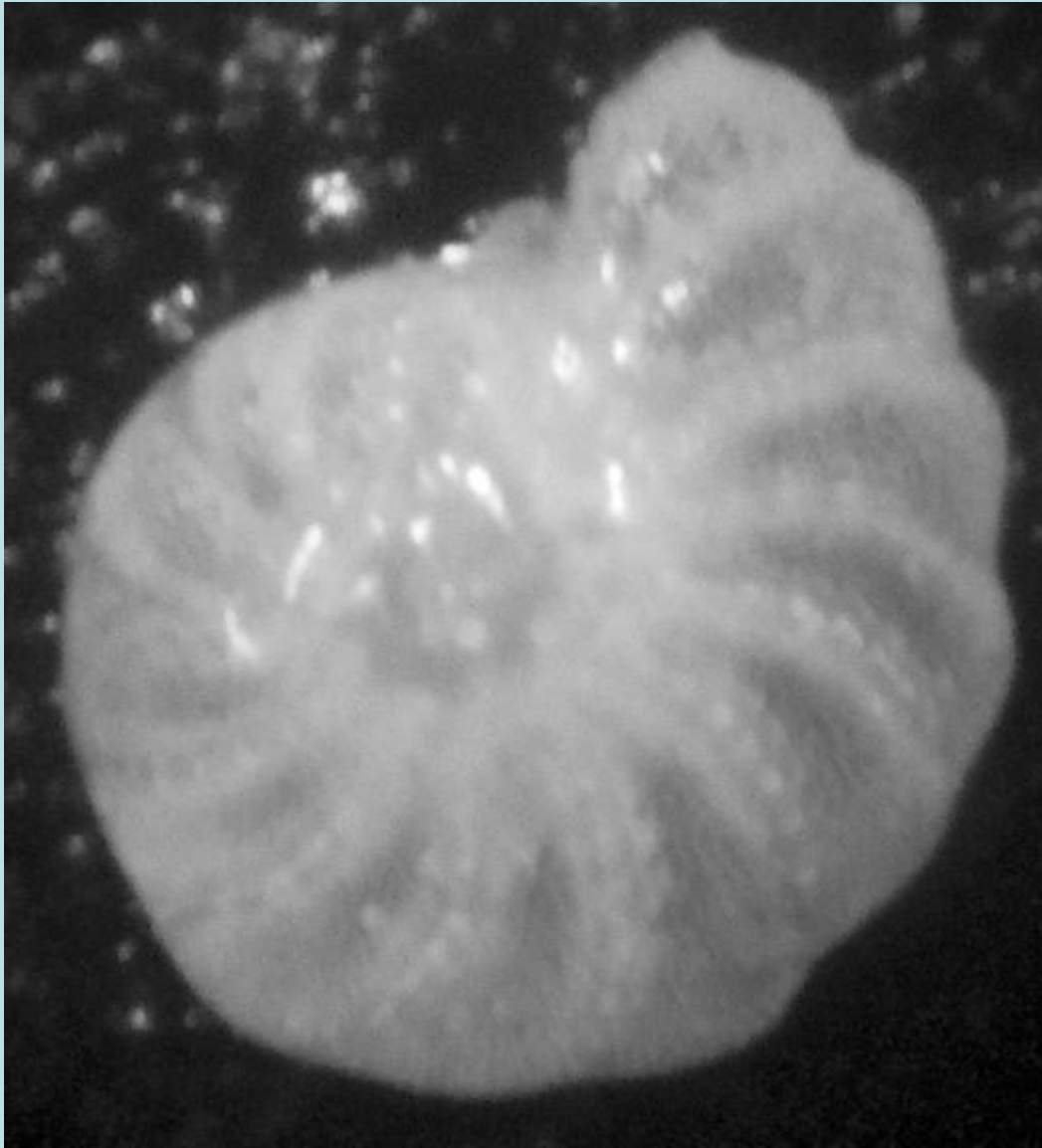
*Apertural side*





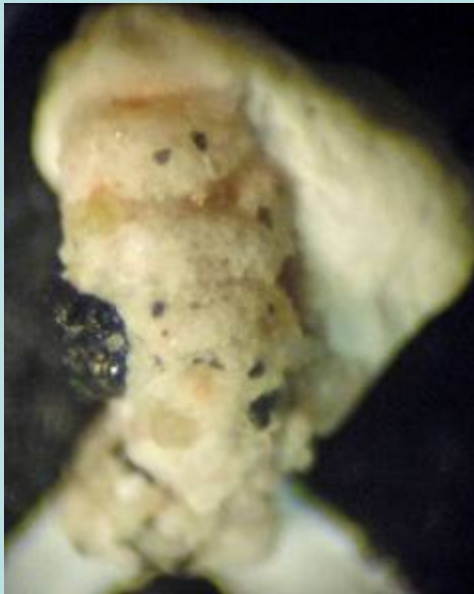
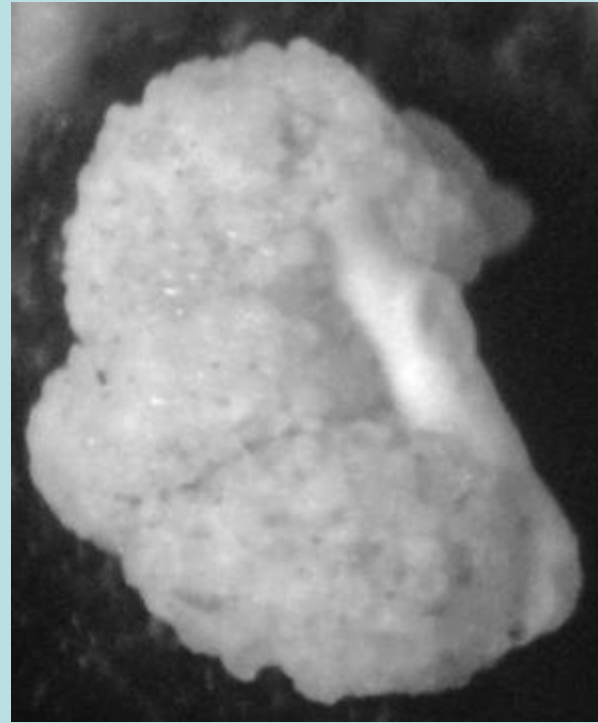
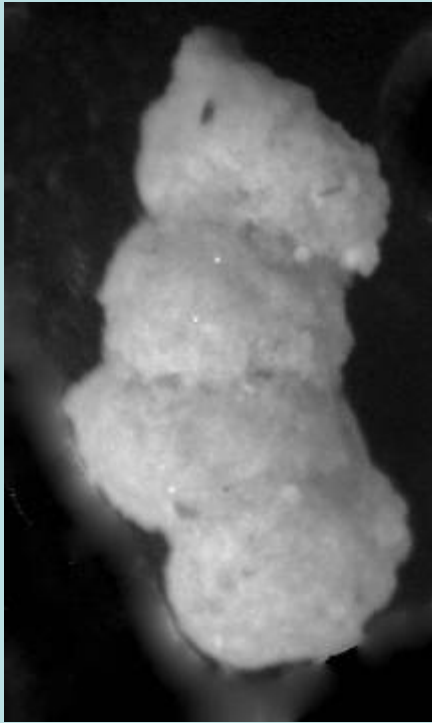
**Planorbulina acervula**

**Covers most branches of**  
**Lithothamnion red coralline algae**  
**very prolific**



***Elphidium advenum***

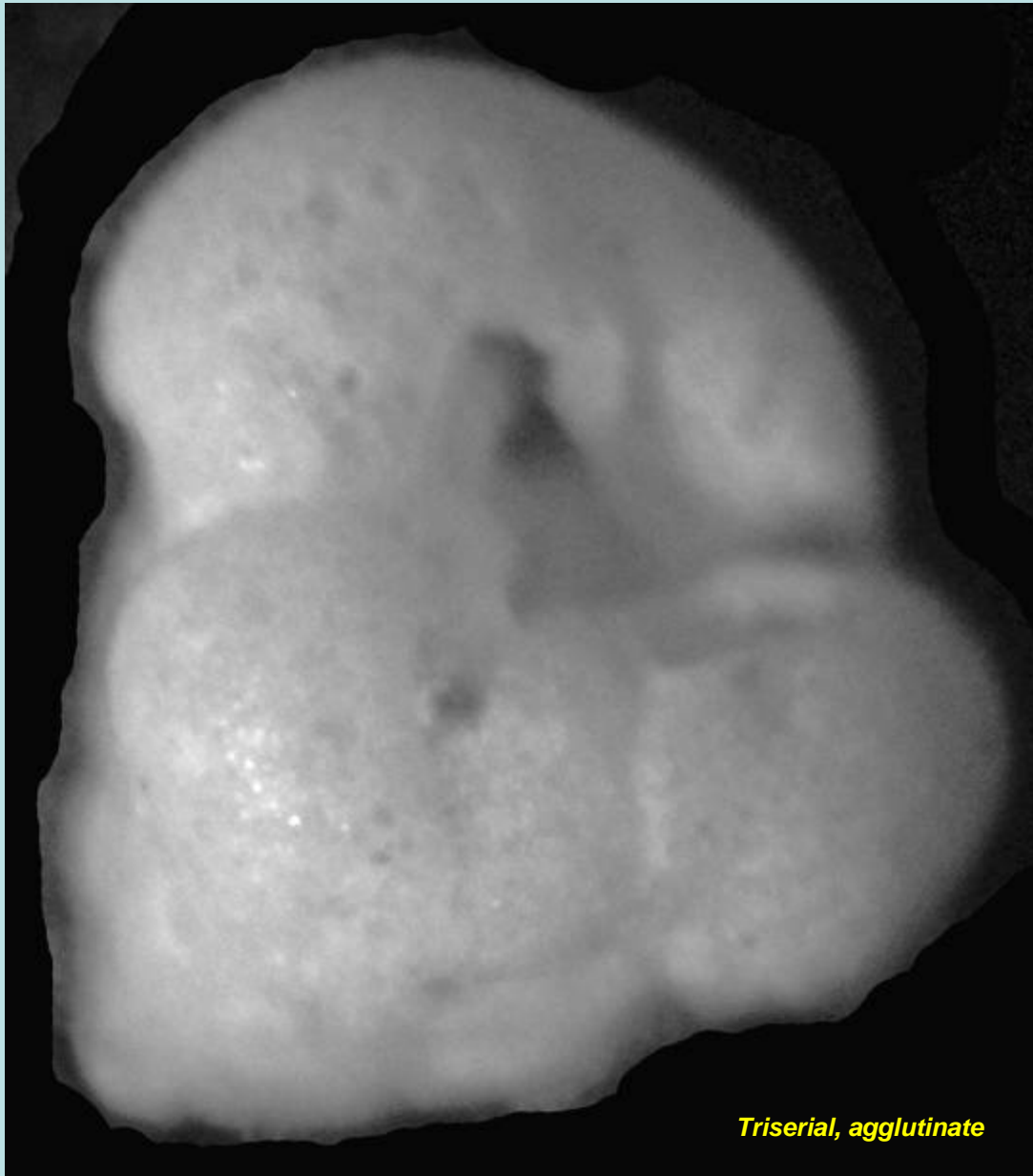
**Planispiral with retral processes**



*Placopsilina cf. bradyi*

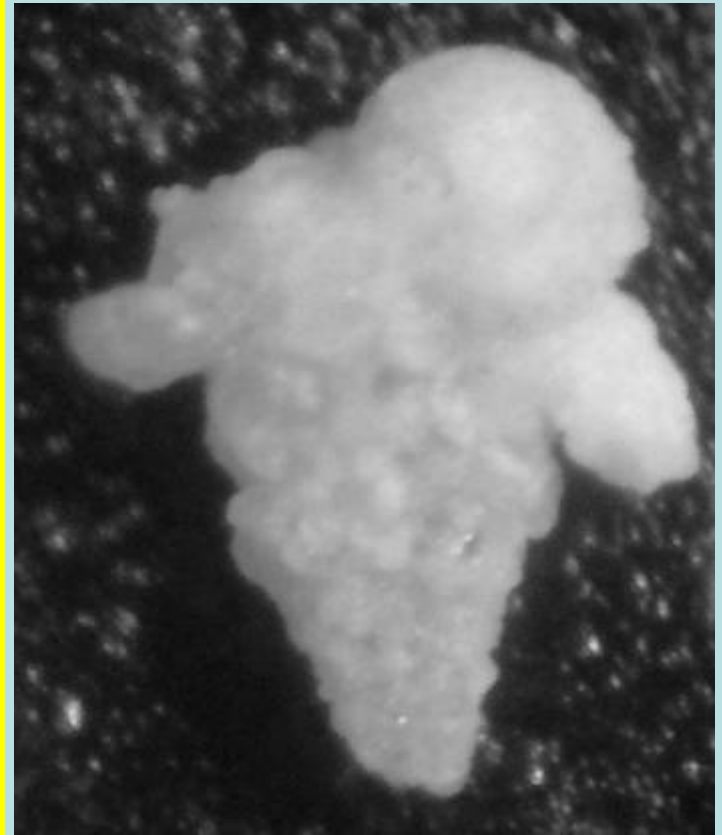
*an attached, agglutinated foram*





*Triserial, agglutinate*

*Valvulina oviedoiana*



*Textularia sp.*

A biserial form of  
agglutinated foram w/ 2 larger  
sand grains aberrantly 'glued'  
on the sides