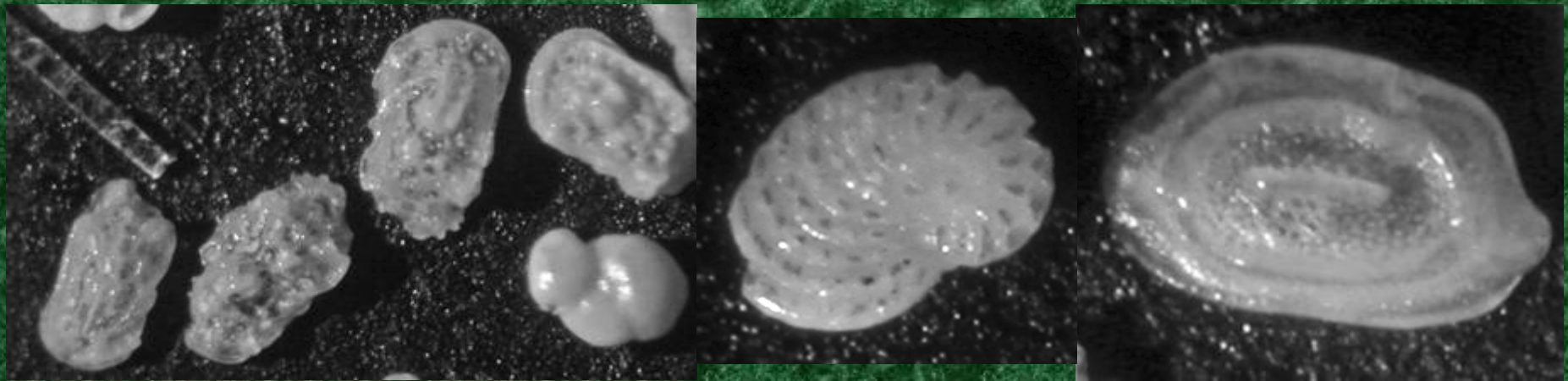


***FORAMINIFERA &
OSTRACODA OF N.E.
BERMUDA (ST. GEORGES
PAR.): LAGOONAL FACIES***

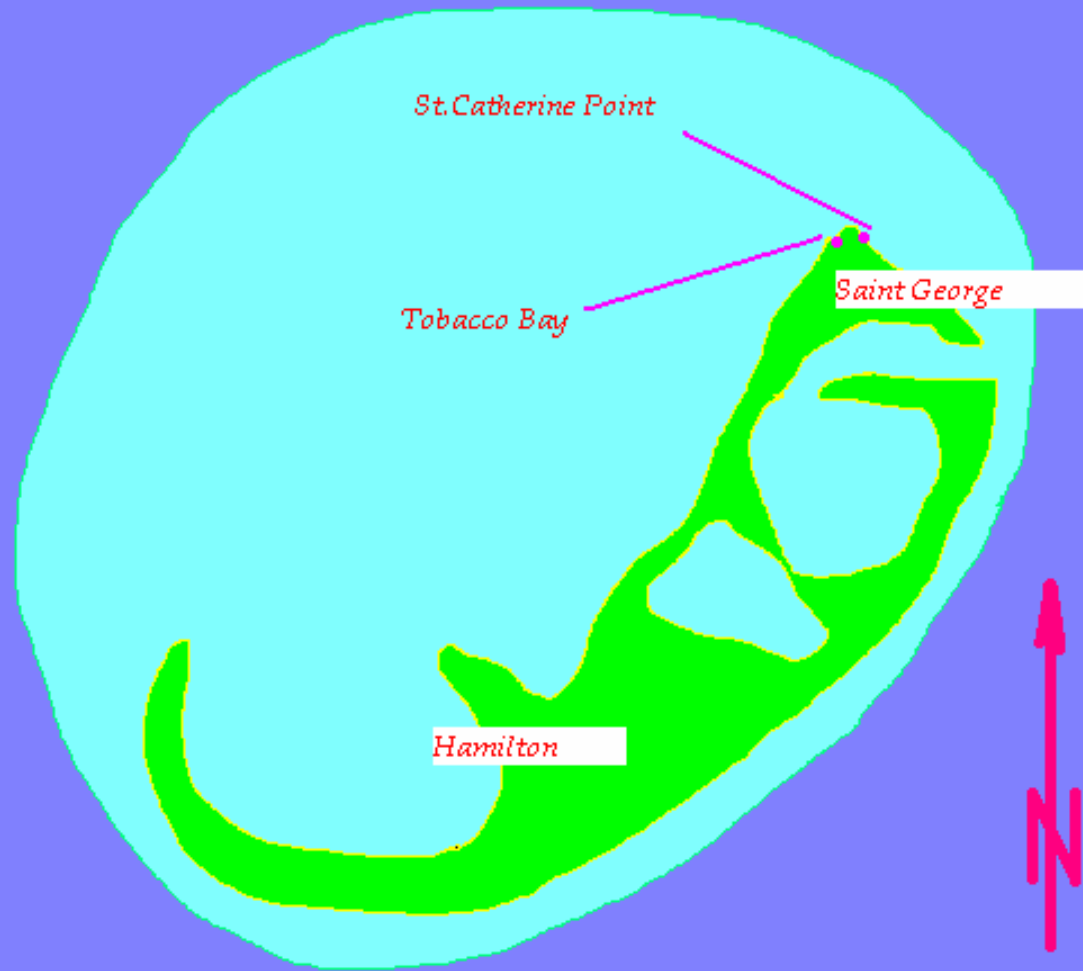


John E.B. Baker, Mikrogeo.com

Mi rogeo



mikrogeo.com



BERMUDA

-650 miles ESE of Cape Hatteras



Image © 2007 DigitalGlobe

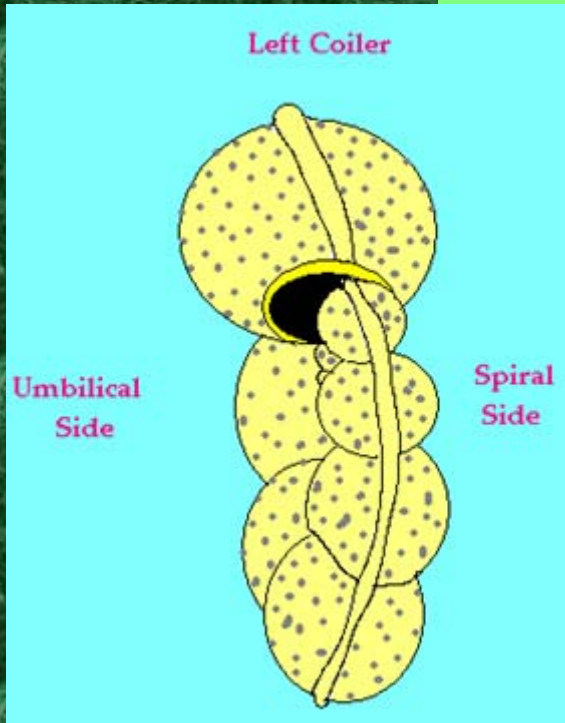
© 2005 Google

Pointer 32°23'19.28" N 64°40'35.03" W elev 85 ft Streaming ||||| 100% Eye alt 2939 ft

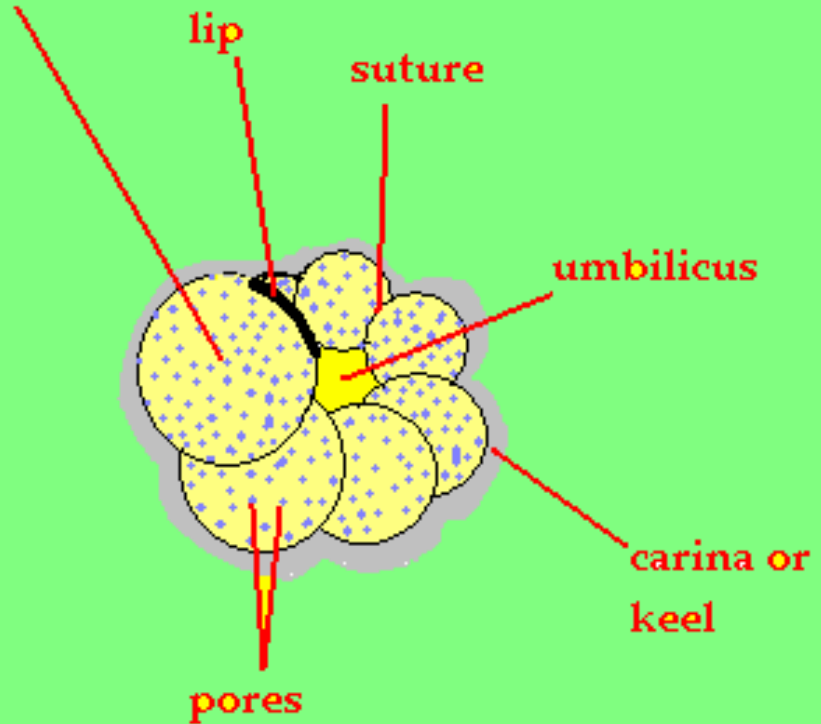
Foraminifera

Basic 'Foram' Anatomy

chamber



aperture &

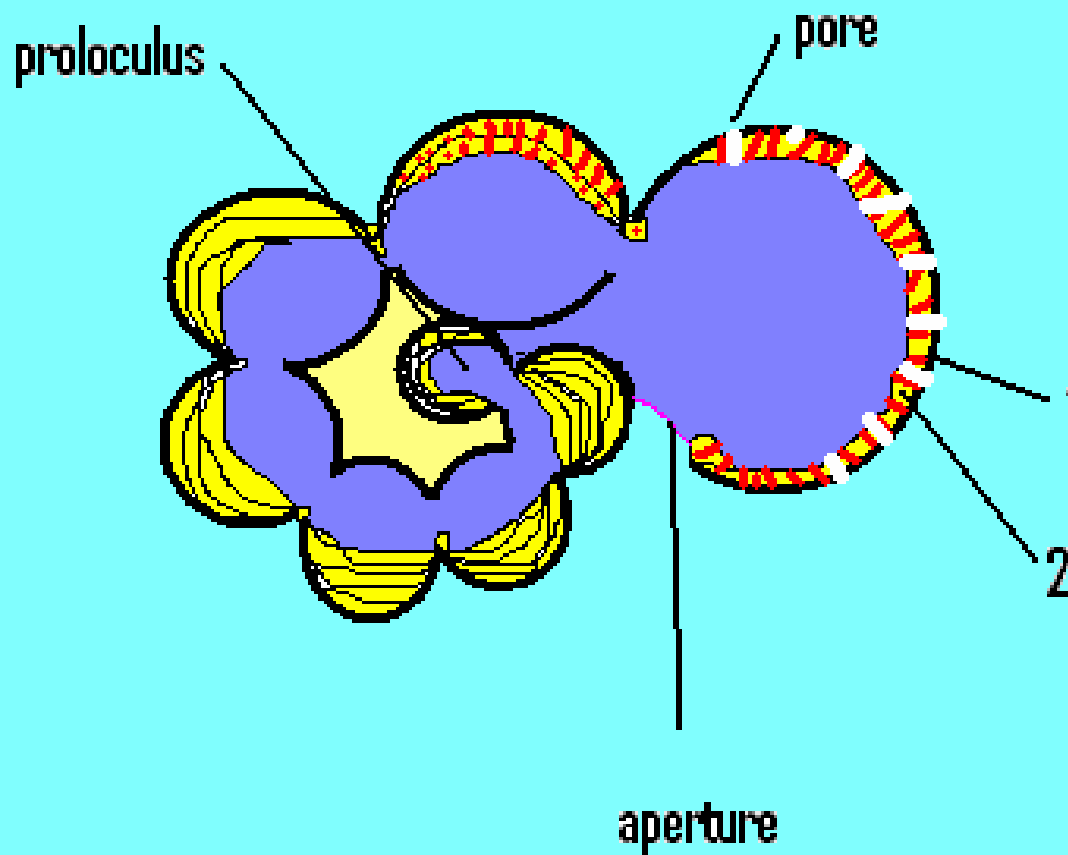


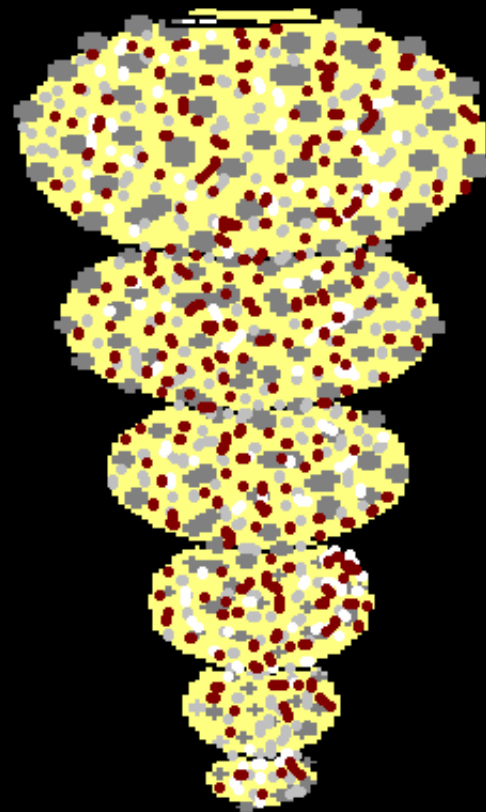
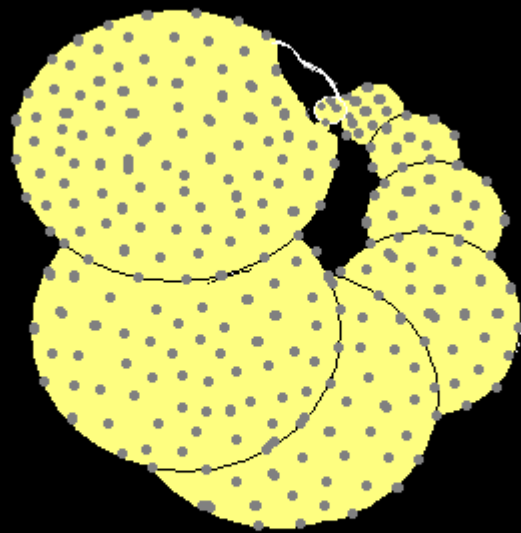
Test Composition & Classification

- **Organic-walled** (protein/mucopolysaccharide)-*Allogromia*
- **Agglutinated** (particles cemented by CaCO_3)-Textulariids
- **Secreted**- 3 types: 1) **Microgranular**-Fusuliniids
2) **Porcelaneous** (imperforate)-Miliolinnids
3) **Hyaline**- new layer added to test with each new chamber-Globigerinnids & Rotaliids

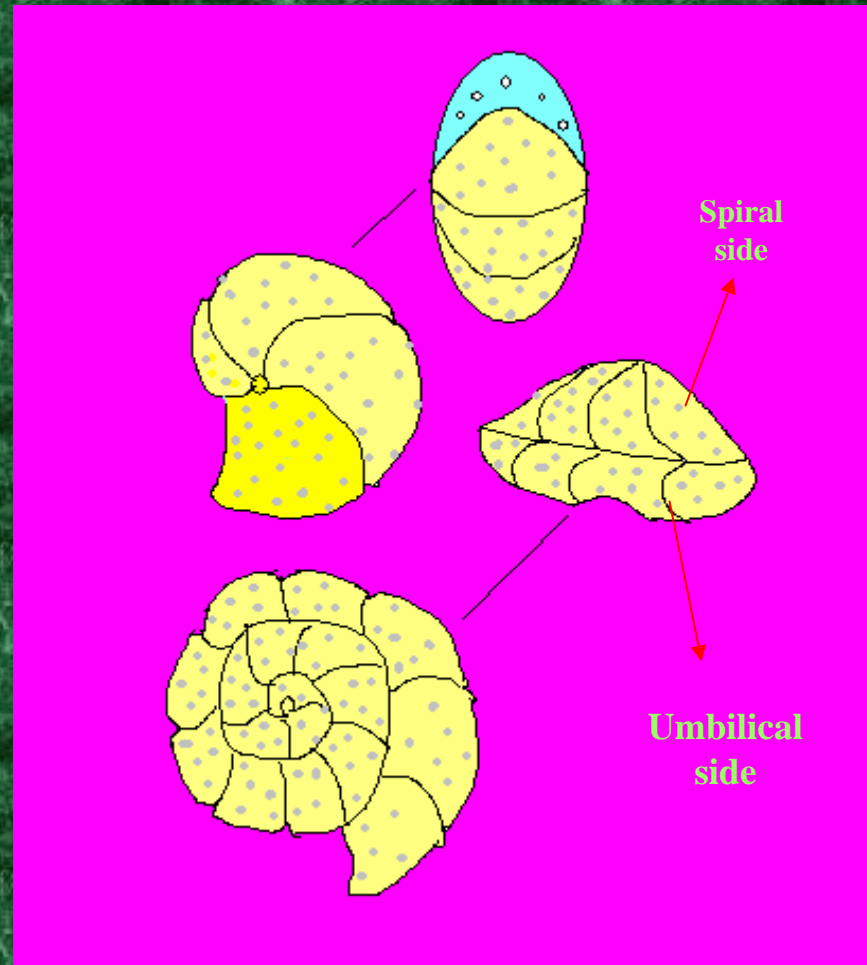


Hyaline perforate: lamellar-radial CaCO_3 xls

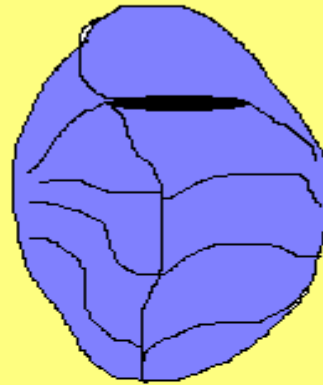




Forams: Planispiral v. Trochospiral, Evolute v. Involute



Apertural View

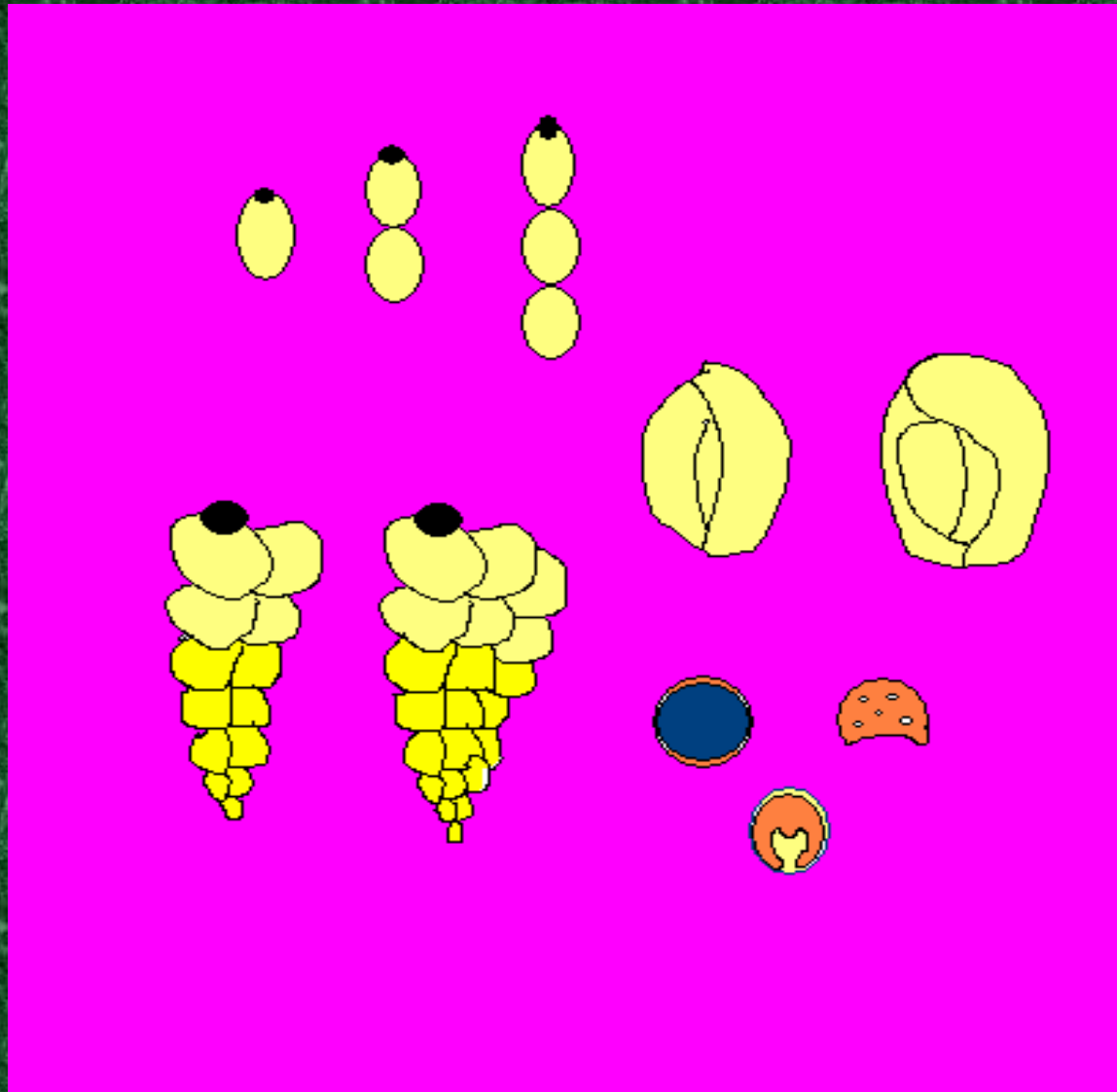


Biconvex

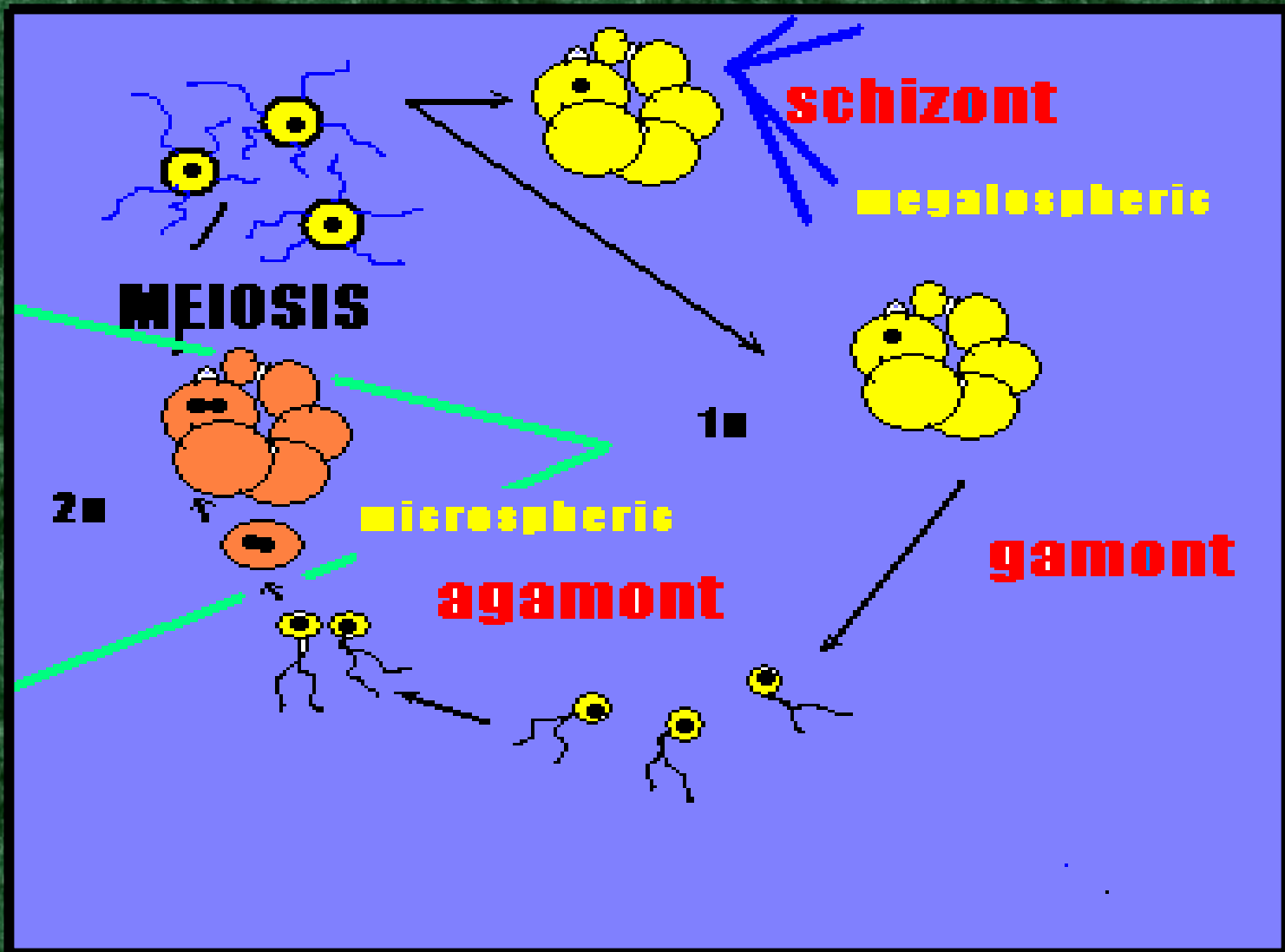


Planoconvex

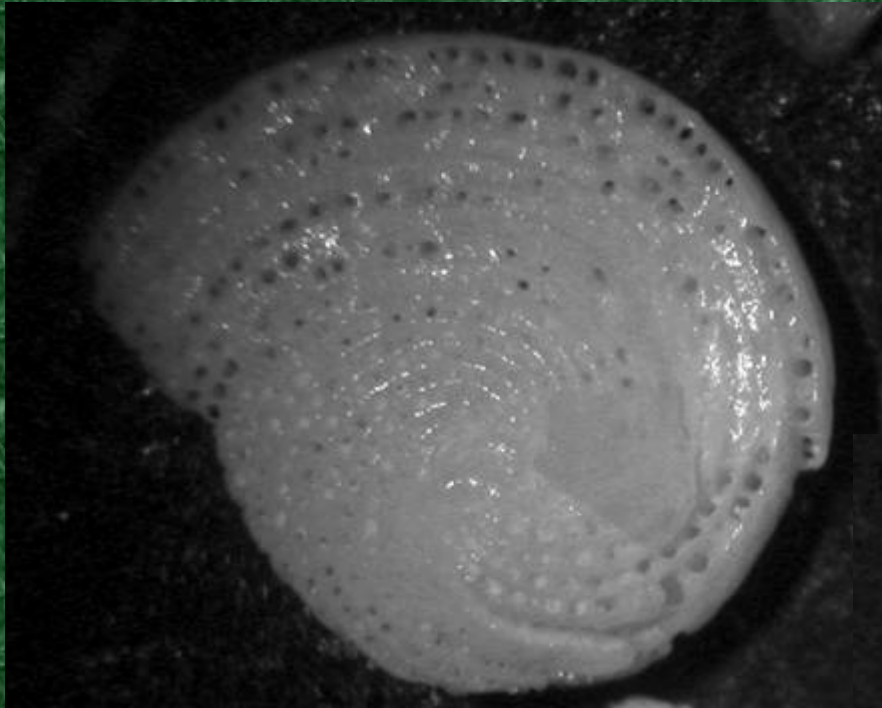
Chambers: Uniserial, Biserial, Triserial; Unilocular, Bilocular, Trilocular; Leptospiral. Apertures: Cribriform, Toothed, Lipped



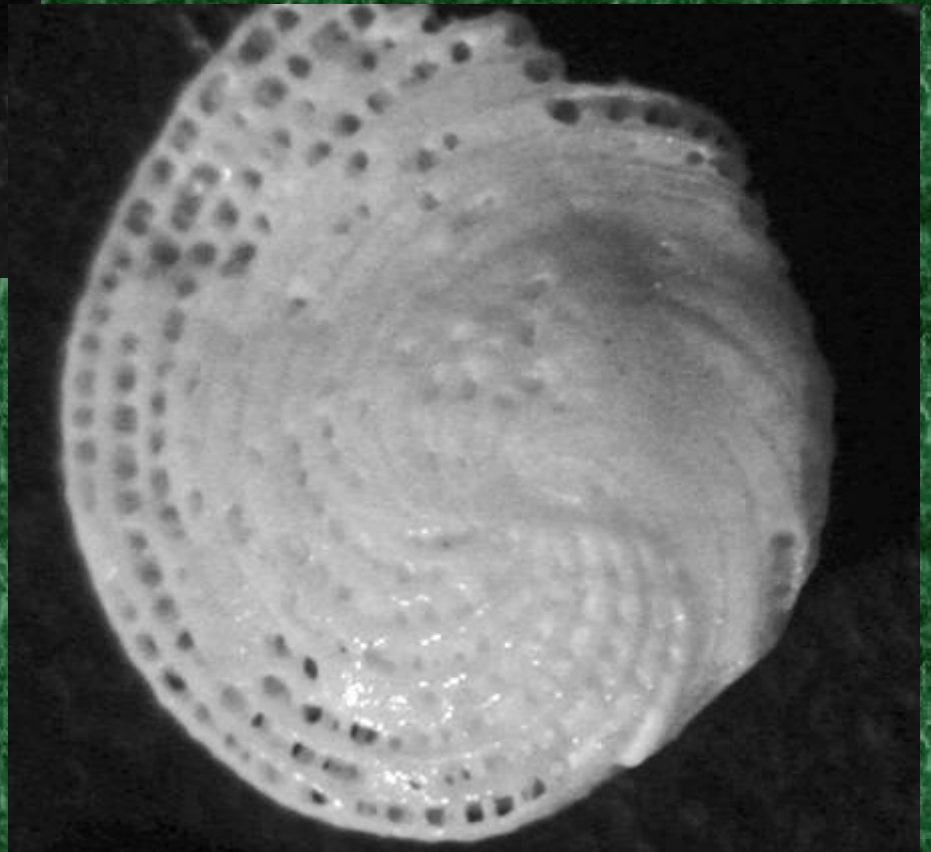
Simple Life Cycle of FORAMINIFERA

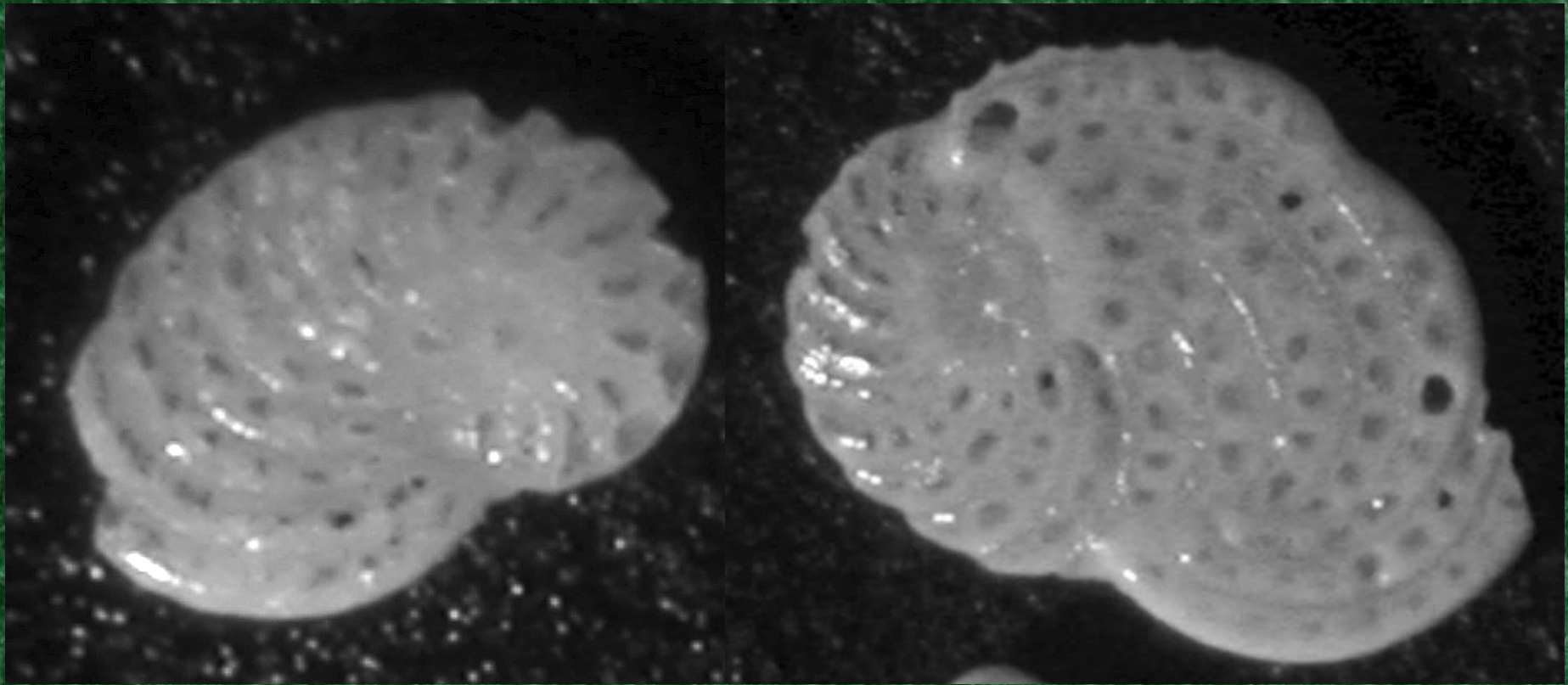


***Large Miliolinnids
with Symbiotic
Zooxanthellae***



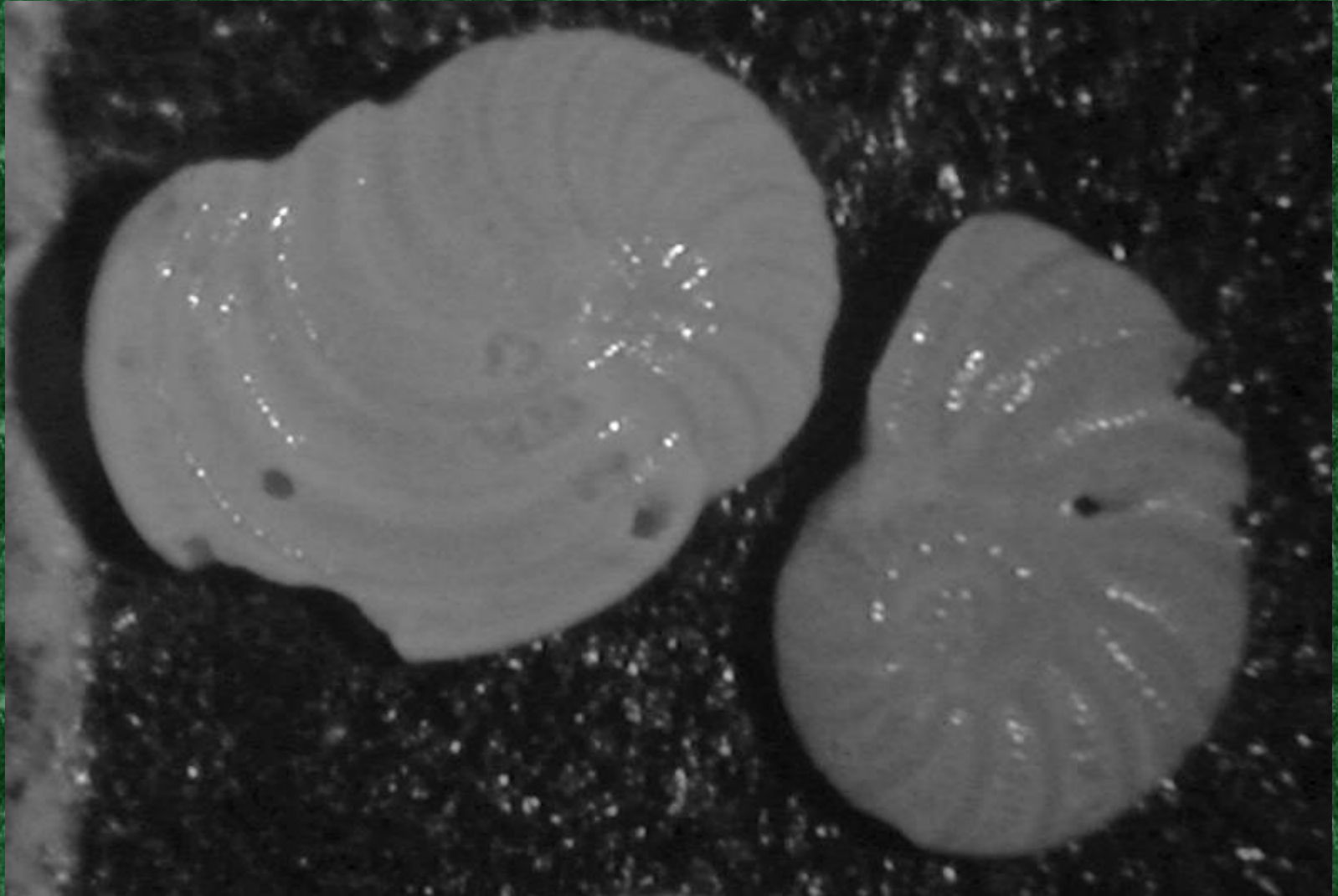
Archaia angulatus

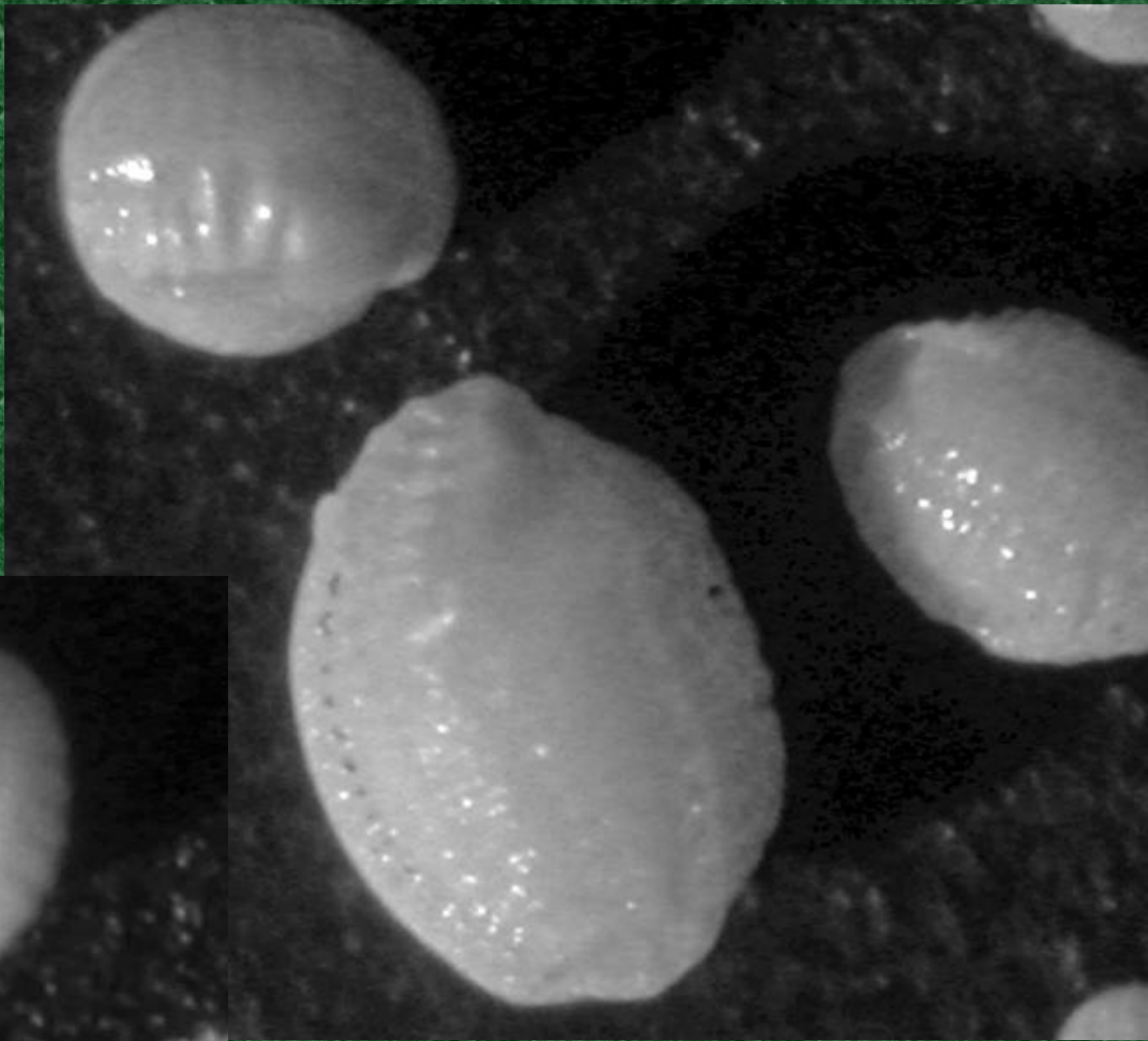




Cyclorbiculina compressa

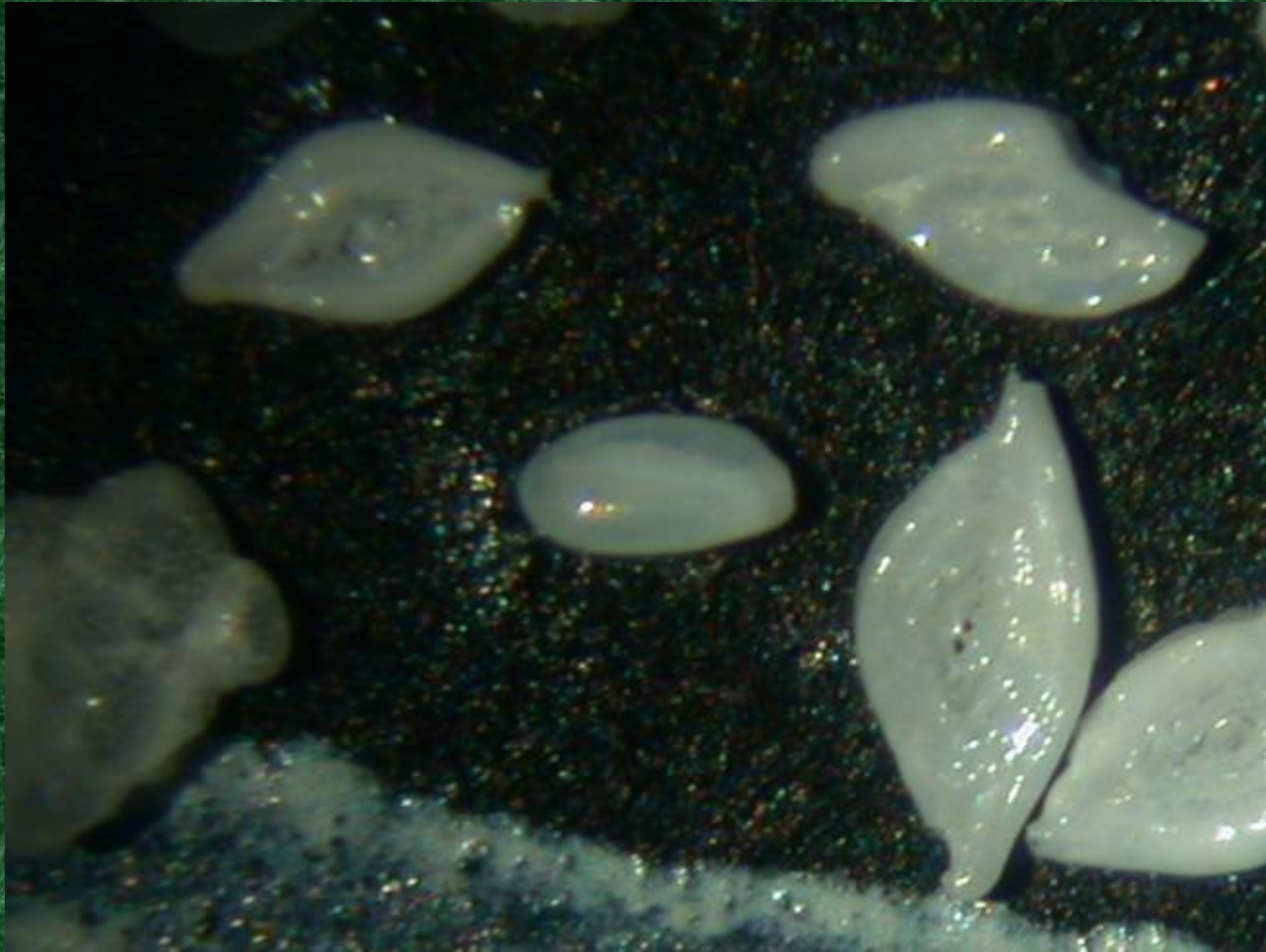
Laevipeneroplis proteus* & *Peneroplis pertusus



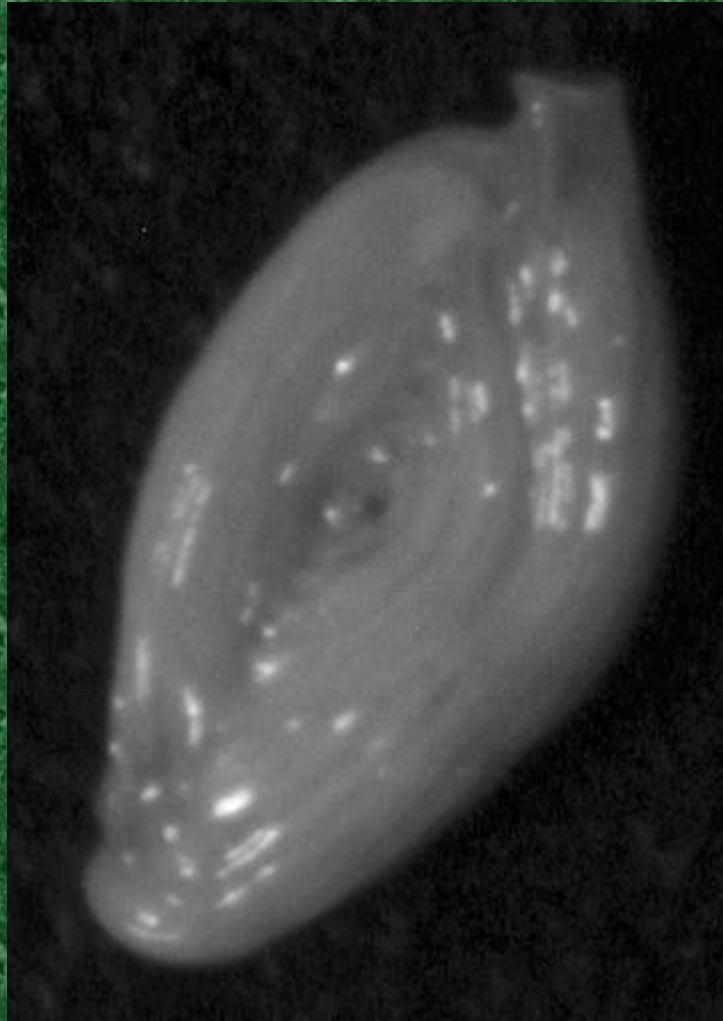


Borealis pulchra

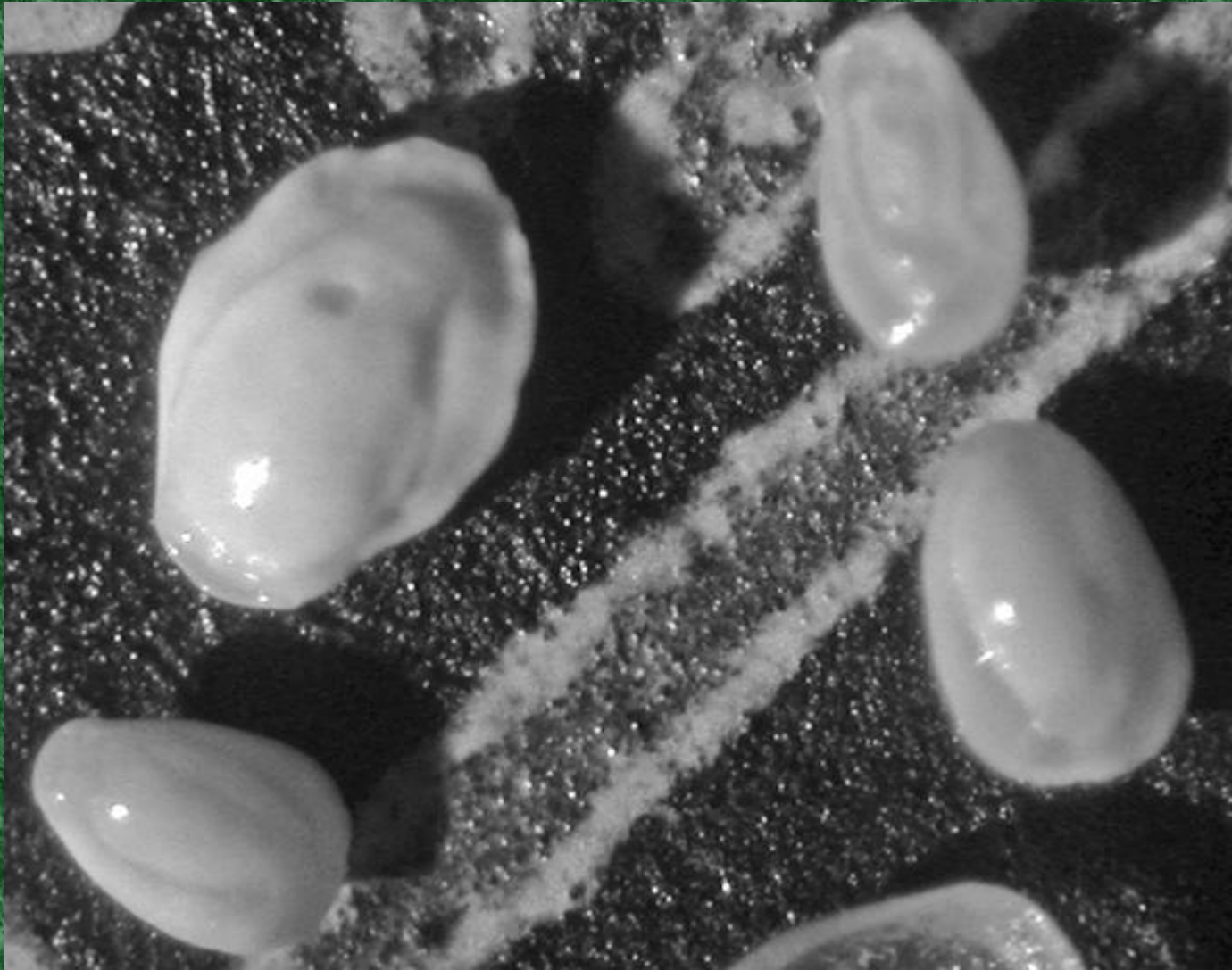
***Some of the many porcelaneous
Miliolonids (excluding most
Triloculina & Quinqueloculina)***



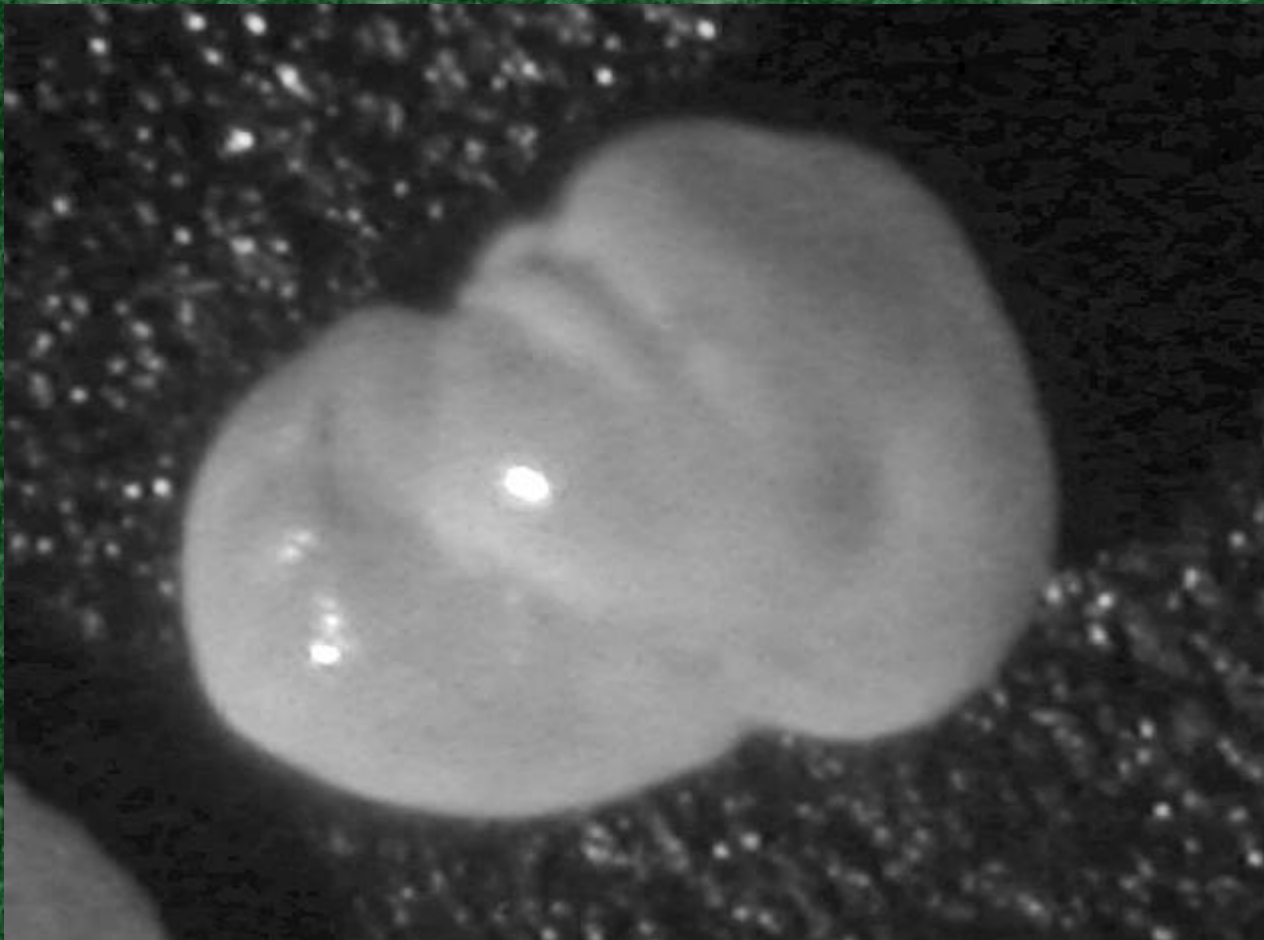
Spiroloculina angulata



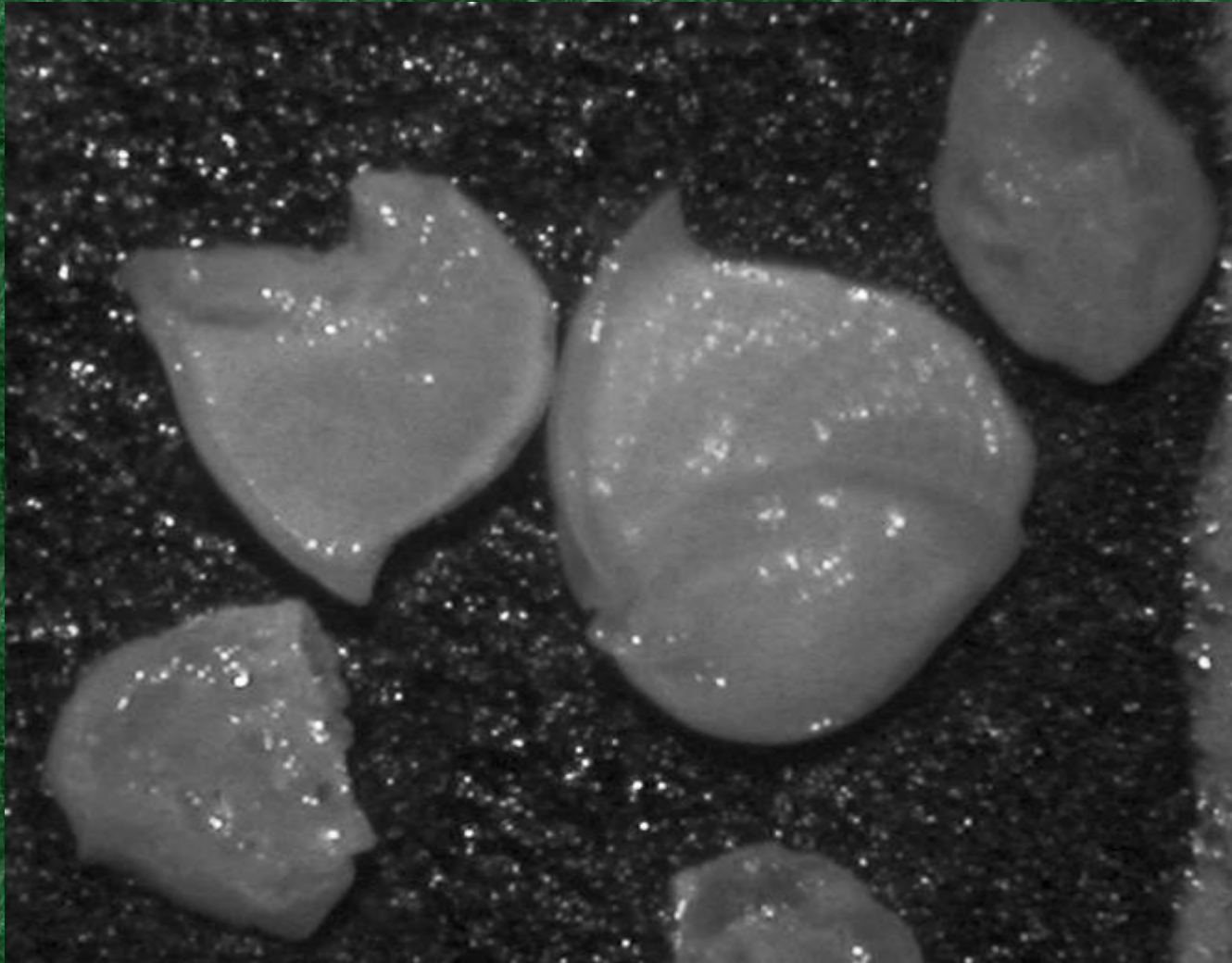
Spiroloculina angulata



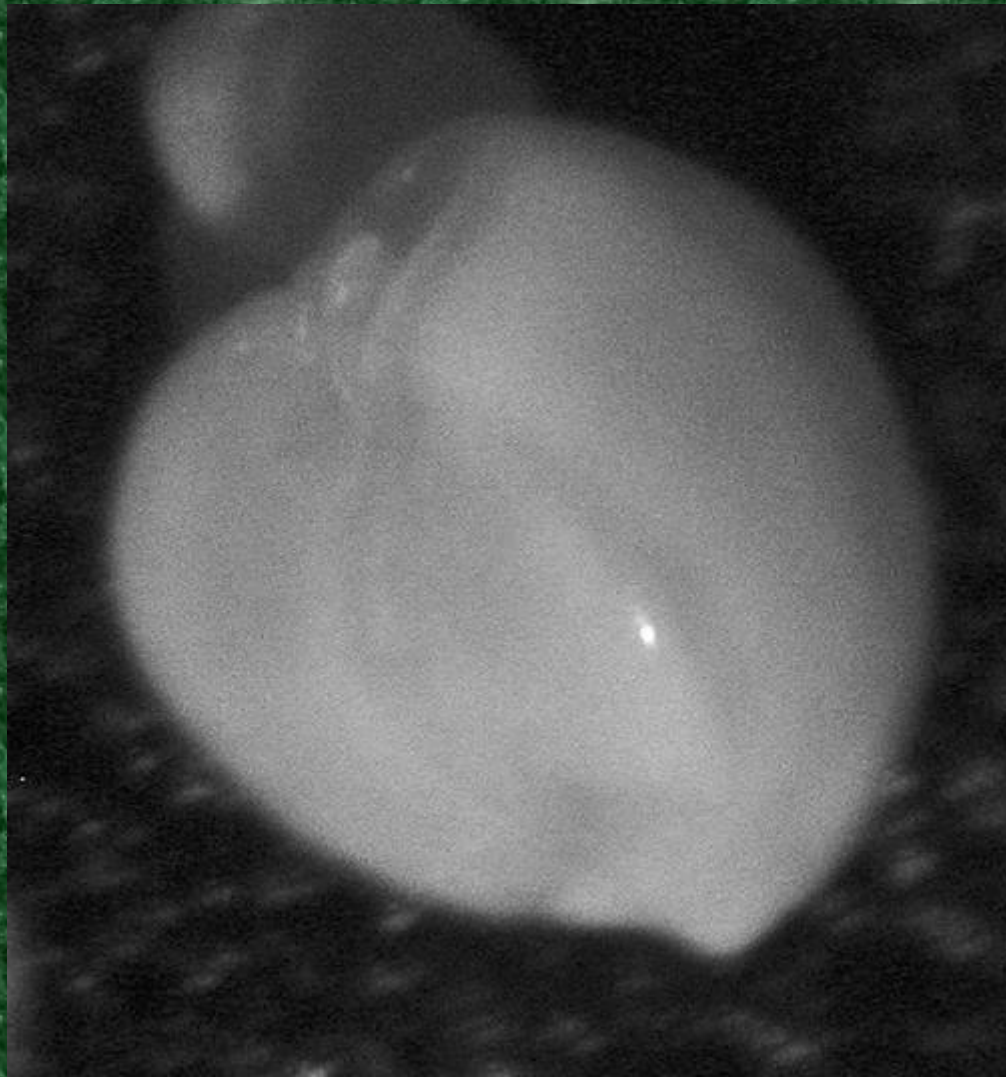
Pyrgo elongata



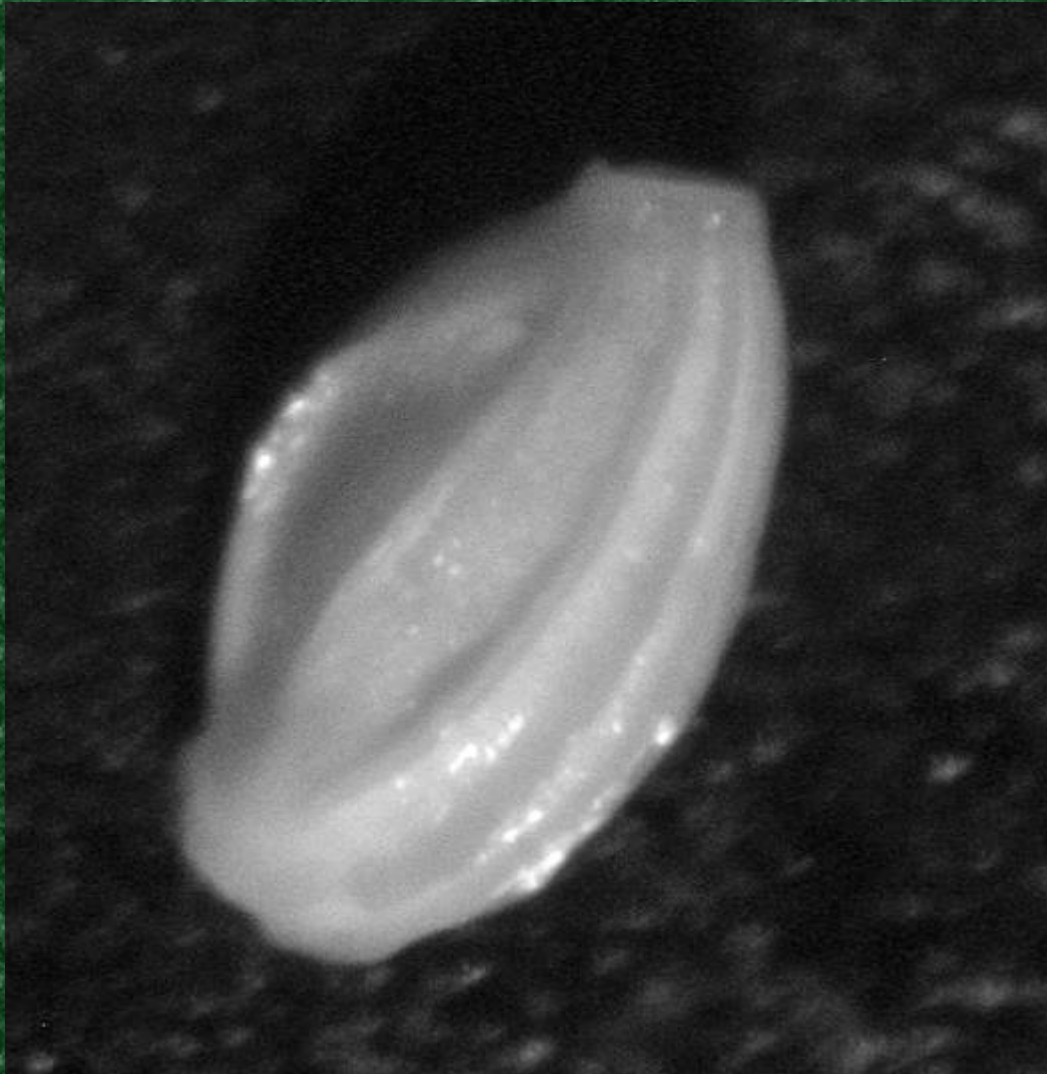
Miliolinella labiosa



Vertebralina sp.



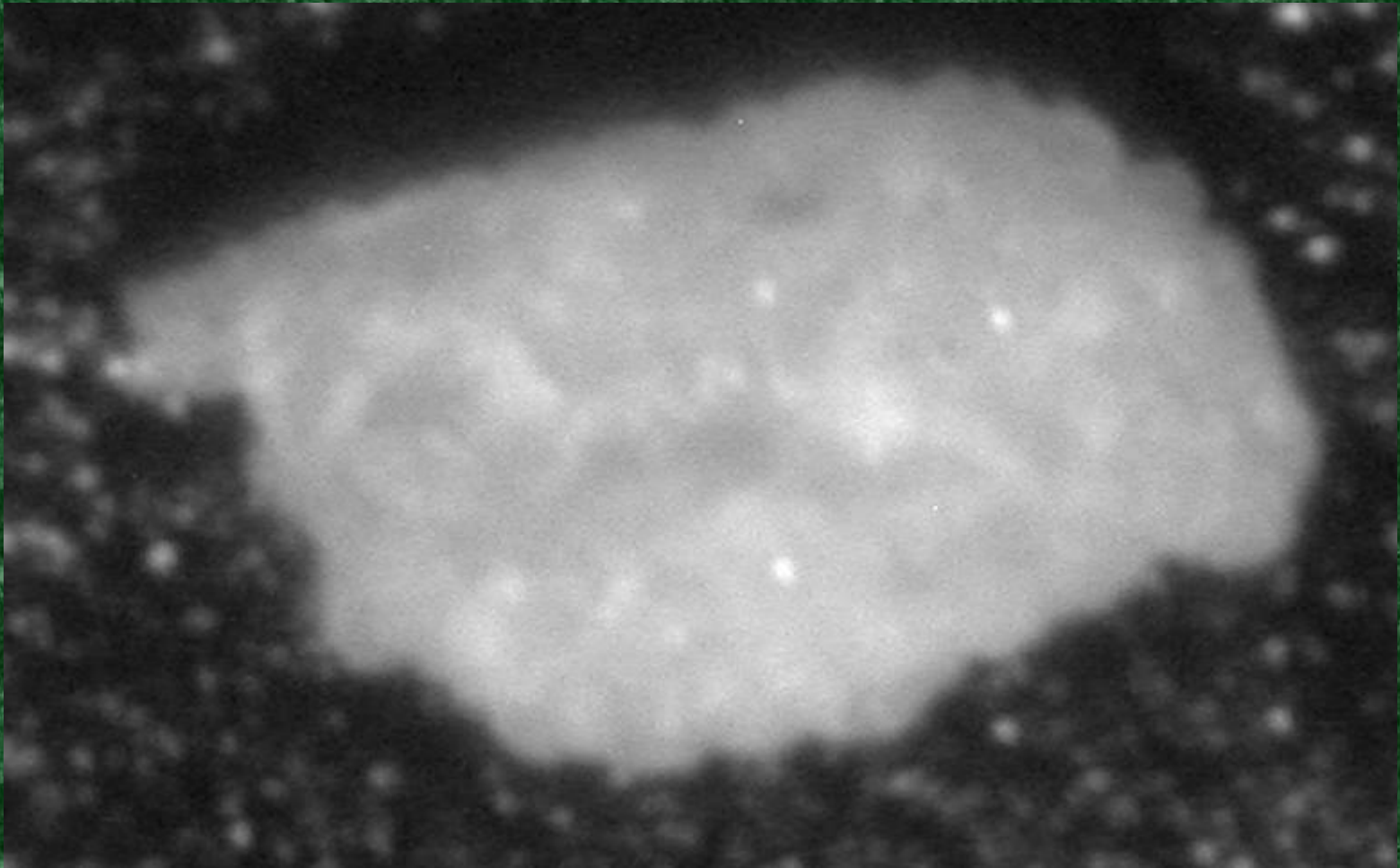
Quinqueloculina seminulum



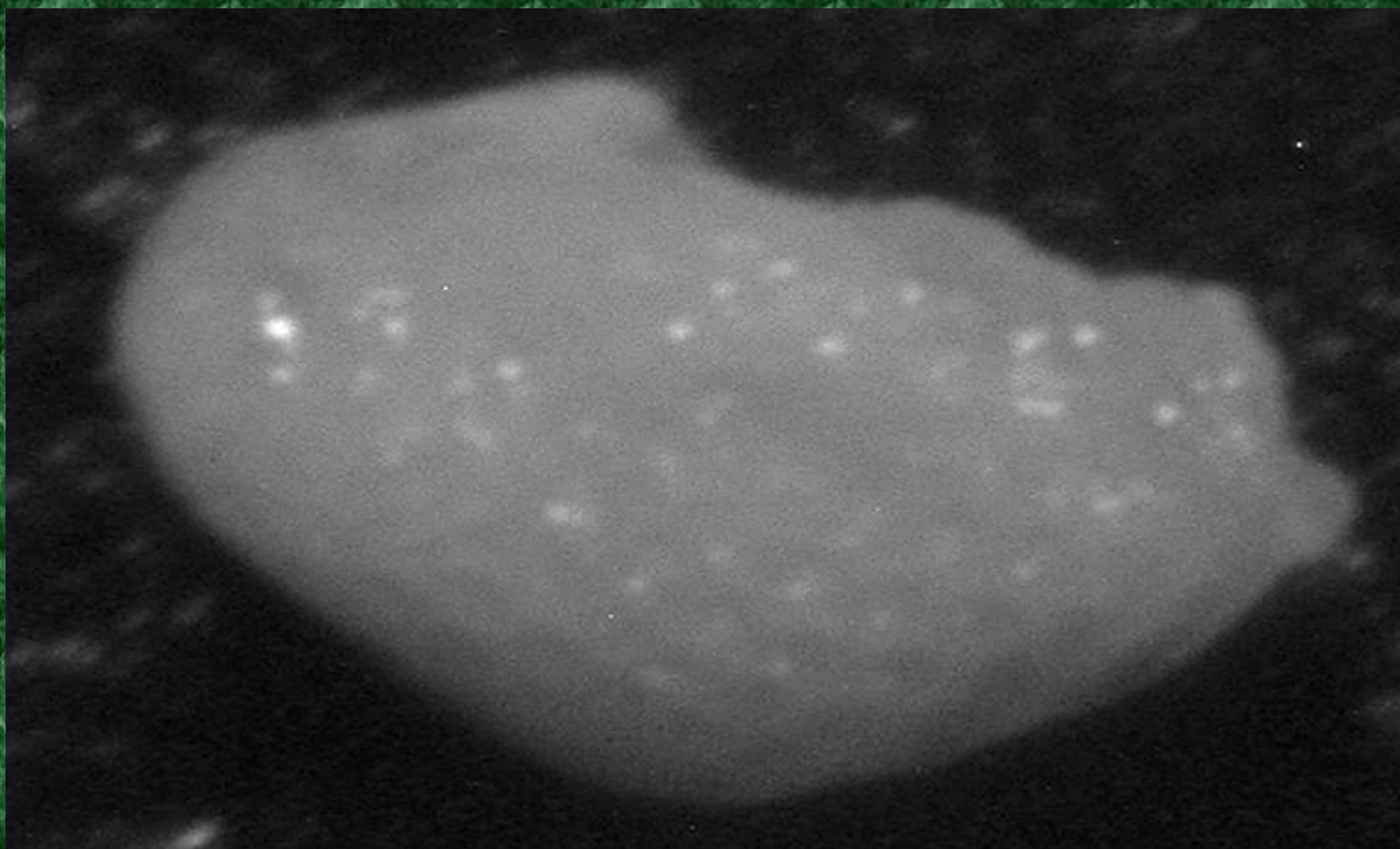
Triloculina linneiana



***Dentostomina agglutinans* ?**

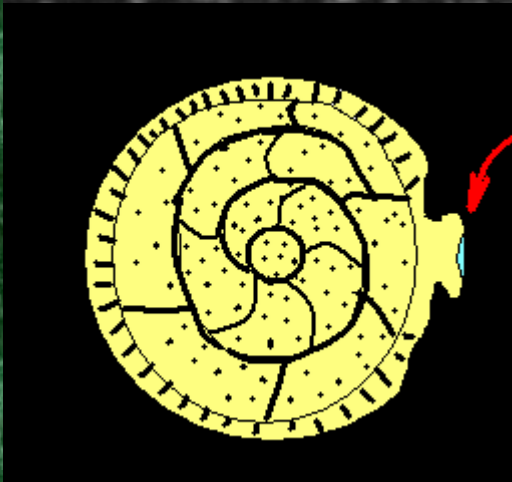
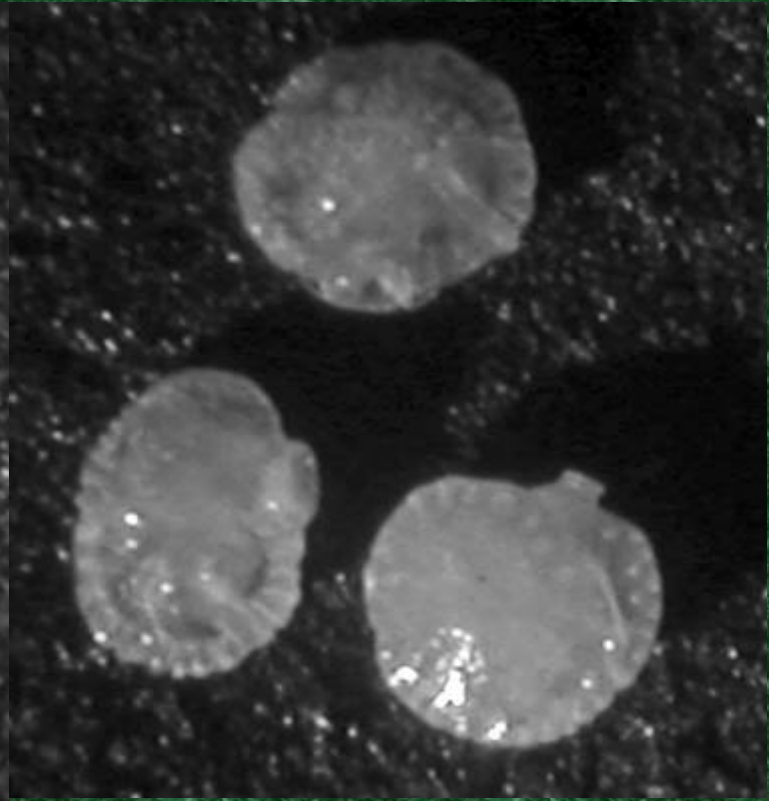
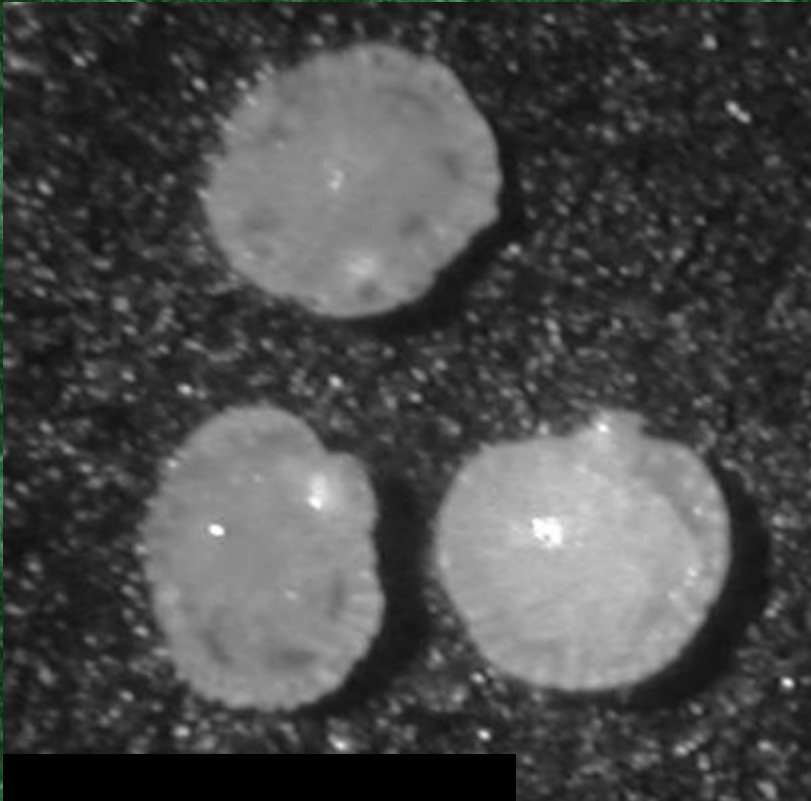


Quinqueloculata horrida



Quinqueloculina pseudoreticulata

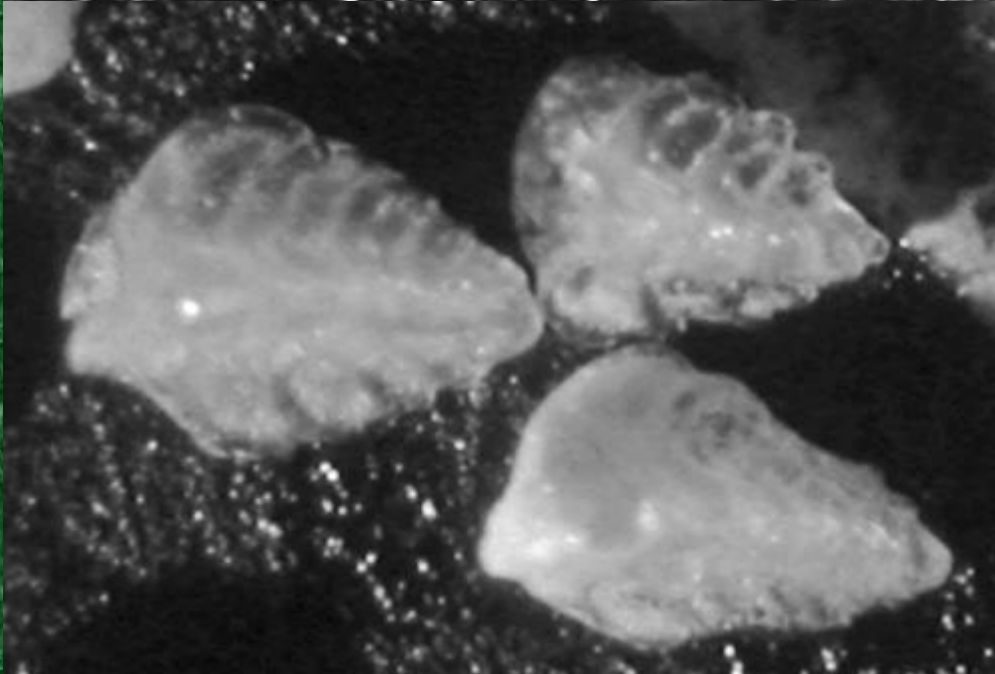
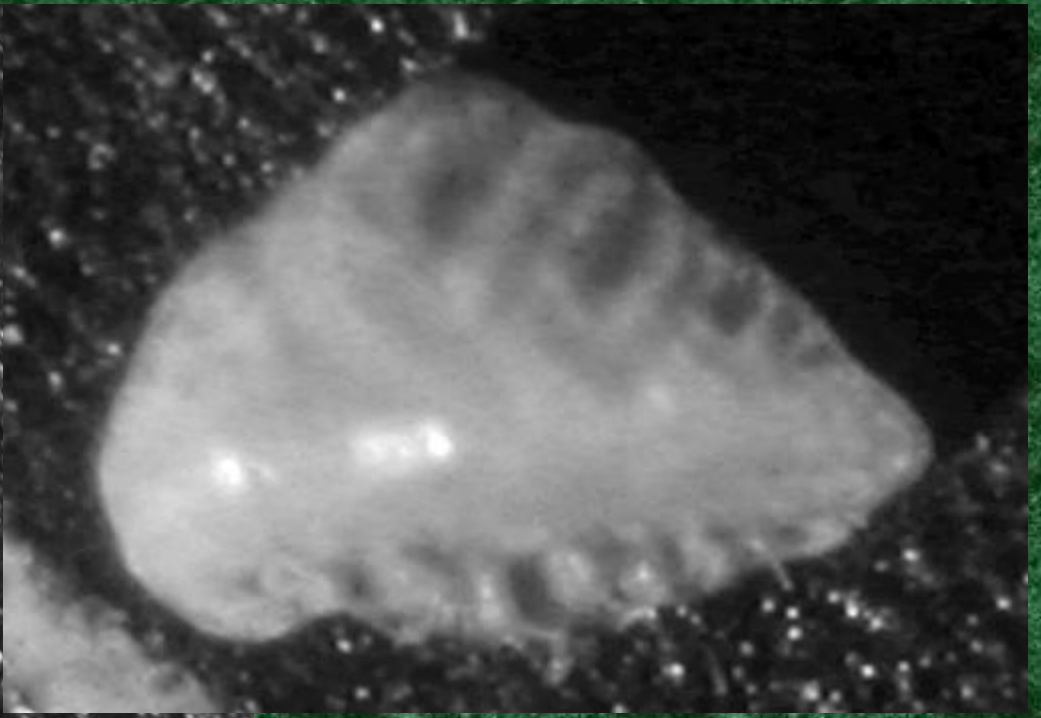
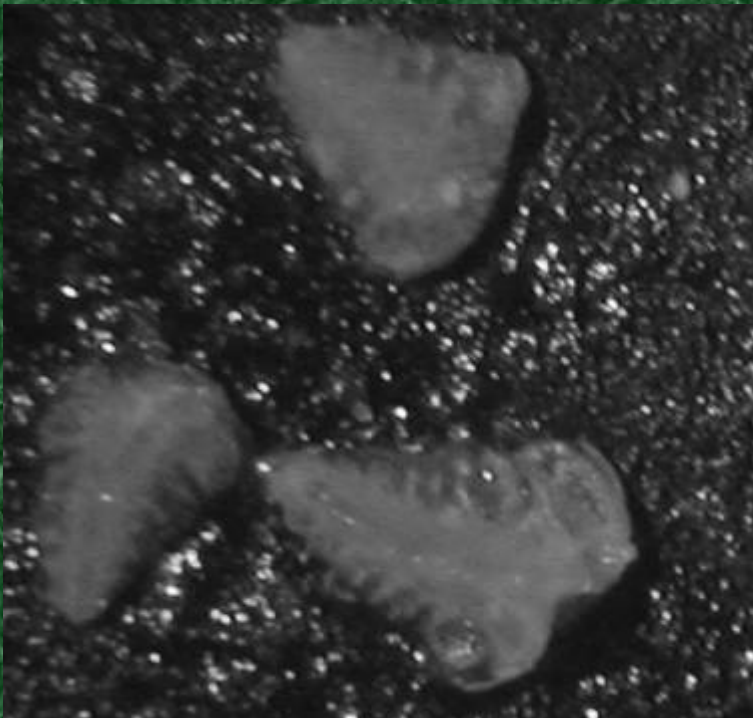
***Perforate
Rotallids***



Siphonina tubulosa

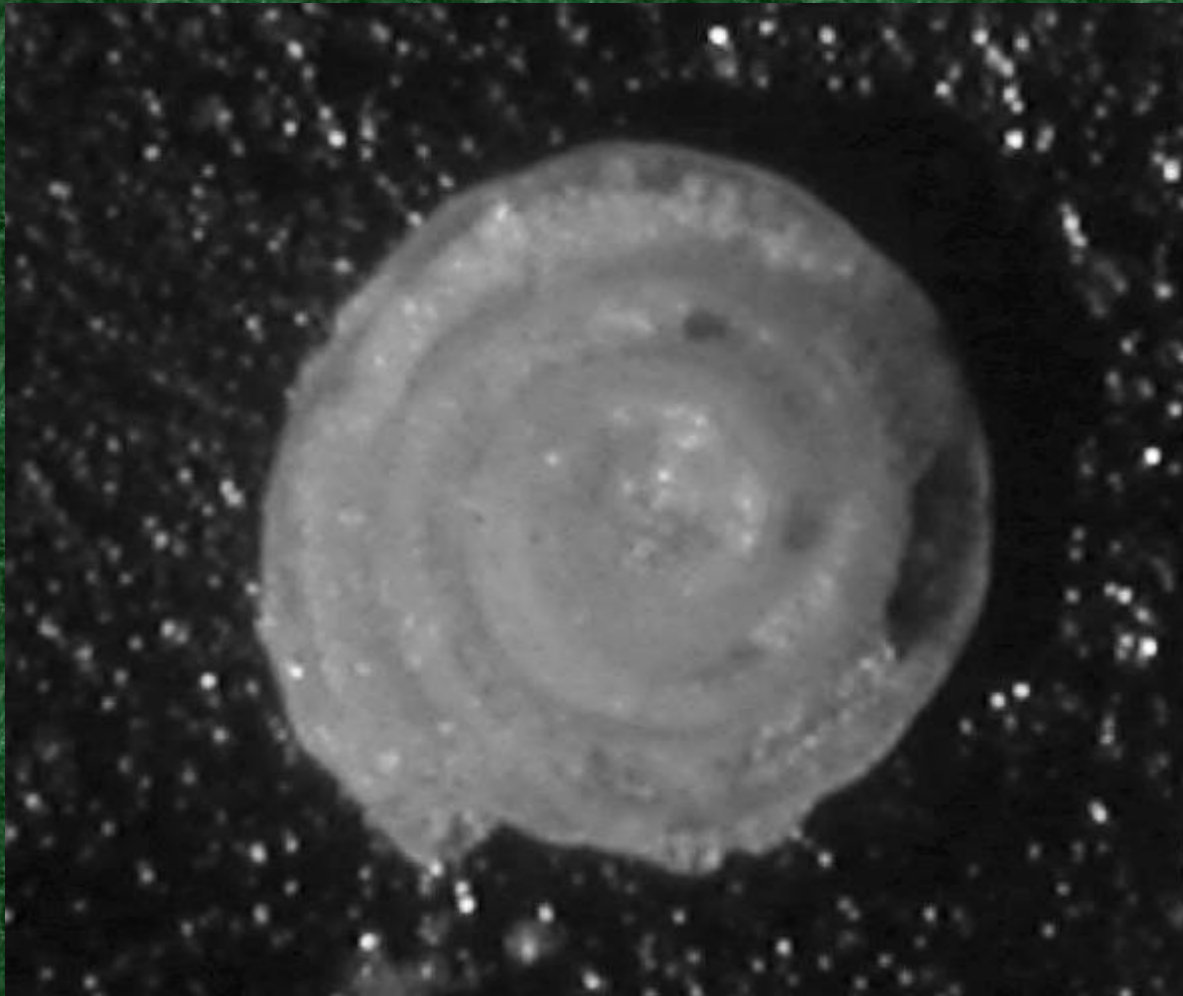


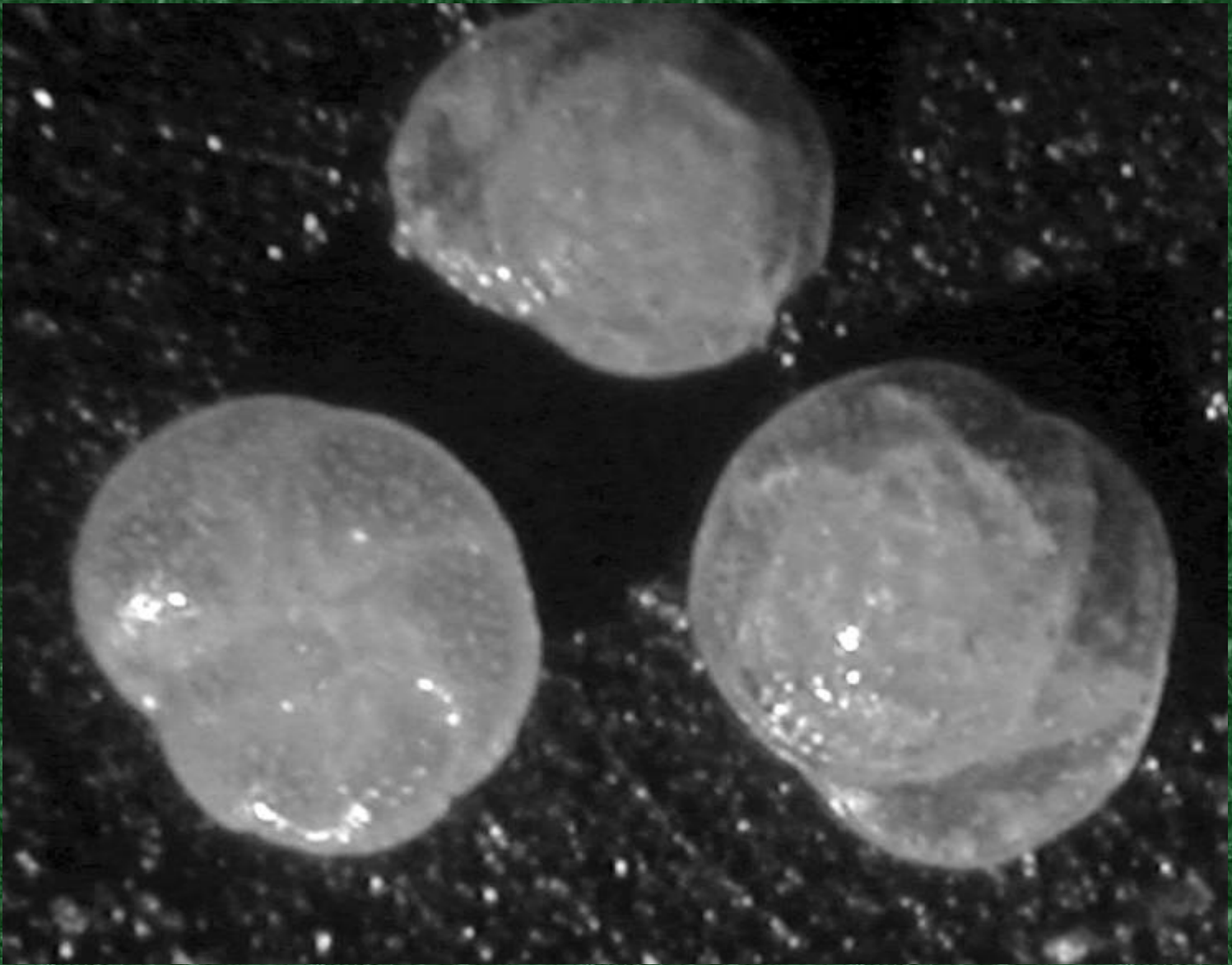
Homotrema rubrum



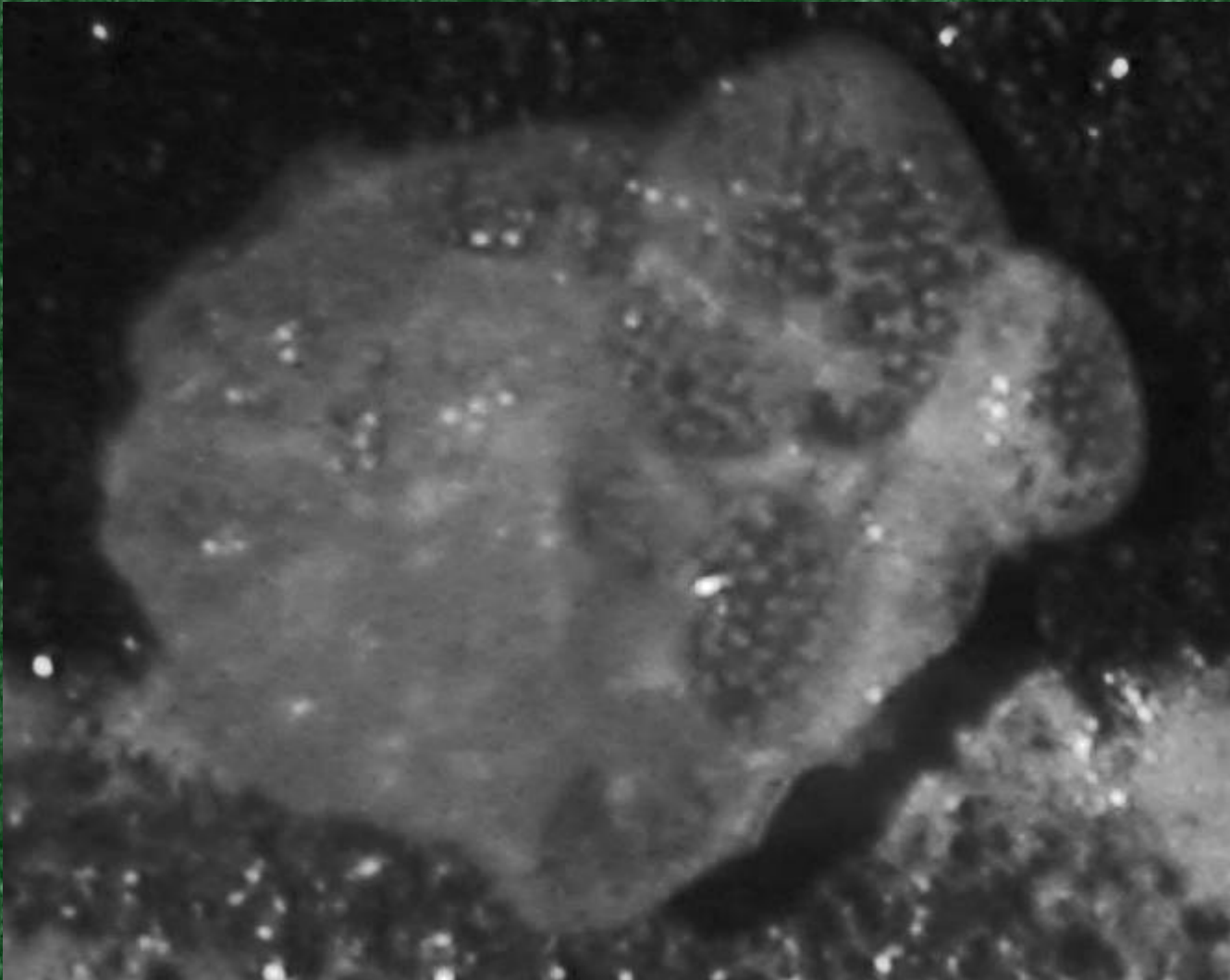
Reussella atlantica

Spirillina denticulata



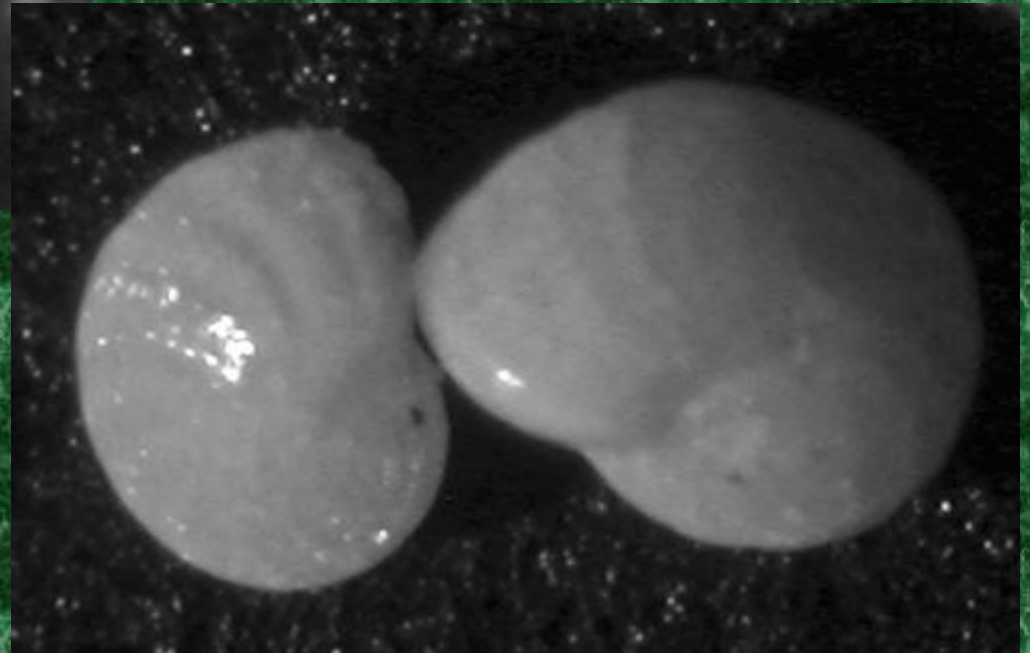
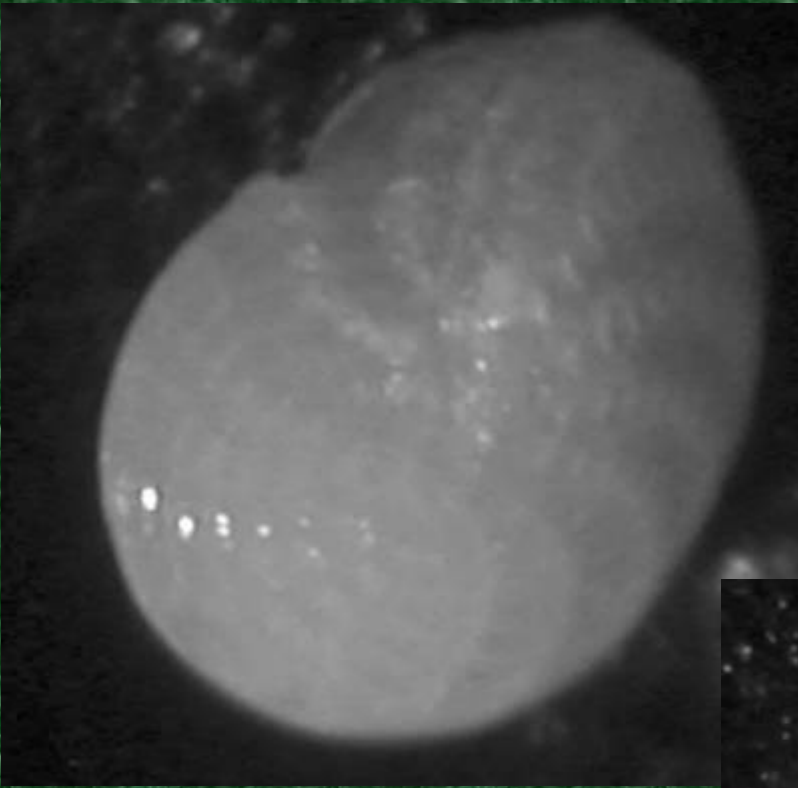


Eponides repandus

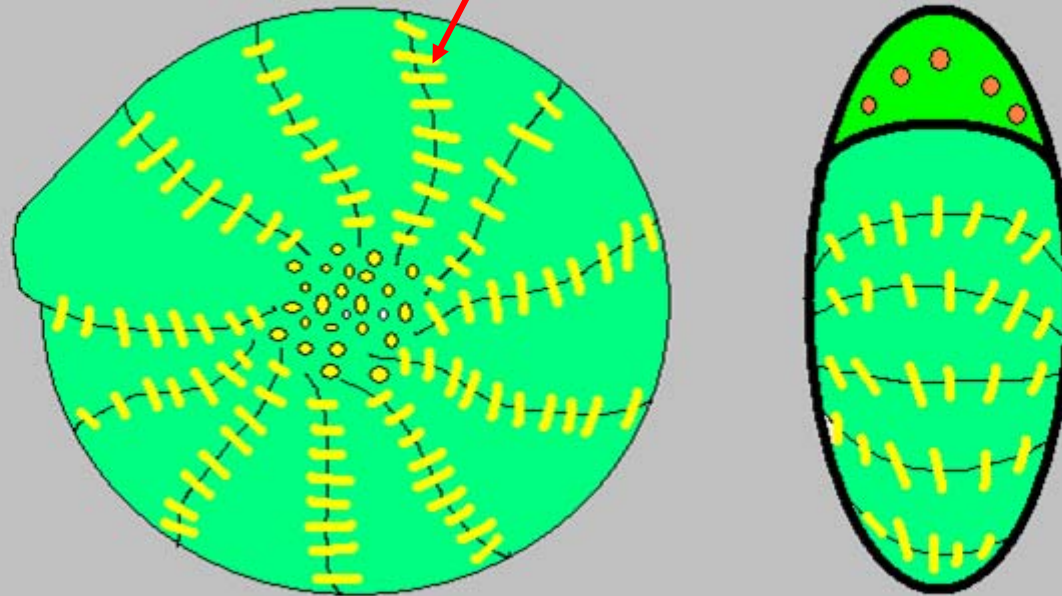


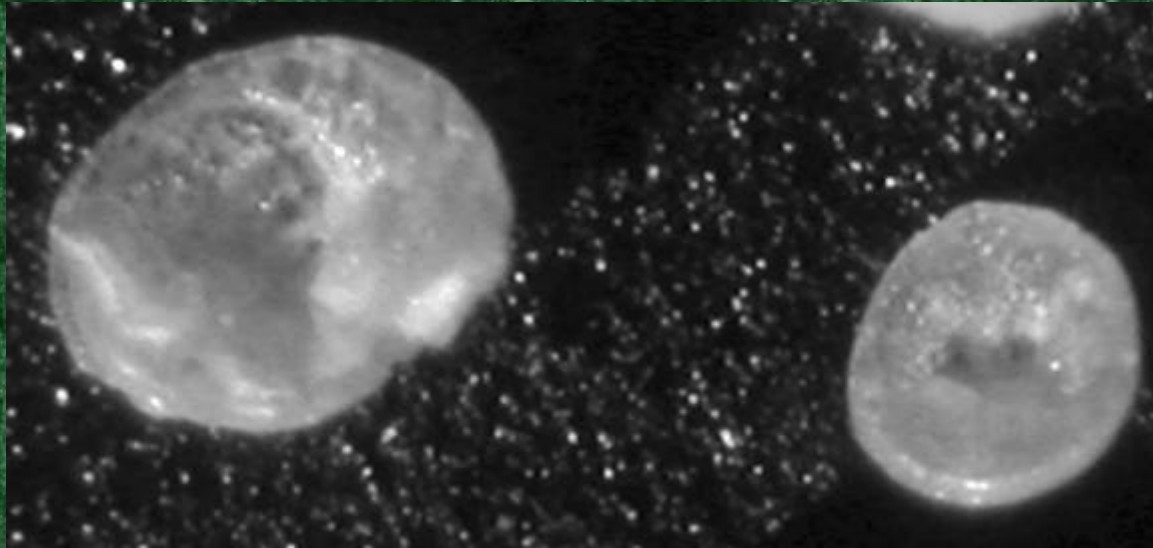
Acervulina inhaerens

Elphidium sagrum

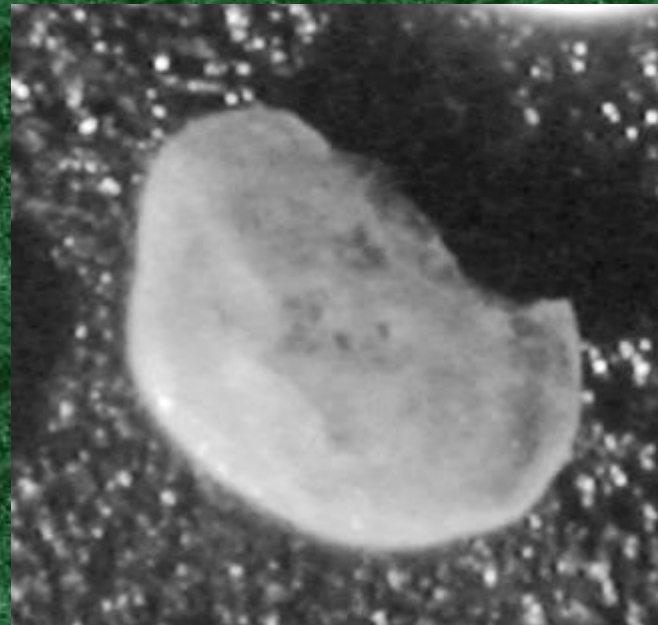
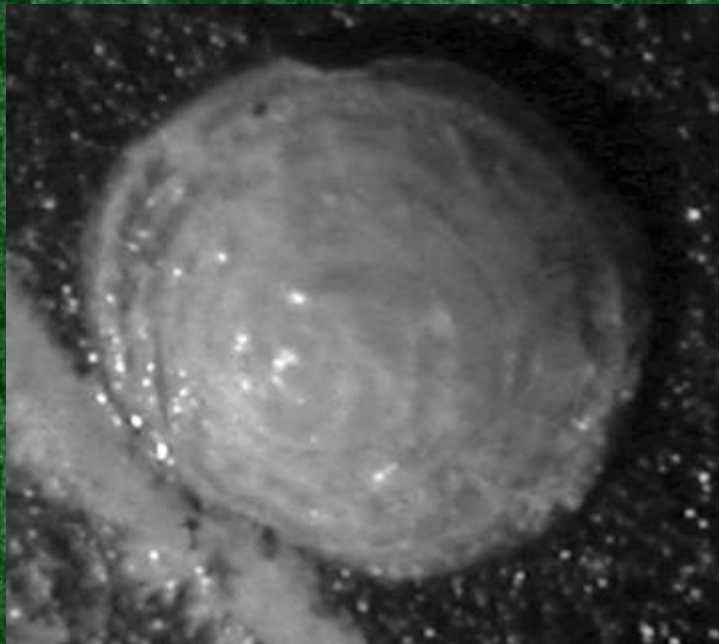


Elphidium: retral processes



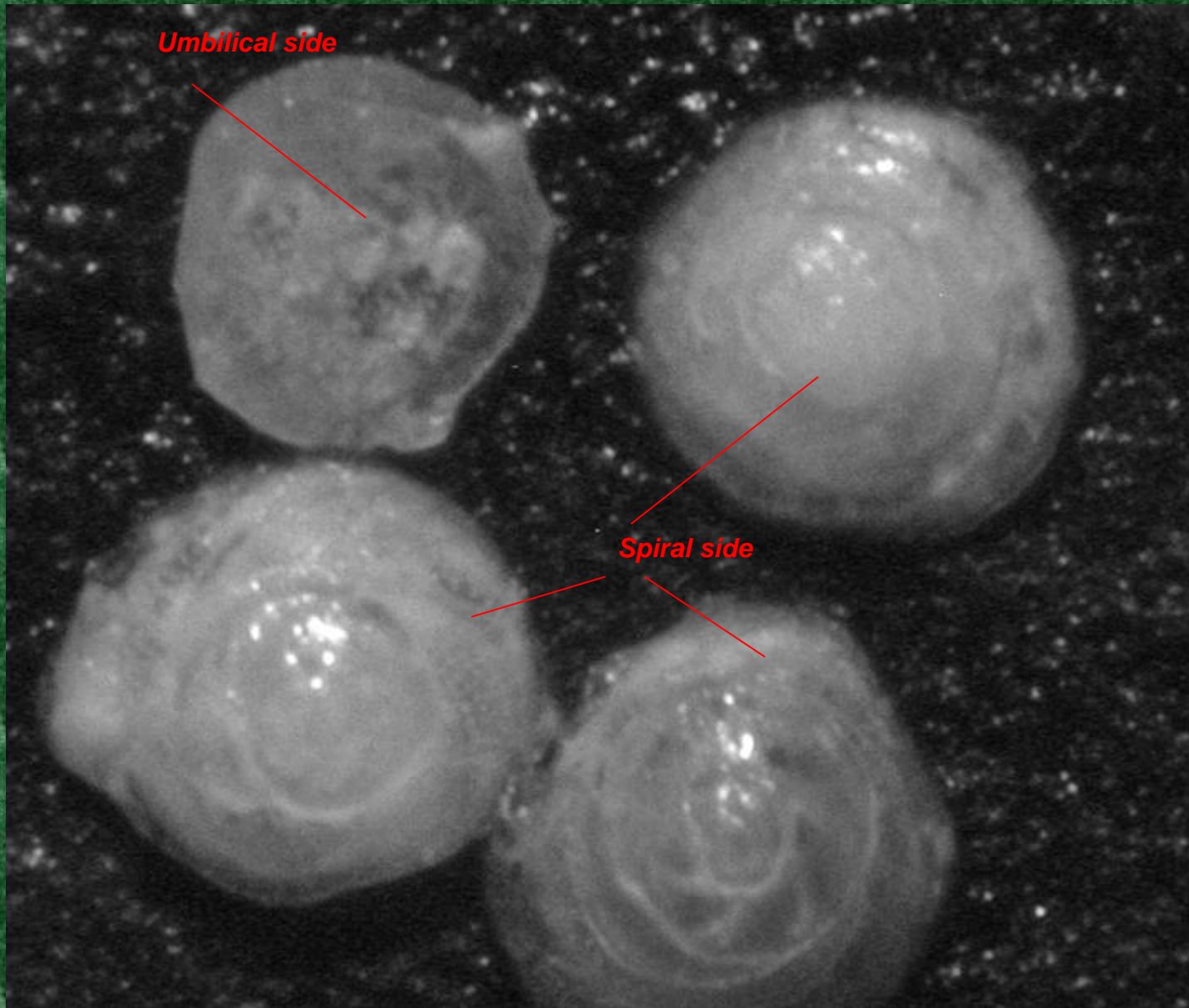


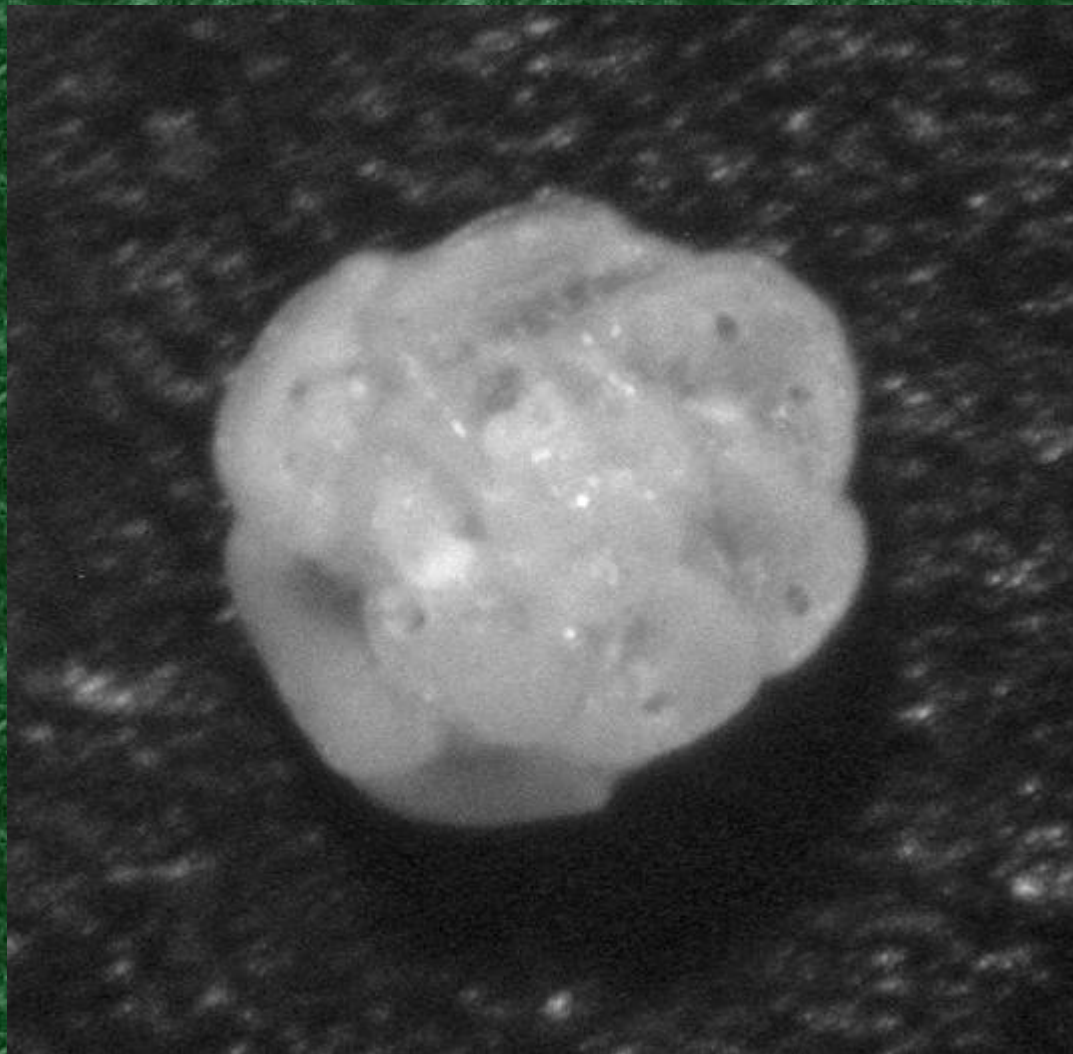
*Neokonorbina
orbicularis*



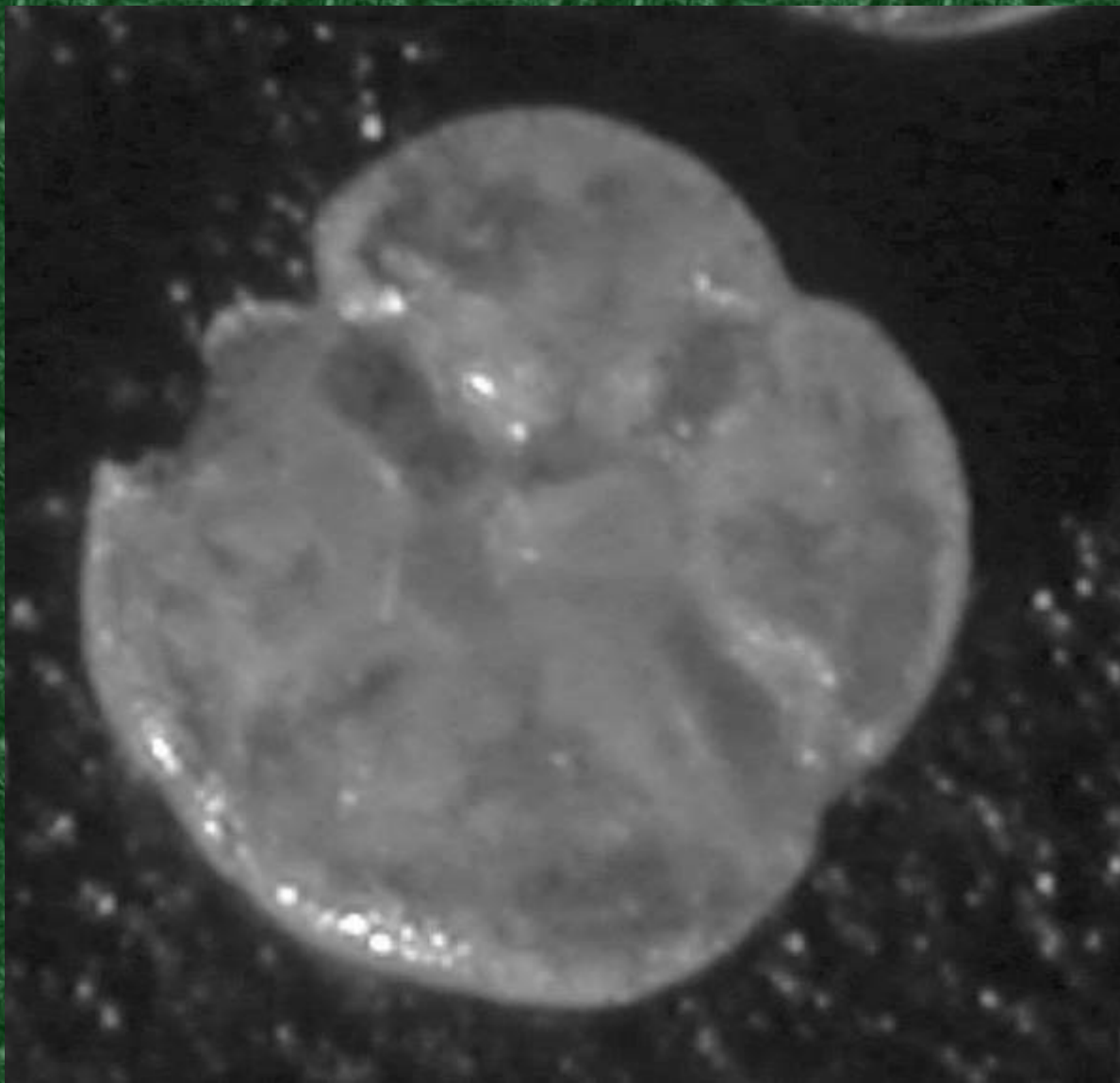
Neonorbina orbicularis

Concavo-convex

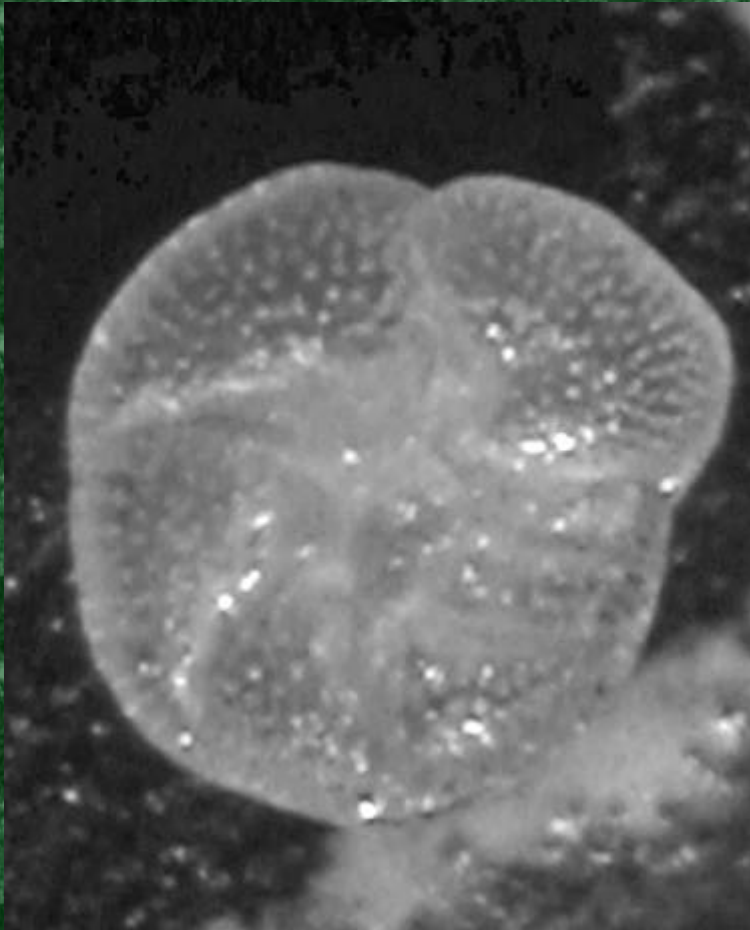




Planulina foveolata



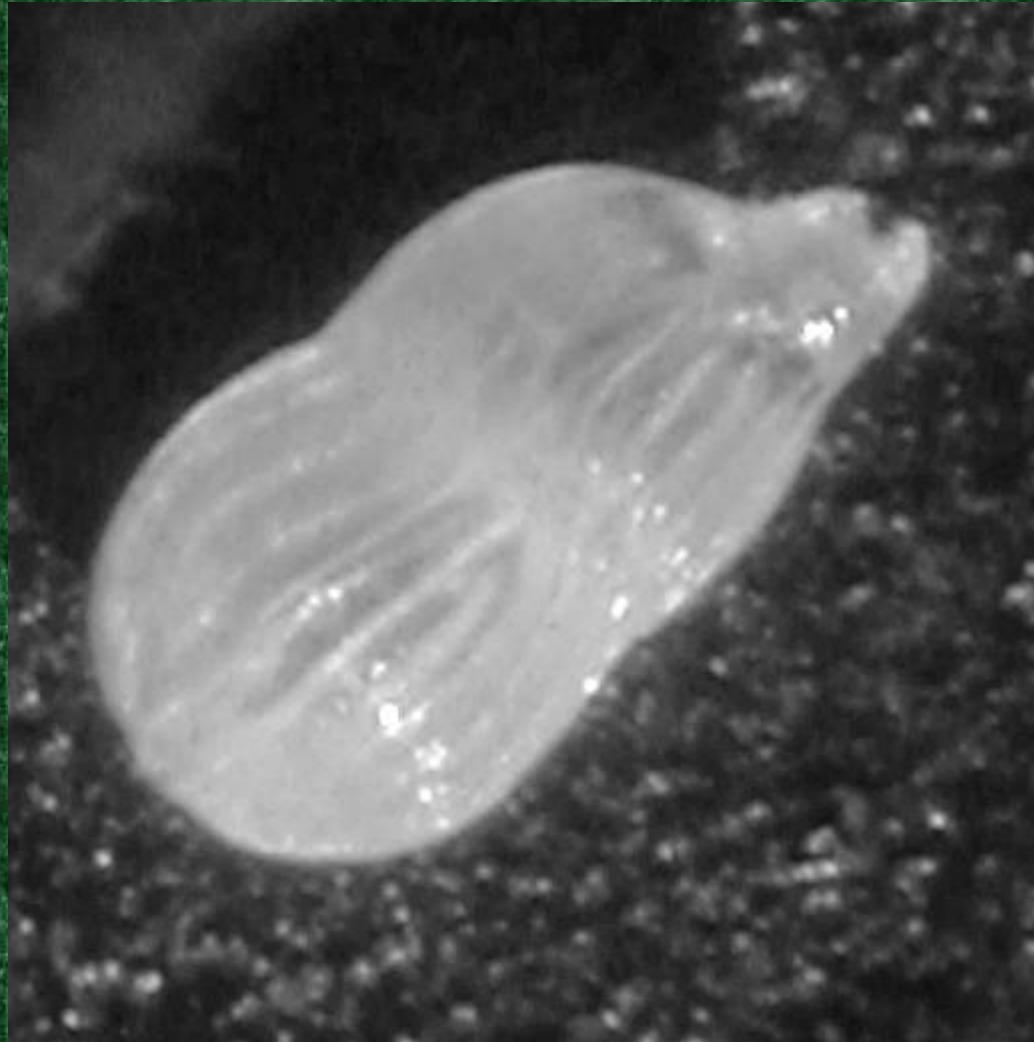
Cymbaloporetta sp. ?



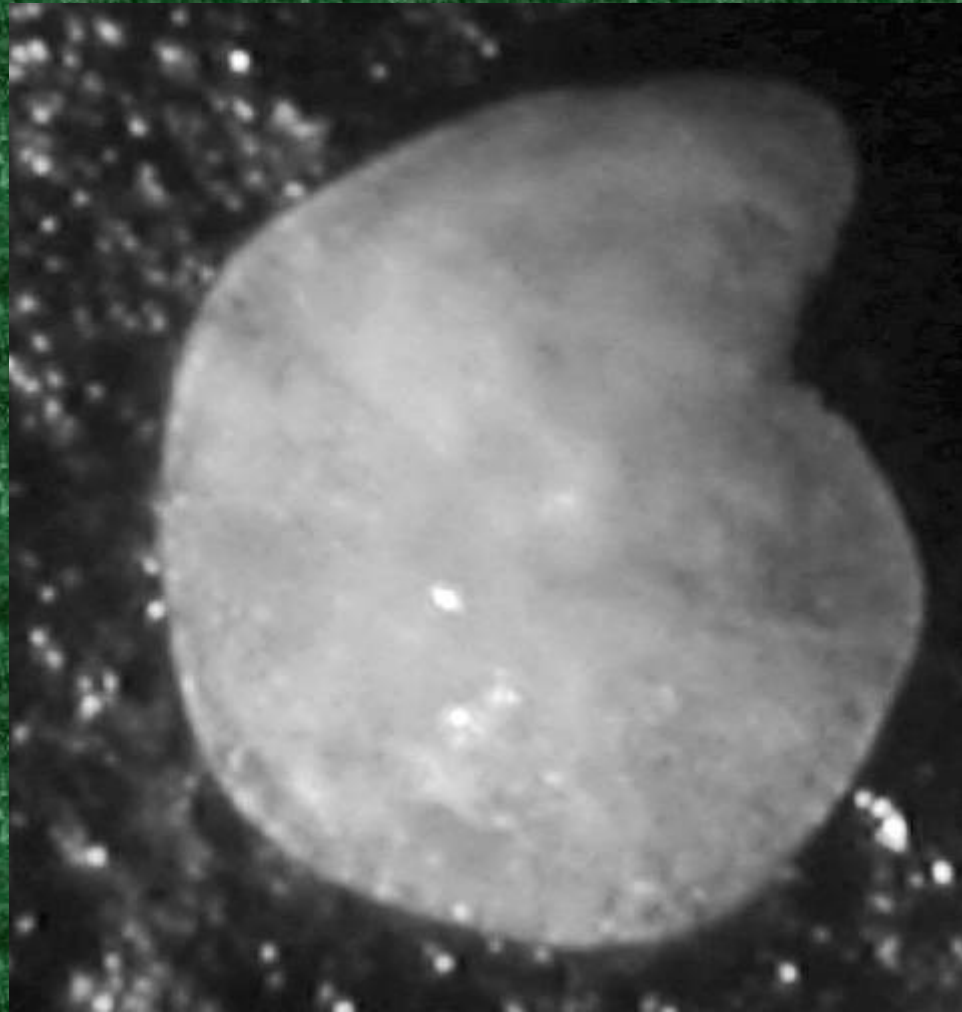
Rosalina floridana



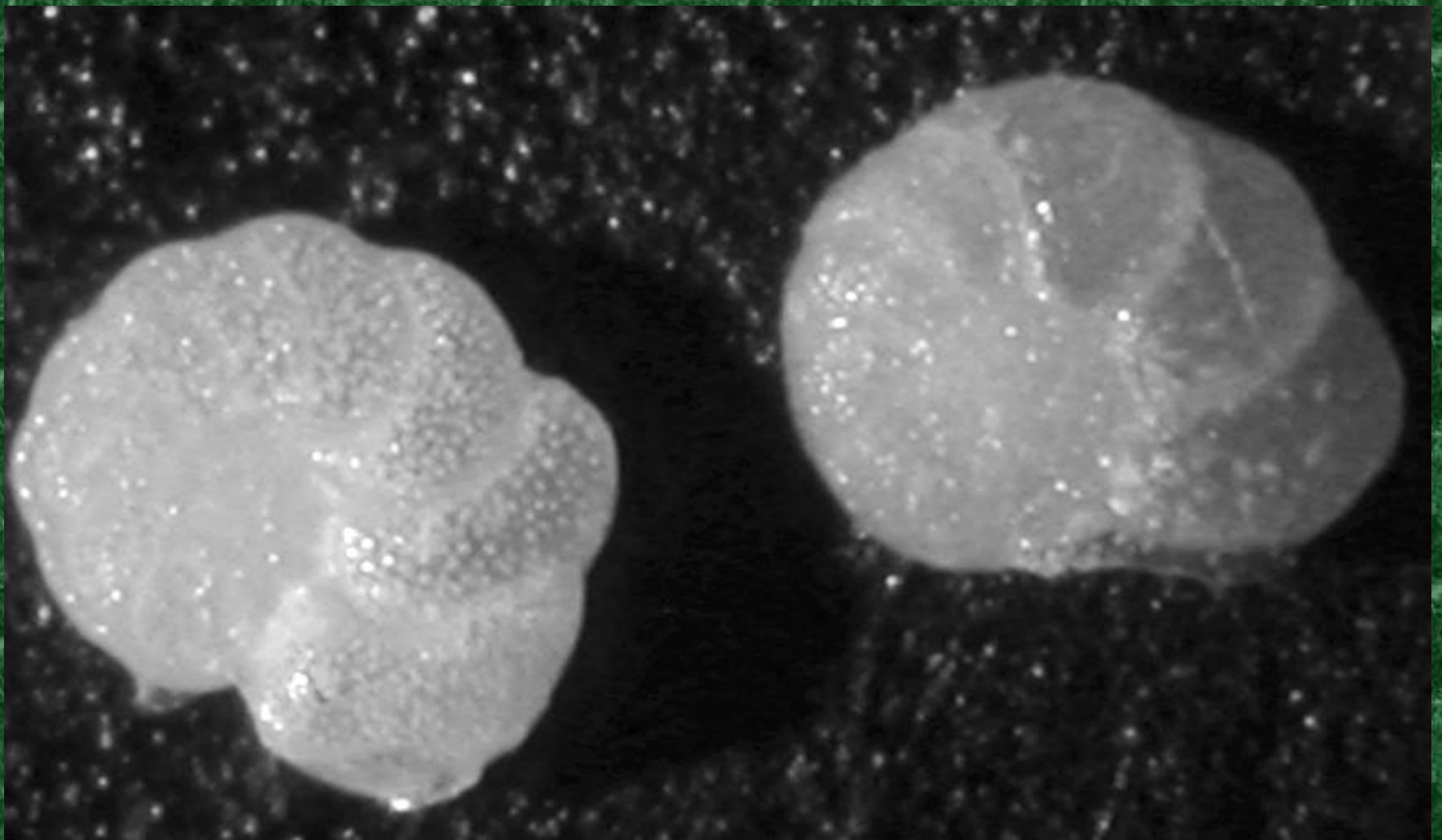
Cibicides sp.



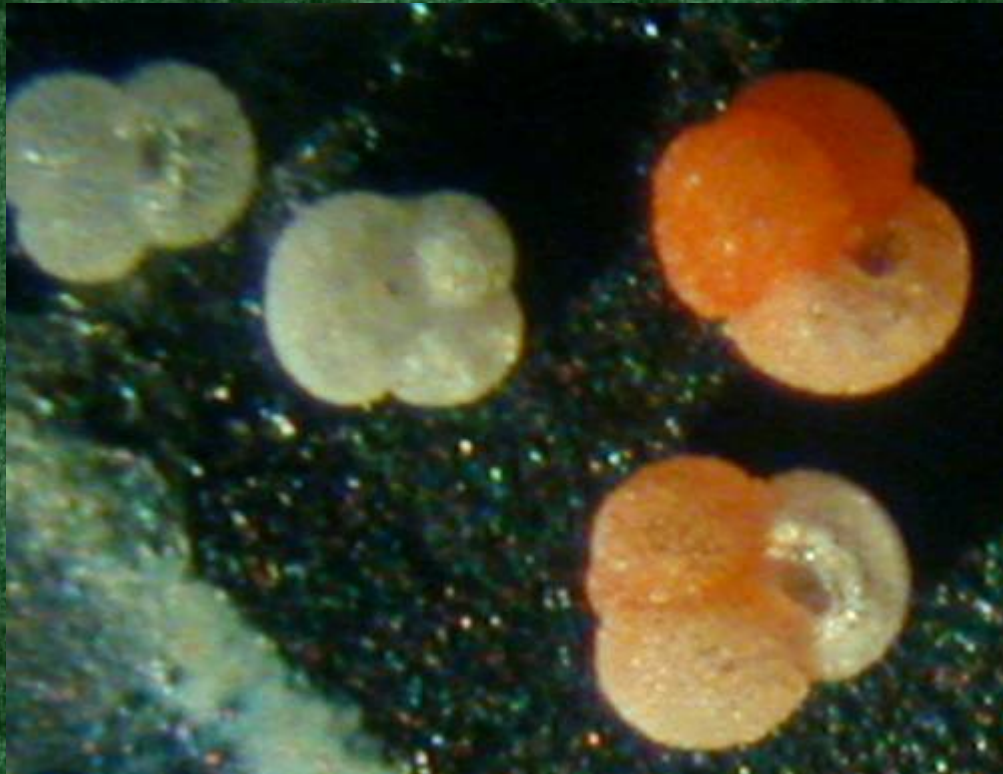
Marginulinopsis bradyi



Asterigerina carinata



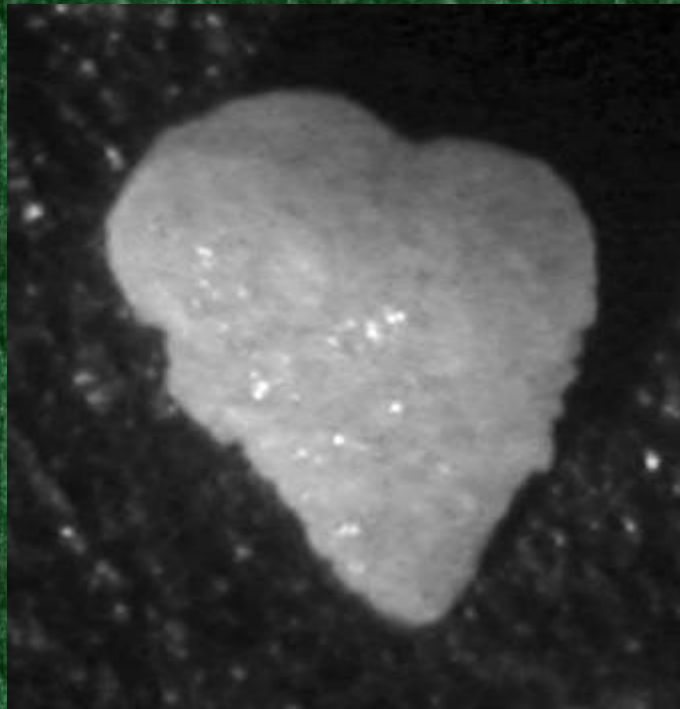
Planulina exorna



Globigerinoides ruber

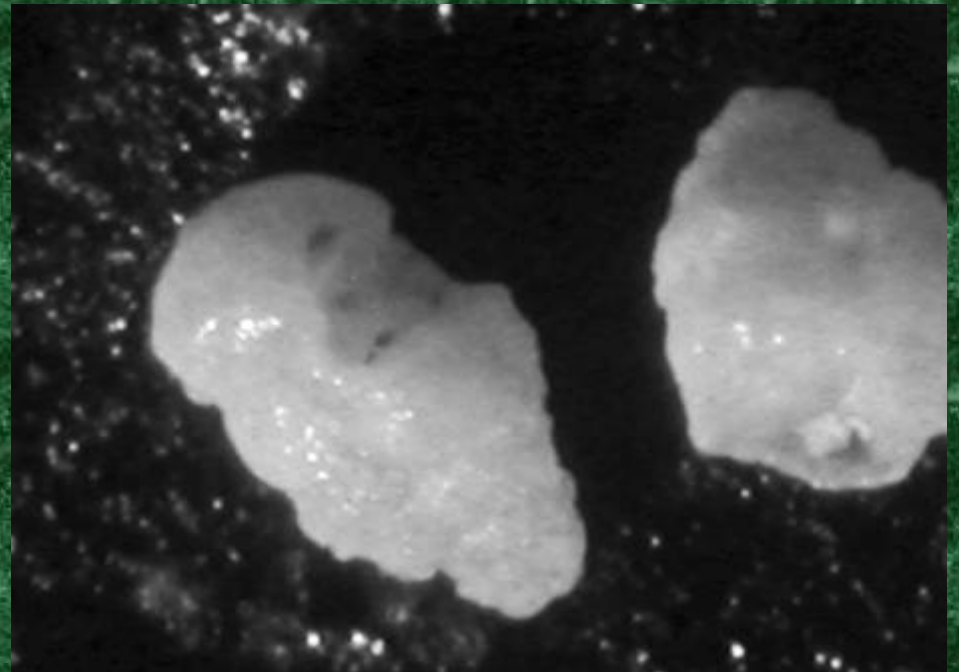
A Planktonic Foram wafted in from the open ocean

Agglutinated Forms

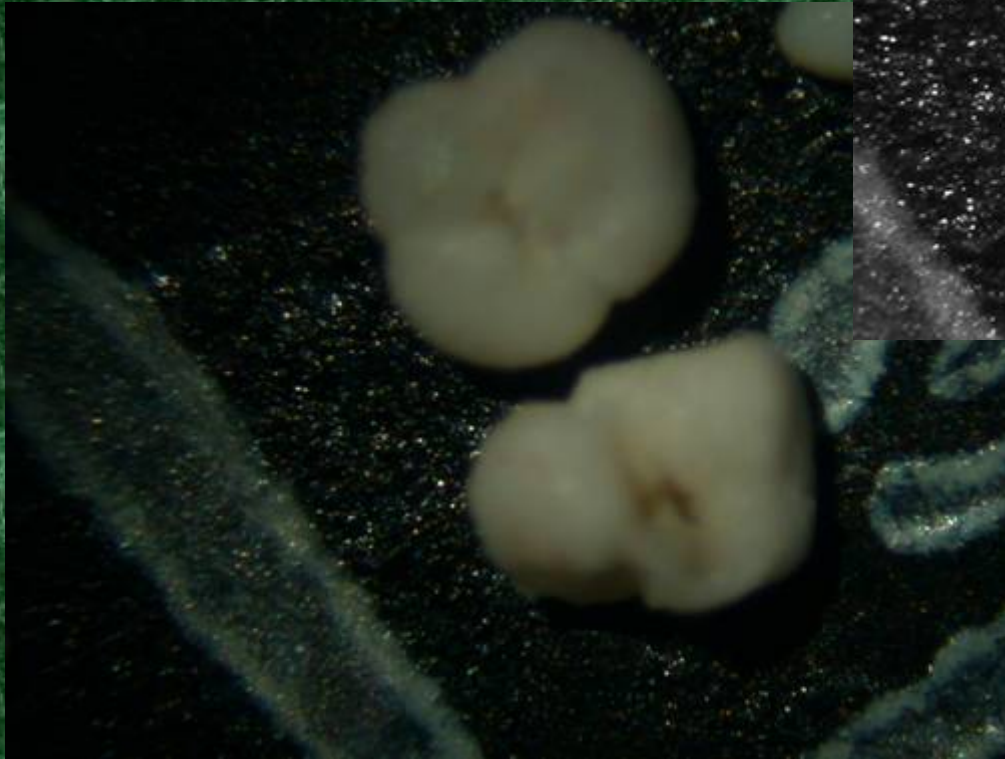
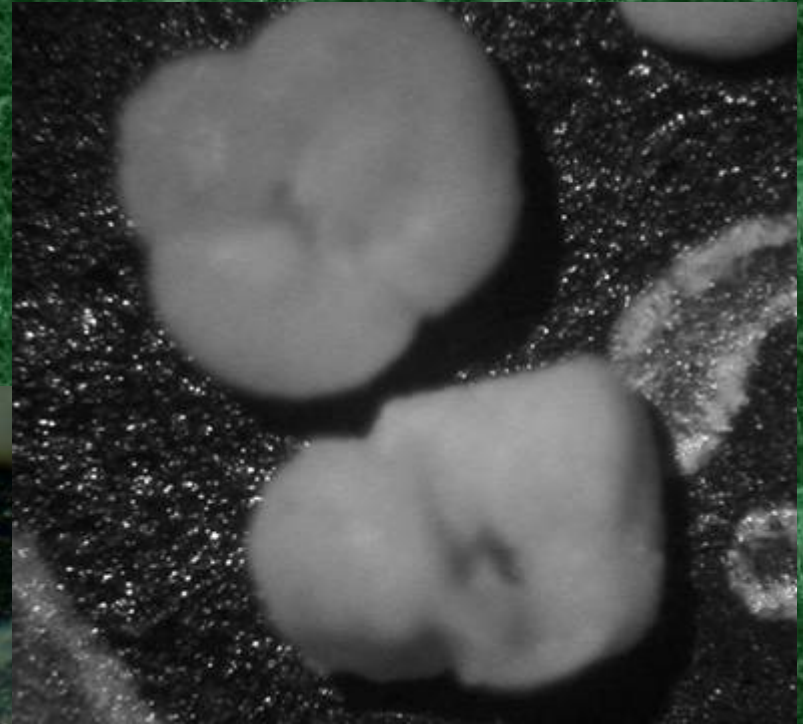


Textularia conica

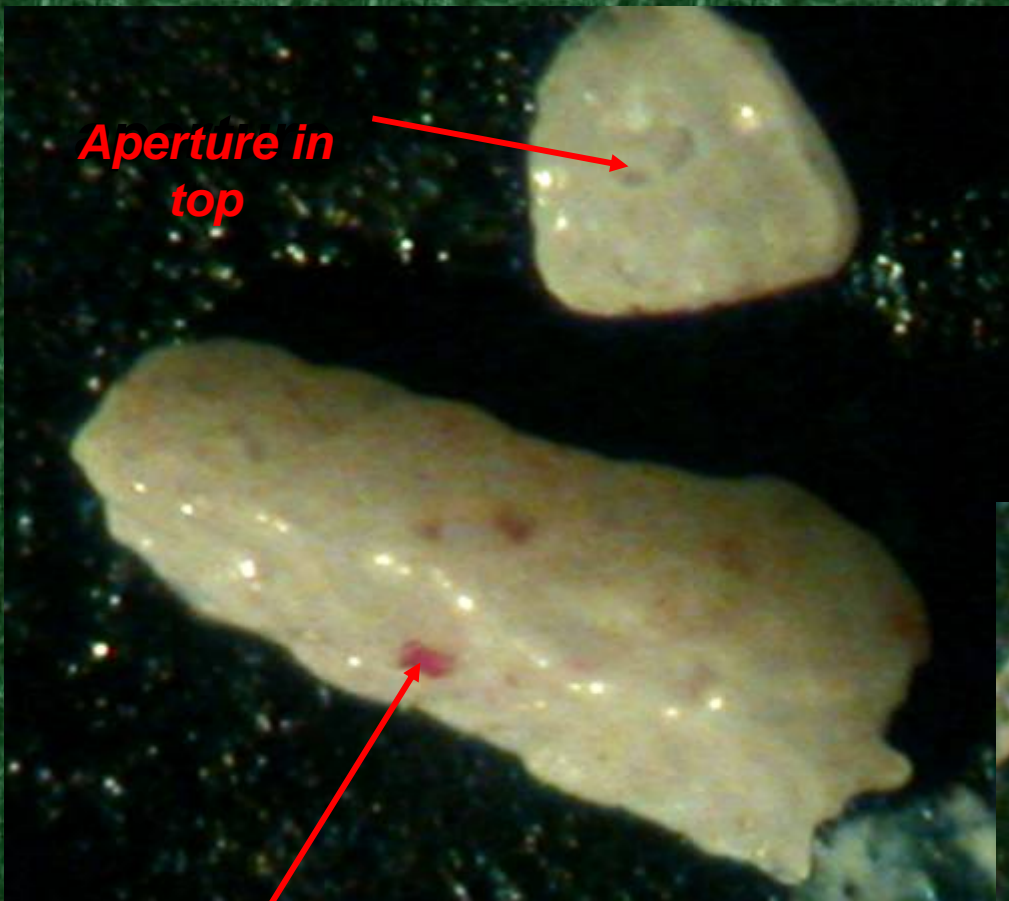
Textularia agglutinans



Large agglutinated form
with 'toothed' aperture:
unknown f/g/s



Possibly
Valvulina
oviedoiana ?



Aperture in top

Using Homotrema rubrum fragments

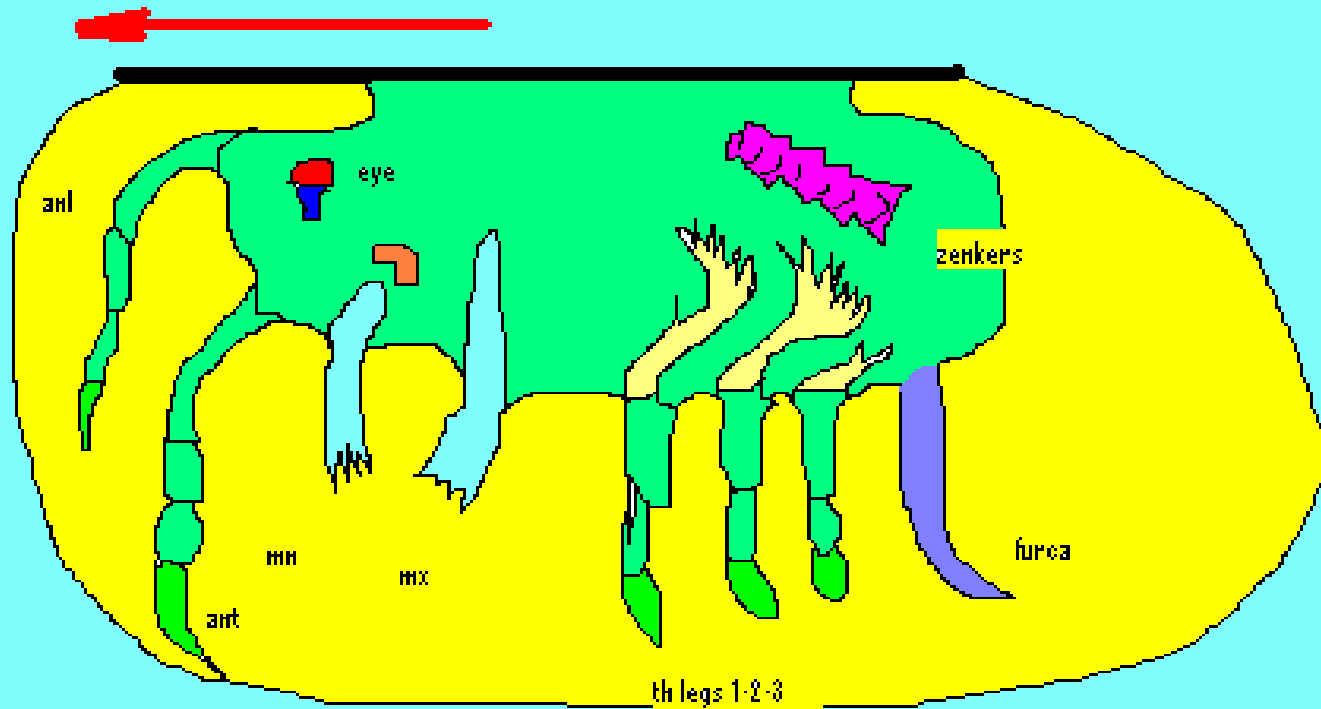


Reussella

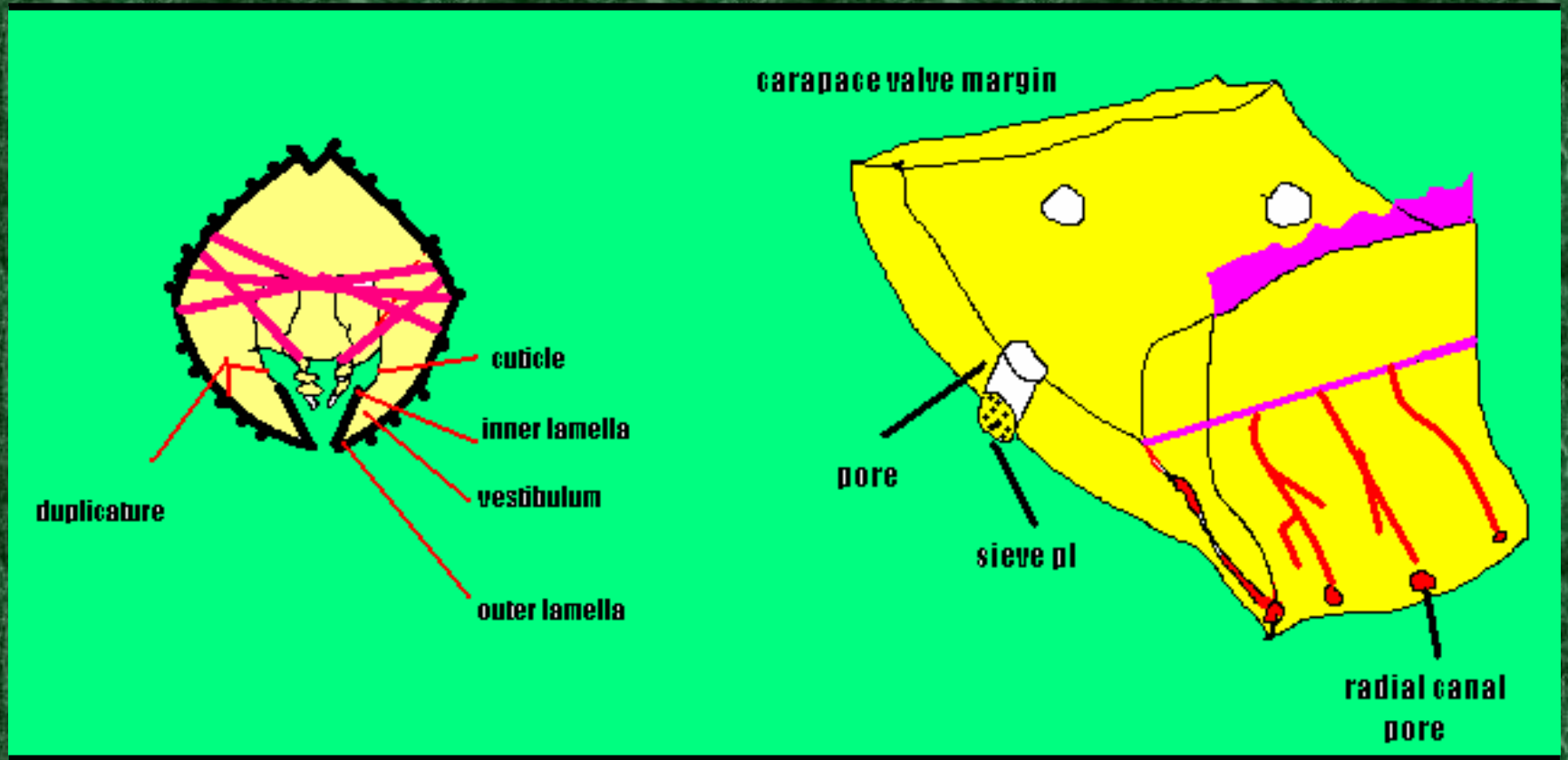
Clavulina carinata

Ostracoda

Ostracode Guts

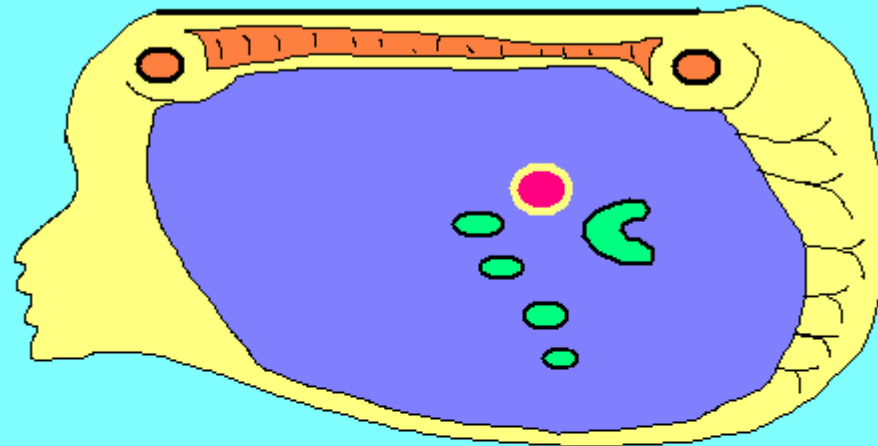


Cross Section and Duplicature

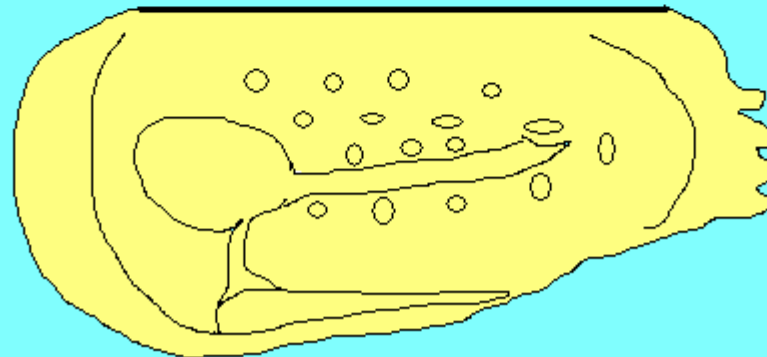


Crustacea: Ostracodes

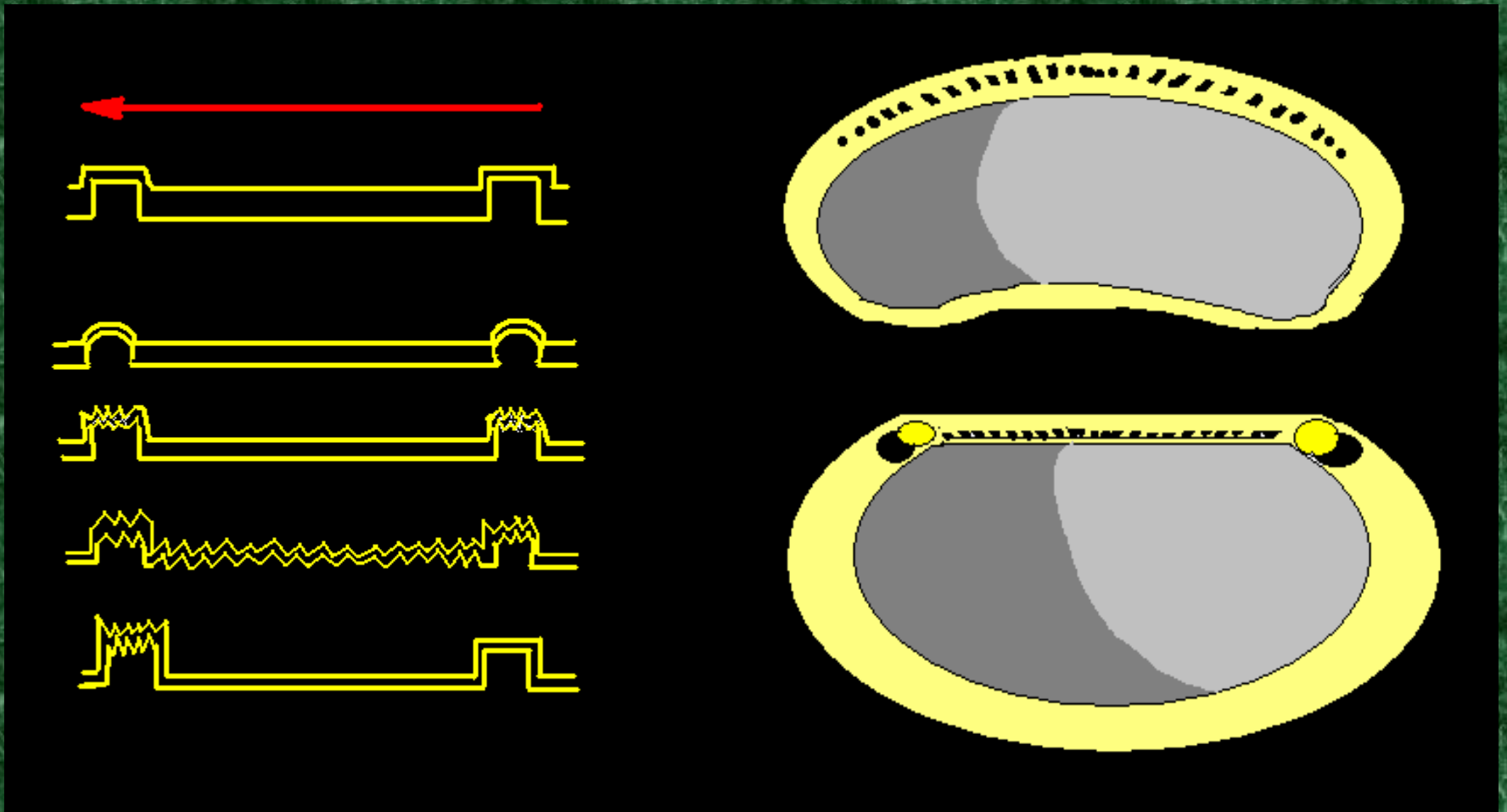
Internal view Left Valve



External view Left Valve

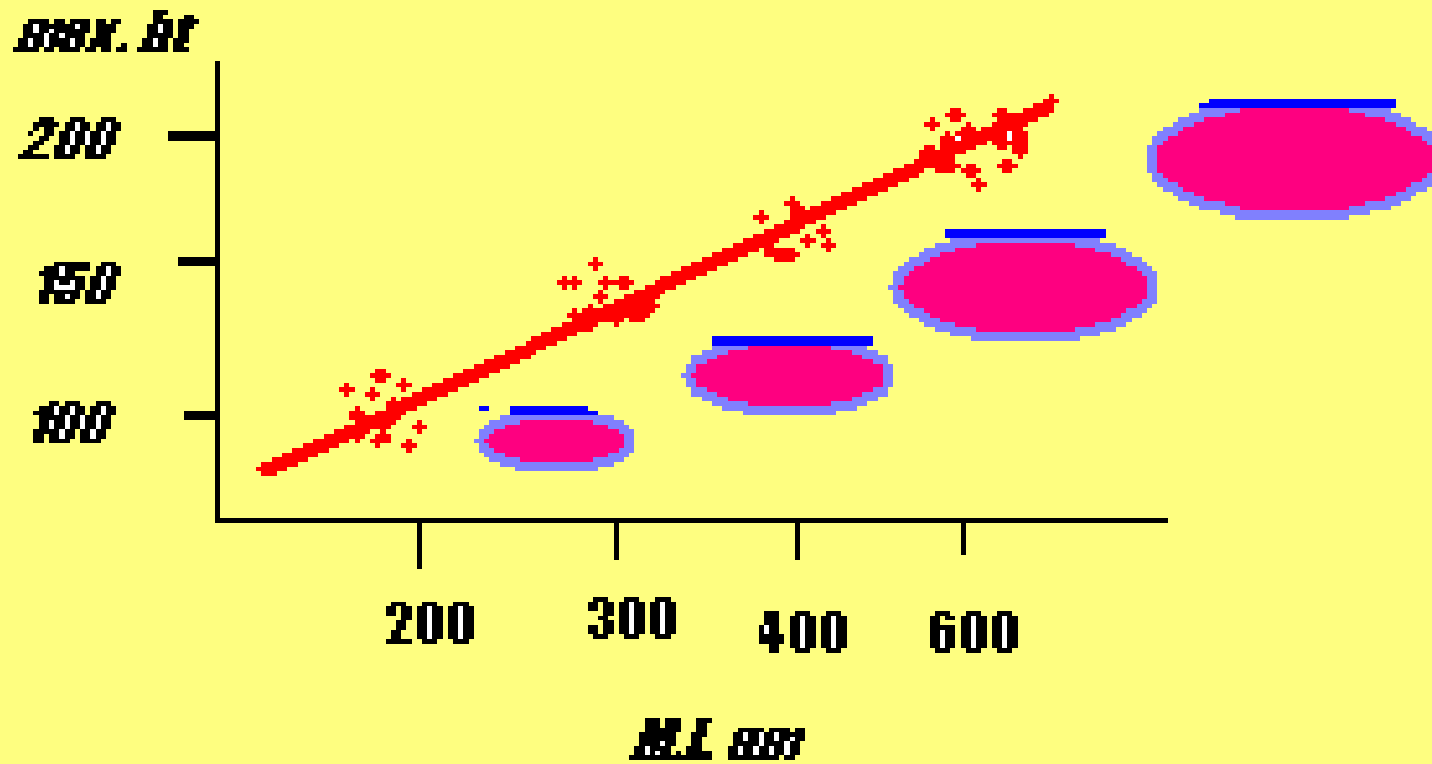


Hinges & Classification

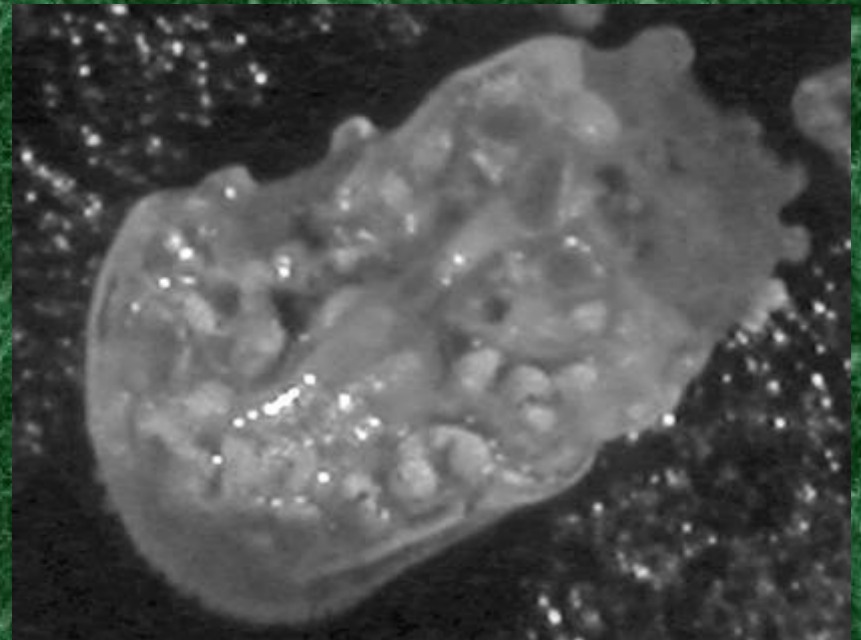
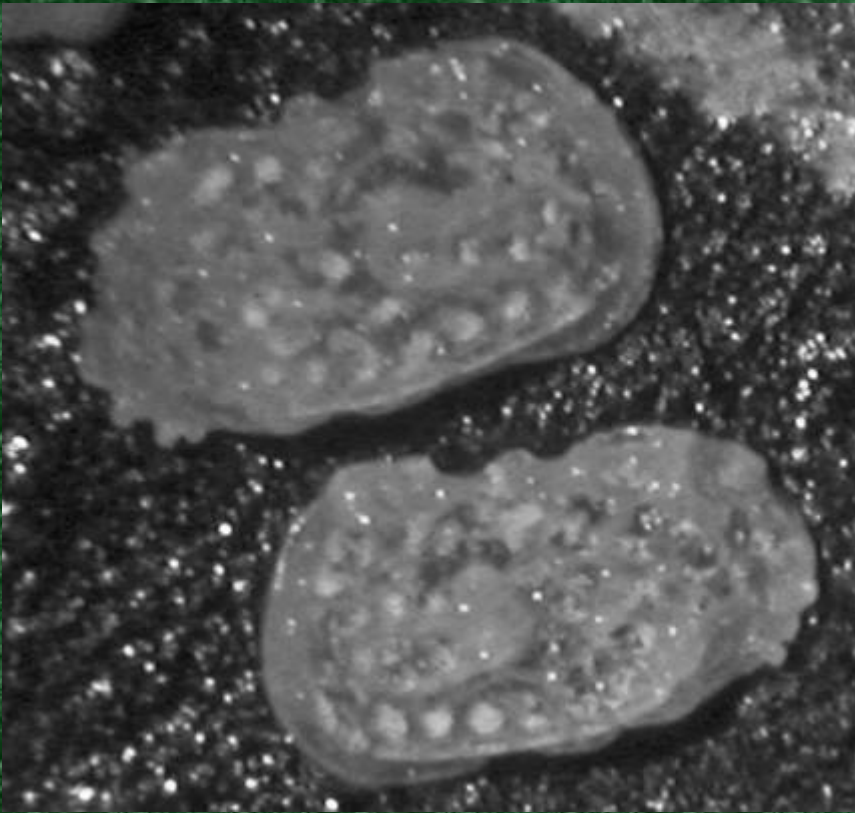


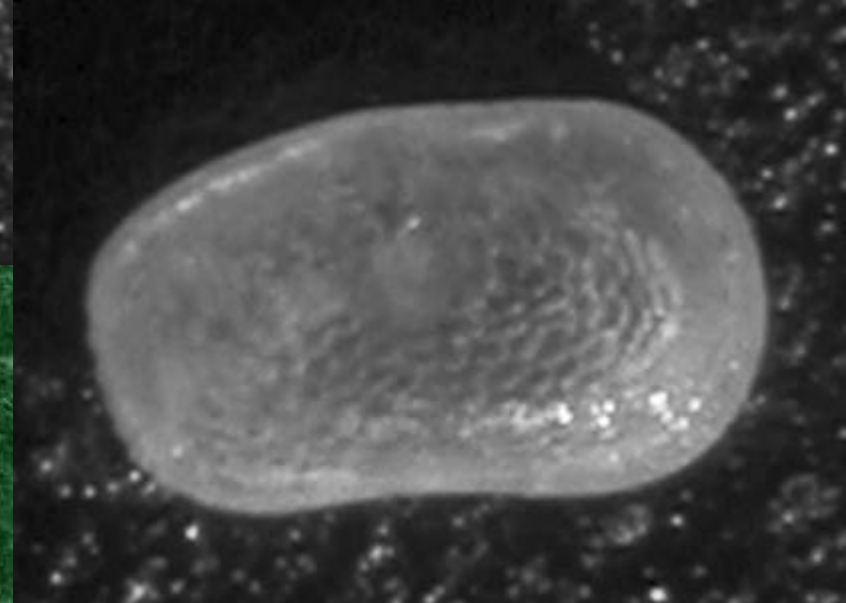
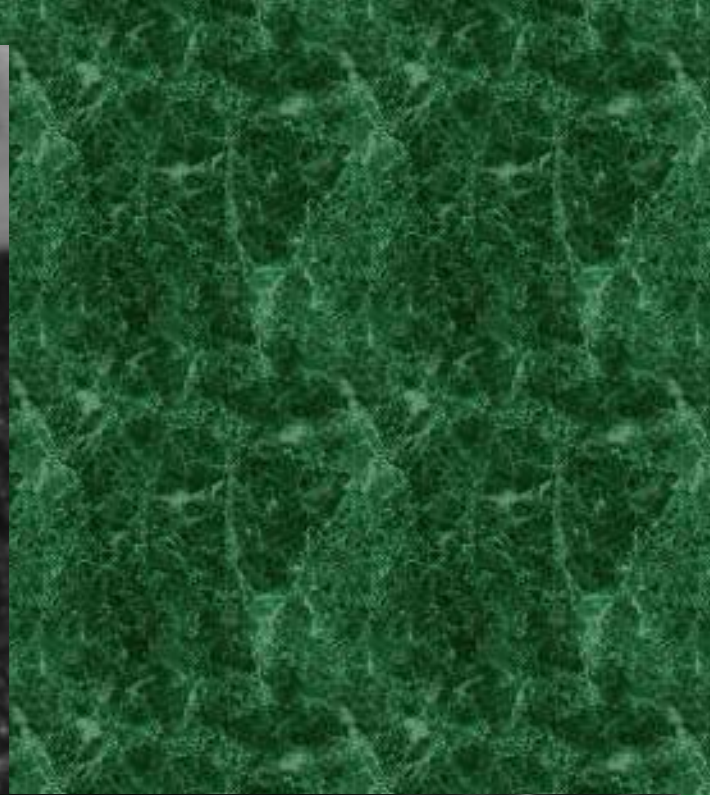
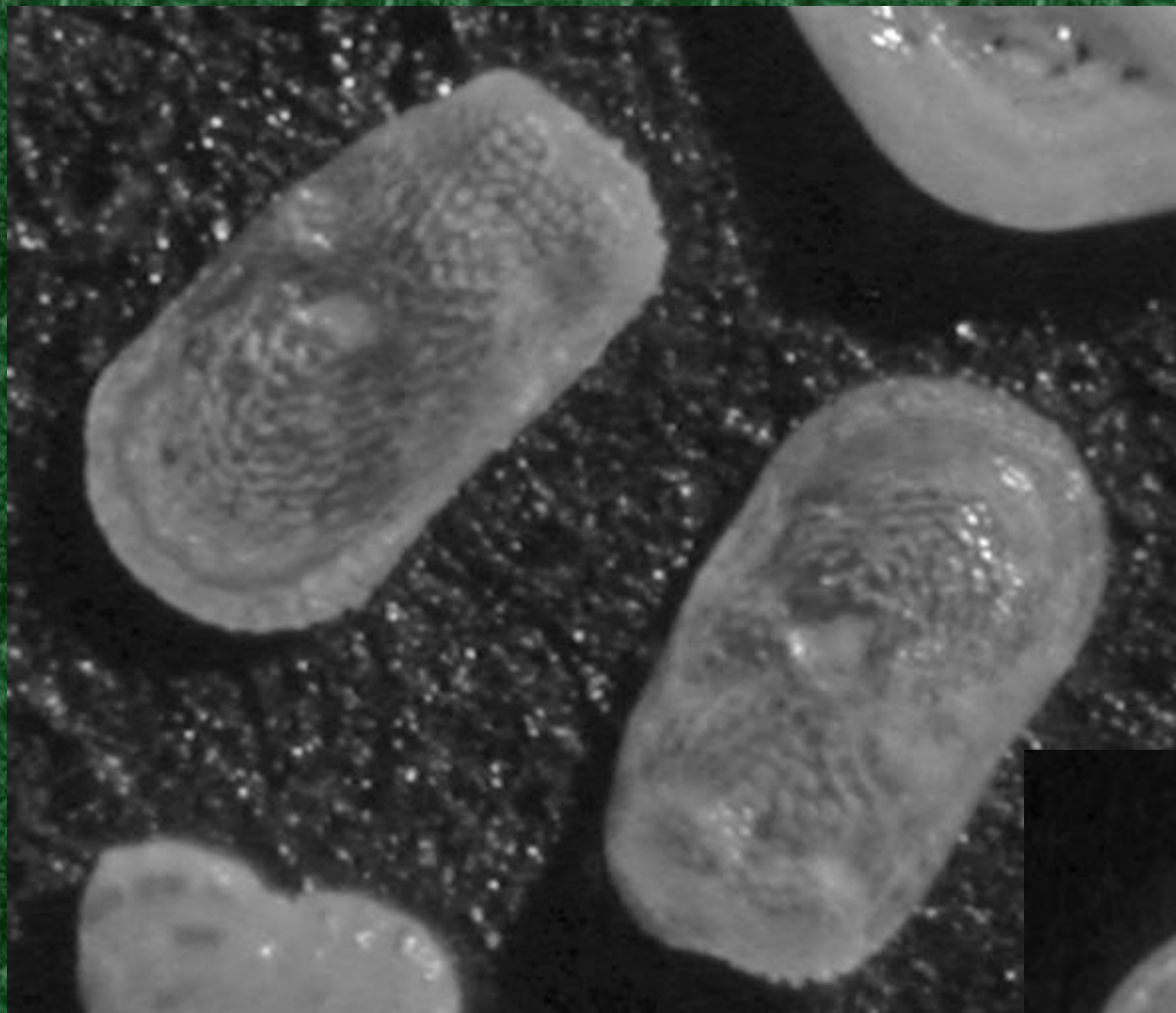
INSTARS

Ecdysis = Molting = Larva to Adult

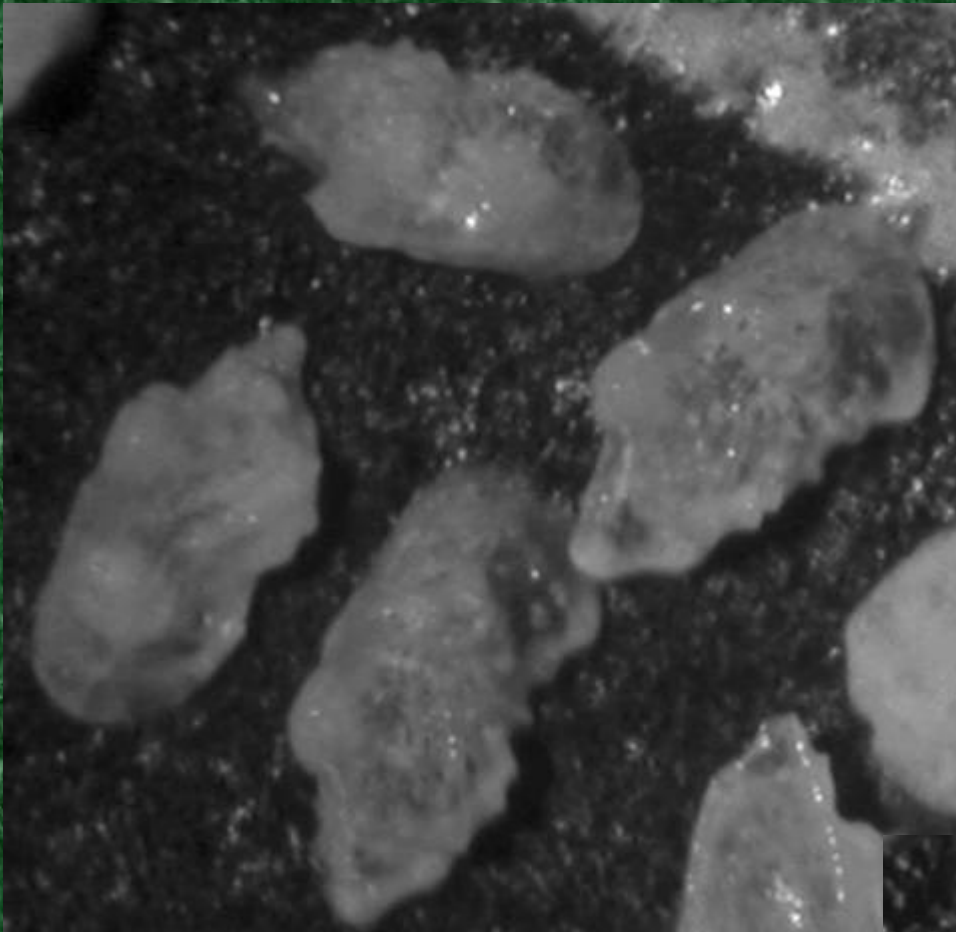


Jugosocythereis pannosa

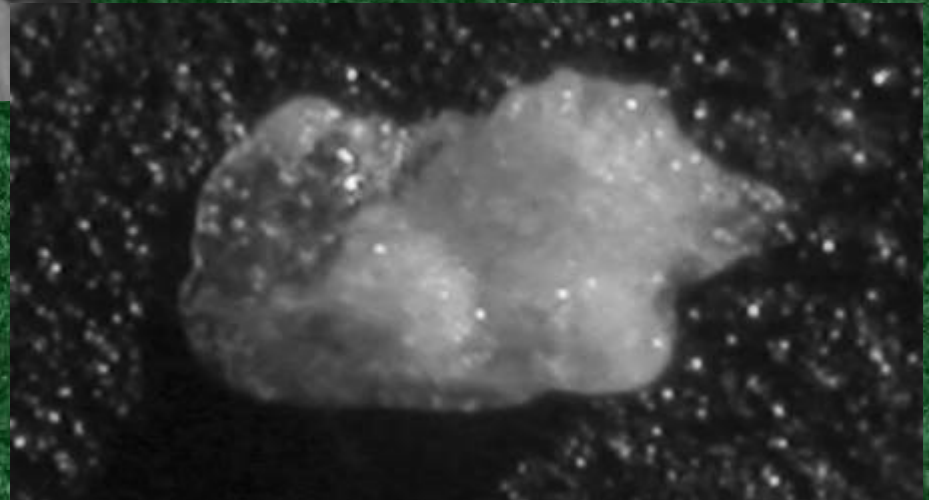


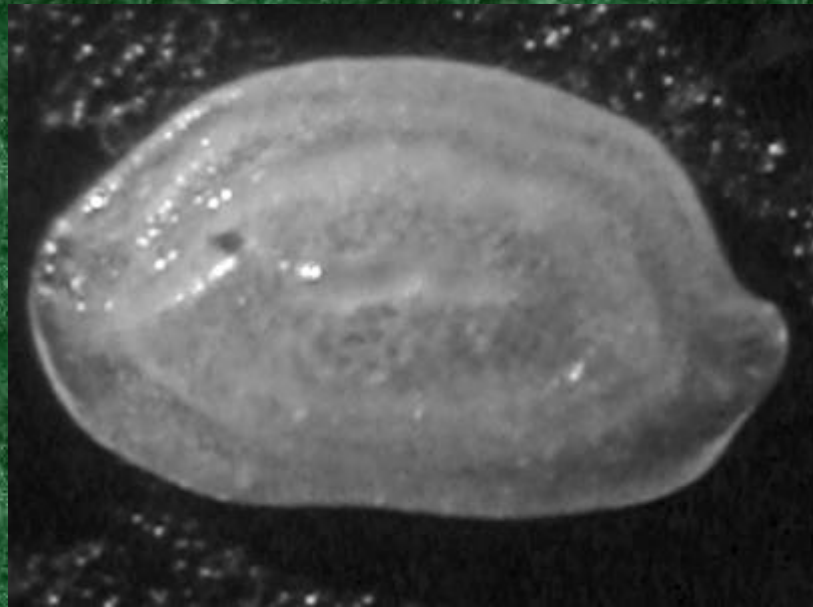
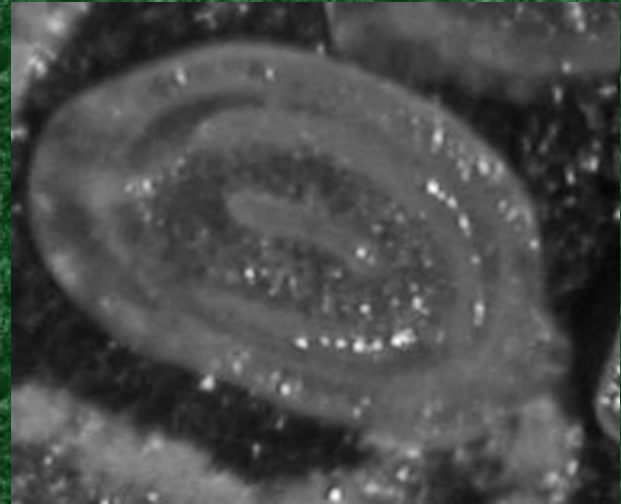
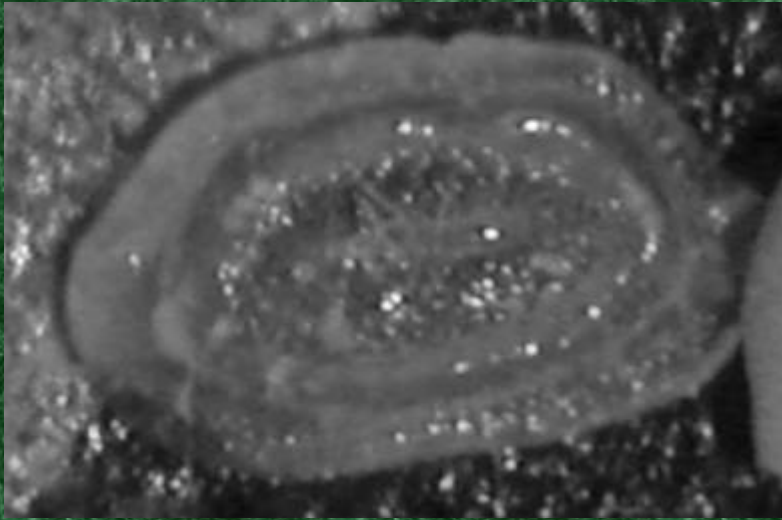


Cytherelloidea umbonata

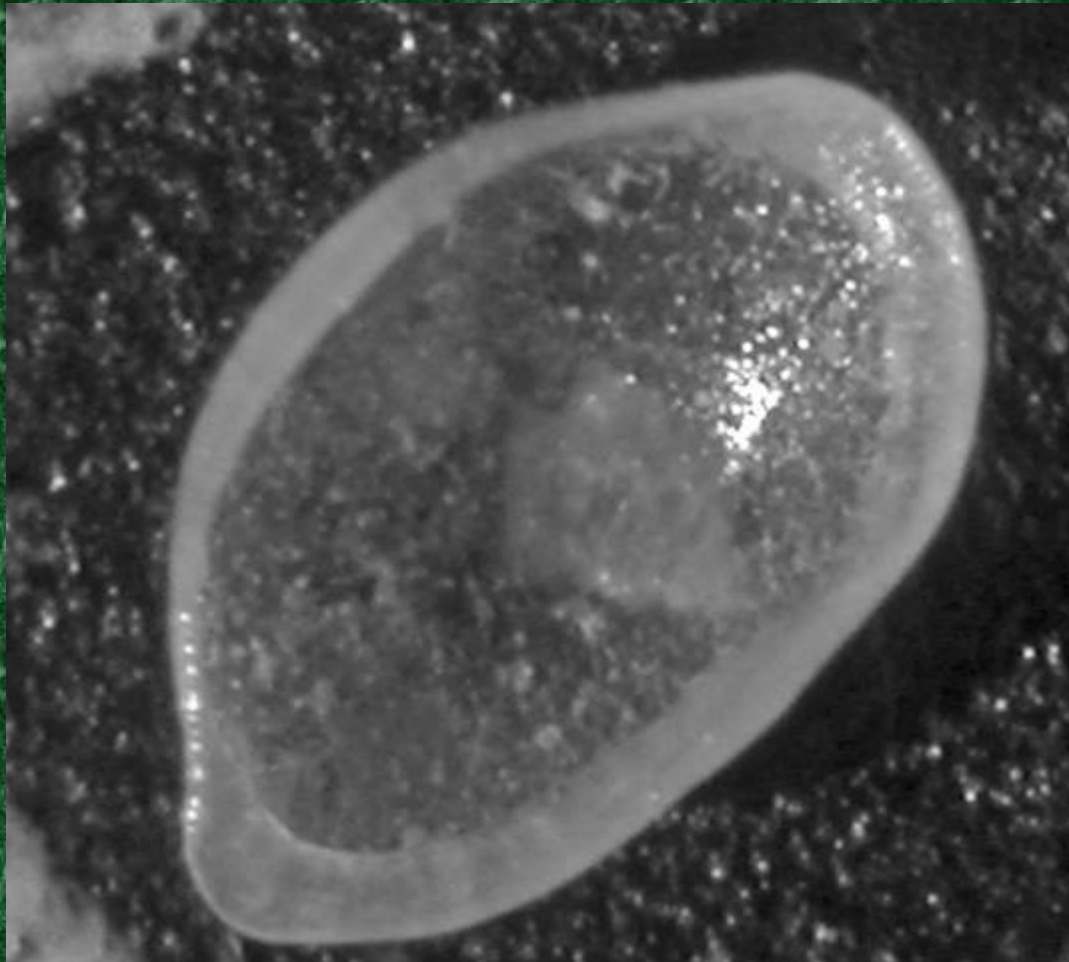


Paracytheridea cf.
tschoppi





Bairdoppilata (Glyptobairdia) coronata



Bairdoppilata (Birdoppilata) fasciata



Orionina sp.