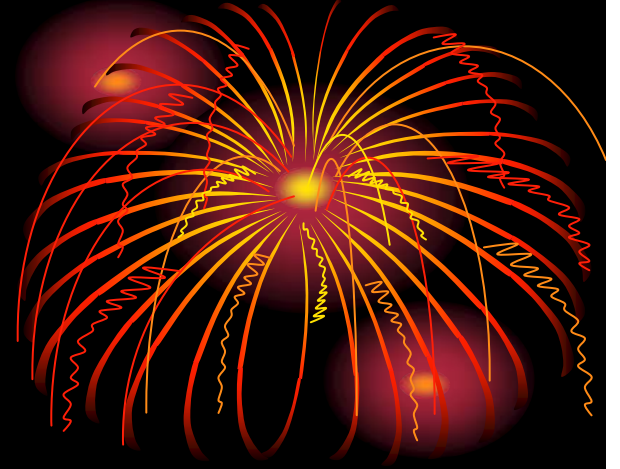




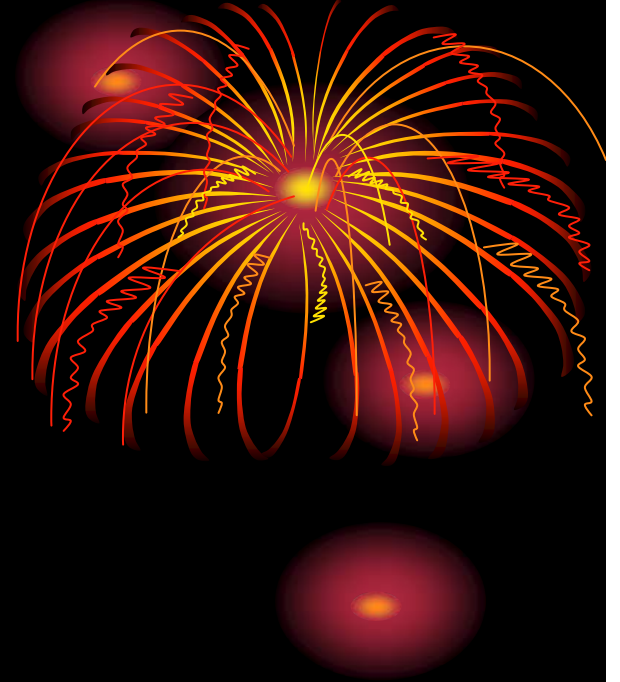
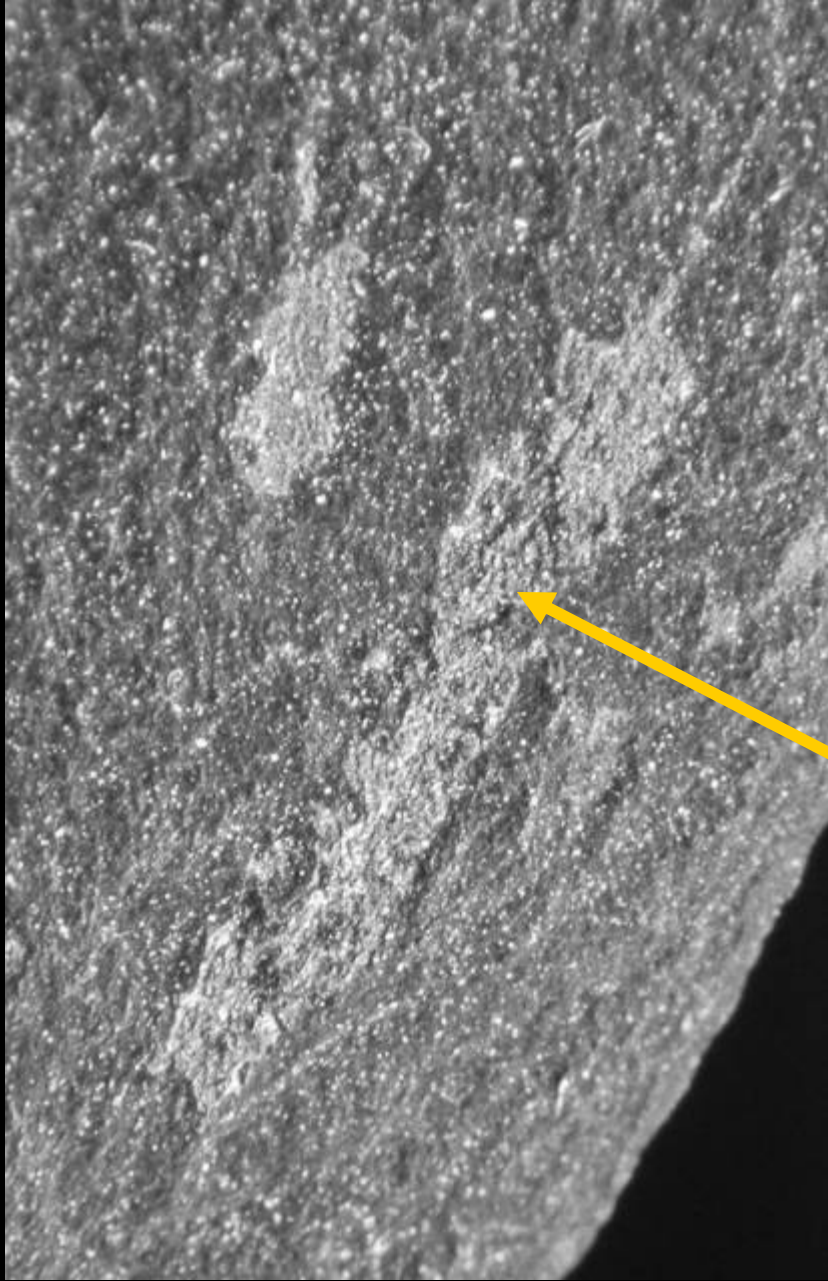
ORDOVICIAN
GRAPTOLITES,
CONODONTS &
CHITINOZOA

John Baker

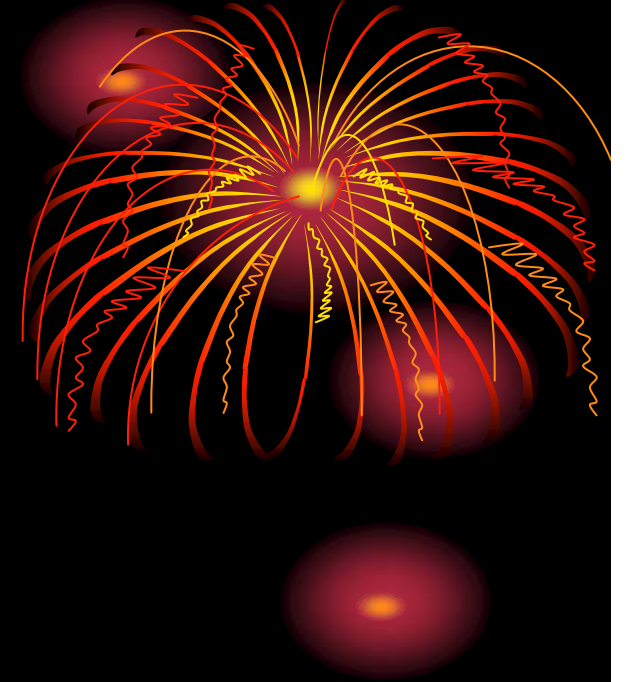
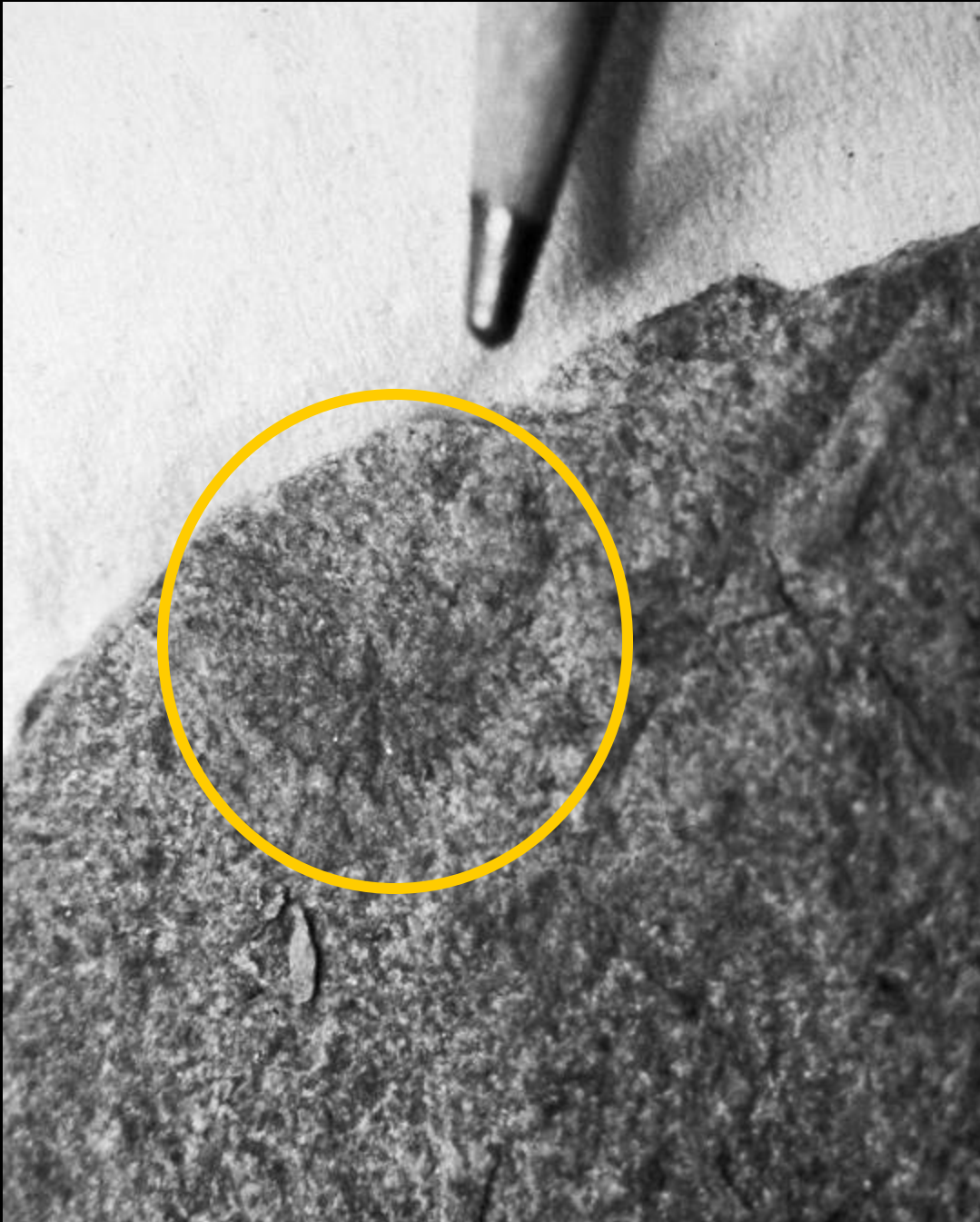


Graptolites

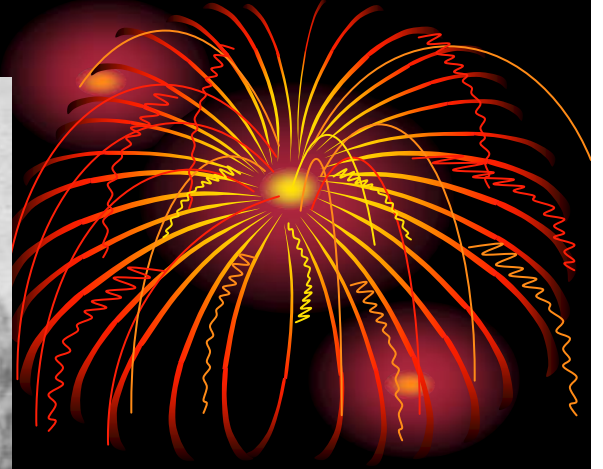
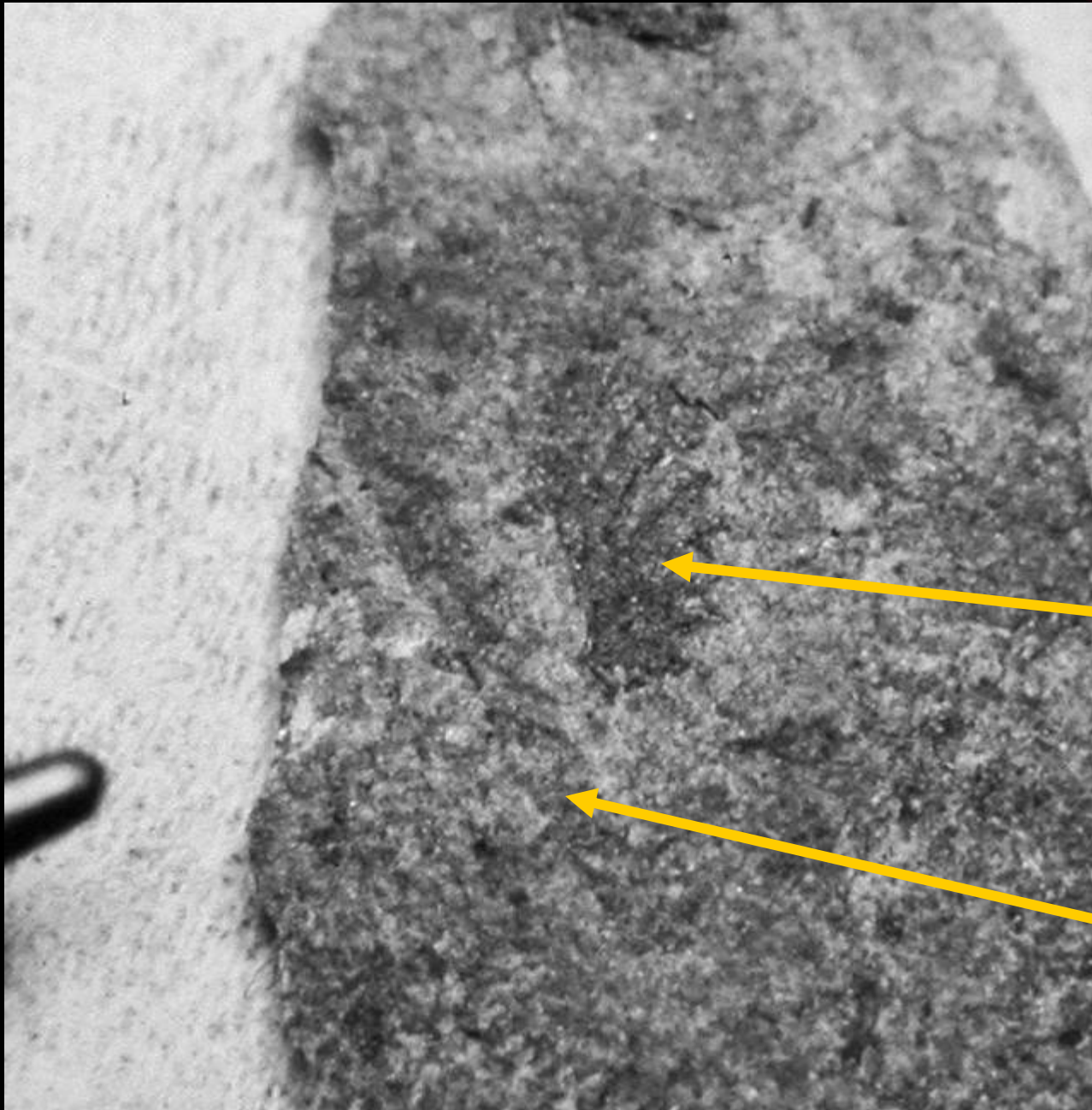
*(Jutland Klippe- Martinsburg
Fm. - US Rte 78, Warren County,
NJ)*



GLYPTOGRAPTUS SP.

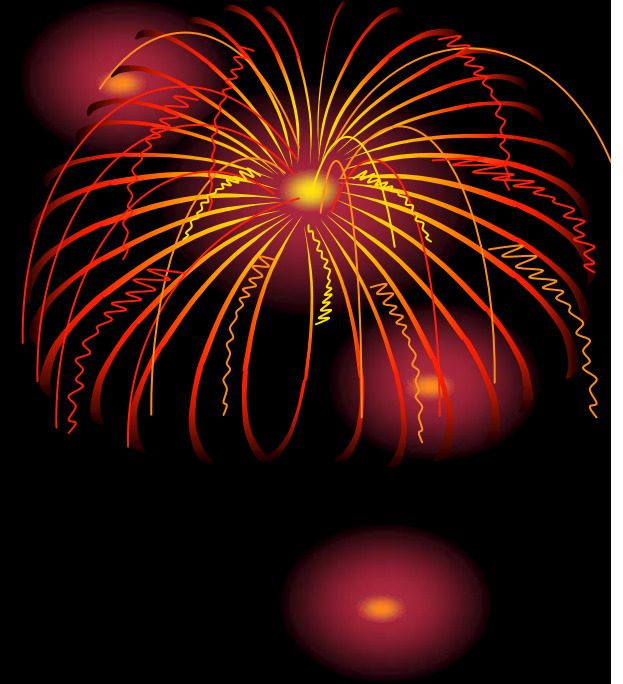
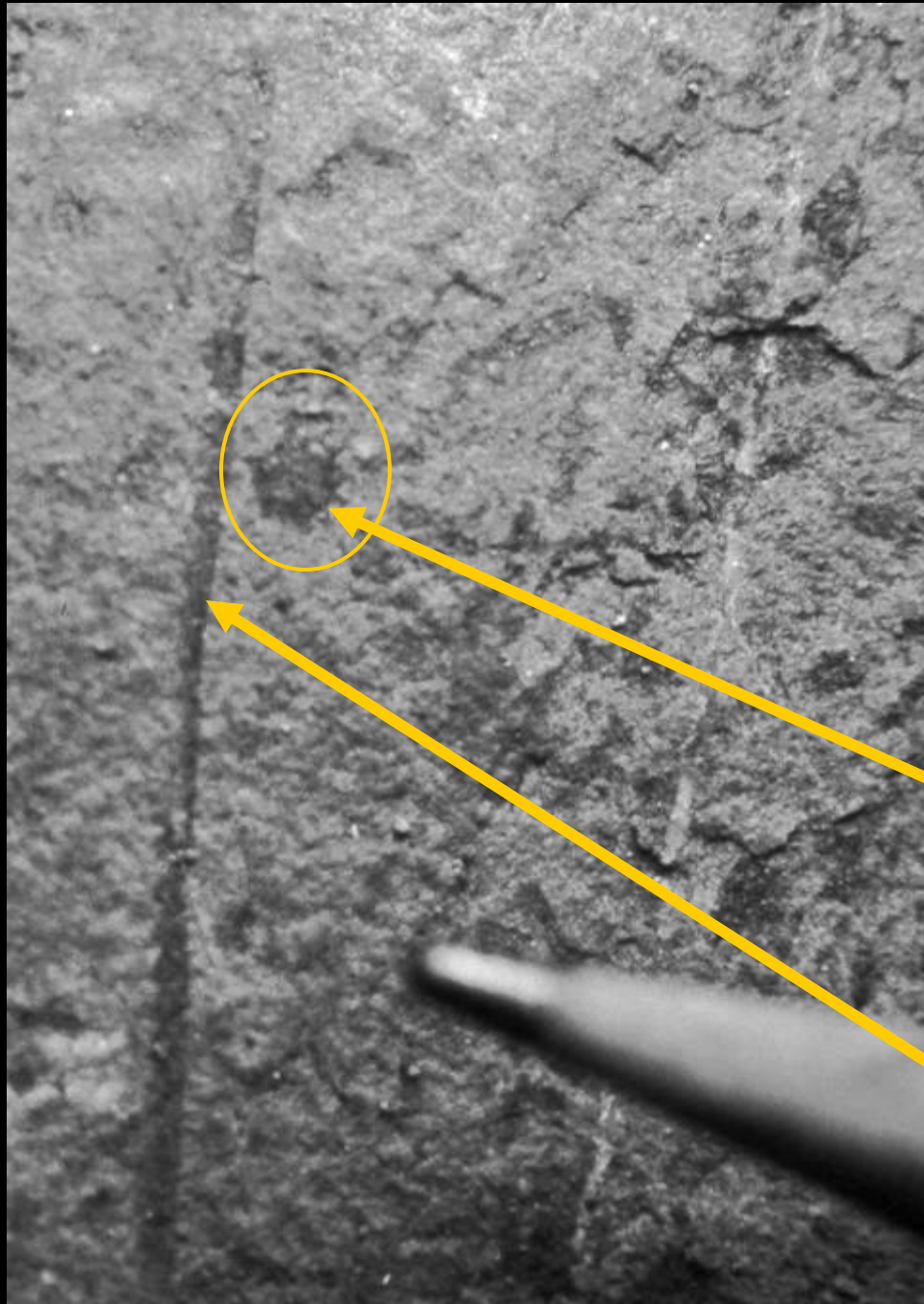


PHYLLOGRAPTUS SP.



PHYLLOGRAPTUS SP.

CLIMACOGRAPTUS SP.

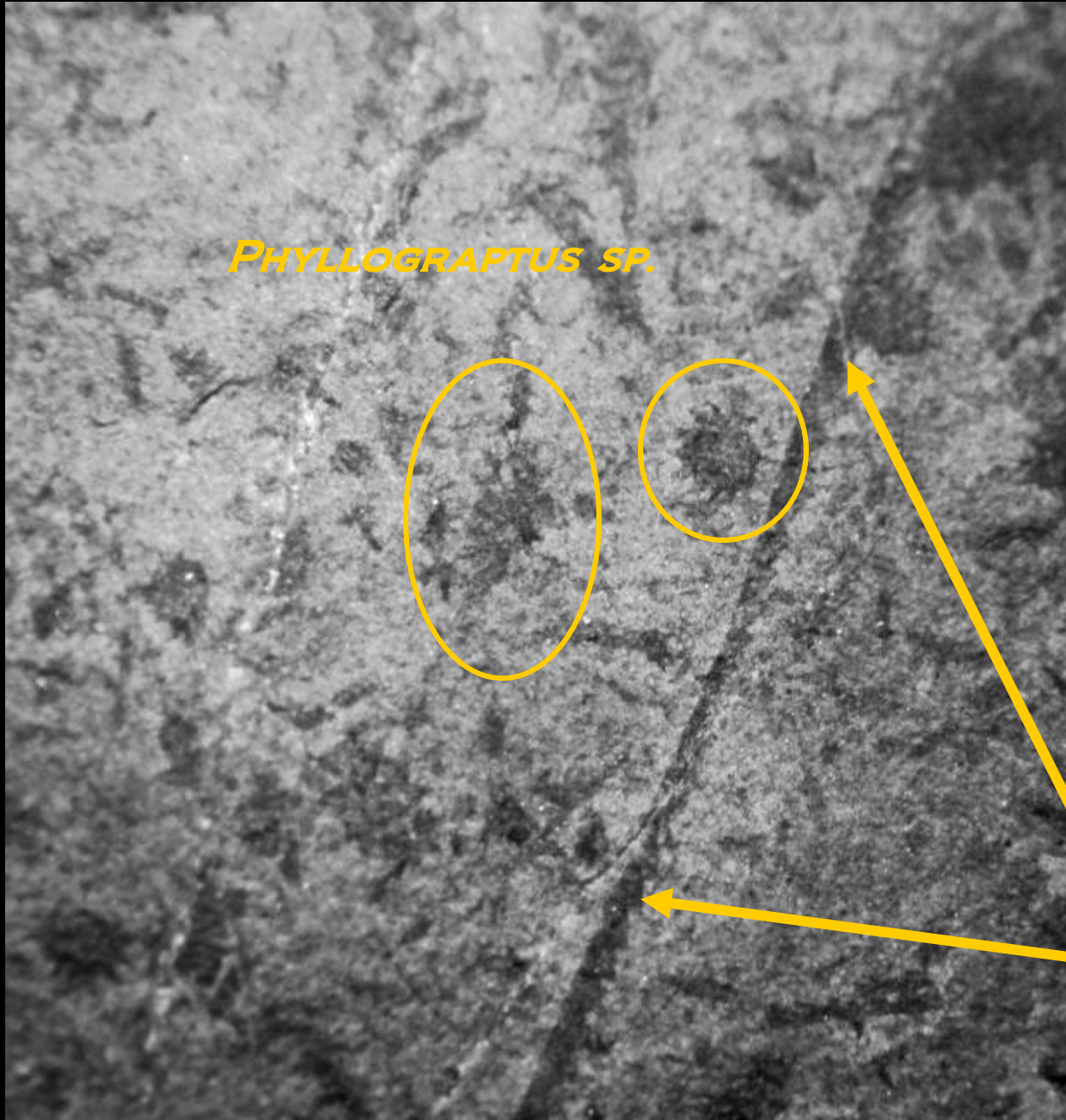


PHYLLOGRAPTUS SP.

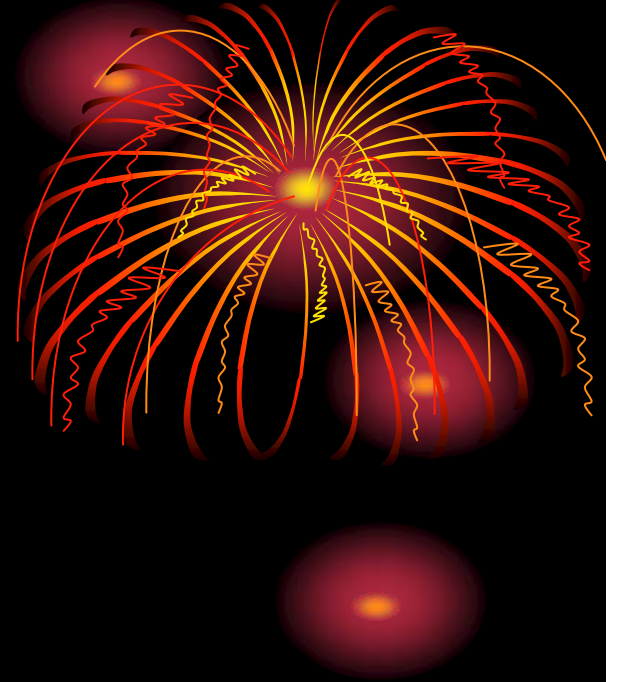
DIDYMORAPTUS SP.



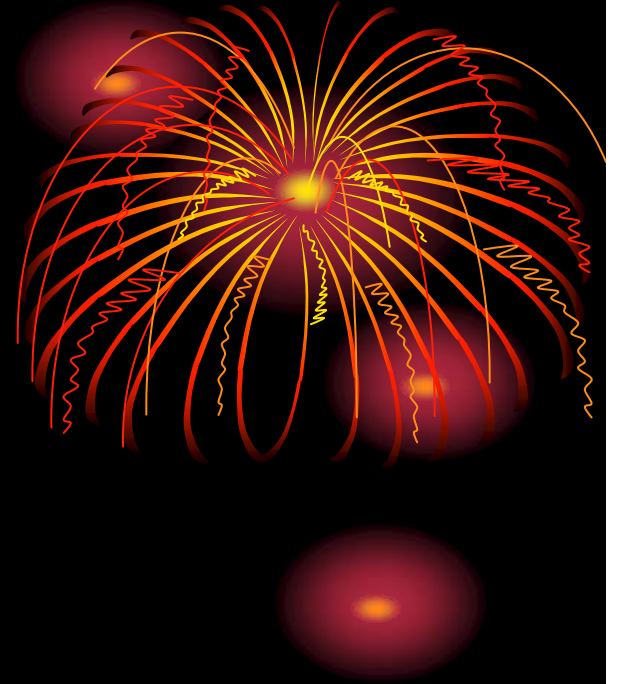
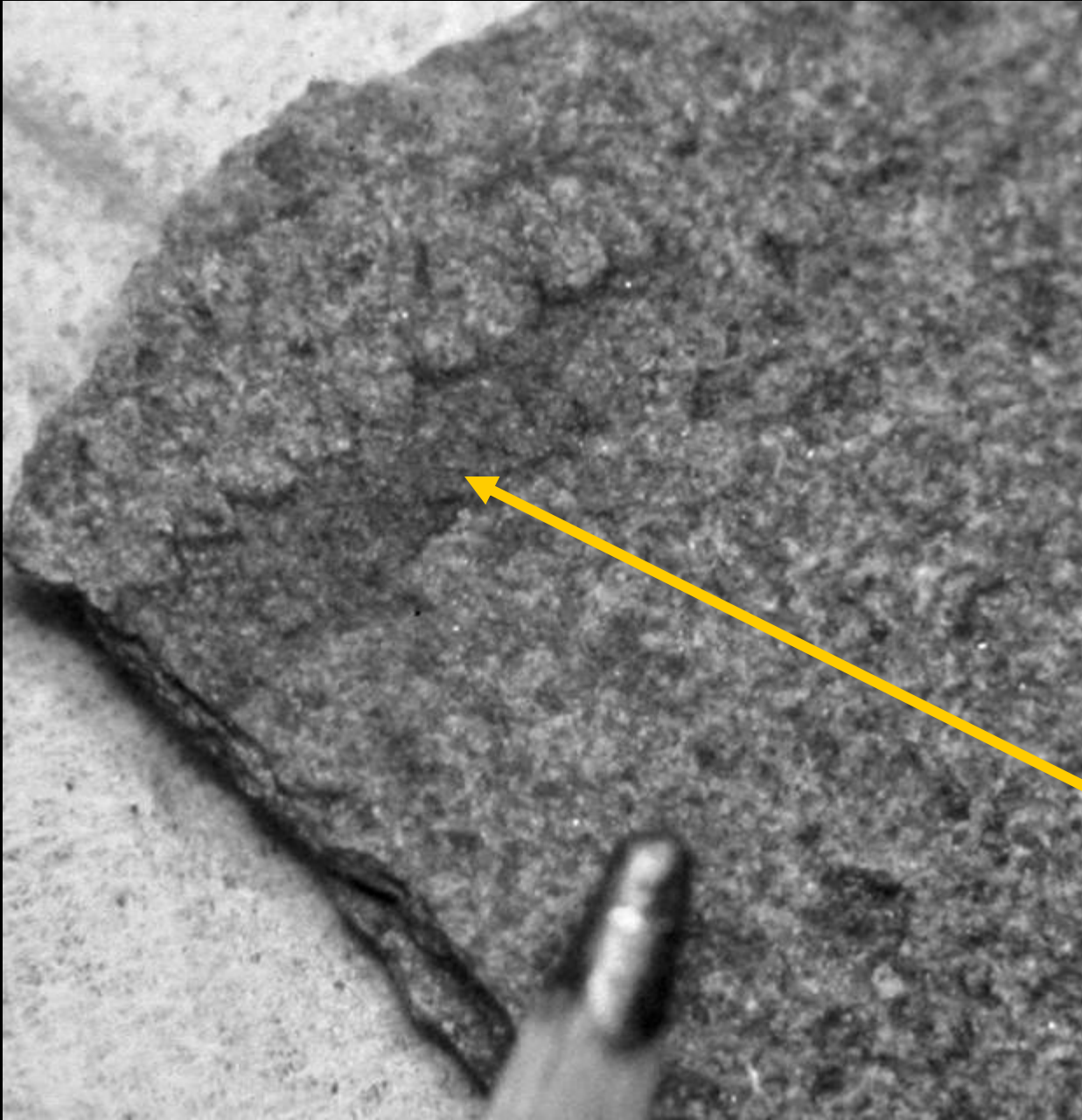
CLIMACOGRAPTUS SP.



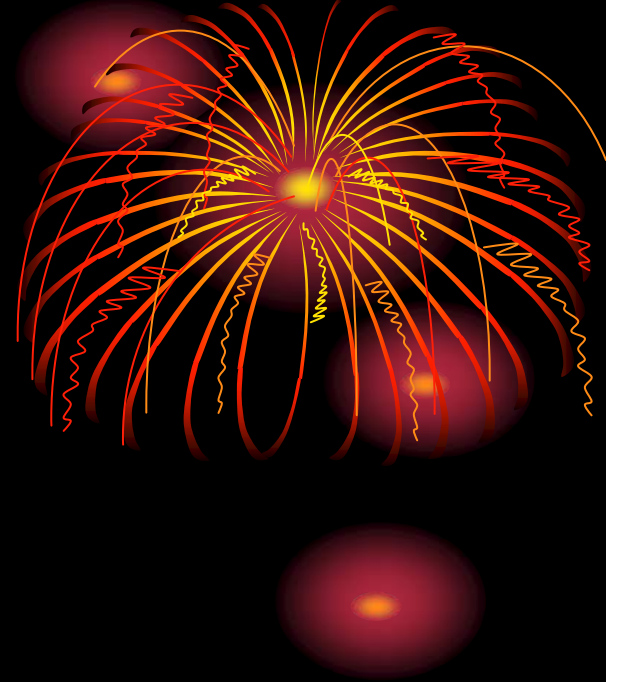
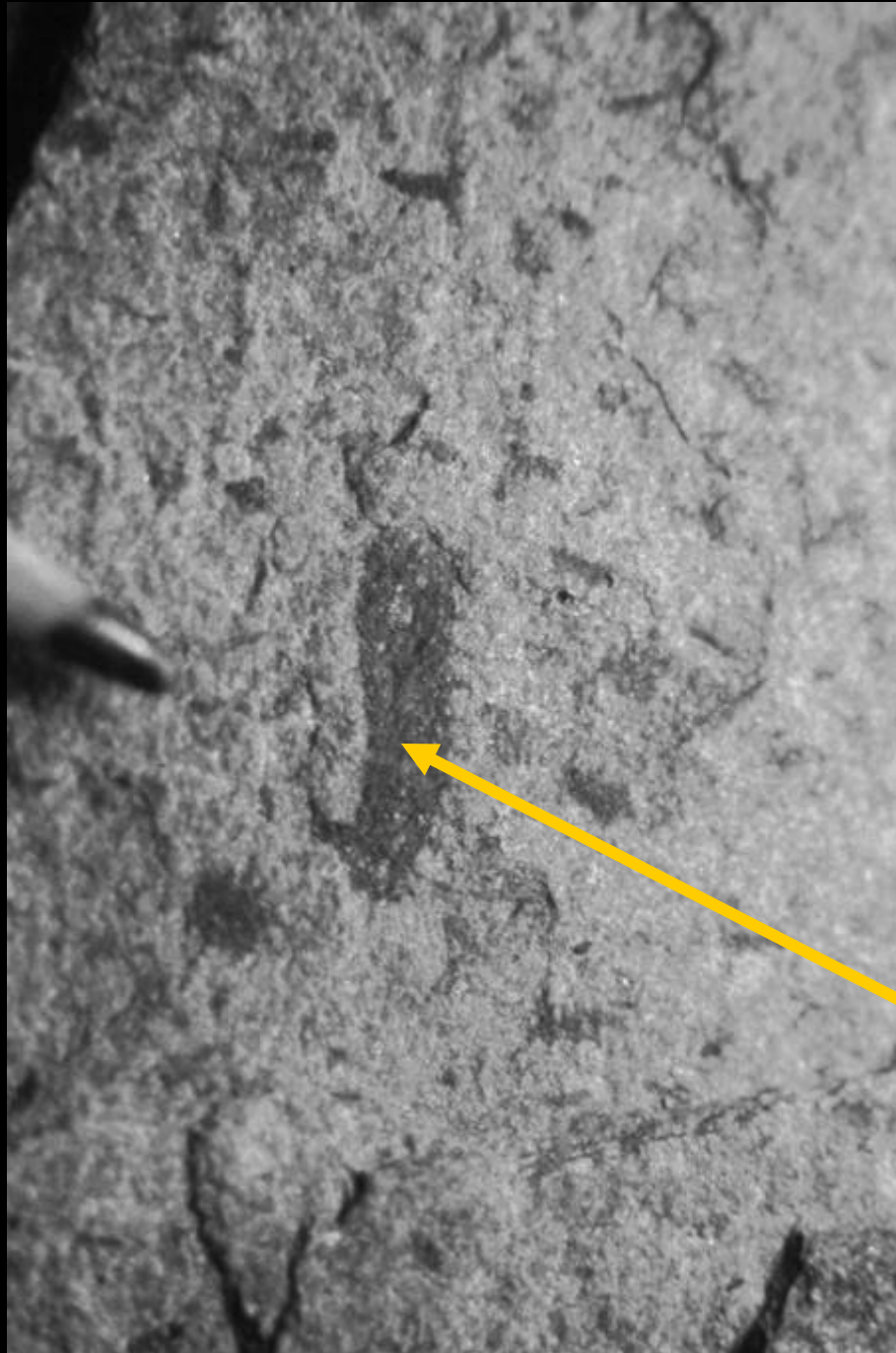
PHYLLOGRAPTUS SP.



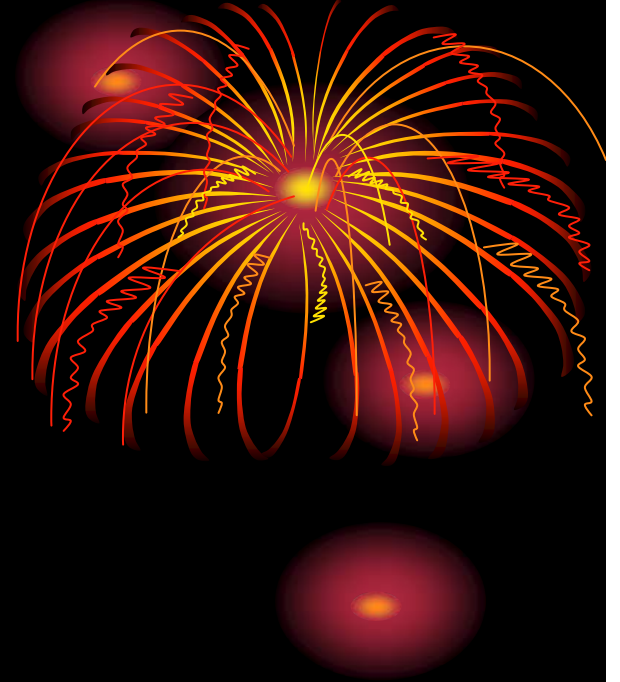
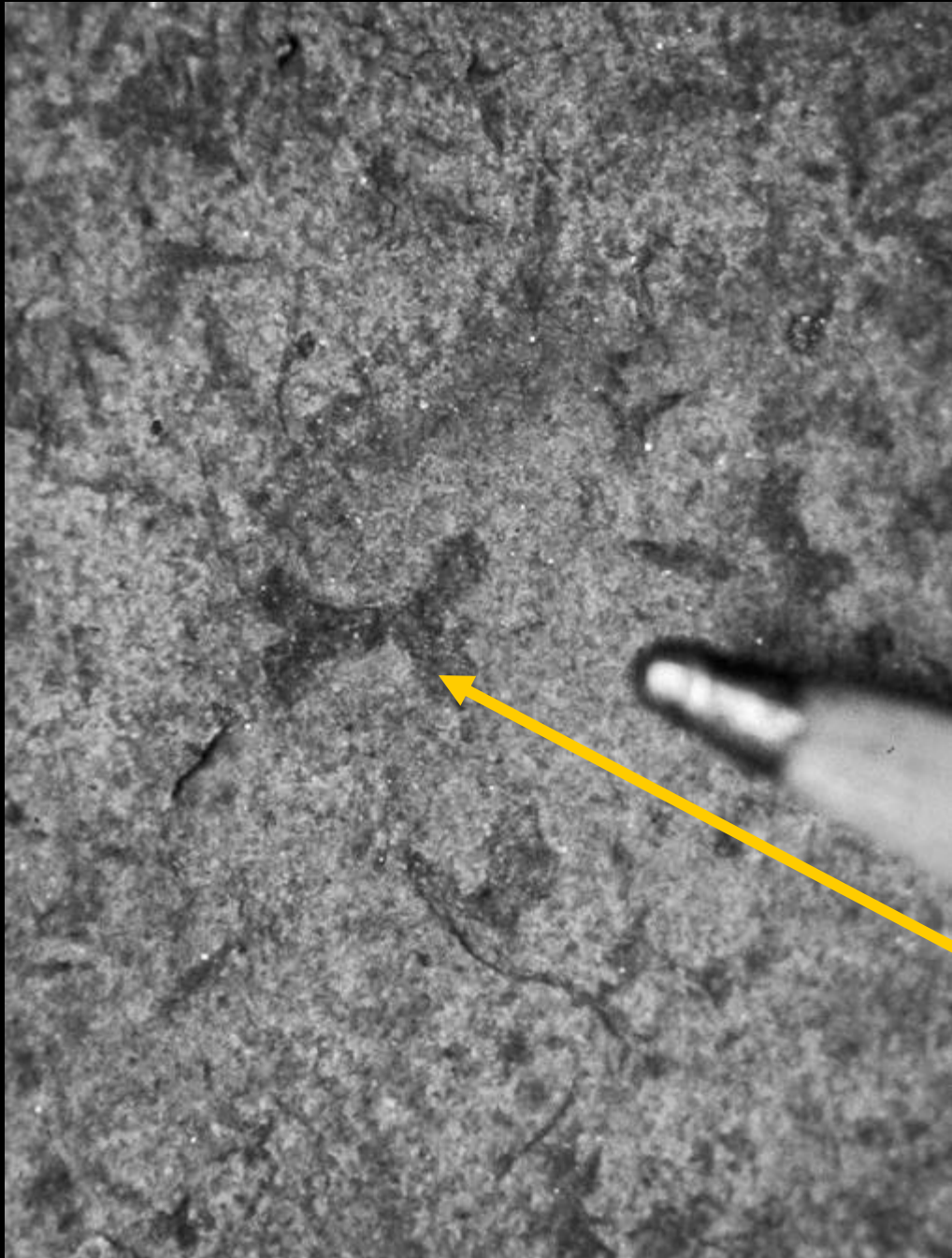
*DIDYMOGRAPTUS
SP.*



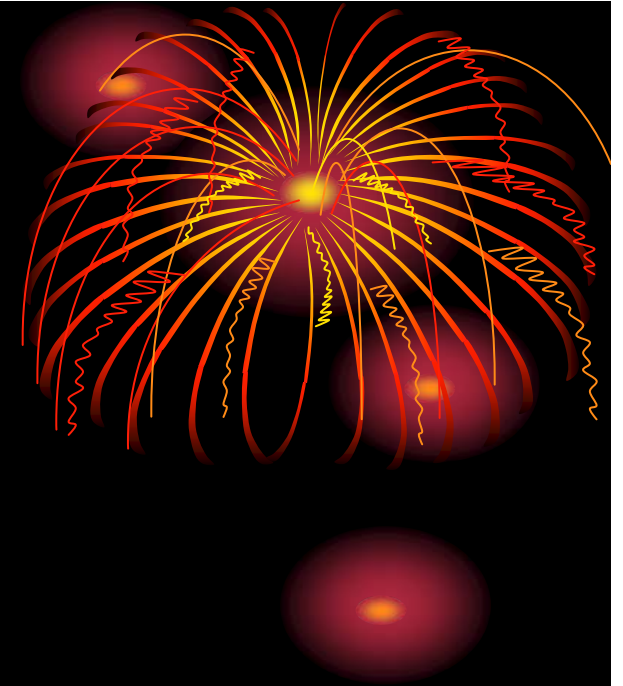
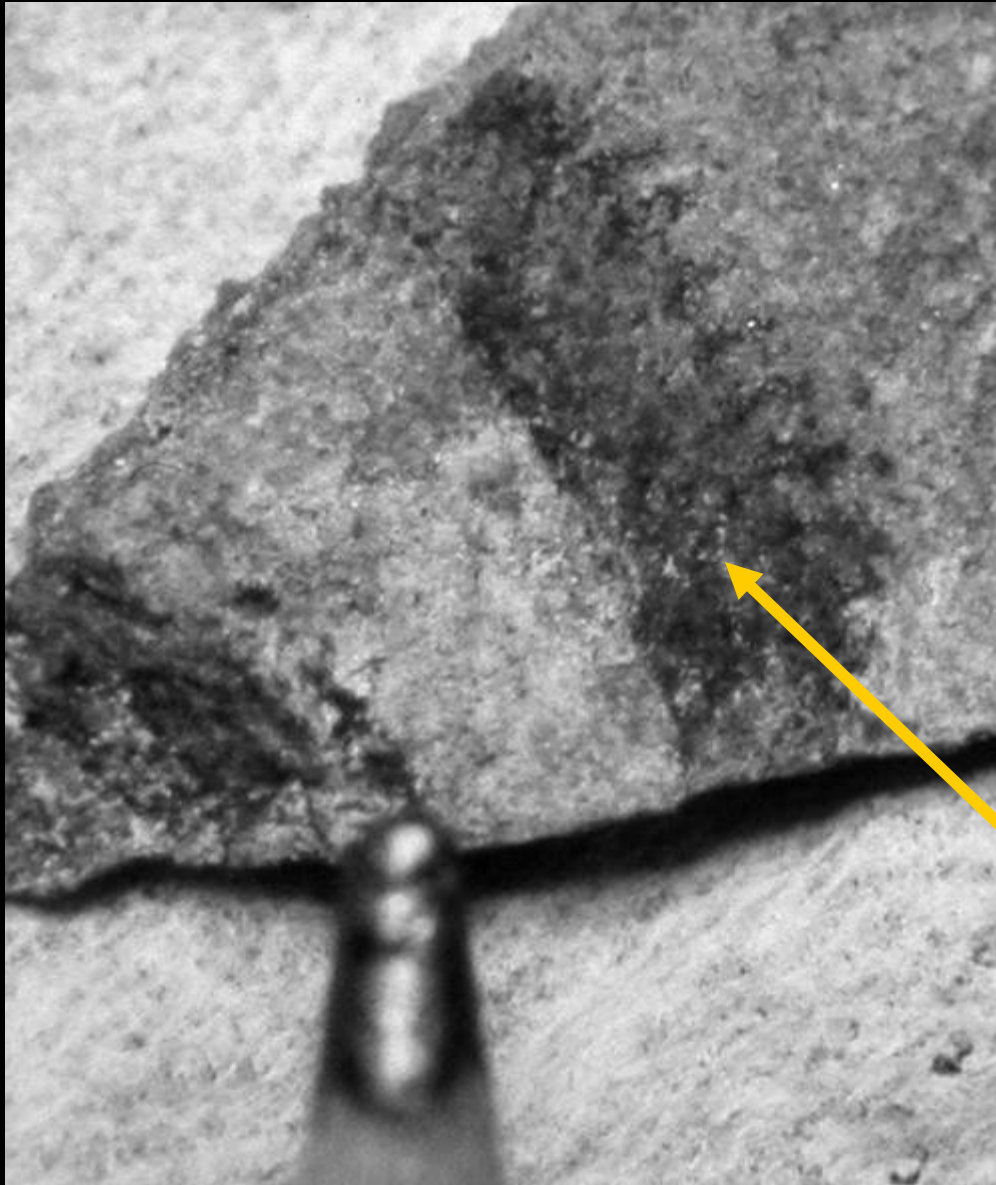
TETRAGRAPTUS SP.



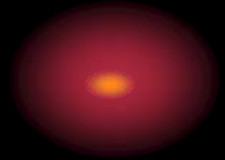
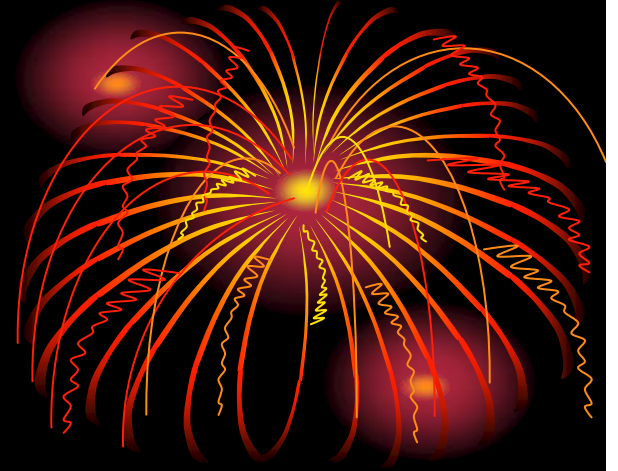
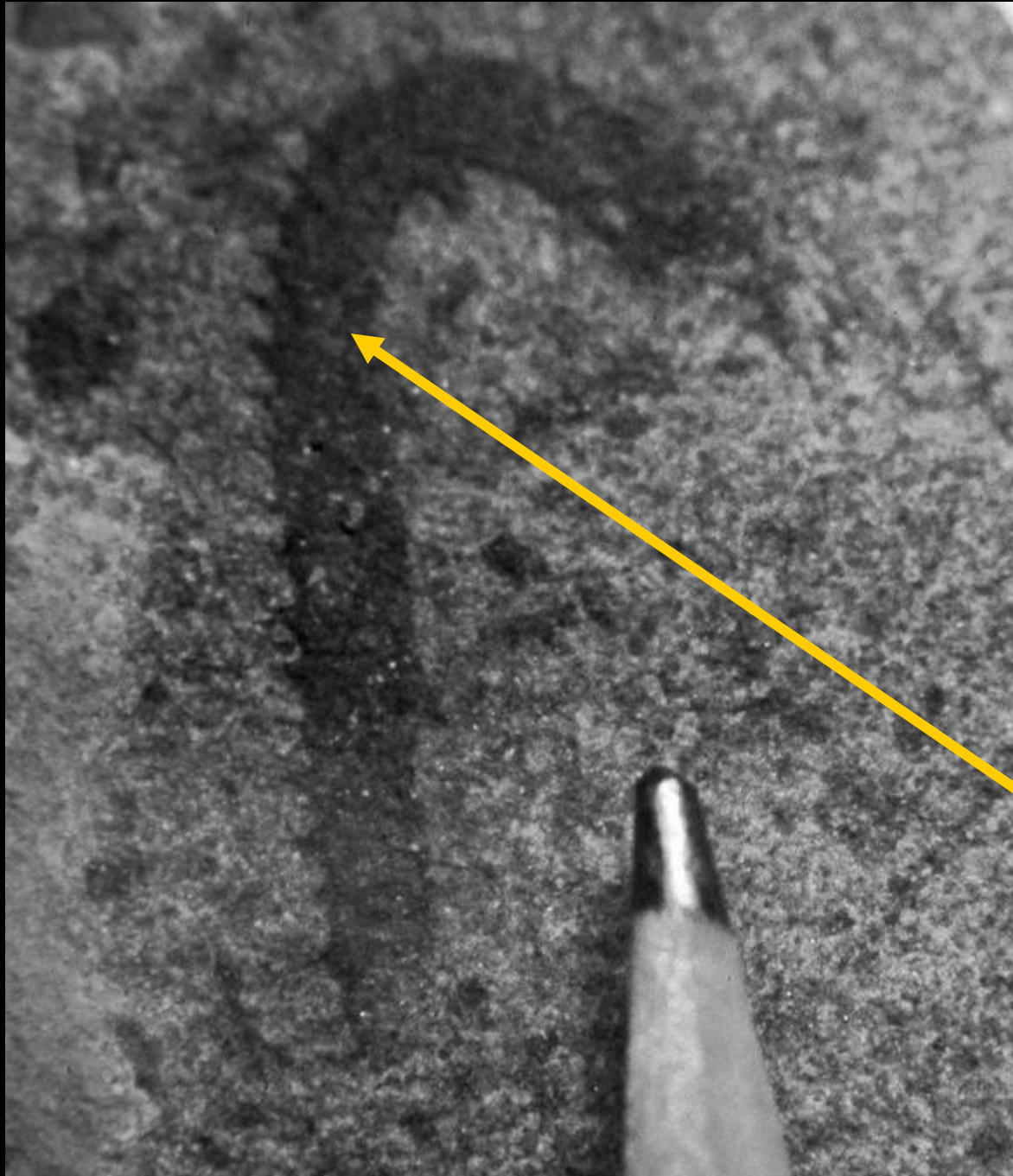
TETRAGRAPTUS SP.



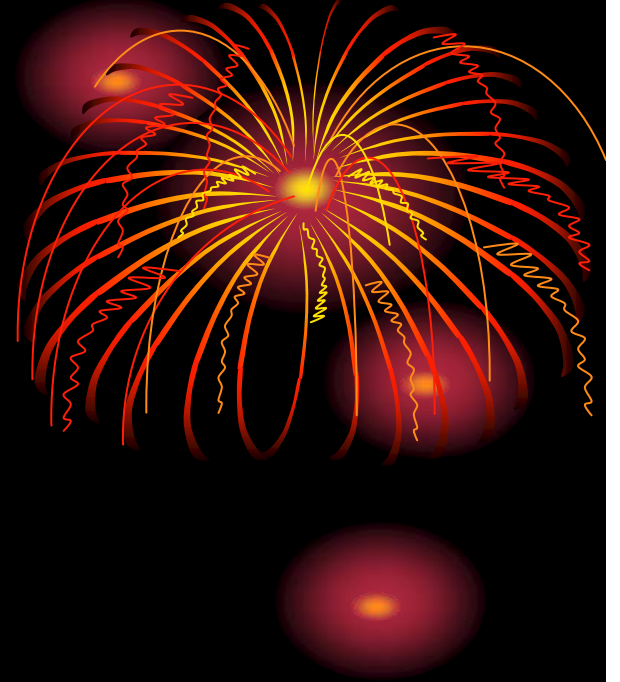
TETRAGRAPTUS SP.



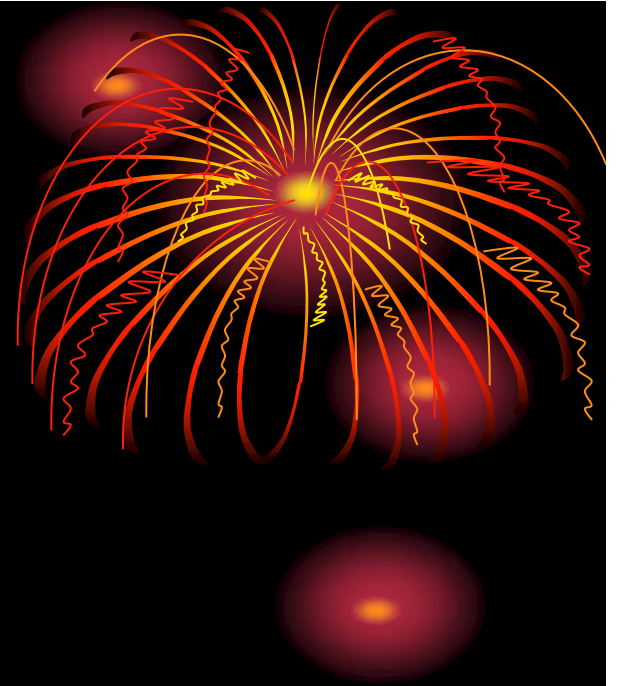
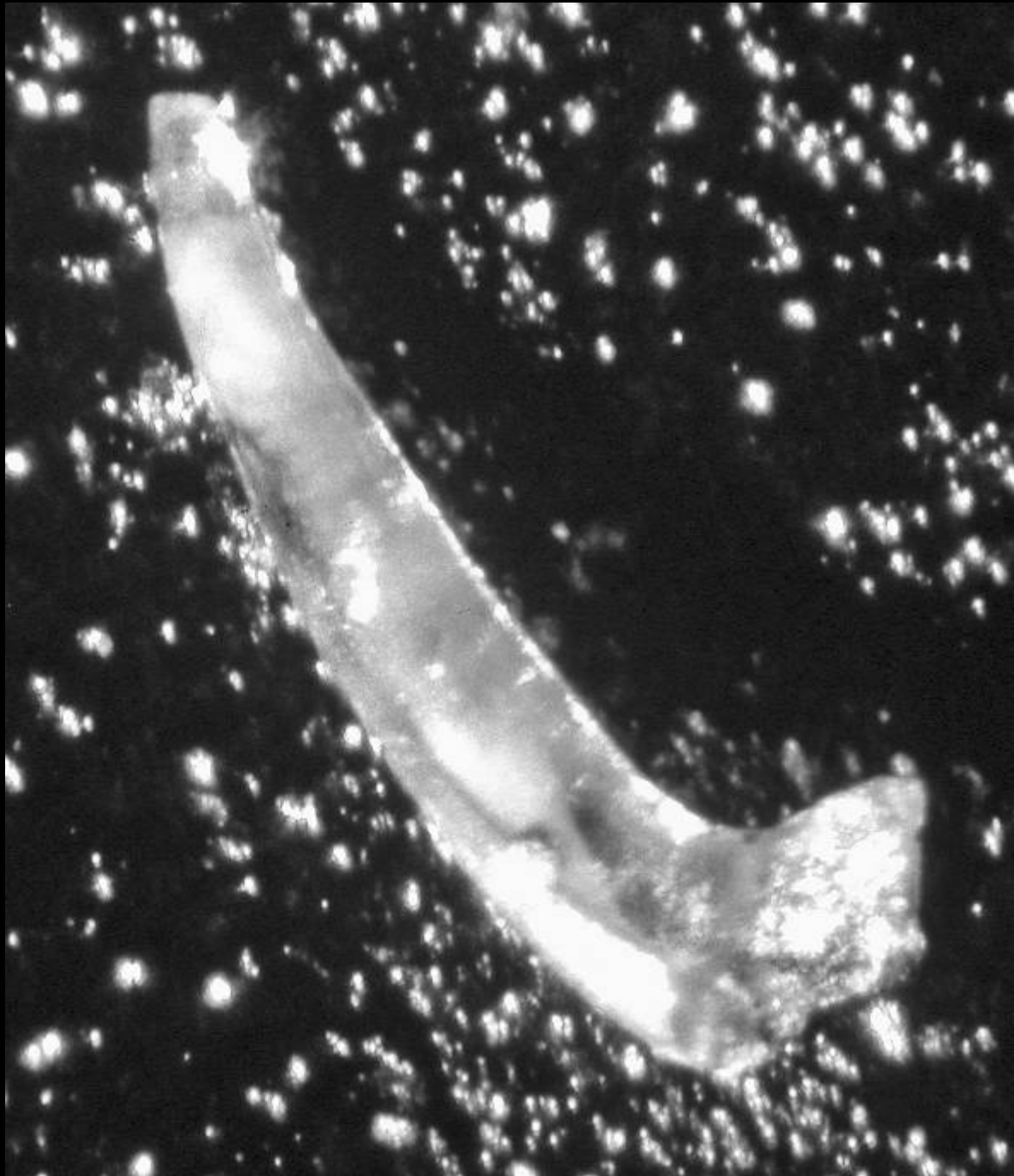
TETRAGRAPTUS SP.



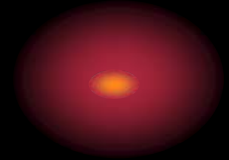
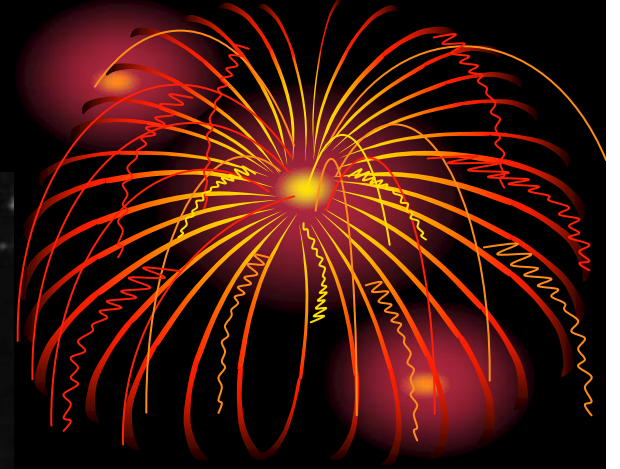
TETRAGRAPTUS SP.



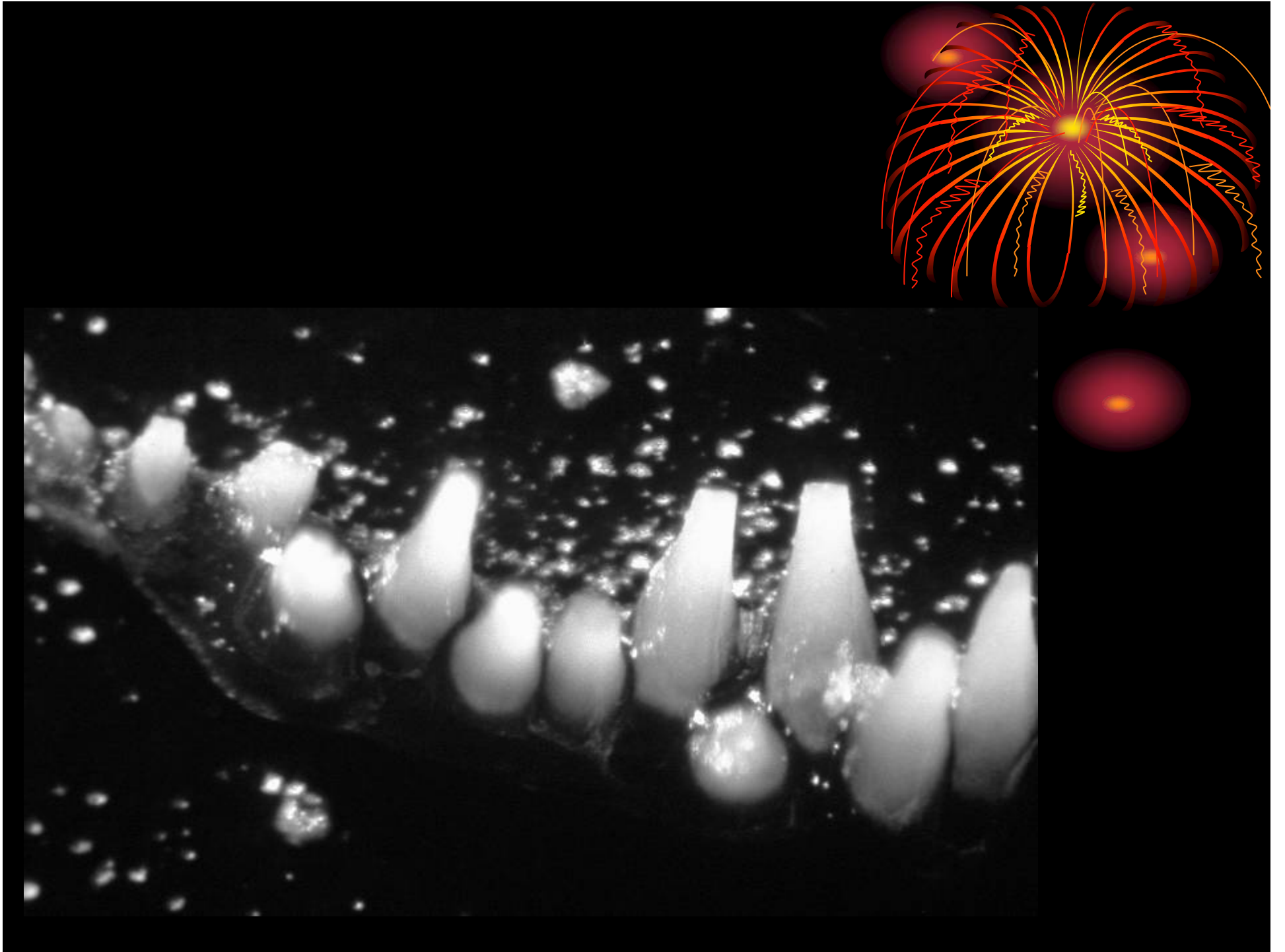
Conodonts



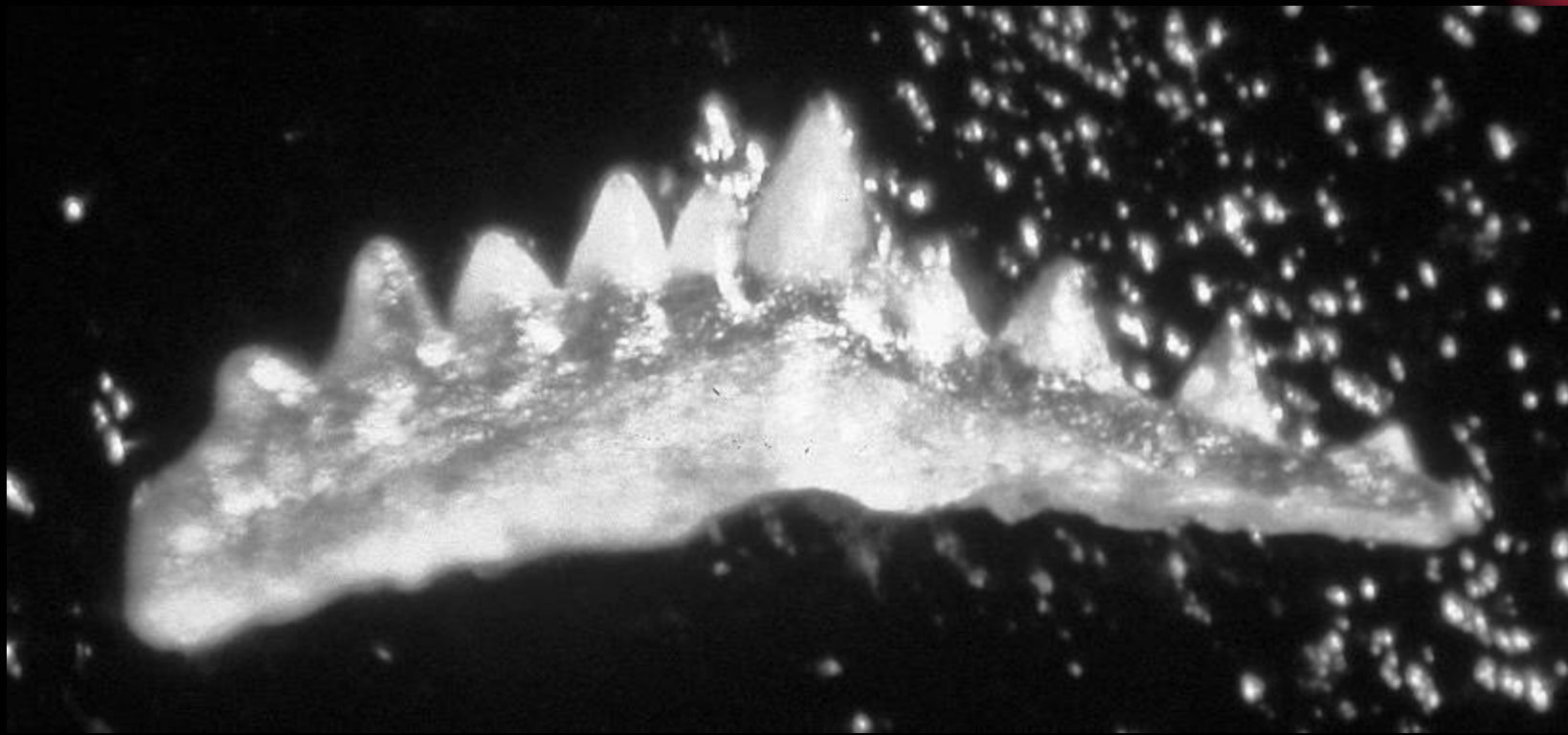
Paltodus sp



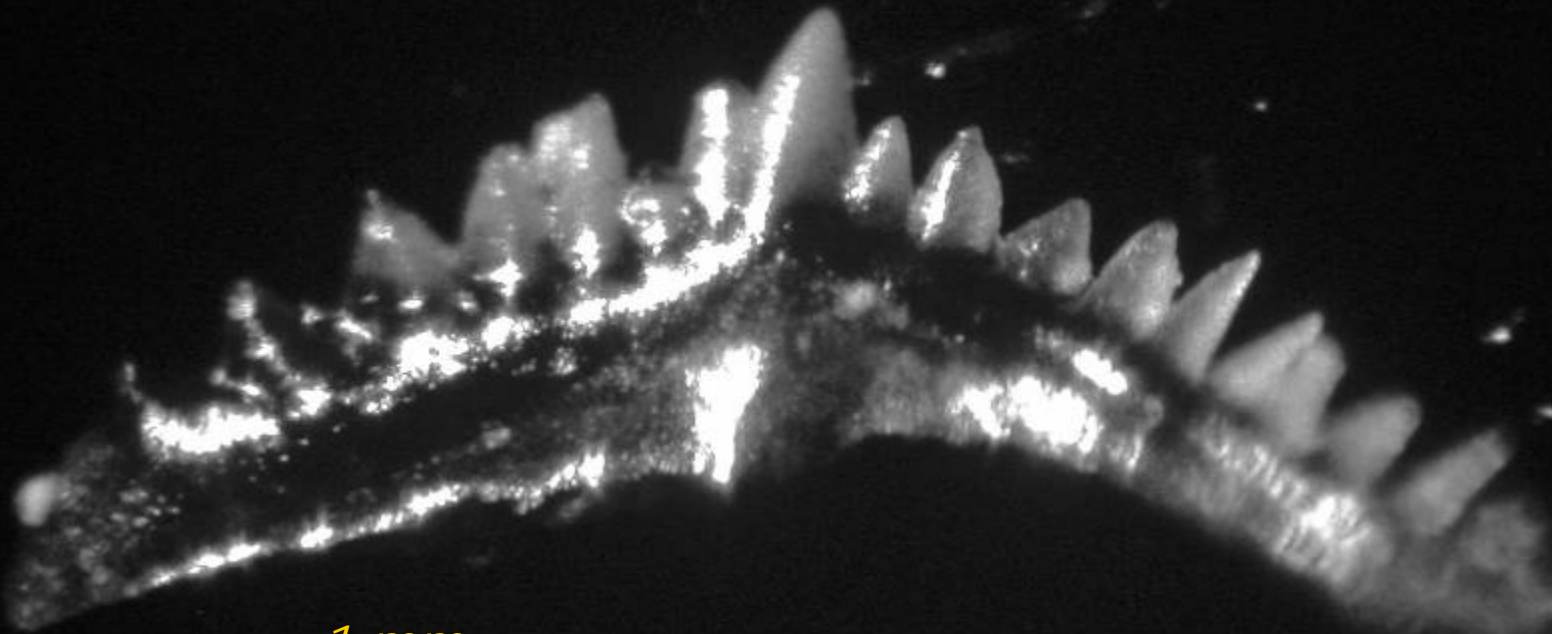
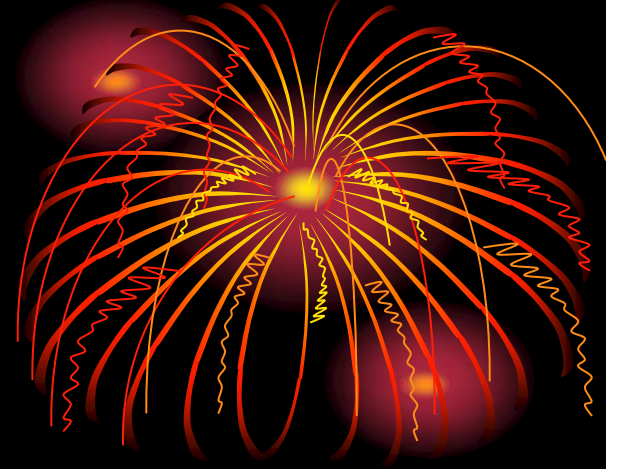
Prionodus sp



Aphelognathus sp

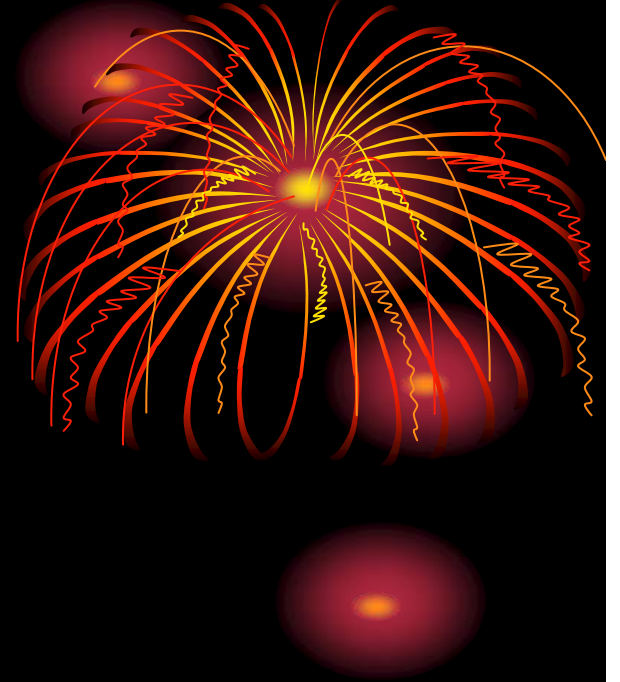


Rhodesognathus sp



1 mm

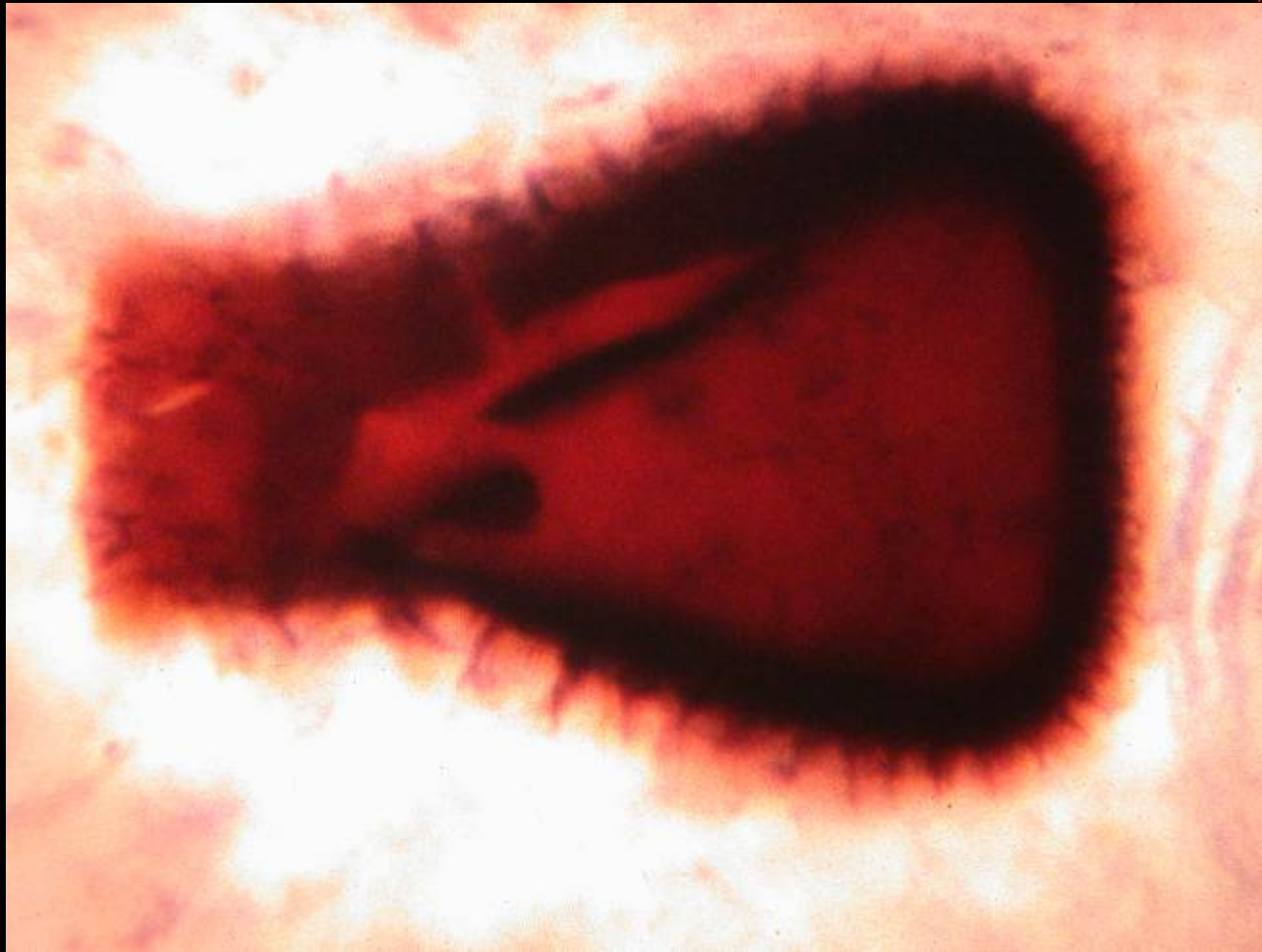
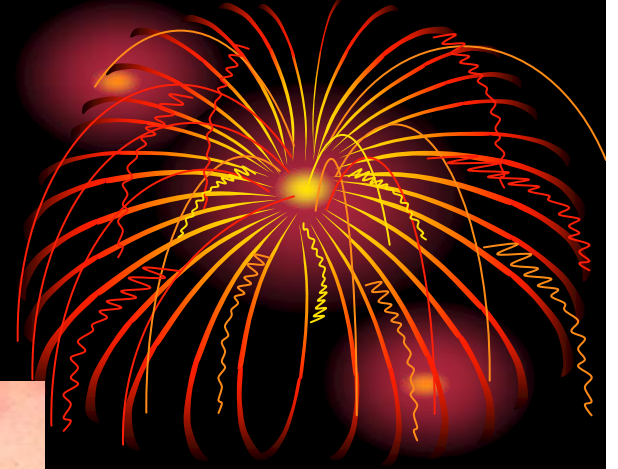




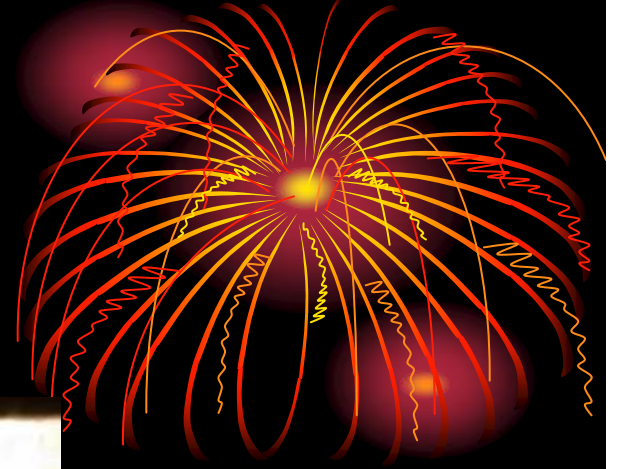
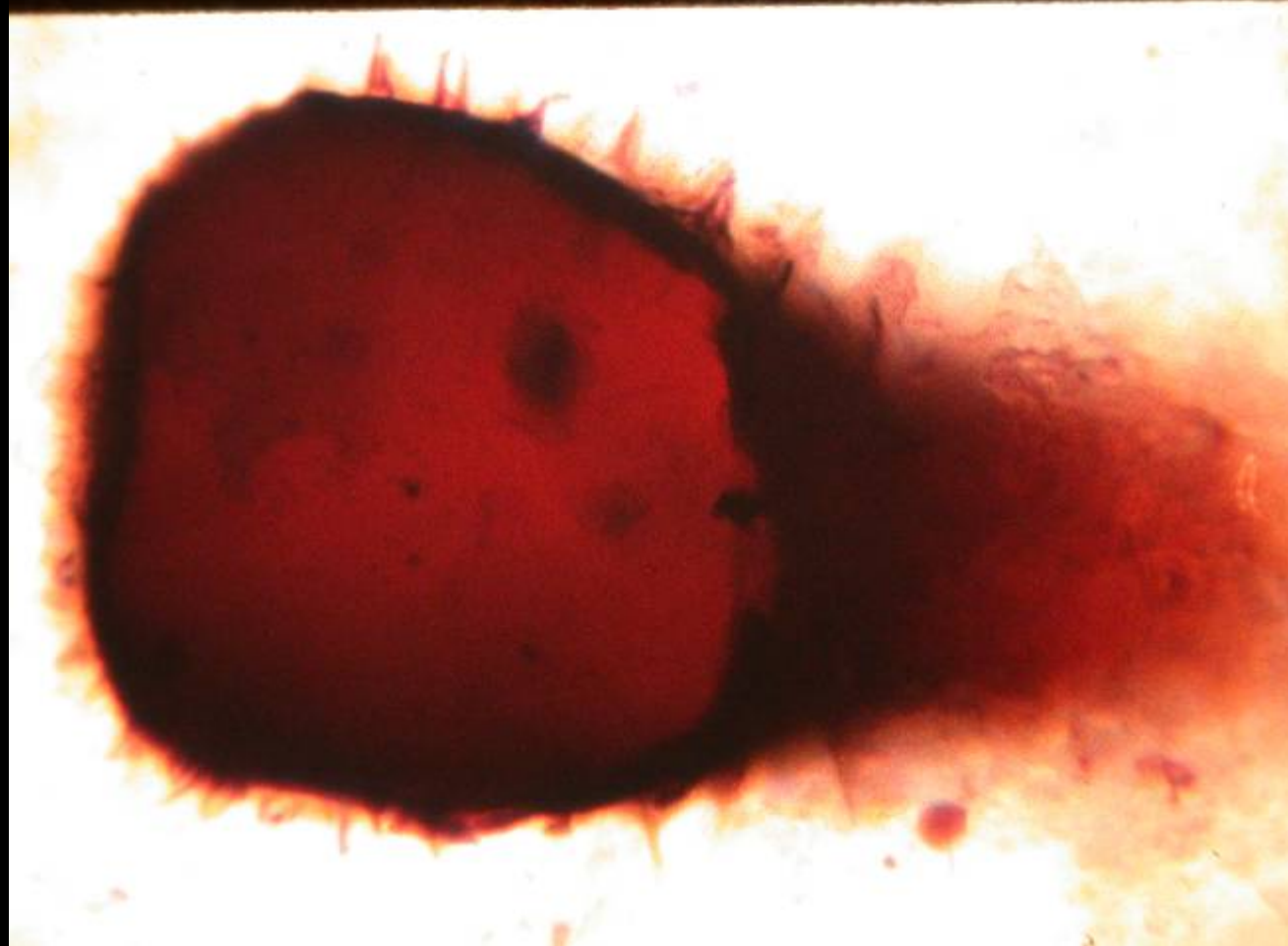
Chitinozoa

(Oklahoma- Bromide Fm., Simpson Gp.)

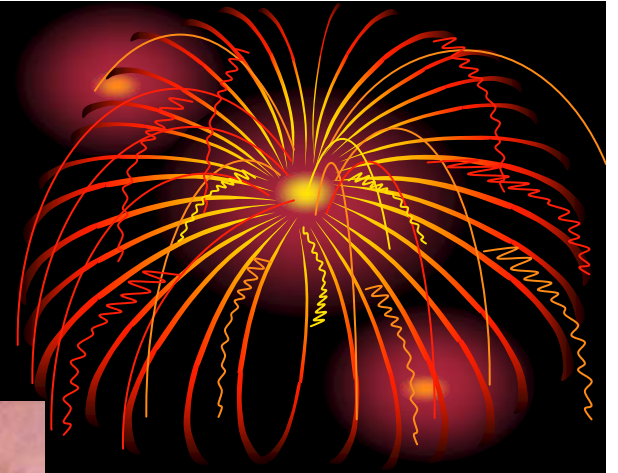
500 μm



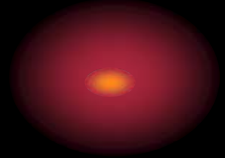
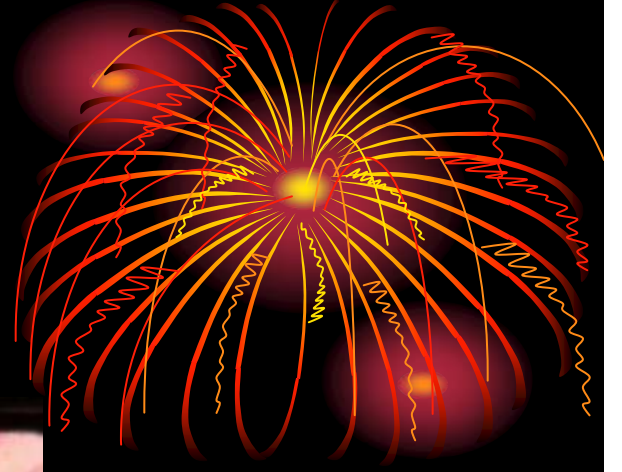
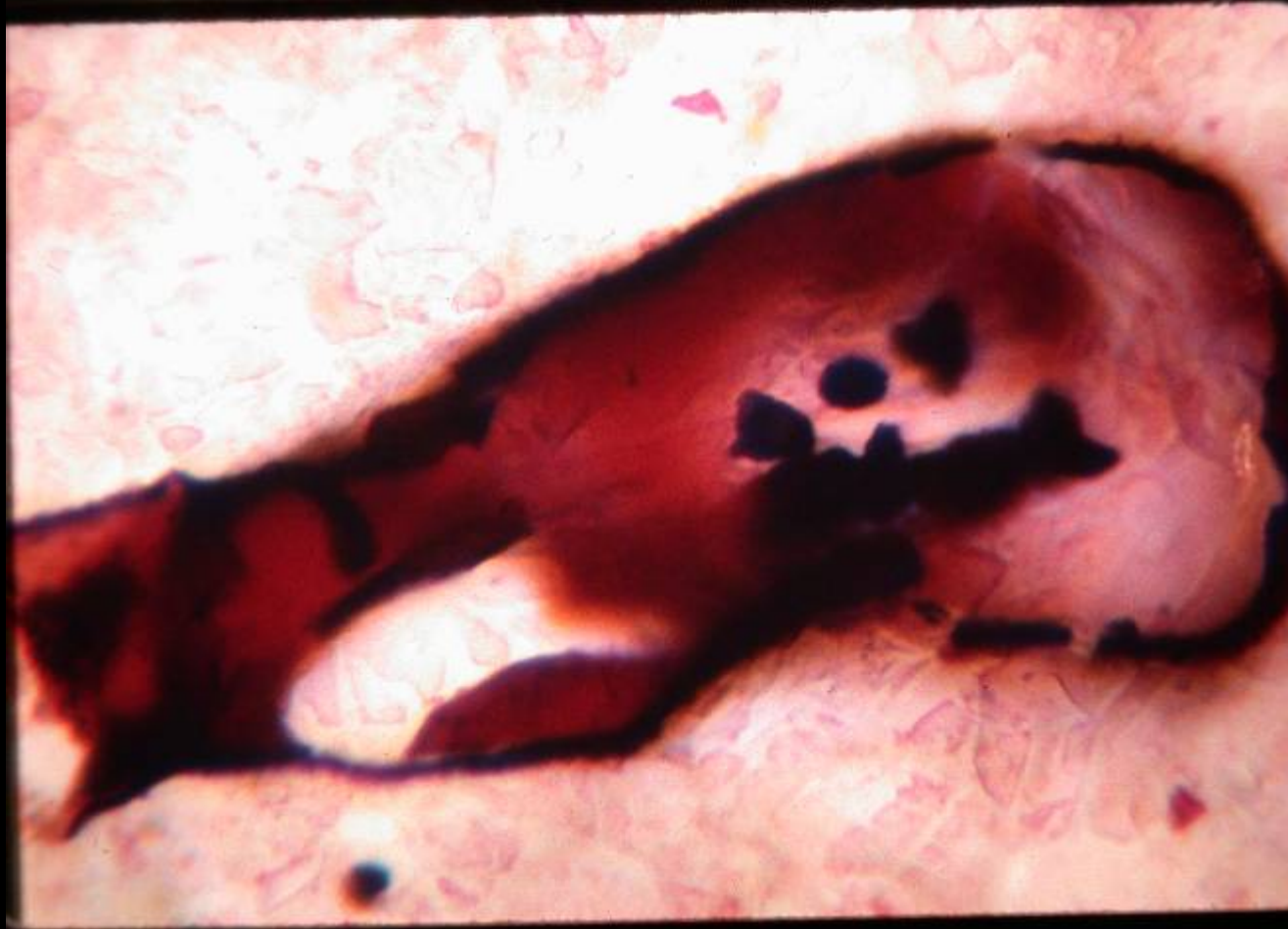
Conochitina-
Herochitina
complex

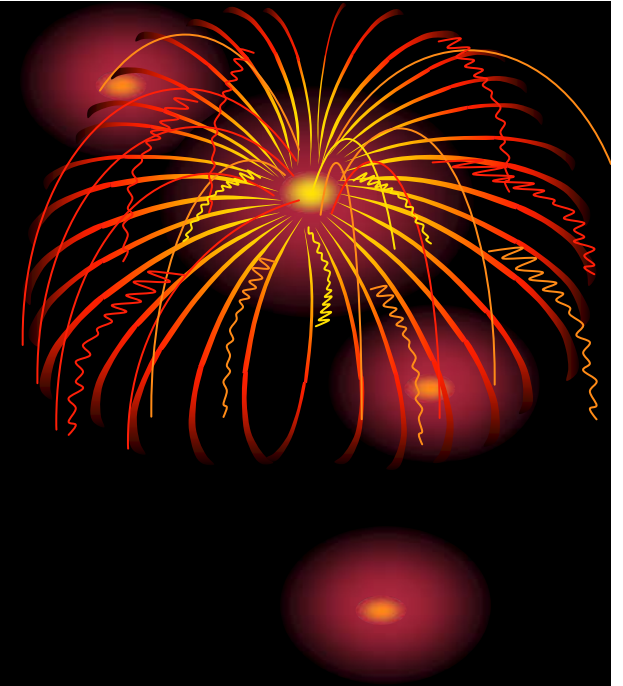
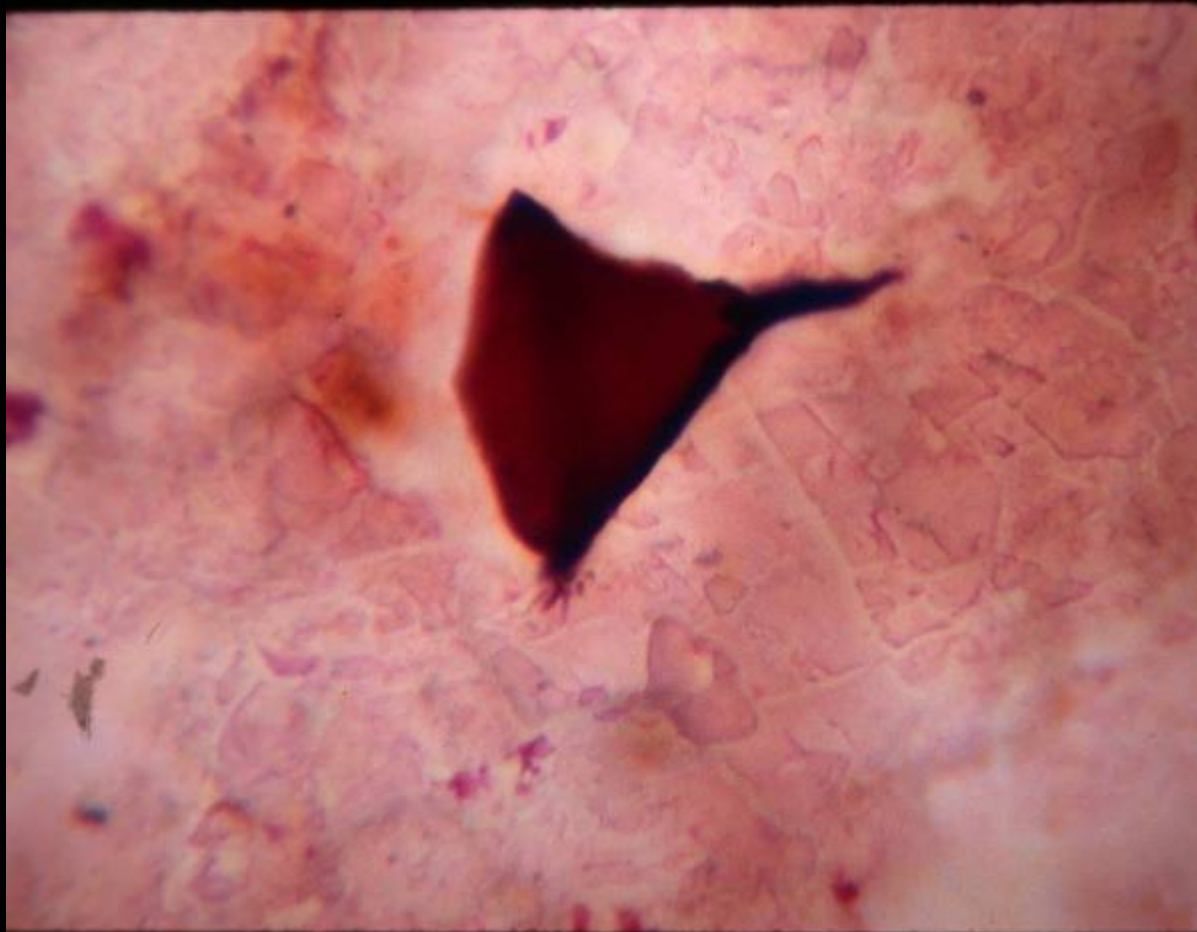


Conochitina



Conochitina turris





Acritarch ?