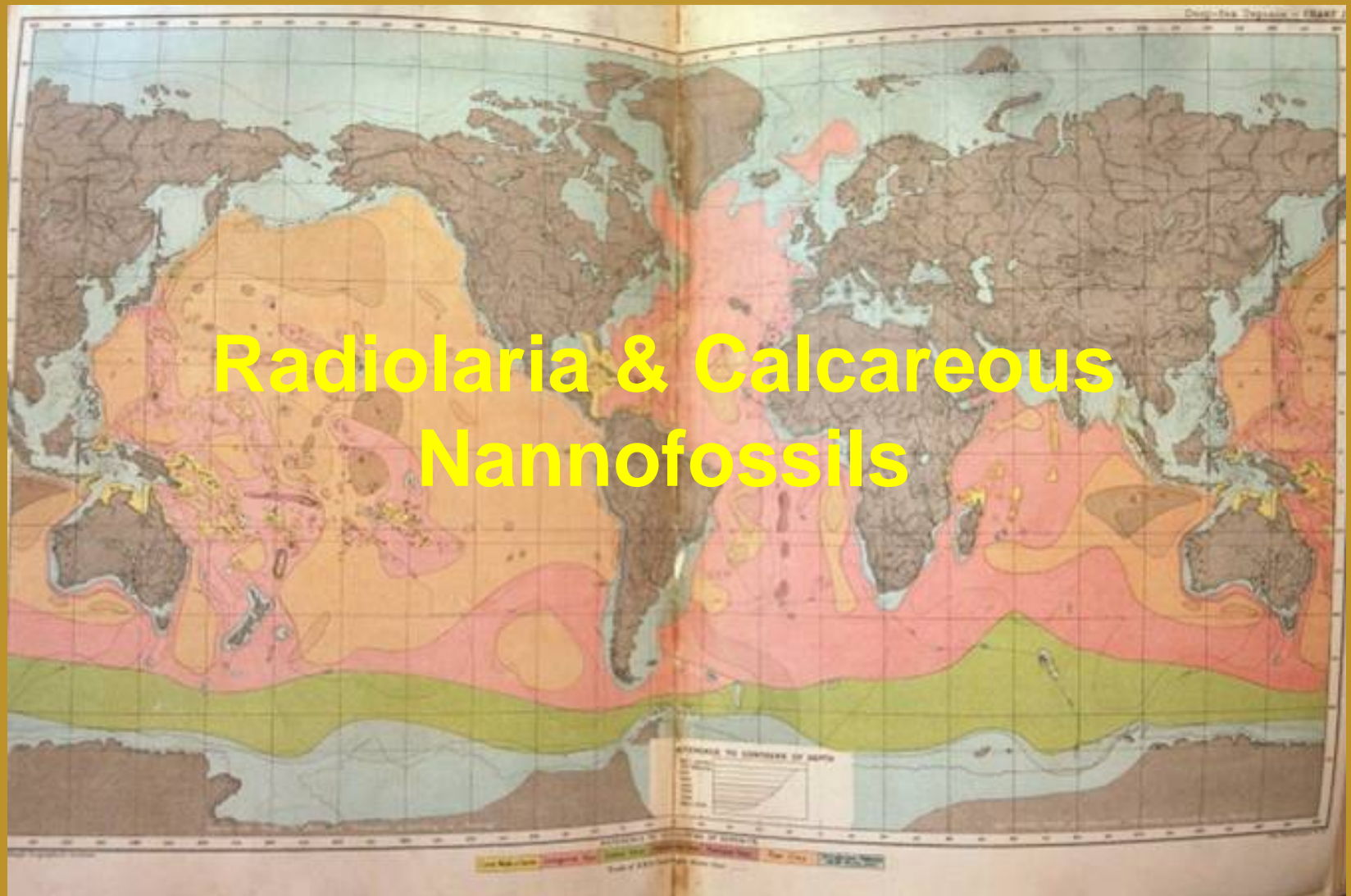
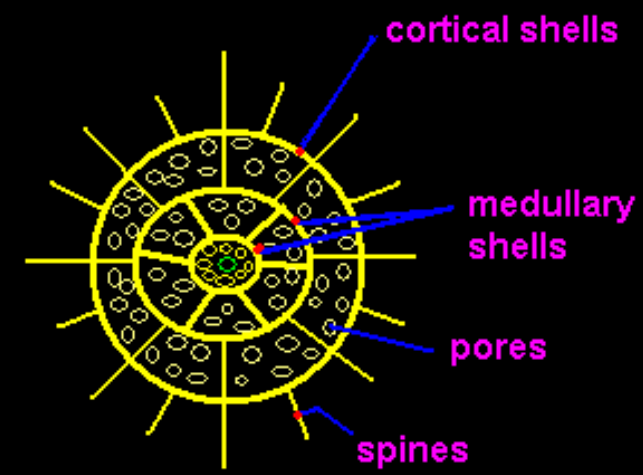
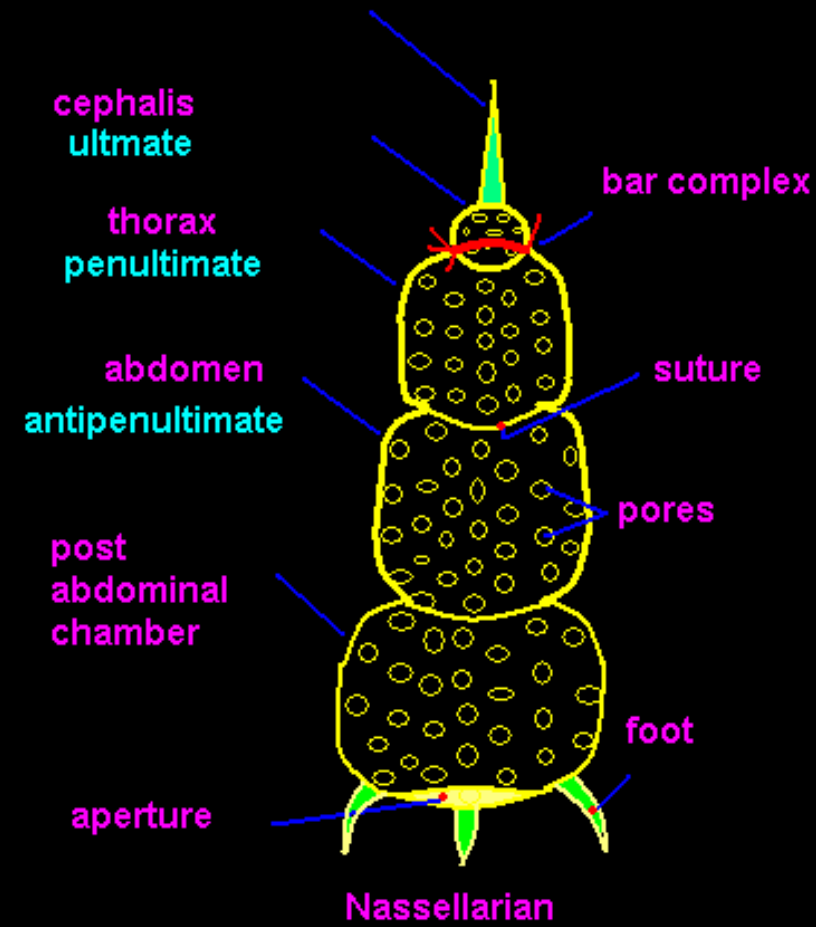


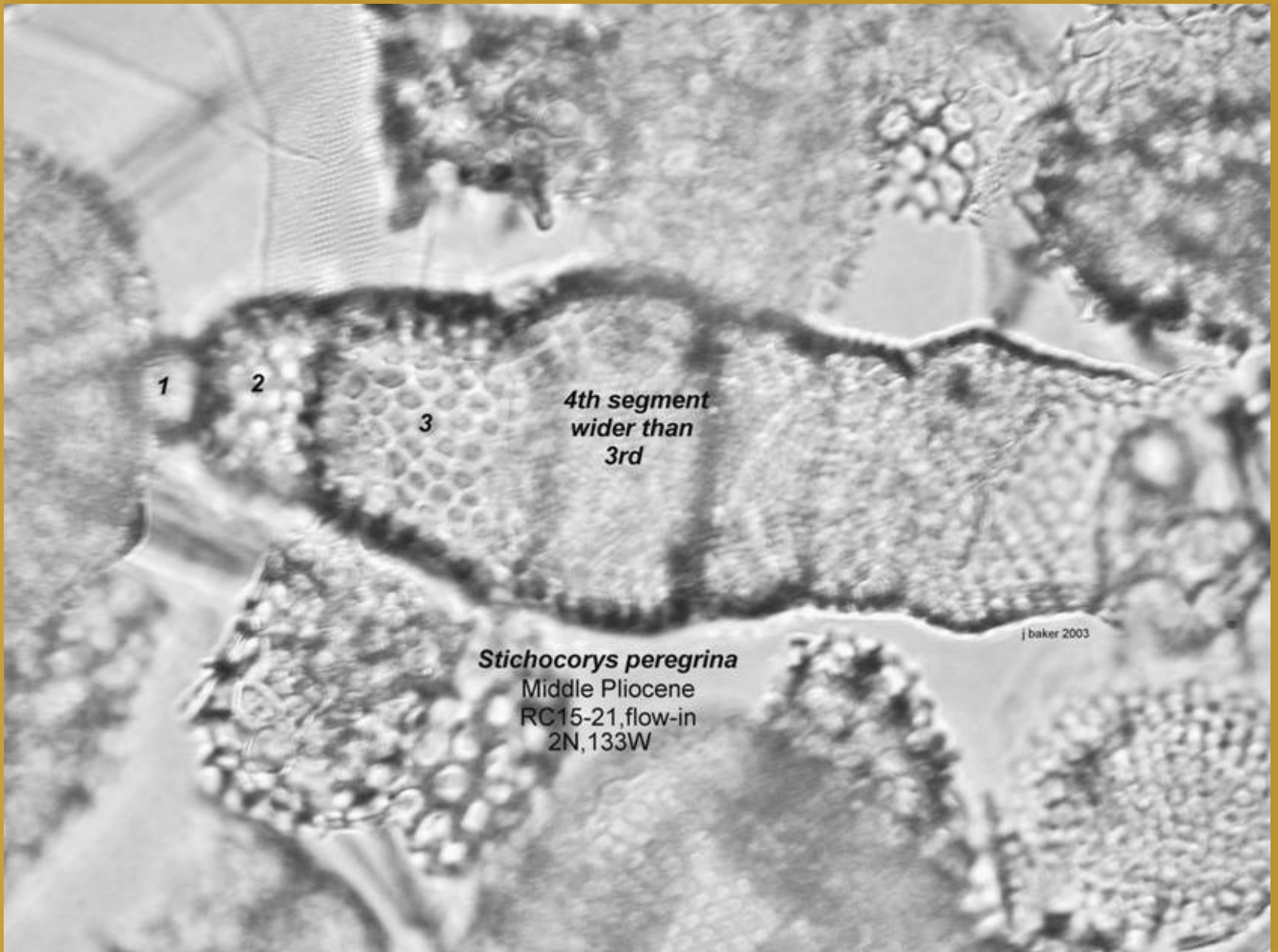
Radiolaria & Calcareous Nannofossils



Cephalic Spine



"RADIOLARIA" $\text{SiO}_2 + \text{H}_2\text{O}$



1

2

3

4th segment
wider than
3rd

Stichocorys peregrina
Middle Pliocene
RC15-21, flow-in
2N, 133W

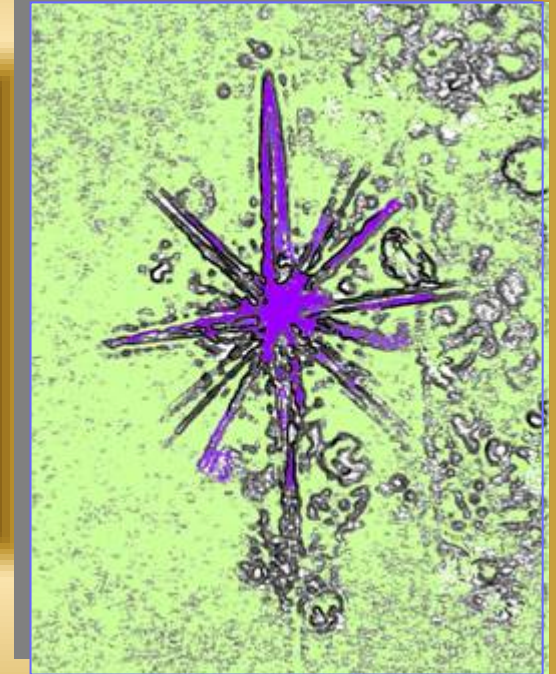
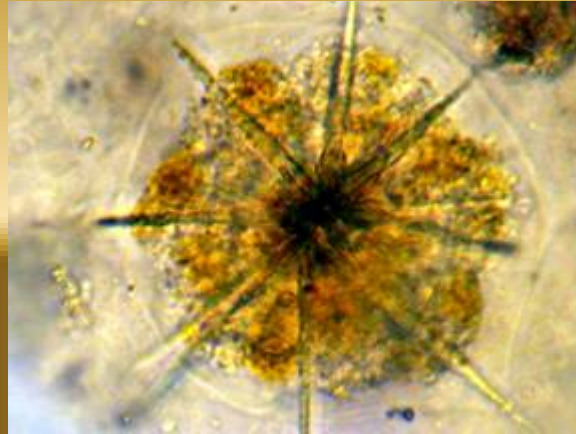
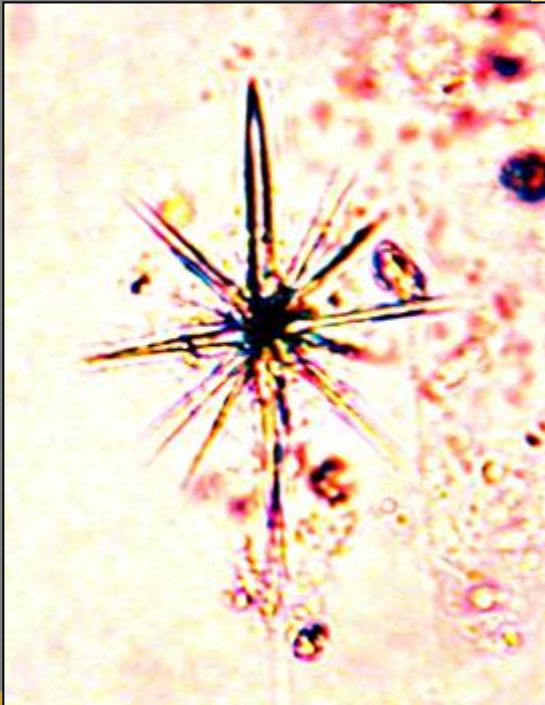
j baker 2003

Lithopera bacca

RC-15-21 Mid Pliocene



Strontium Sulphate Acantharia in Plankton Bloom 11-6-05 6
Miles W. of Sarasota



**Middle Eocene
Radiolaria of
Barbados**



Barbados

Lamont-Doherty

**Eocene Quarries at
Bath, Barbados**



Conset Bay

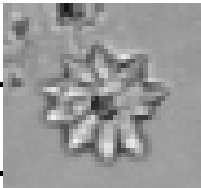
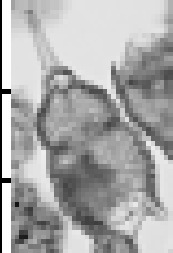
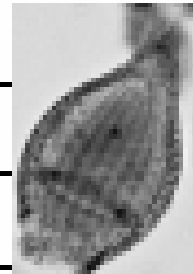
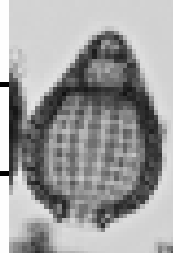
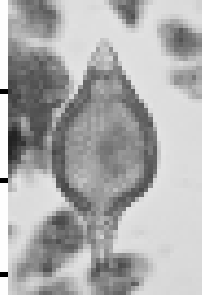
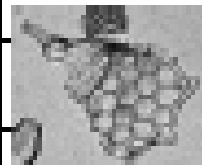

Image © 2007 DigitalGlobe
© 2007 Europa Technologies

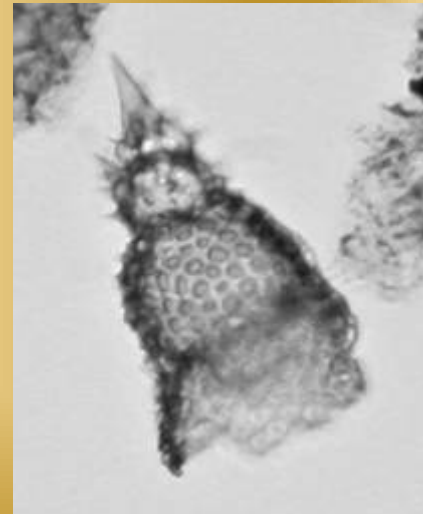
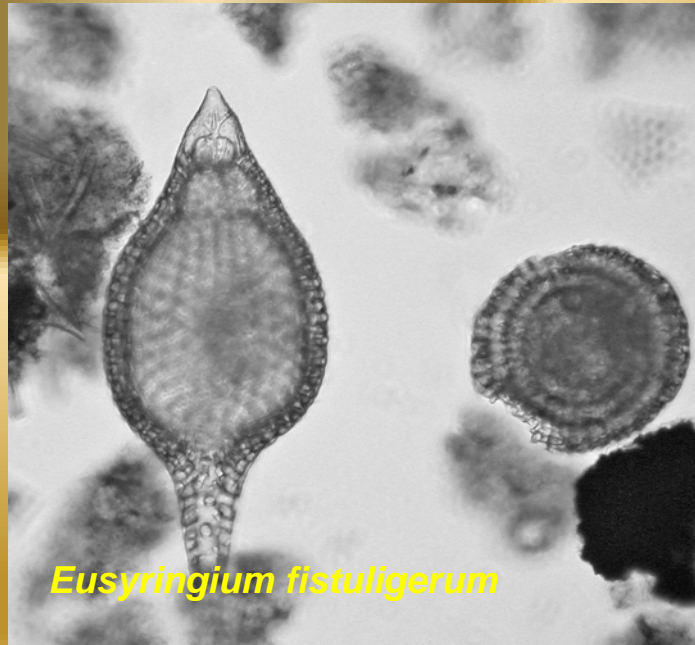
©2007 Google™

Pointer 13°10'54.11" N 59°28'05.09" W elev 23 ft Streaming ||||| 100%

Eye alt 4791 ft

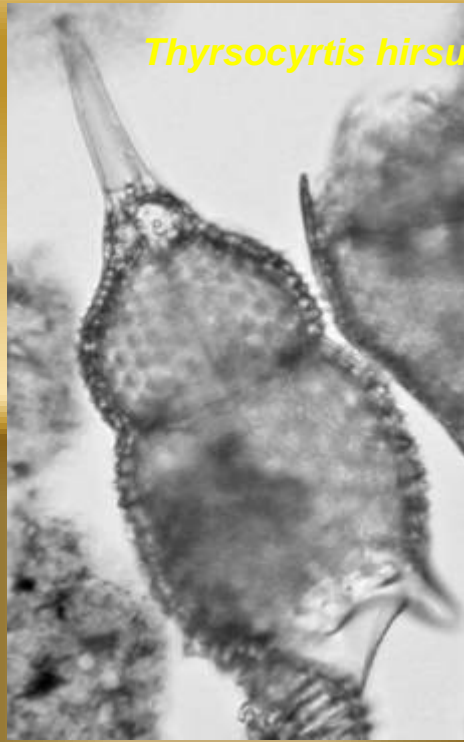
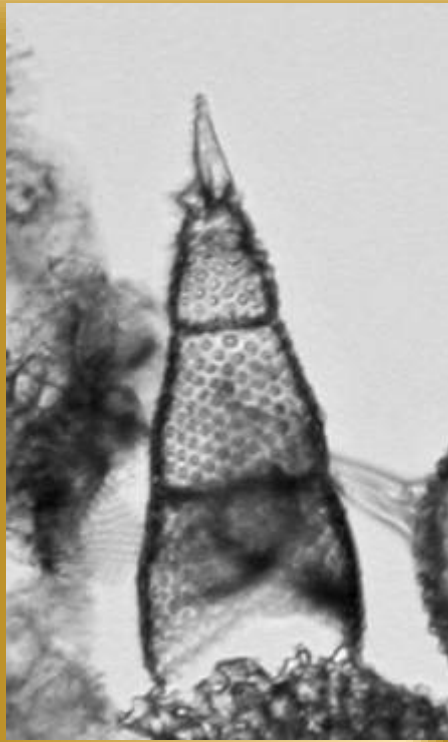
Biostratigraphy of the Latest Middle Eocene Oceanic Formation, Barbados

Epoch	<i>Dicouaria barbadensis</i>	<i>Pedocypris dinesi</i>	<i>Pedocypris papilli</i>	<i>Dolycopora murgollieri</i>	<i>Garyptaera fistuligerus</i>	<i>Therapsocia hinculphi</i>	<i>Antiphonia barbadensis</i>
Late Oligocene							
Middle Oligocene							
Early Oligocene							
Late Eocene							
Middle Eocene							
Early Eocene							



Dictyoprora mongolfieri

Eusyringium fistuligerum



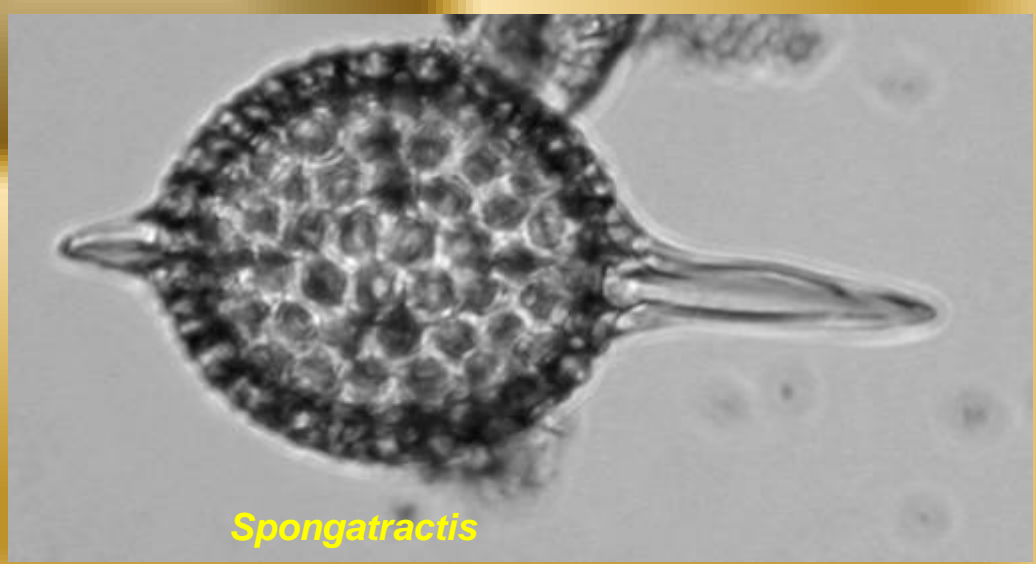
Thyrsocyrtis hirsuta



Cannobotrythidae



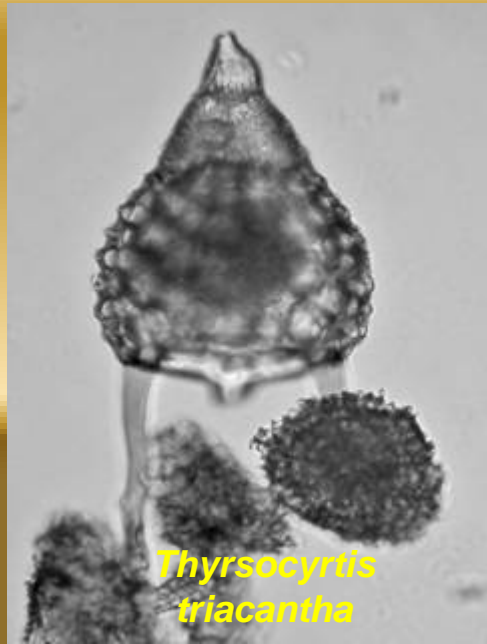
Thyrsocyrtis triacantha



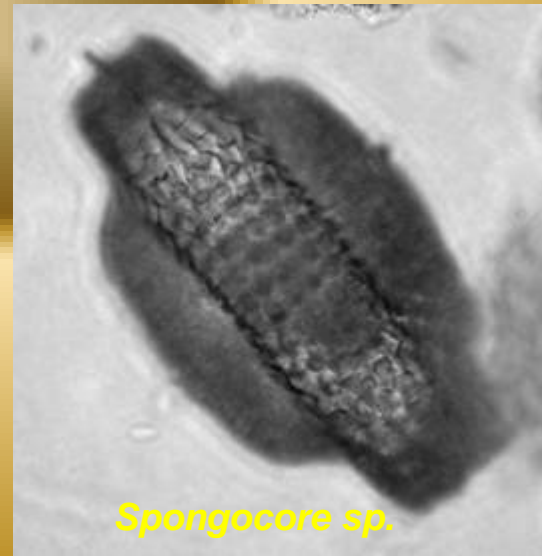
Spongatractis



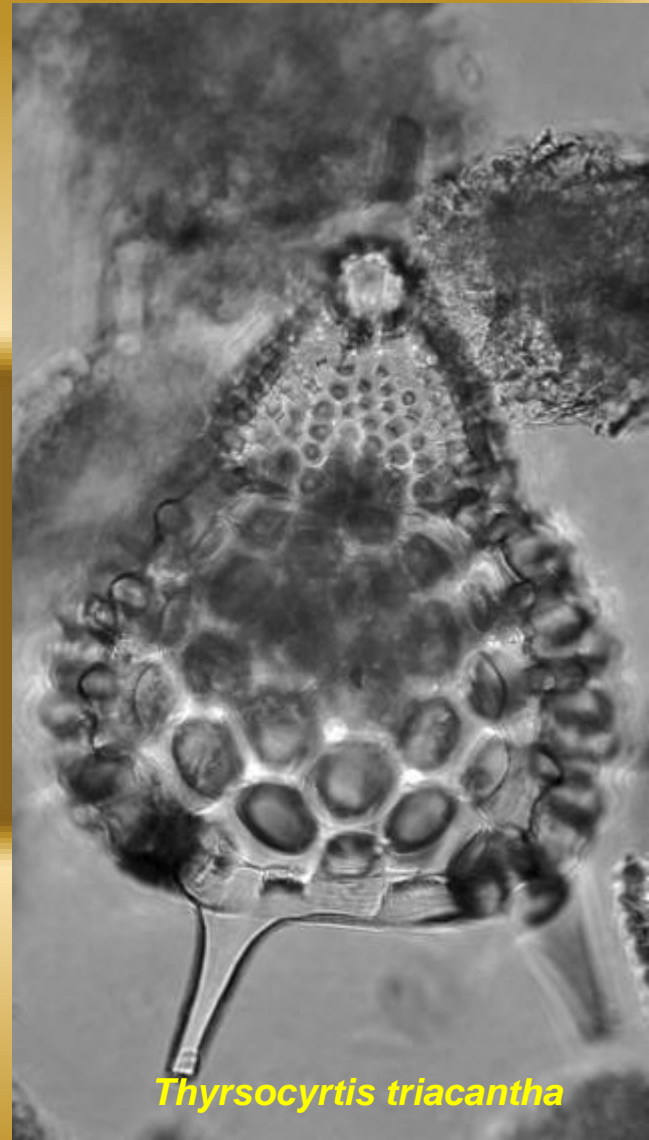
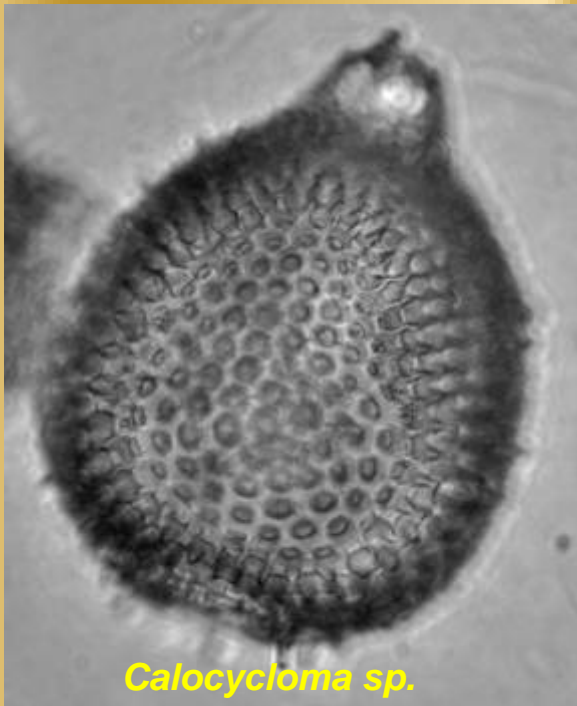
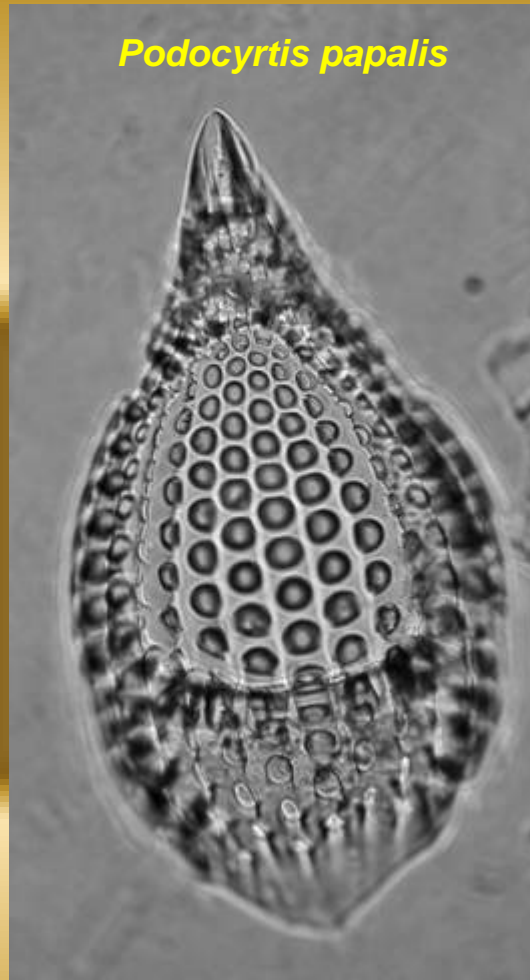
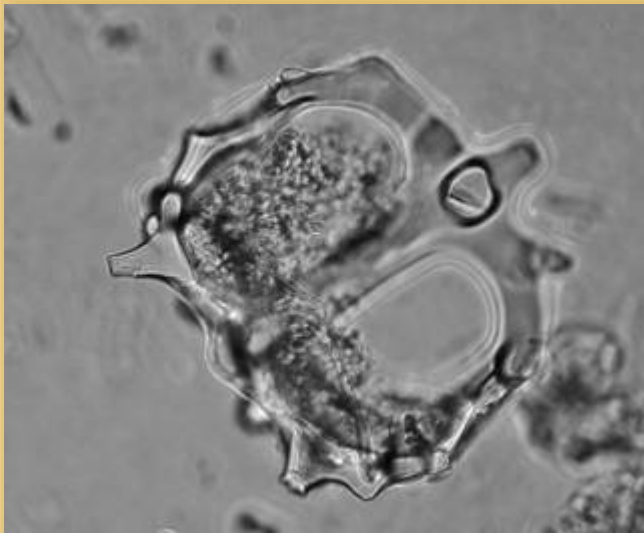
Plagoniidae

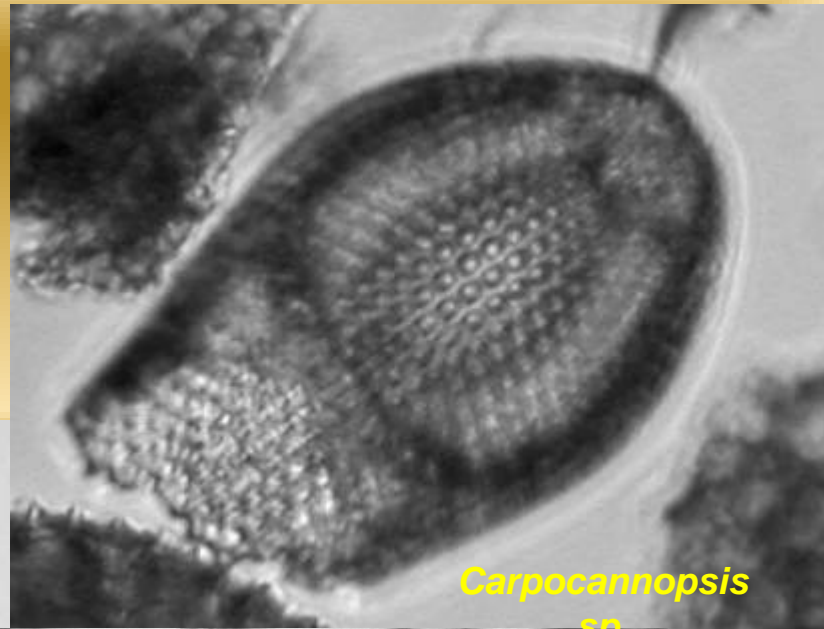


Thyrsocyrtis triacantha

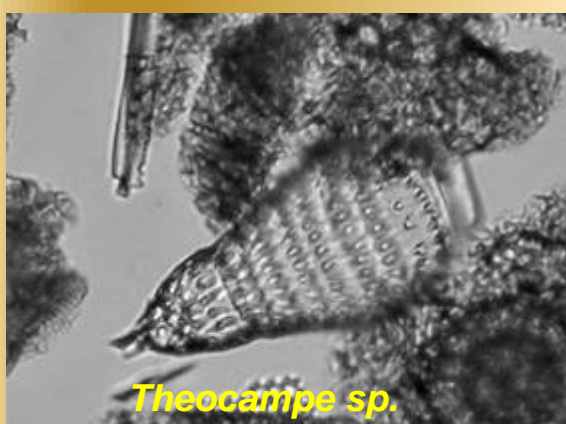


Spongocore sp.

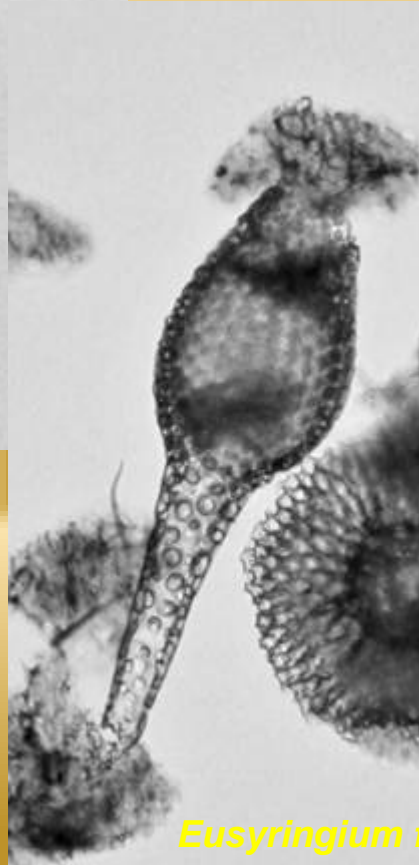




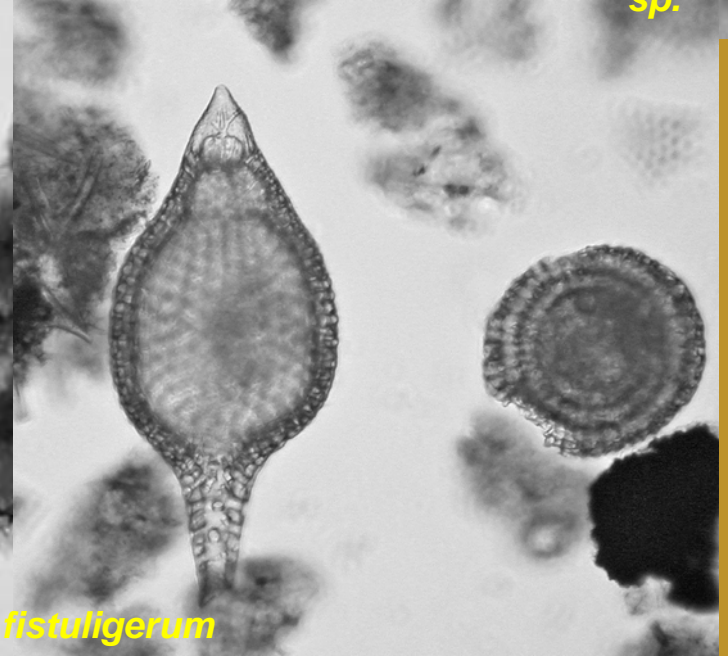
Carpocannopsis
sp.

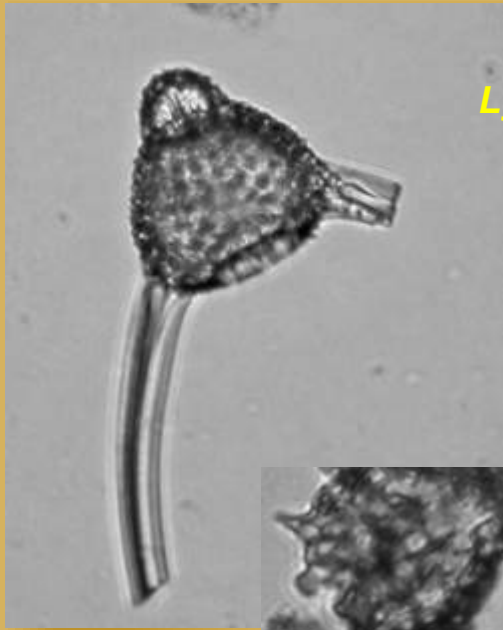


Theocampe sp.

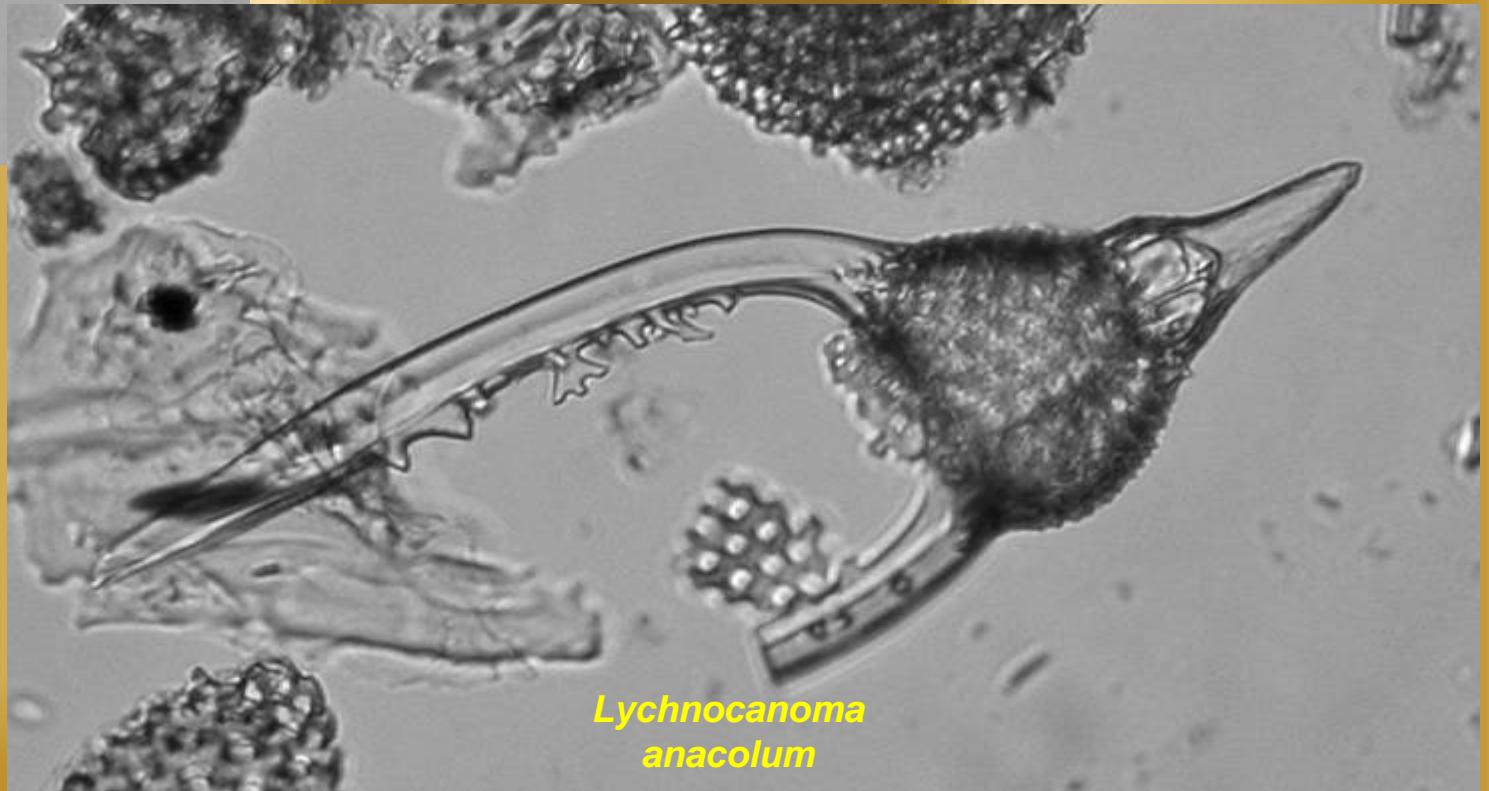


Eusyringium fistuligerum





Lychnocanoma sp.



Lychnocanoma
anacolum

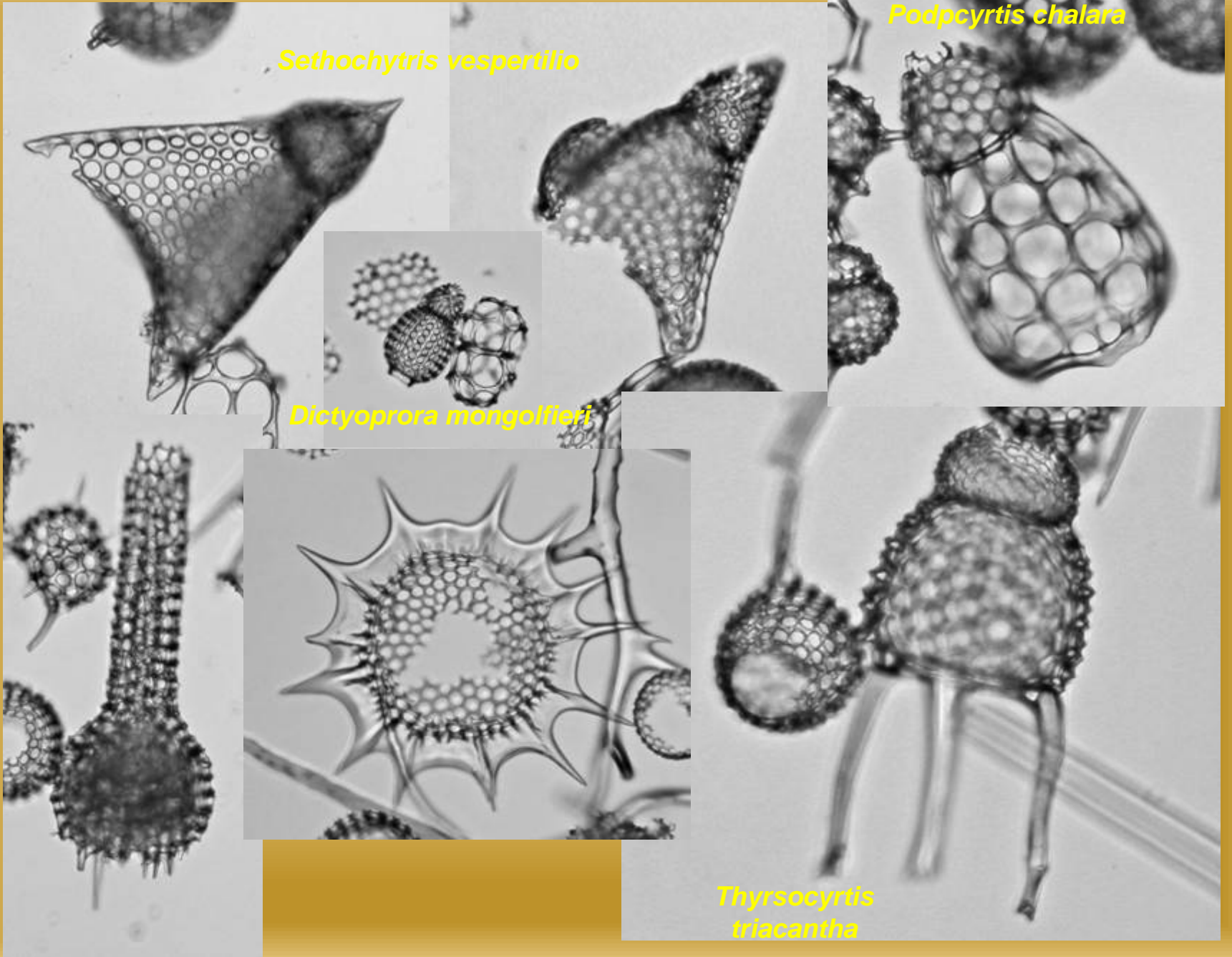
**Middle Eocene
Radiolaria of
VM-20-44**

Sethochytris vespertilio

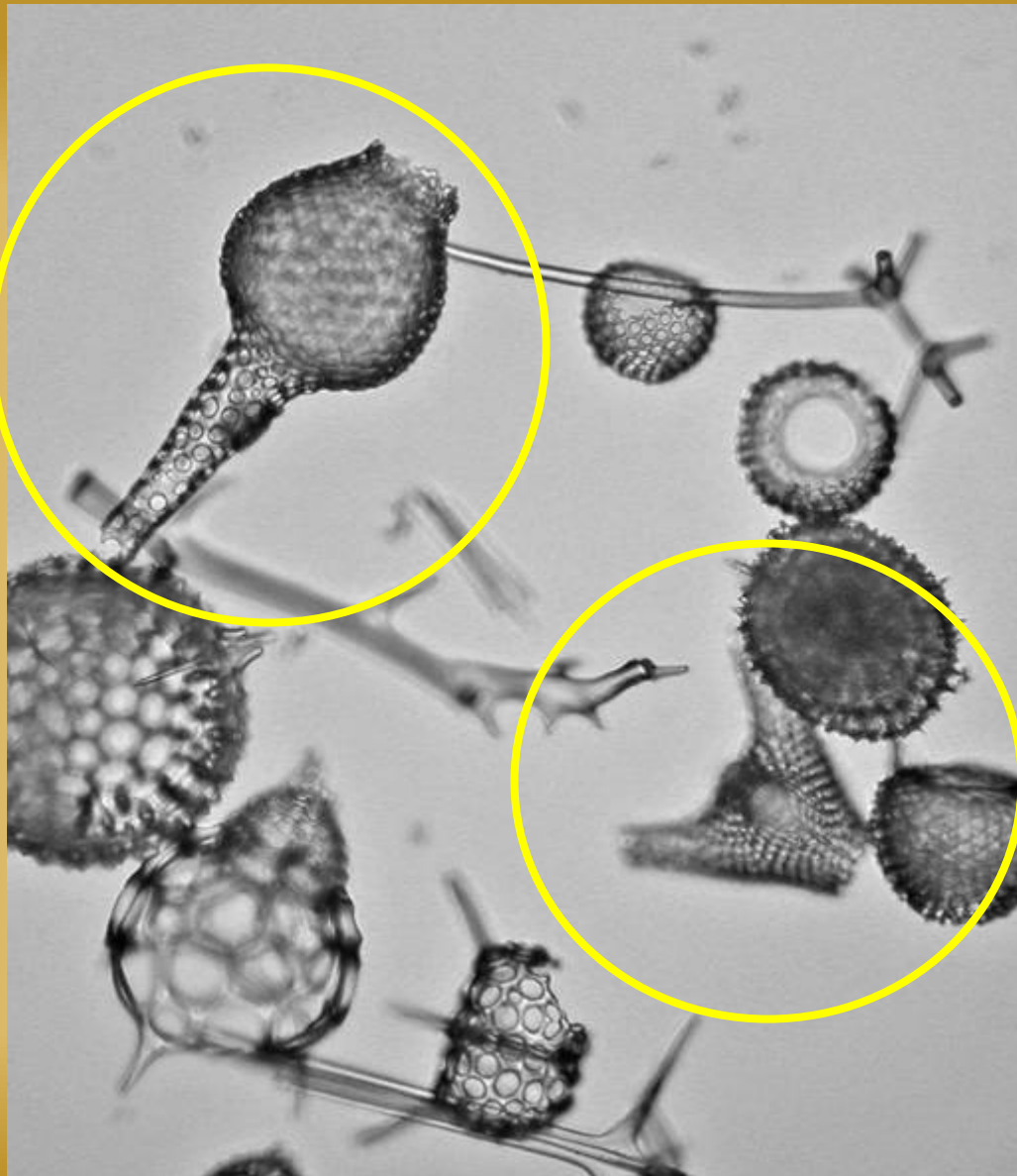
Podocyrtis chalara

Dictyoprora mongolfieri

Thyrsocyrtis triacantha



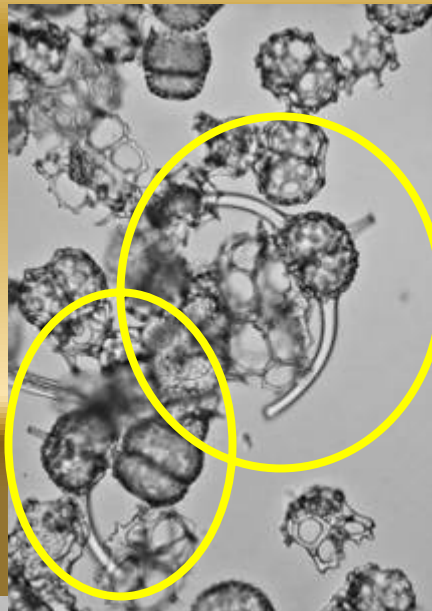
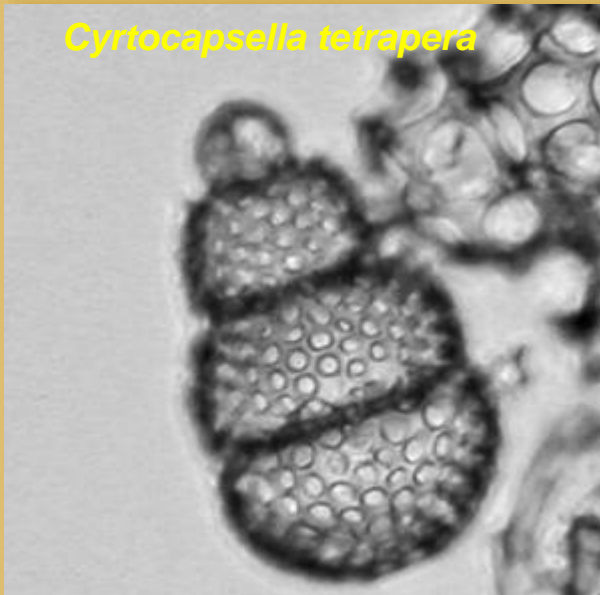
*Eusyngium
fistuligerum*



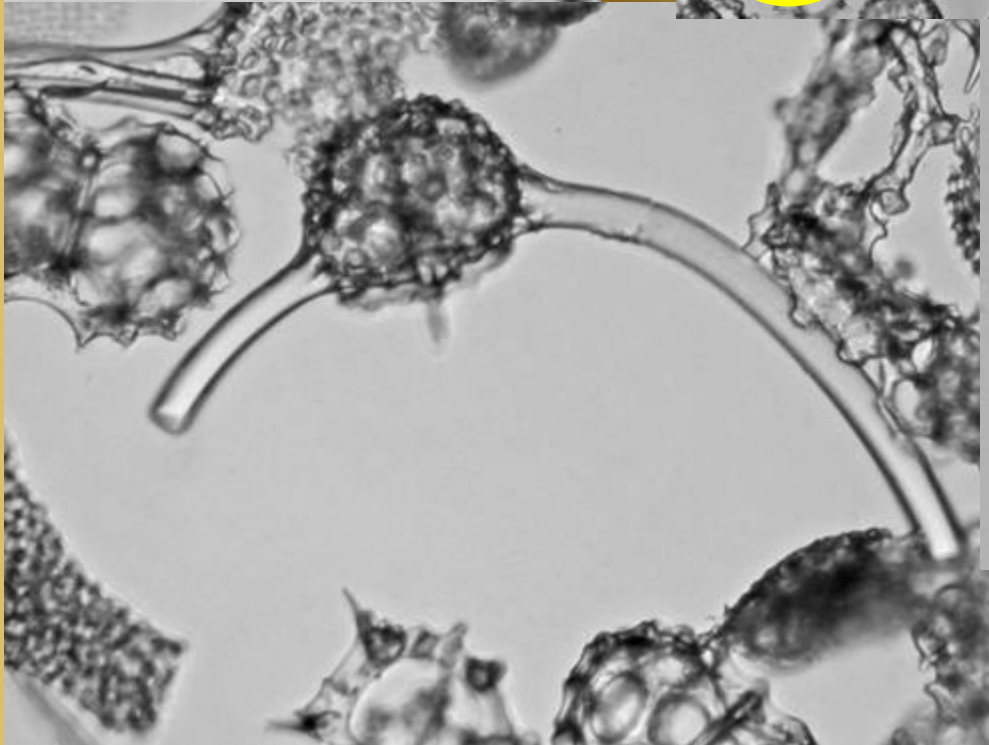
*Sethochytris
triconiscus*

**Early Miocene,
Equatorial Mid-Pacific:
RC-15-23-Core Base**

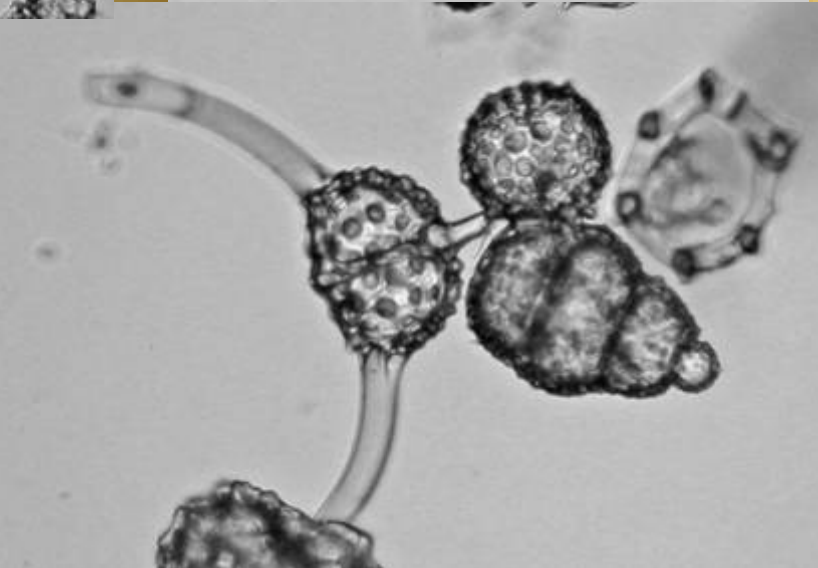
Cyrtocapsella tetrapera



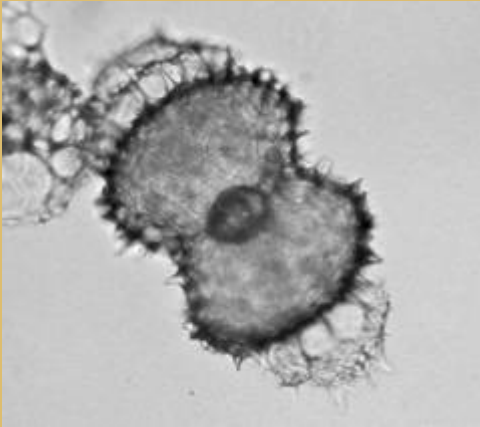
Lichnocanoma elongata



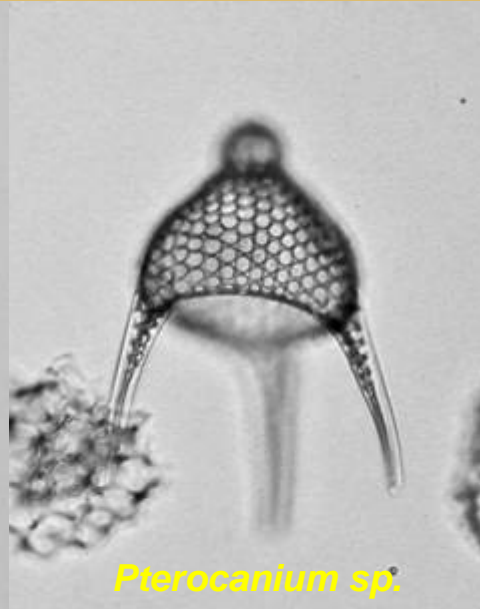
Dorcadospyris forcipata



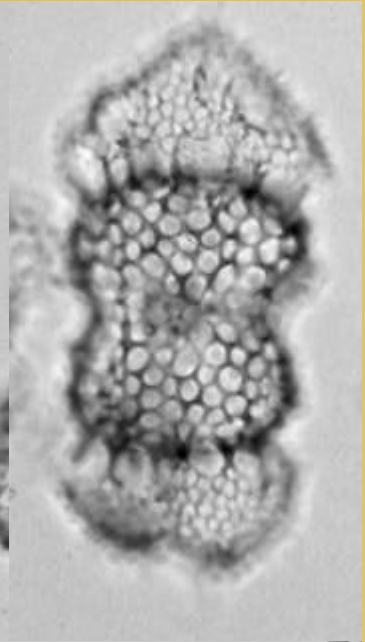
**Mid Miocene,
Equatorial Mid-Pacific:
RC-15-23- Mid Core**



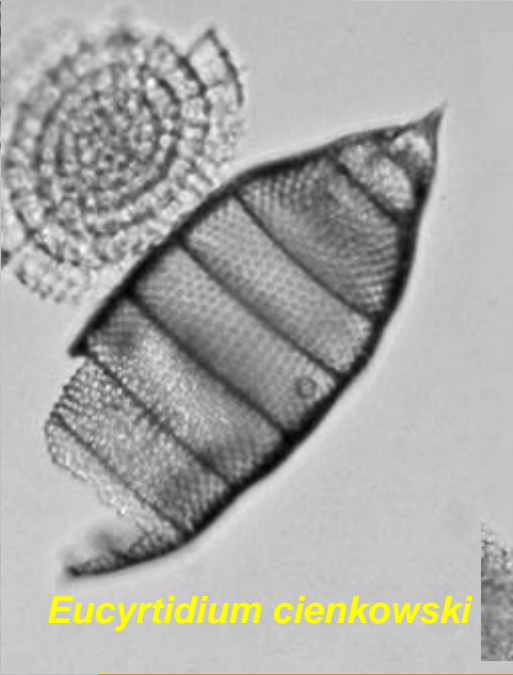
Didymocyrtis antepenultimus-penultimus gp.



Pterocanium sp.



Theocorythium sp.



Eucyrtidium cienkowski



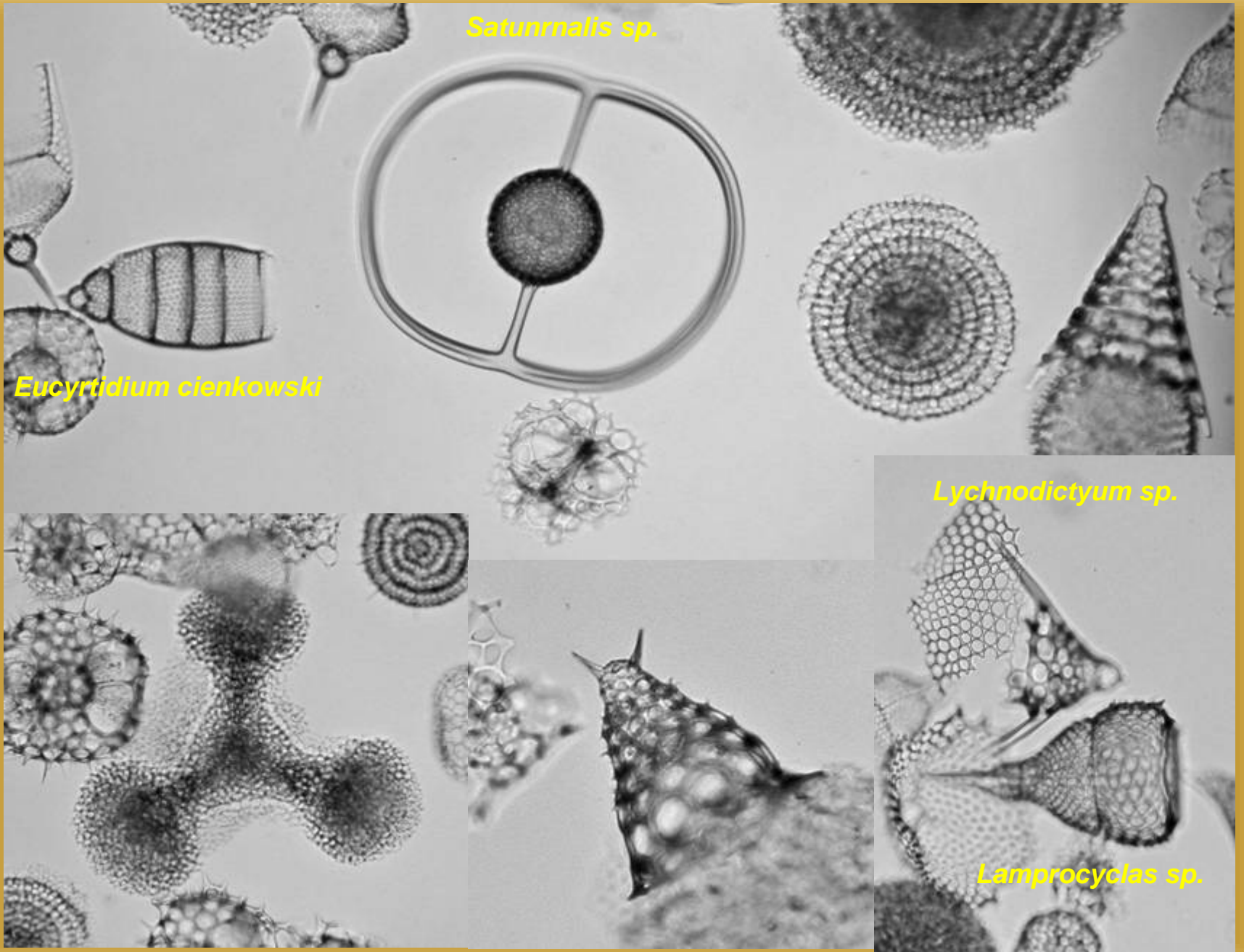
Lithopera neotera

Saturnalis sp.

Eucyrtidium cienkowski

Lychnodictyum sp.

Lamprocyclas sp.

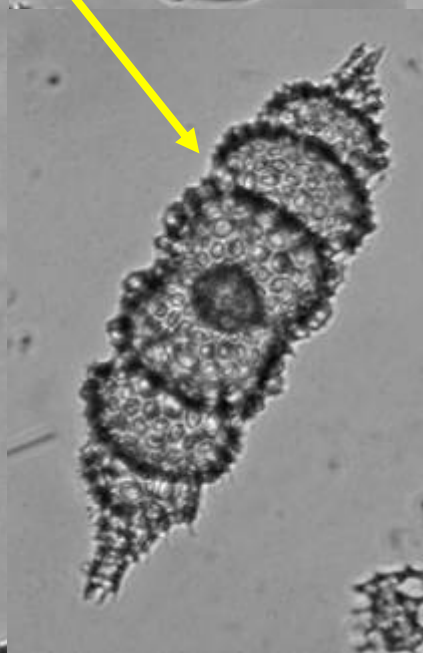


**Late Miocene,
Equatorial Mid-Pacific:
RC-15-18**

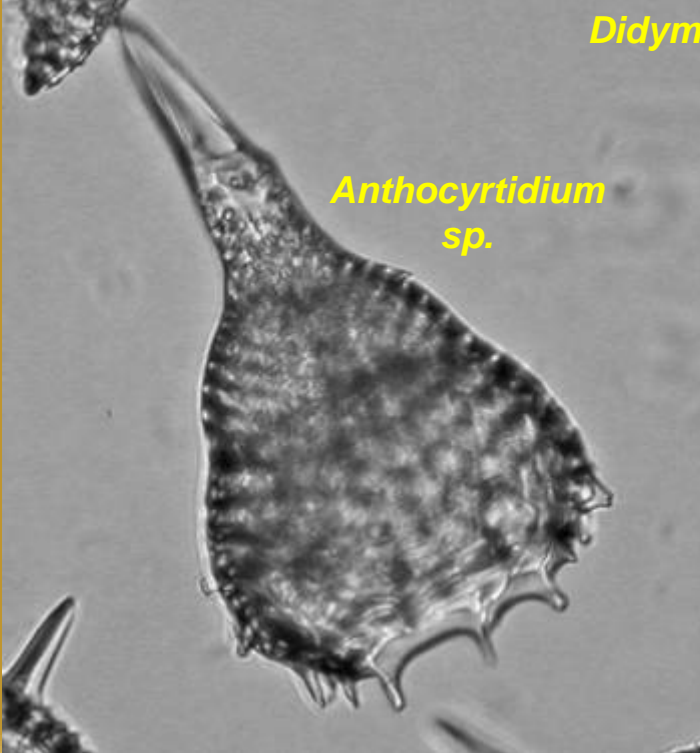
Stichocorys delmontensis
transitional to *peregrina*



Didymocyrtis penultimus gp.



Anthocyrtidium
sp.



Lithopera bacca



Tristylospyris sp.

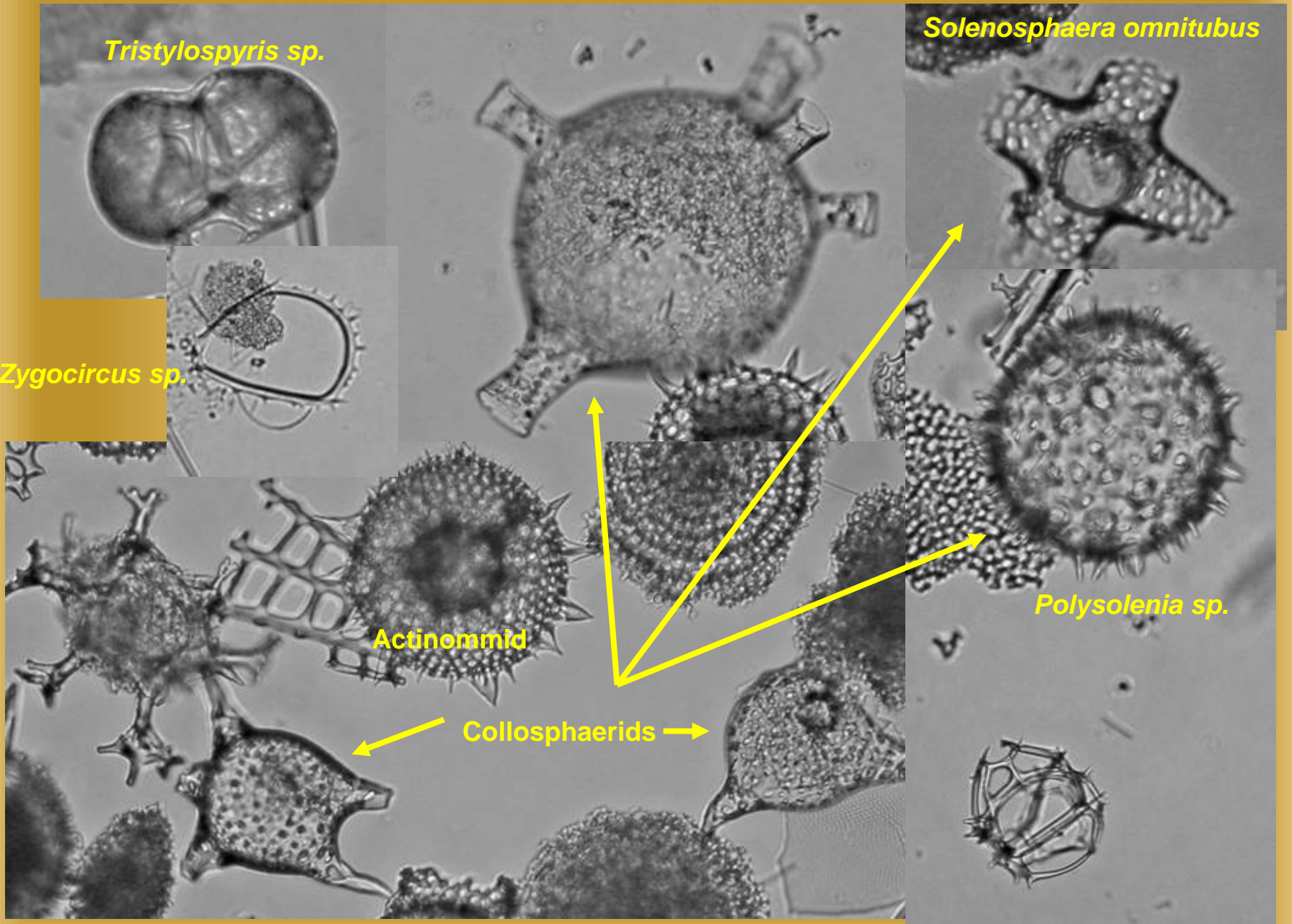
Solenosphaera omnitubus

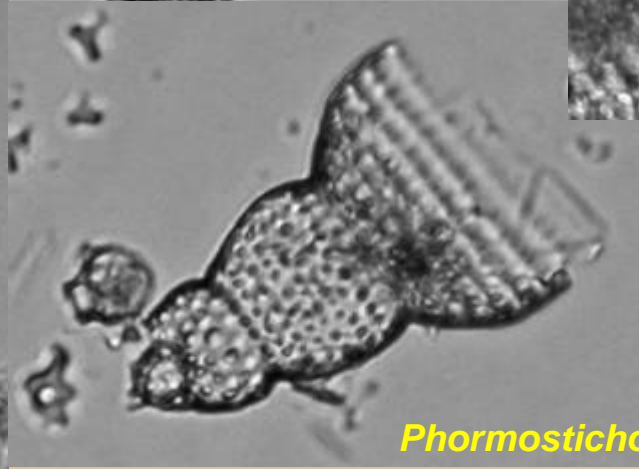
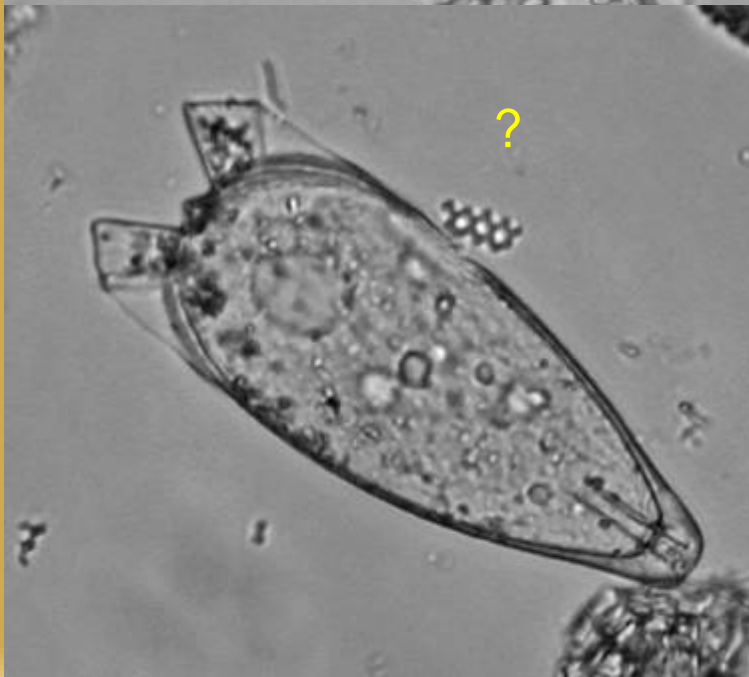
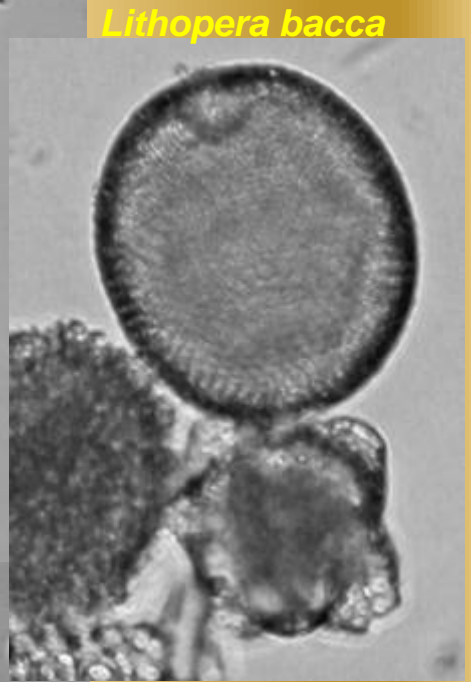
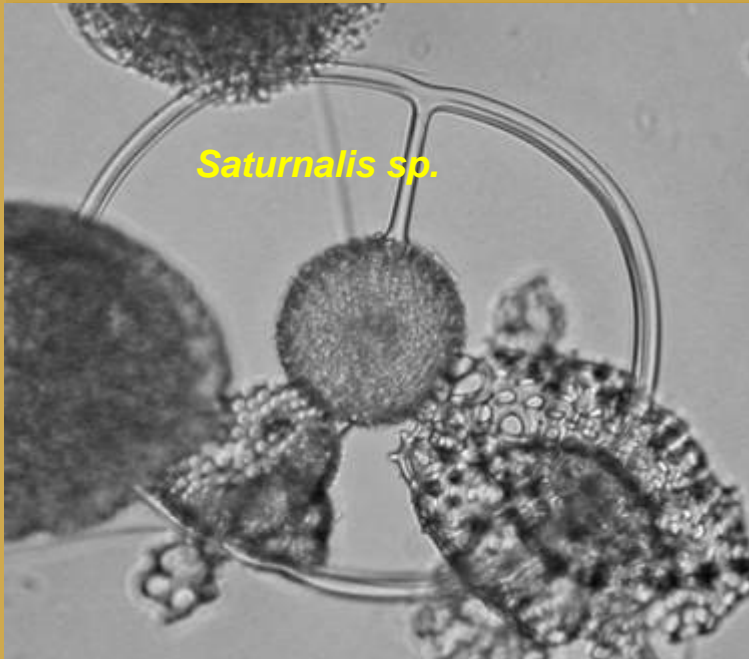
Zygocircus sp.

Actinommid

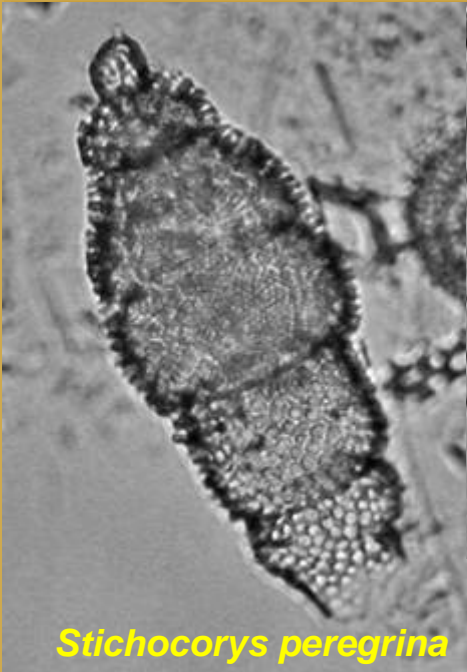
Polysolenia sp.

Collosphaerids

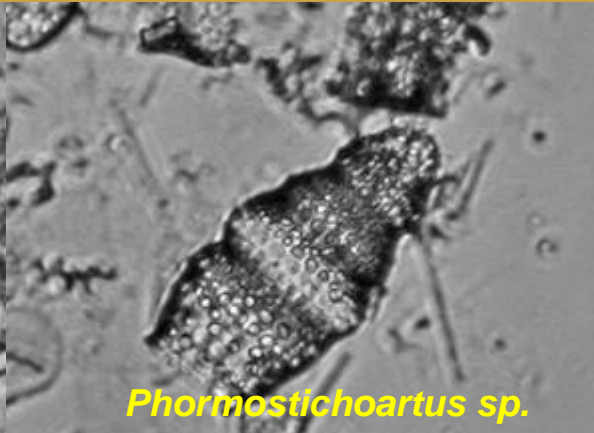




**Mid-Pliocene,
Equatorial Mid-Pacific:
RC-15-21**



Stichocorys peregrina



Phormostichoartus sp.



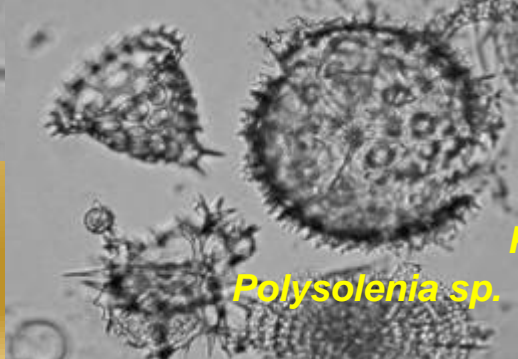
Lychnodictyum audax



Saturnalis sp.



Pterocanium prismatium



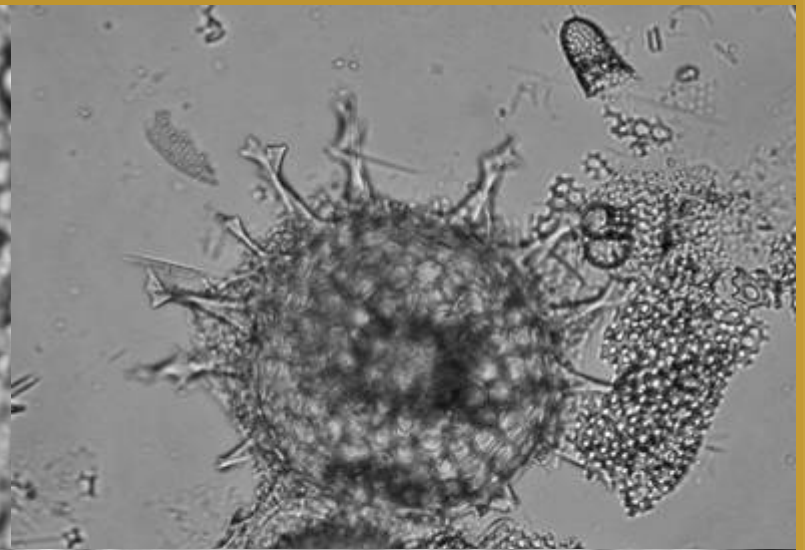
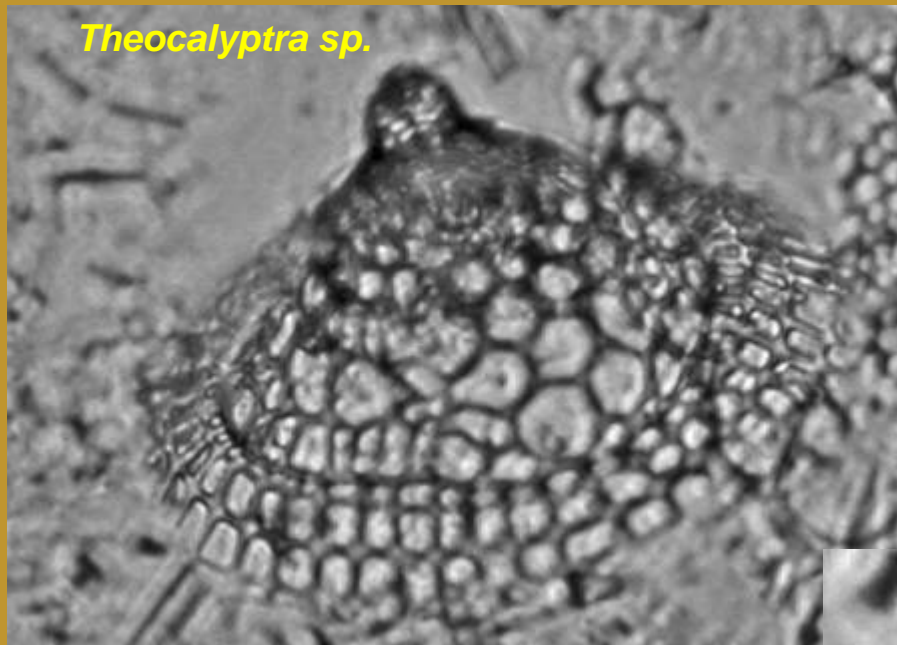
Polysolenia sp.



Stichocorys peregrina

Phormostichoartus sp.

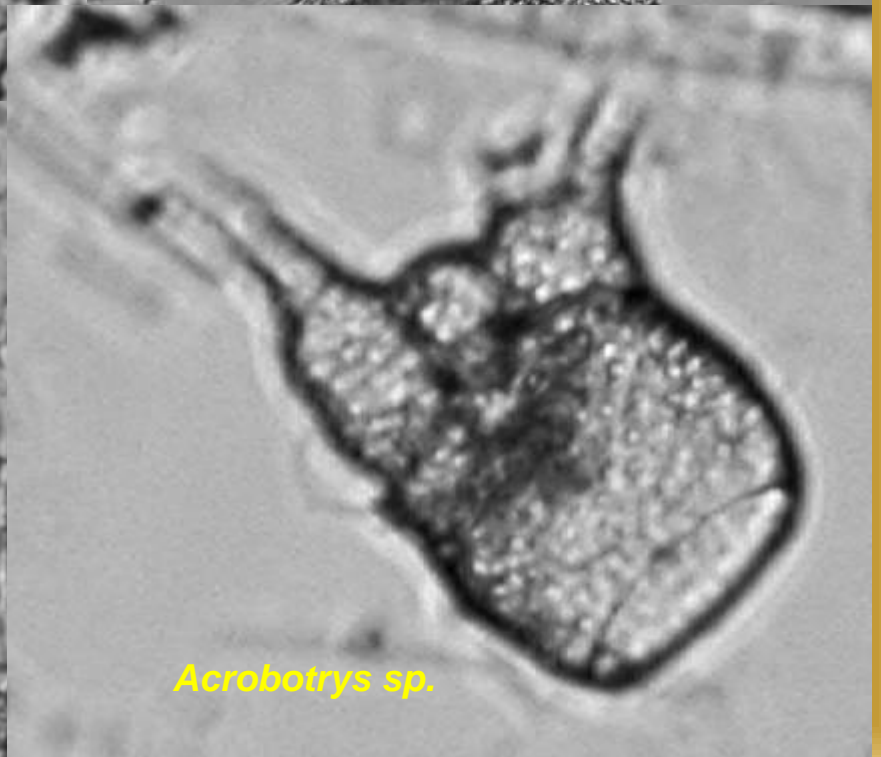
Theocalyptra sp.

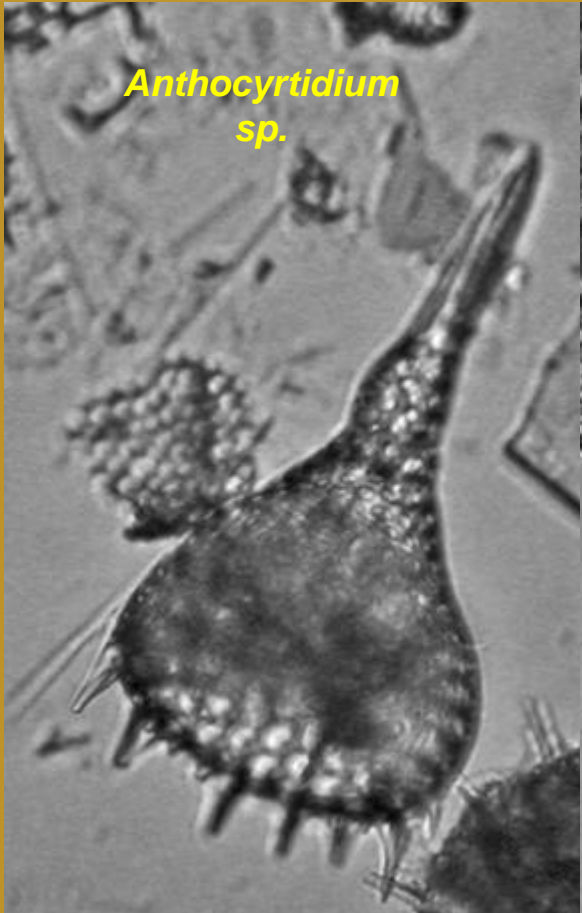


Clathrocycloma sp.



Acrobotrys sp.





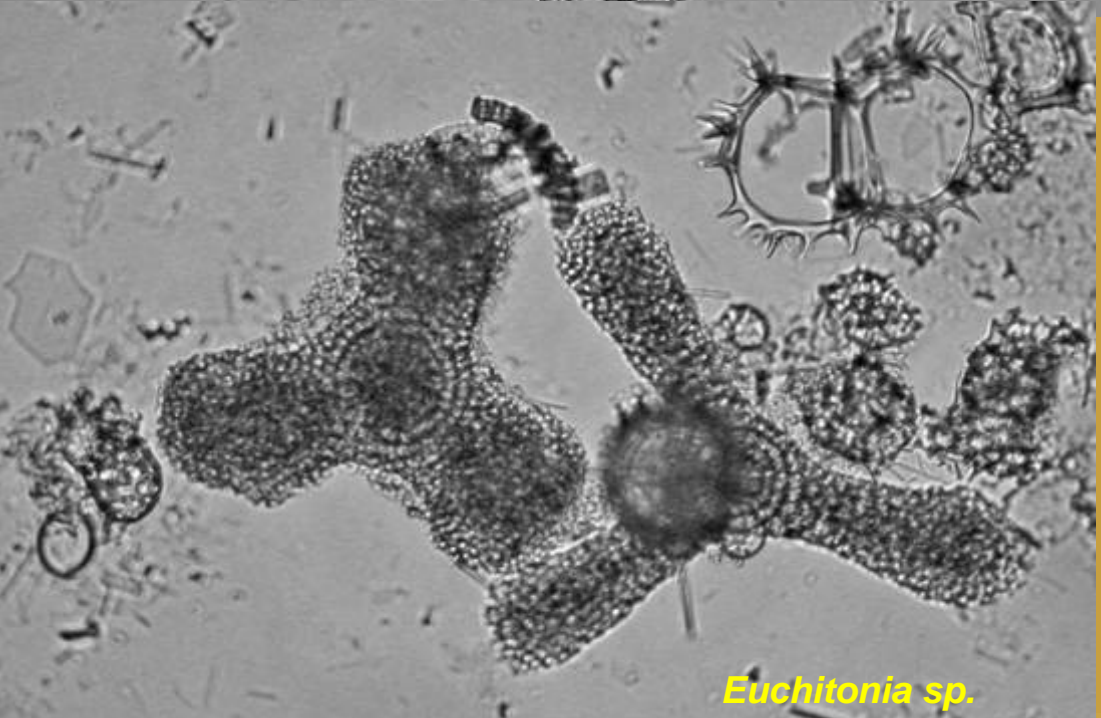
Anthocyrtidium
sp.



Spongaster tetras tetras

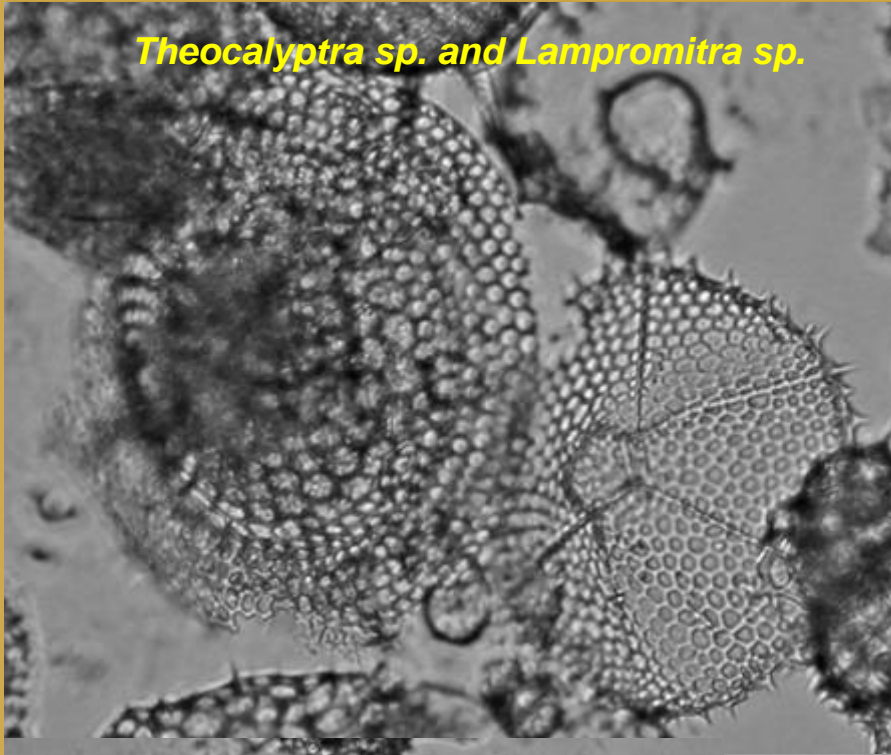


Cornutella sp.



Euchitonia sp.

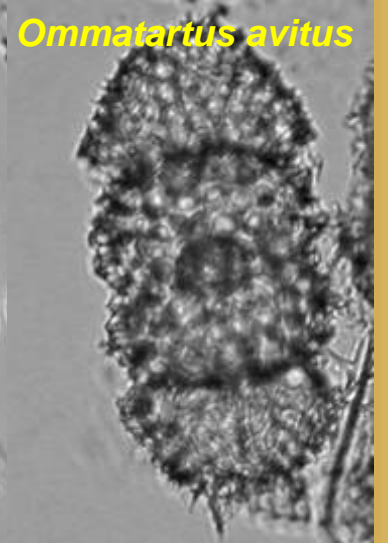
Theocalyptra sp. and *Lampromitra* sp.



Collospheerid cf *Solenosphaera* sp.



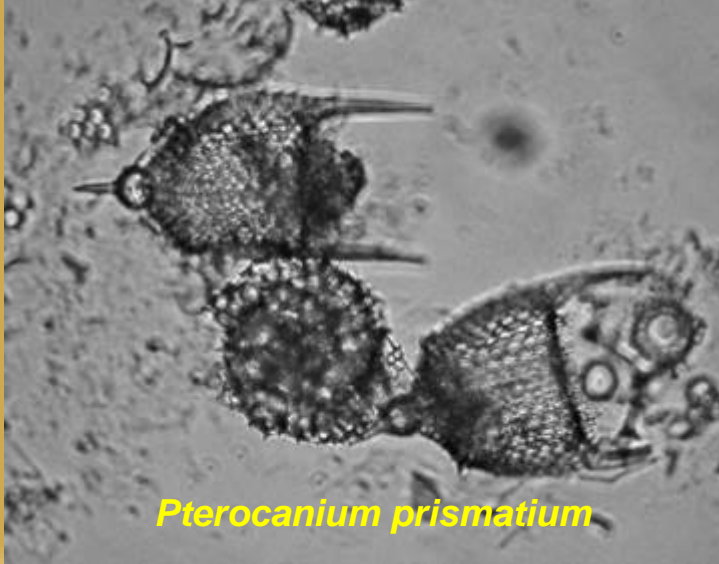
Ommatartus *avitus*



Saturnalis sp.

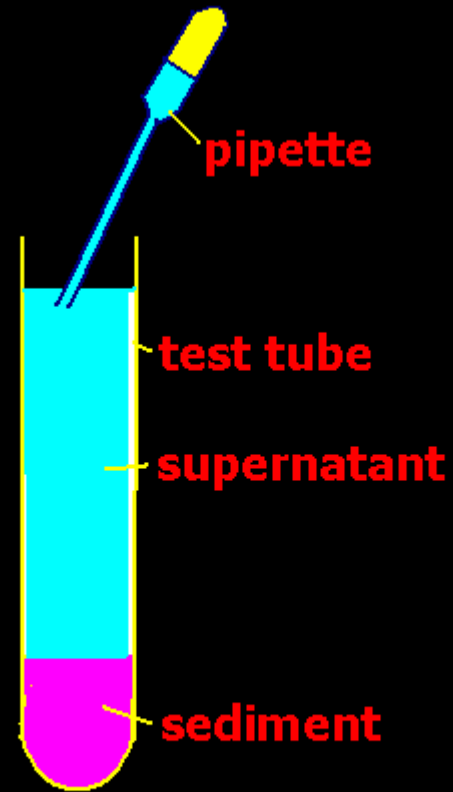


Pterocanium *prismatium*



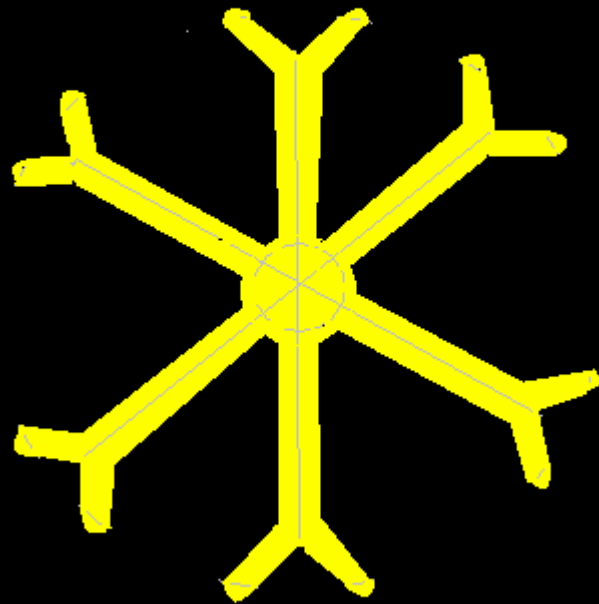
Calcareous Nannofossils:

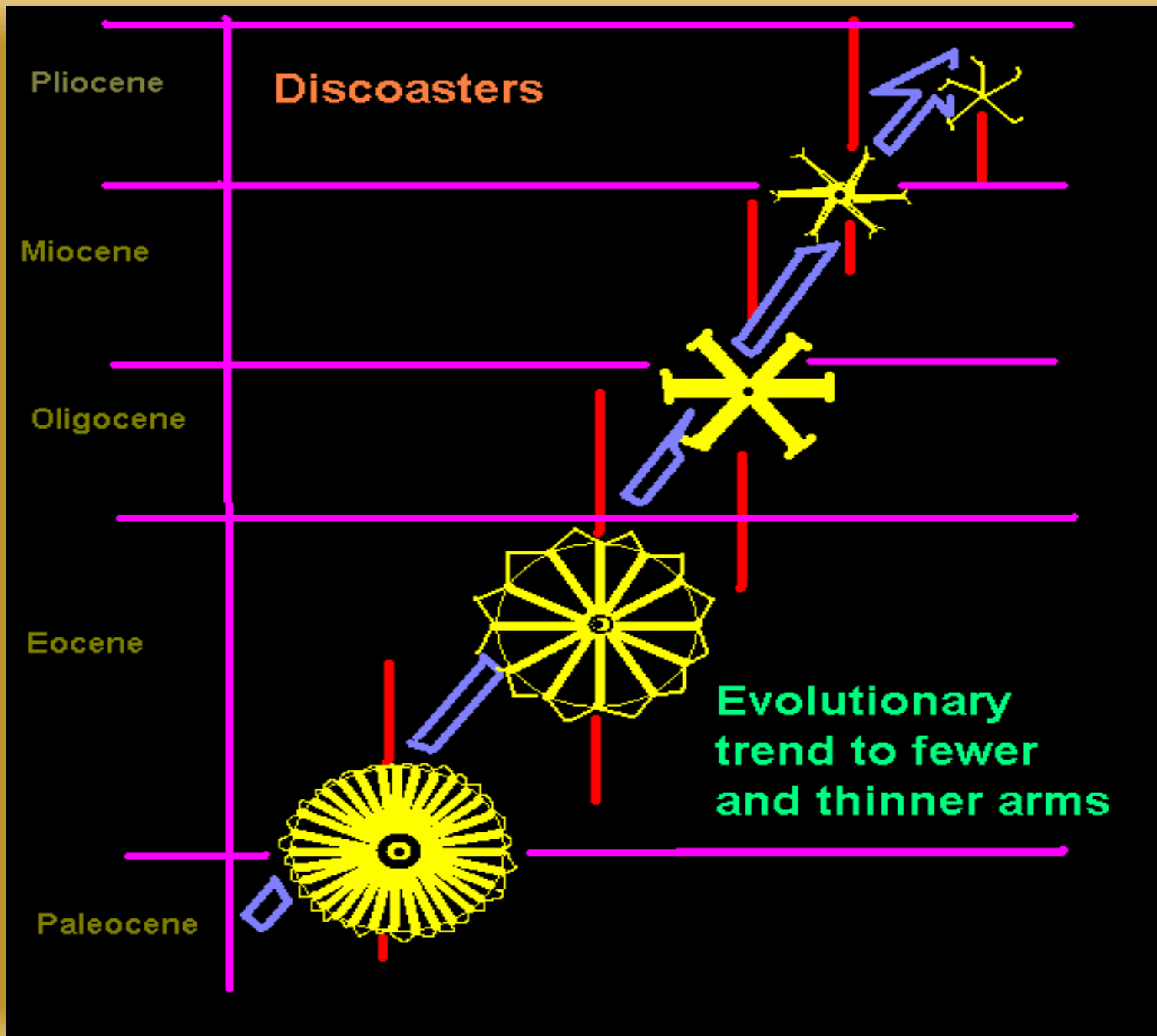
Discoasters, Coccoliths

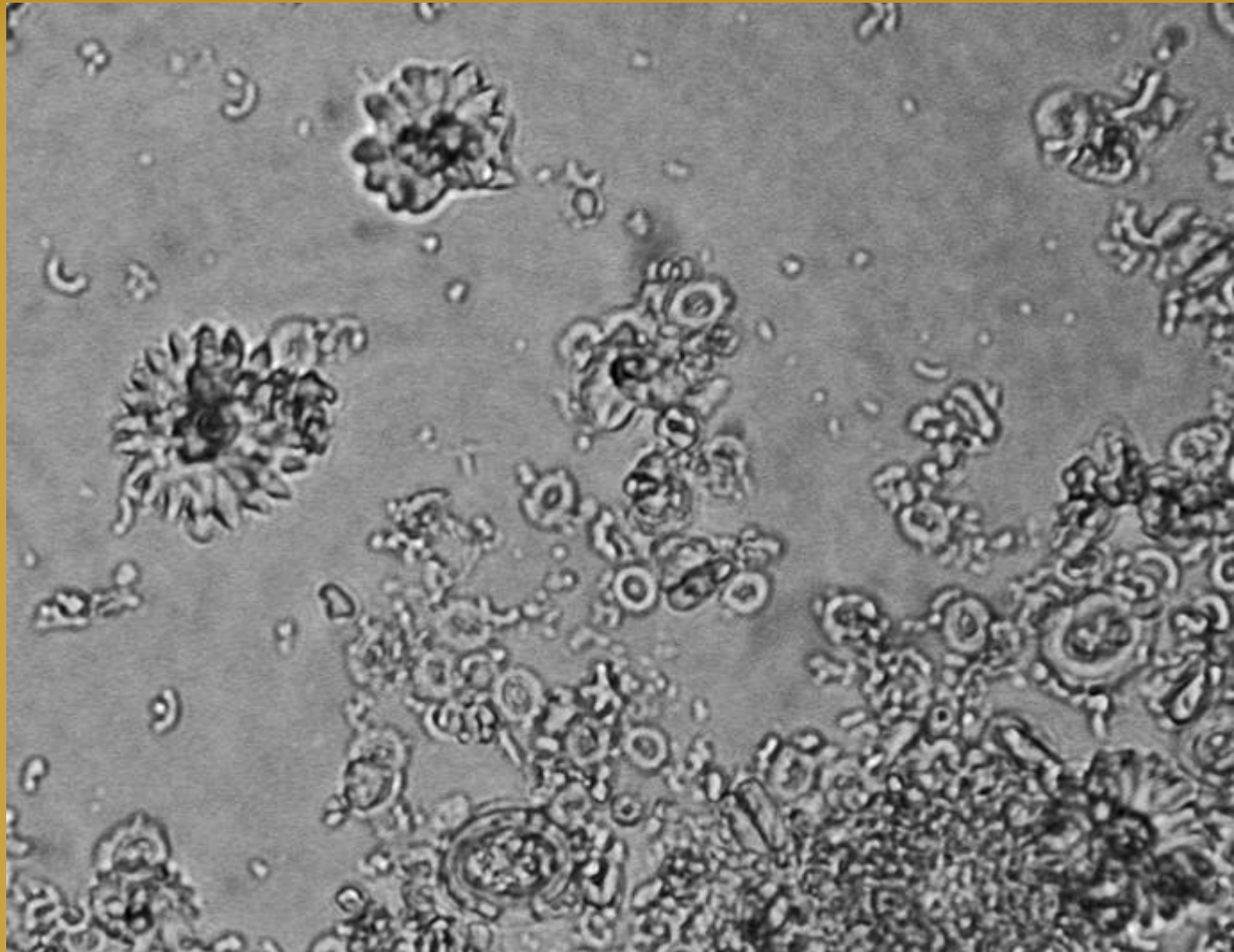


nanofossil extraction

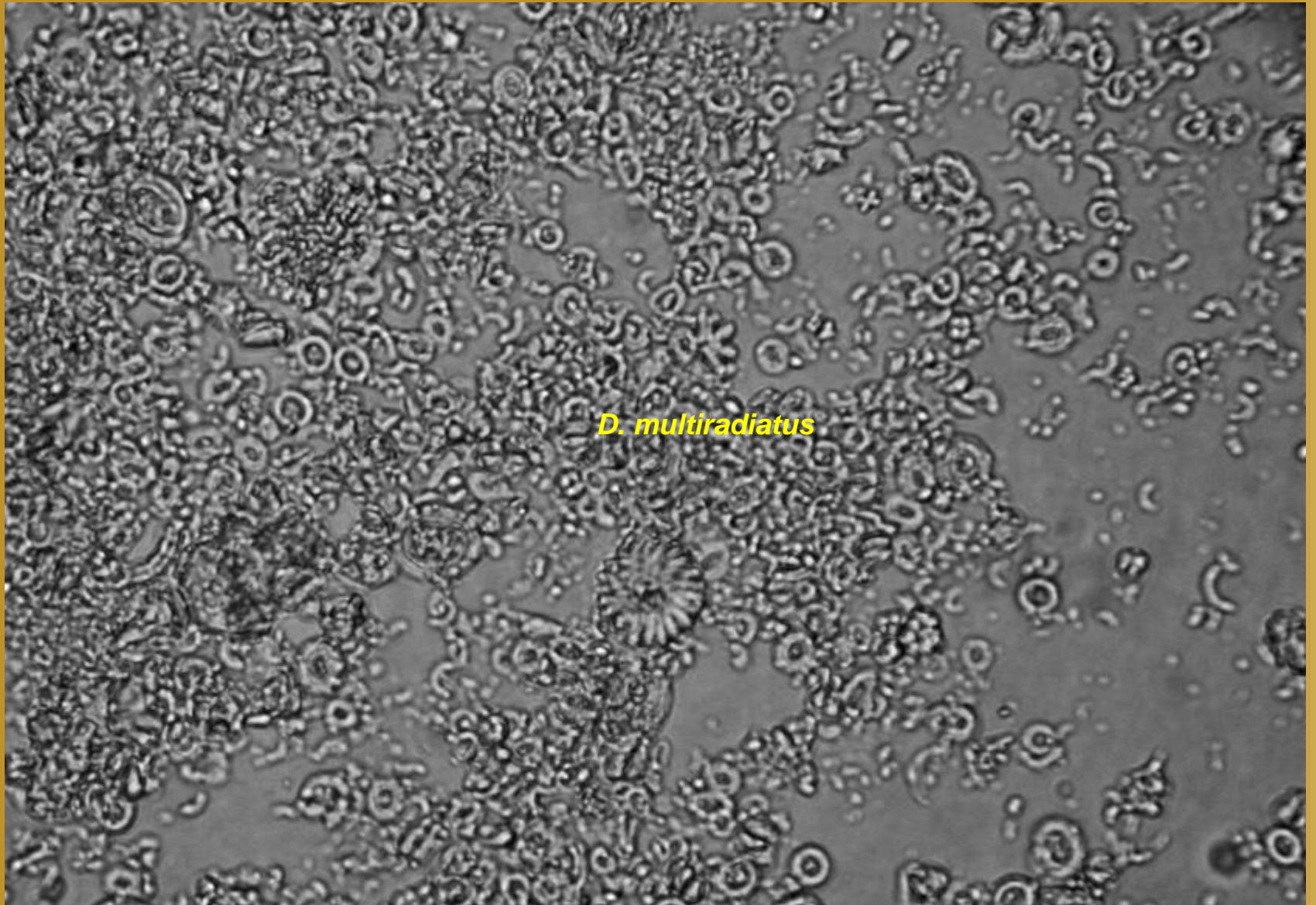
Discoaster





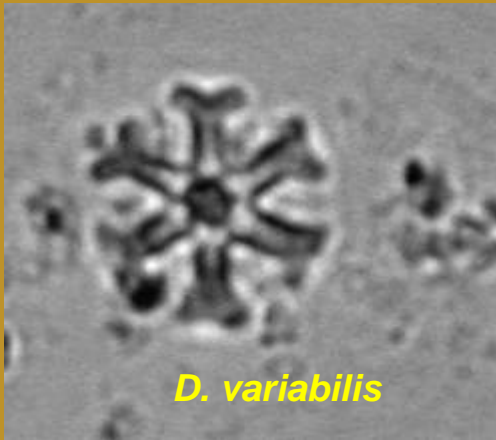


Eocene, Piston Core

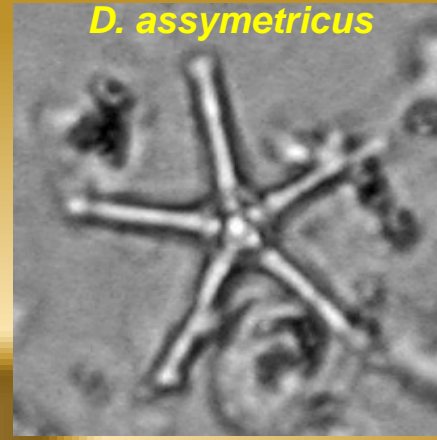
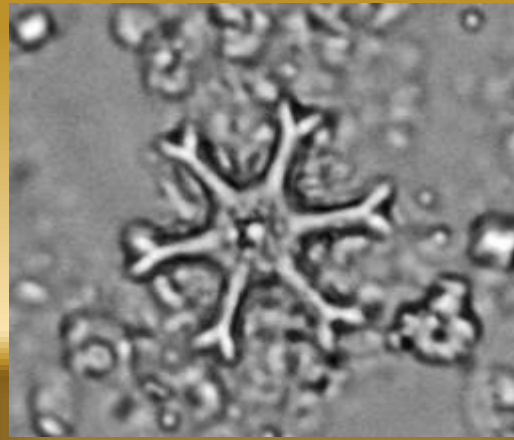


D. multiradiatus

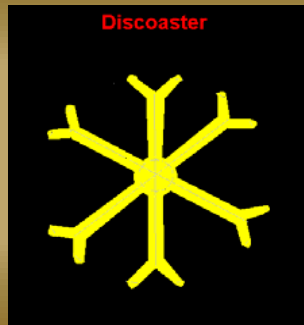
Eocene, Piston Core



D. variabilis



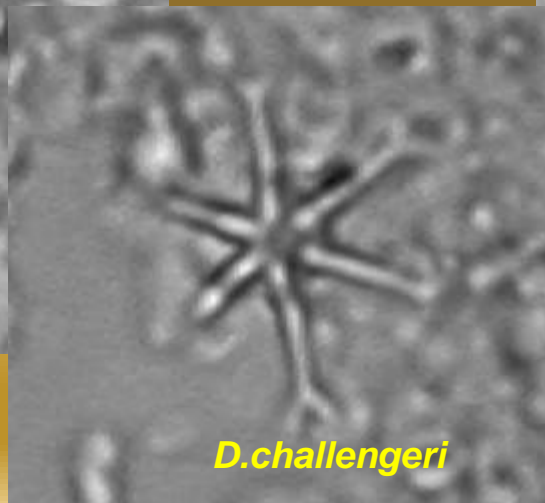
D. asymmetricus



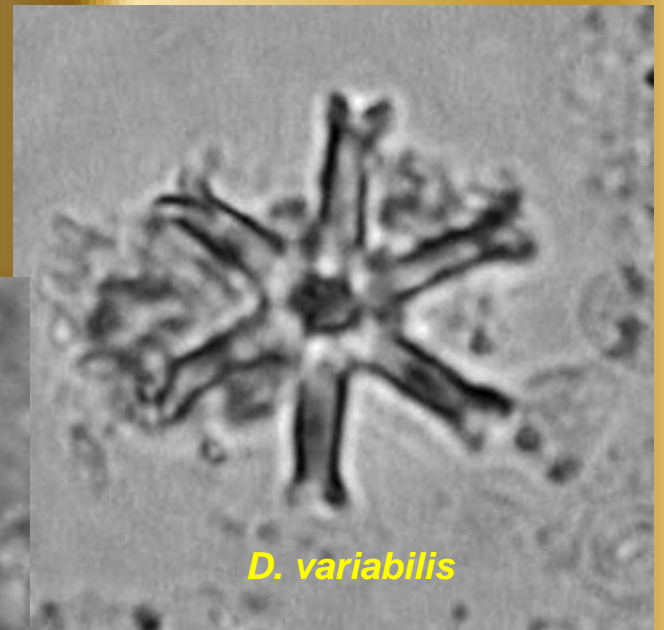
Discoaster



D. challengerii



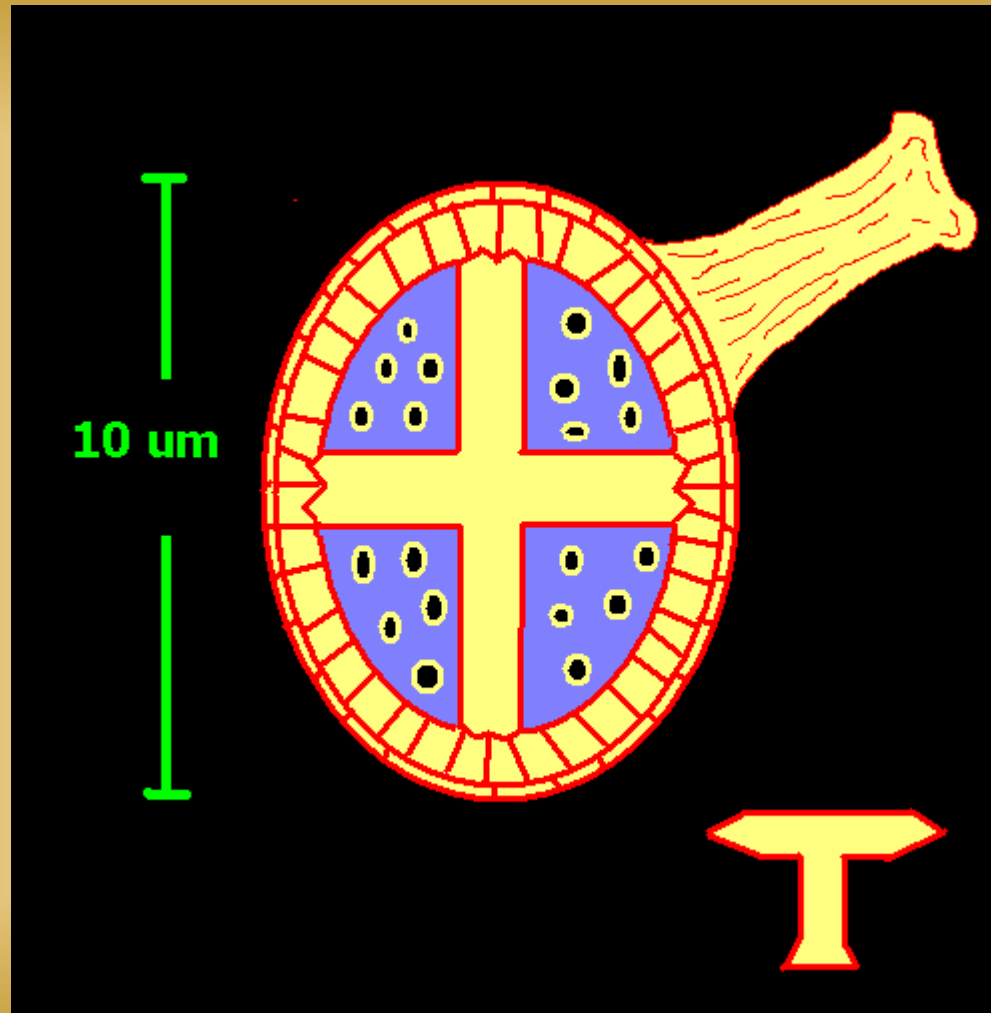
D. challengerii



D. variabilis



Discoaster barbadiensis





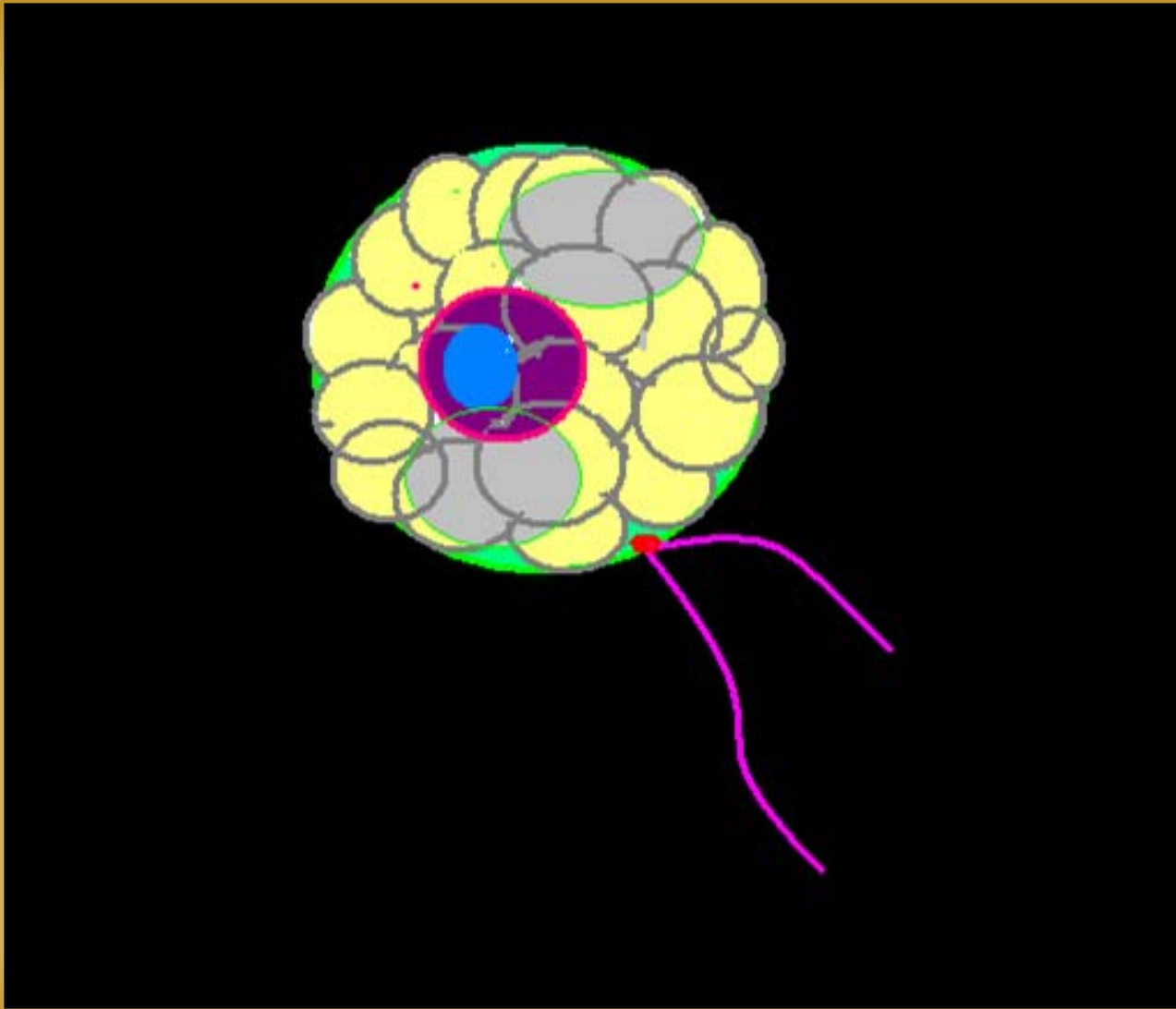
Discoaster



side



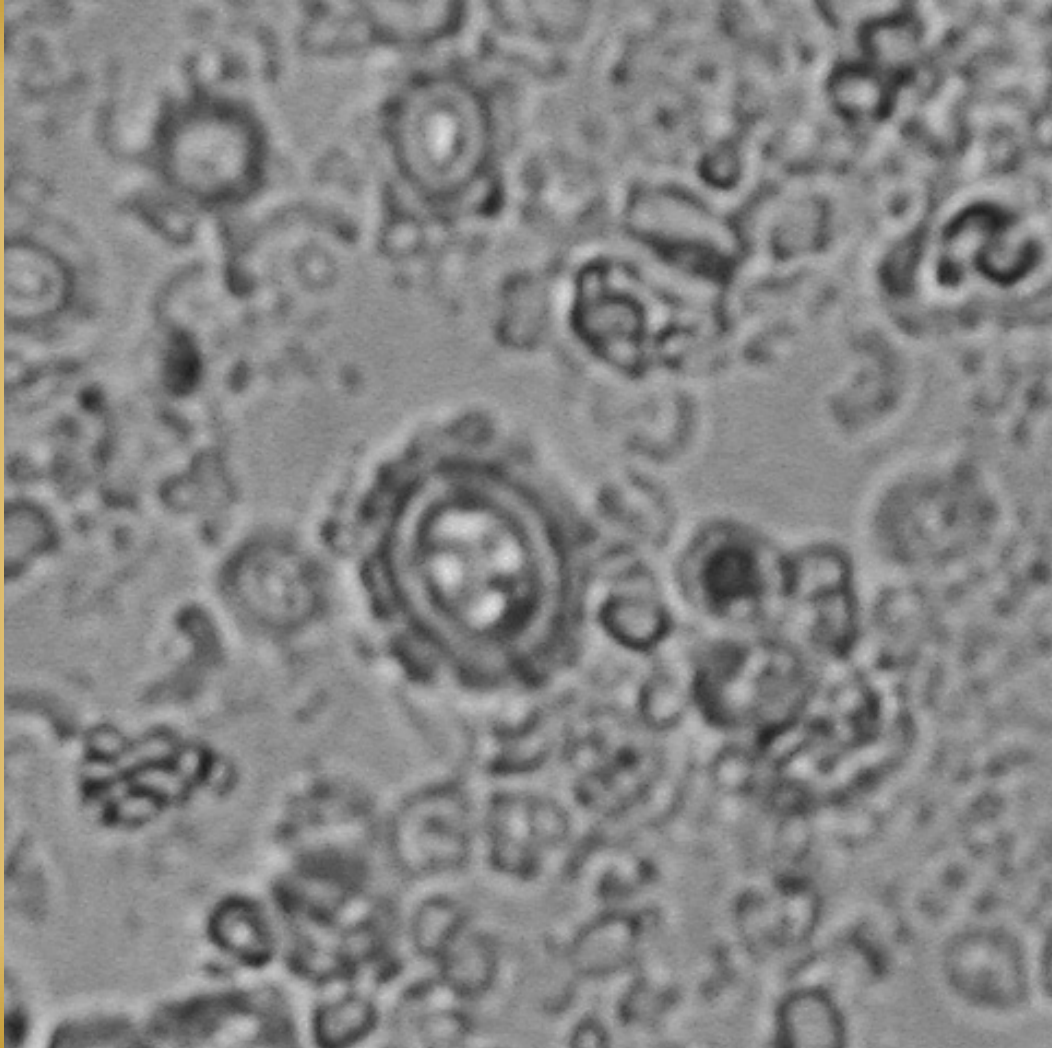
top





British Museum of Natural History

Chiasmolithus sp.



Eocene, Piston Core

*Rhabdosphaera
clavigera*

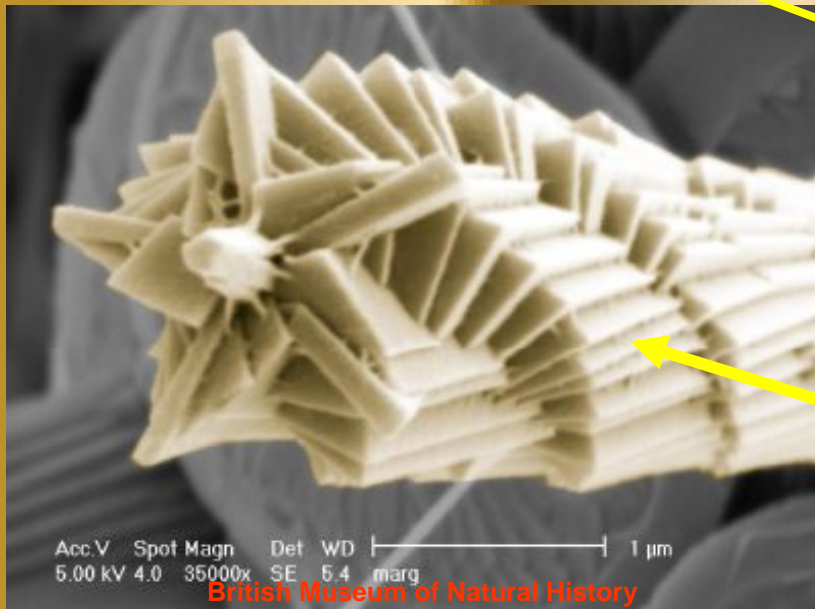
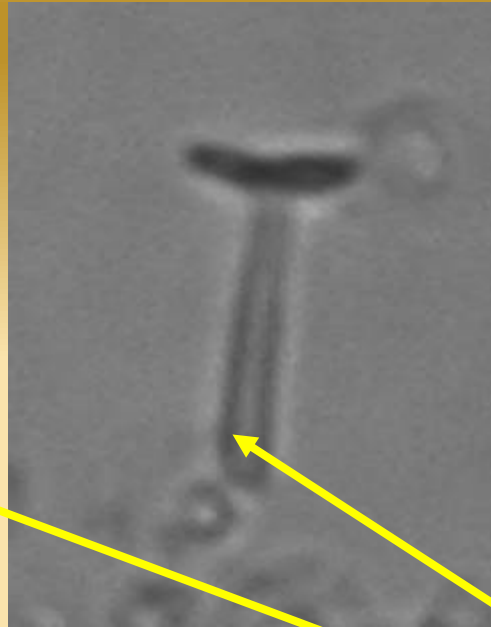
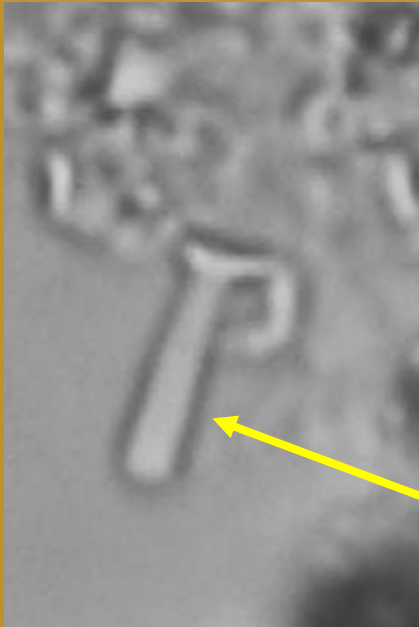
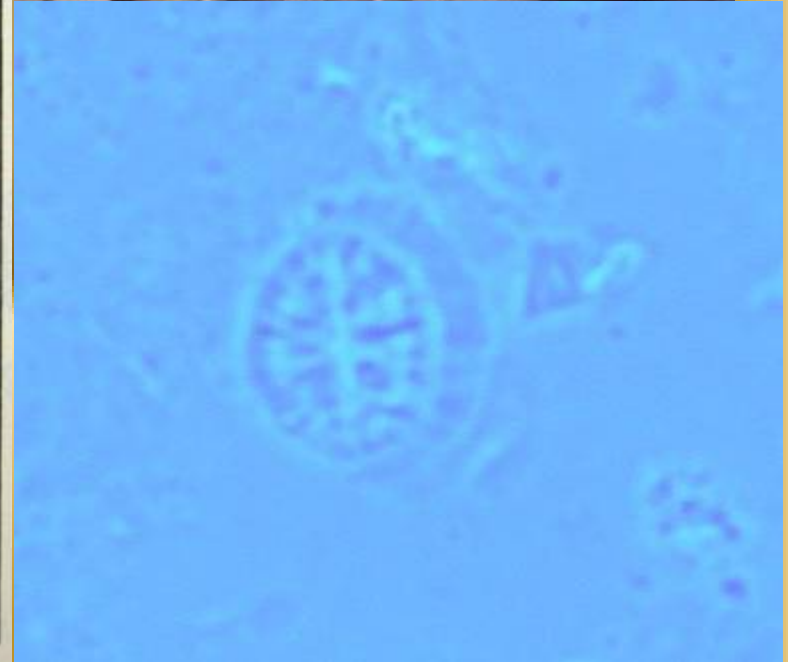
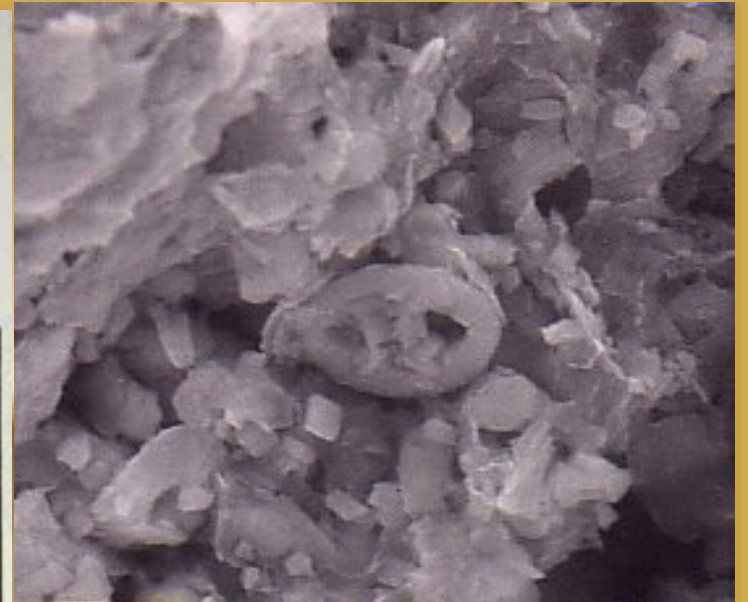
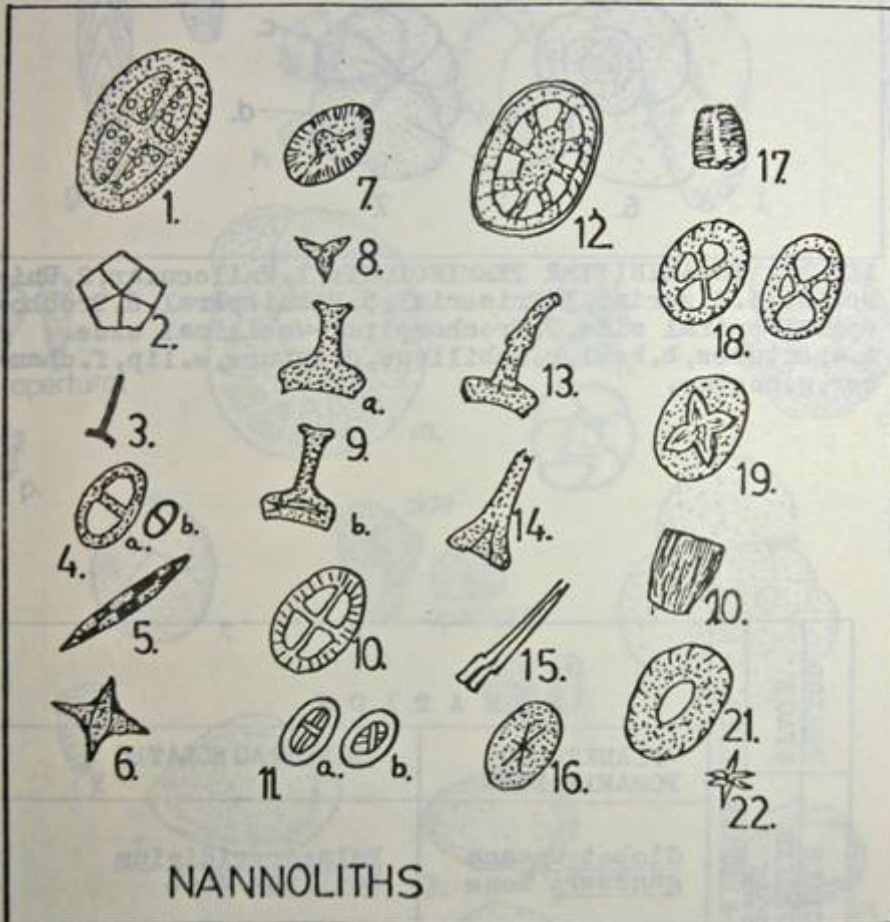


Fig. 4, Navesink Nannofossils.

1. *Broinsonia parca*, 2. *Braarudisphaera bigelowi*,
3. *Rhabdolithina* sp., 4. *Zygodiscus* sp.,
5. *Microrhabdulus* sp., 6. *Micula staurophora*,
7. *Eiffellithus eximius*, 8. *Tetralithus* sp.,
9. *Parhabdolithus* sps., 10. *Vekshinella* sp.,
11. *Chiastozygus* sp., 12. *Cretarhabdus* (*retecapsa*)
13. *Parhabdolithus* sp., 15. *Lithraphidites* sp.,
17. *Nannoconus* sp., 20. *Cornusphaera* sp.,
- 14., 16., 18., 19., 21., 22. Gen. et sp., indet..



Calcareous

Nannoplankton:

**'Coccoliths' : Late
Cretaceous**

